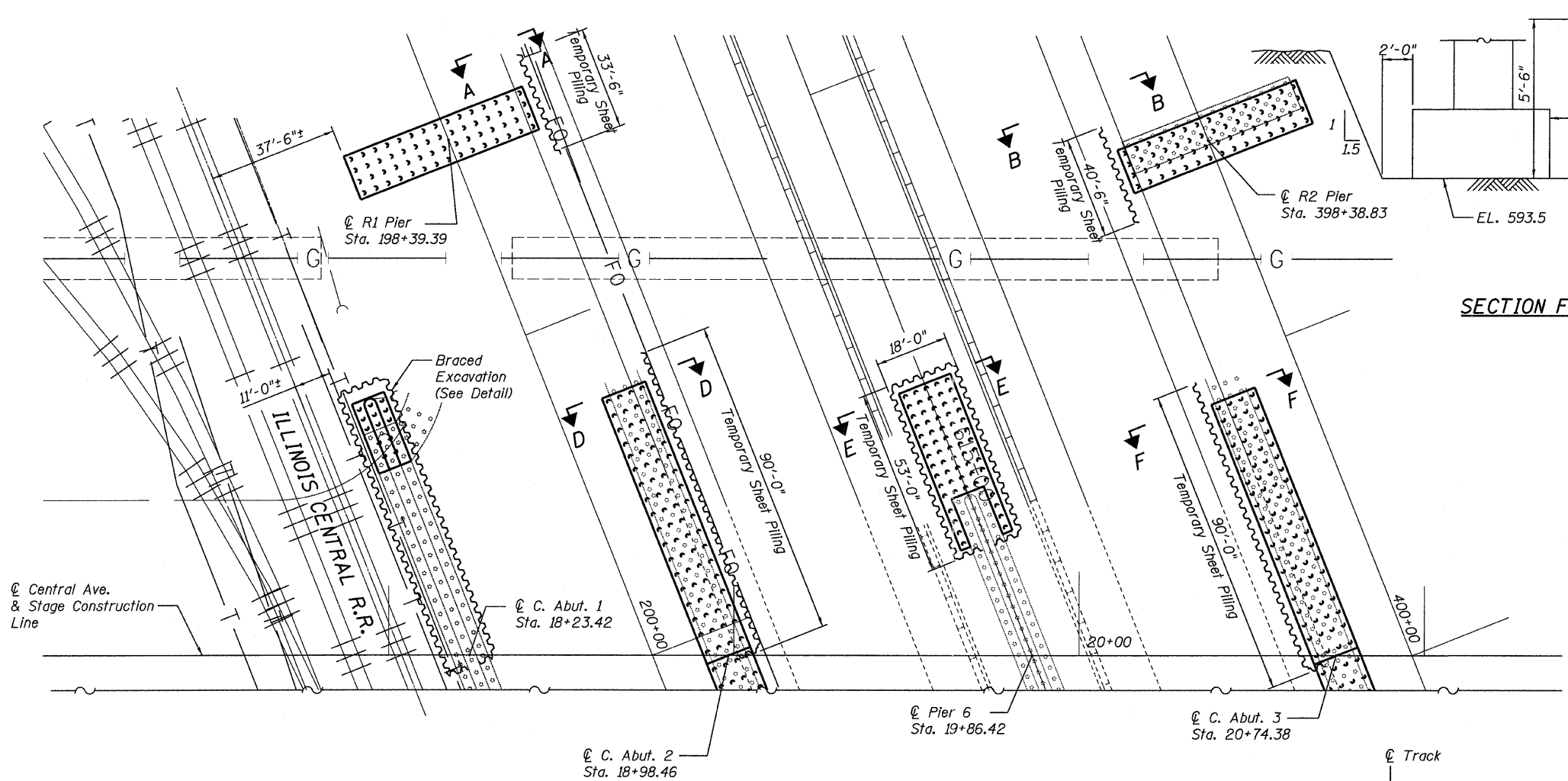
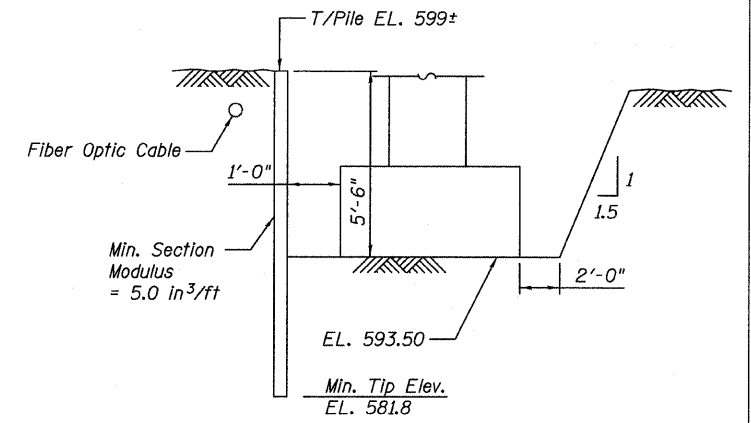


STATE OF ILLINOIS  
DEPARTMENT OF TRANSPORTATION



SECTION F-F

SECTION E-E

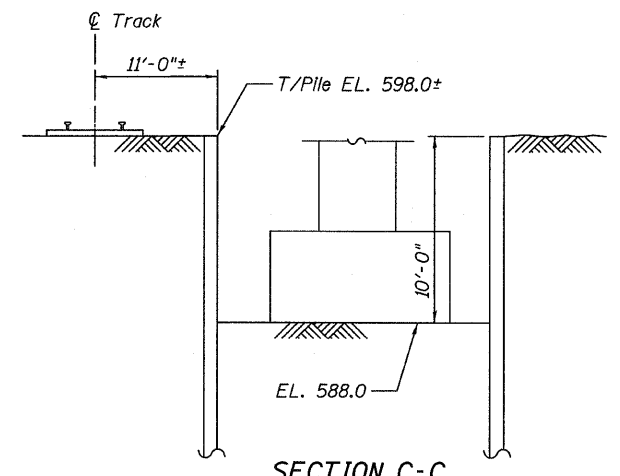


SECTION D-D

NOTES:

1. If the Contractor chooses to alter the temporary cantilevered sheet piling design requirements shown on the plans for lesser design requirements, then full design submittals with the required seals will be expected by the Department for review and approval.
2. The Contractor shall connect the first sheet to the existing crash wall to ensure stability of the sheets driven to the top of the existing footing. The connection shall be reviewed and accepted by the engineer and included in the cost for Braced Excavation.
3. The cost of furnishing and placing backfill material as necessary for pier work shall be included in the cost of Braced Excavation. Backfilling shall be in accordance with Article 502.10 of the Standard Specifications.

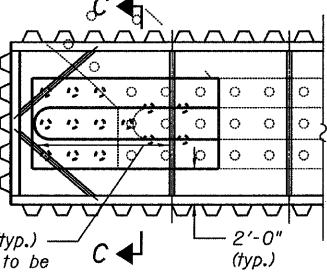
STAGE II  
TEMPORARY SHEET PILING &  
BRACED EXCAVATION  
CENTRAL/I-55  
STRUCTURE NO. 016-0724



SECTION C-C

BILL OF MATERIAL

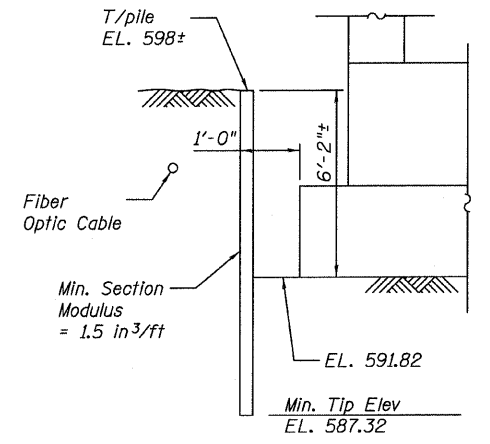
ITEM	UNIT	TOTAL
Temporary Sheet Piling	SQ FT	5,555
Braced Excavation	CU YD	437



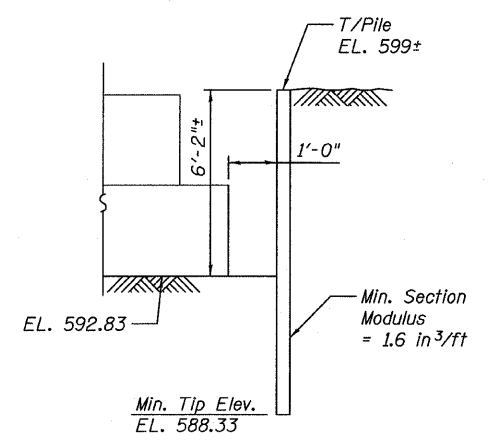
C. ABUT. 1 DETAIL

Bracing members (typ.)  
Layout and design to be  
provided by the Contractor,  
see Special Provisions

SECTION A-A



SECTION B-B



TYLIN INTERNATIONAL

DESIGNED - JMA	REVISIONS	
CHECKED - AMD,	NAME	DATE
DRAWN - JMA		
CHECKED - AMD,		
DATE - 03/25/2011		

SHEET NO. 10	F.A.I. RTE.	SECTION	COUNTY	TOTAL SHEETS	SHEET NO.
	55	0711.2R & 1011.1BR	COOK	741	334
239 SHEETS		CONTRACT NO. 60999			
FED. ROAD DIST. NO. 1 ILLINOIS FED. AID PROJECT					

9/02/05 AM  
c:\01345\structur\02 Central Ave. 016-0724\155c2sheet\linoA.dwg