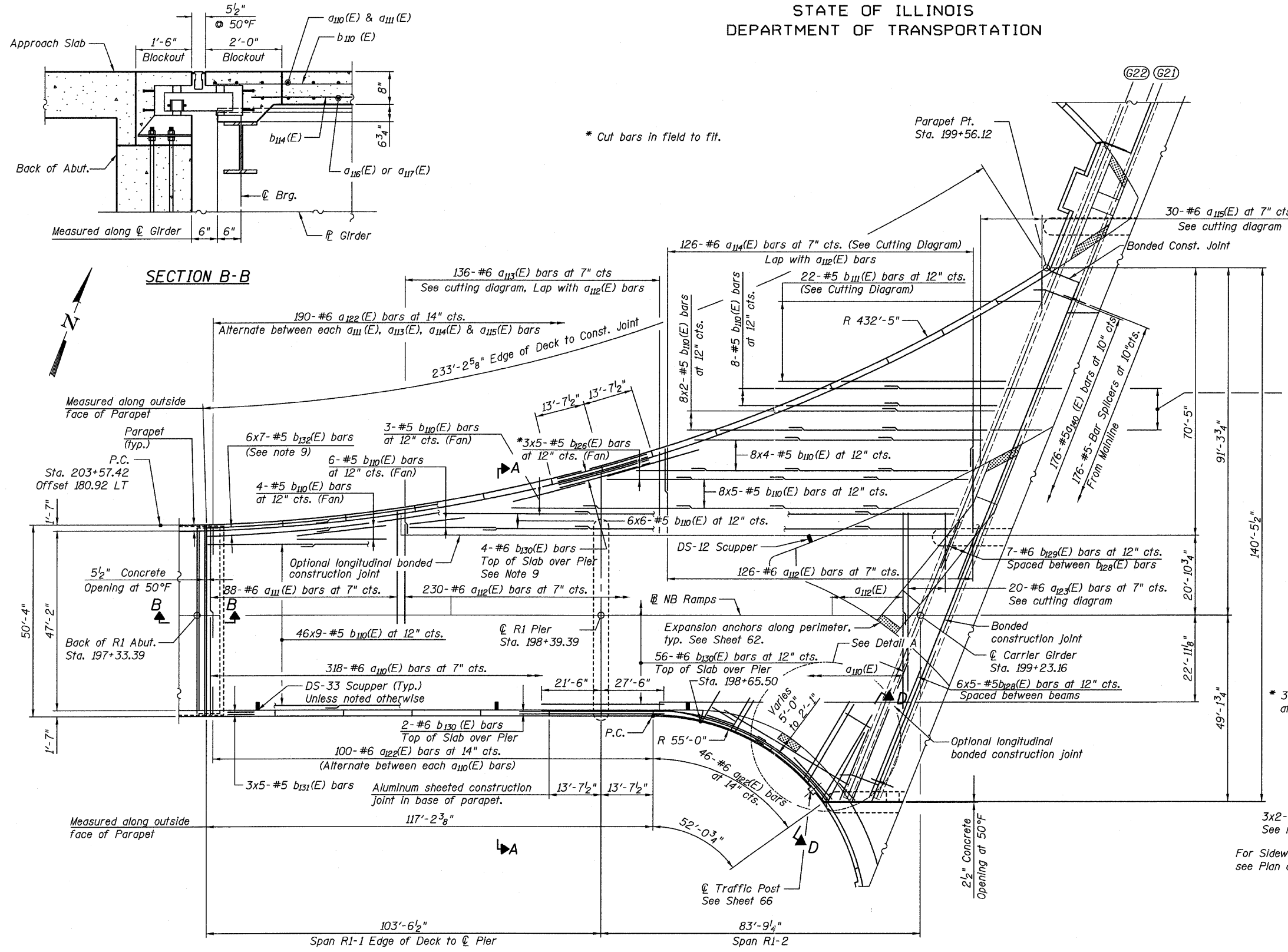


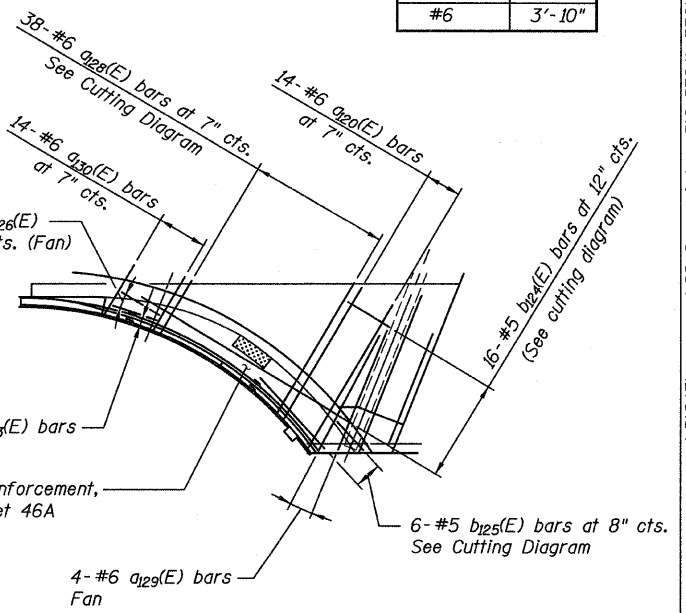
STATE OF ILLINOIS
DEPARTMENT OF TRANSPORTATION



- NOTES:**
1. Bars indicated thus "47x8-#5" etc. indicates 47 lines of bars with 8 lengths per line.
 2. For Section A-A, see Sheet 46.
For Section D-D, see Sheet 46A.
 3. For Parapet Elevations, see Sheet 47.
 4. For Bill of Material and Cutting Diagram, see Sheet 46.
 5. For Drainage Scupper Plans and Sections, see Sheets 84, 88 & 89.
 6. All deck construction joints shall be bonded construction joints.
 7. Cut longitudinal reinforcement to clear scuppers.
 8. Bars shall be sprung in place to be concentrically placed at the spacing noted.

MINIMUM BAR LAPS

Bar Size	Min. Lap
#5	3'-3"
#6	3'-10"



DETAIL A
SUPERSTRUCTURE - TOP
RAMP 1 FLARE
STRUCTURE NO. 016-0724

DECK PLAN

TYLIN INTERNATIONAL	DESIGNED - AMD	REVISIONS		SHEET NO. 45	F.A.I. RTE. 55	SECTION 0711.2R & 1011.1BR	COUNTY COOK	TOTAL SHEETS 741	SHEET NO. 369
	CHECKED - PF	NAME	DATE						
	DRAWN - MU								
	CHECKED - AMD,								
	DATE - 03/25/2011			239 SHEETS	CONTRACT NO. 60999		FED. ROAD DIST. NO. 1 ILLINOIS FED. AID PROJECT		