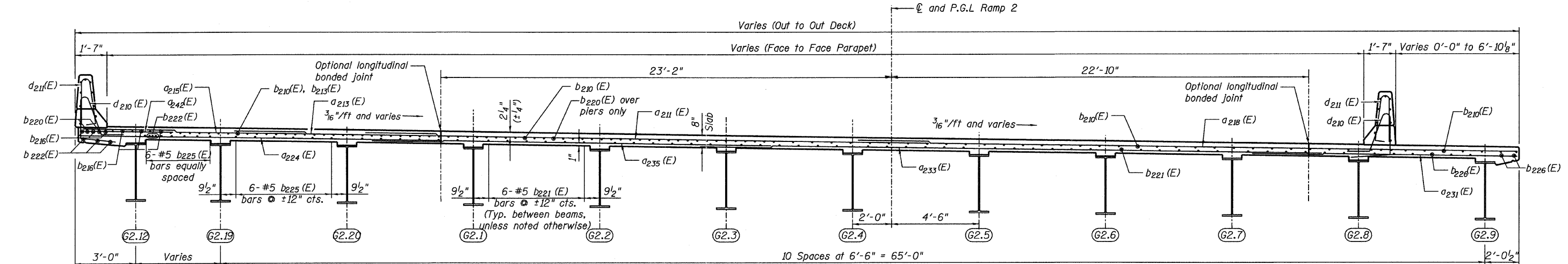
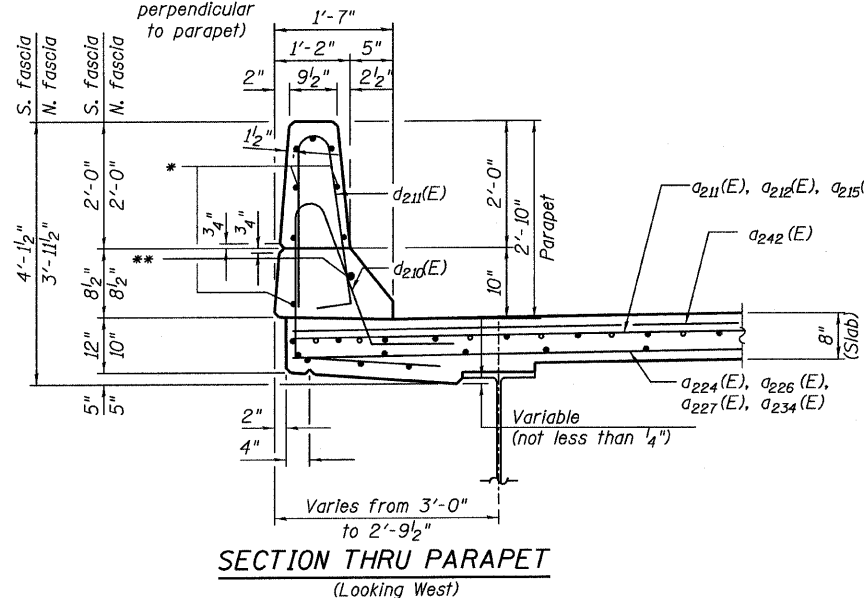


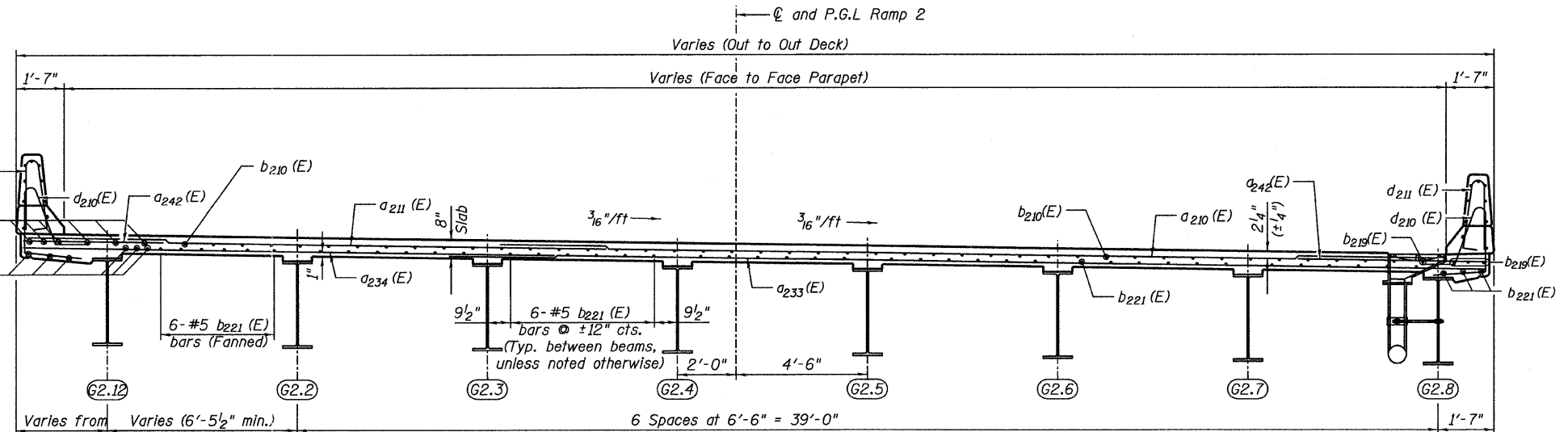
STATE OF ILLINOIS  
DEPARTMENT OF TRANSPORTATION



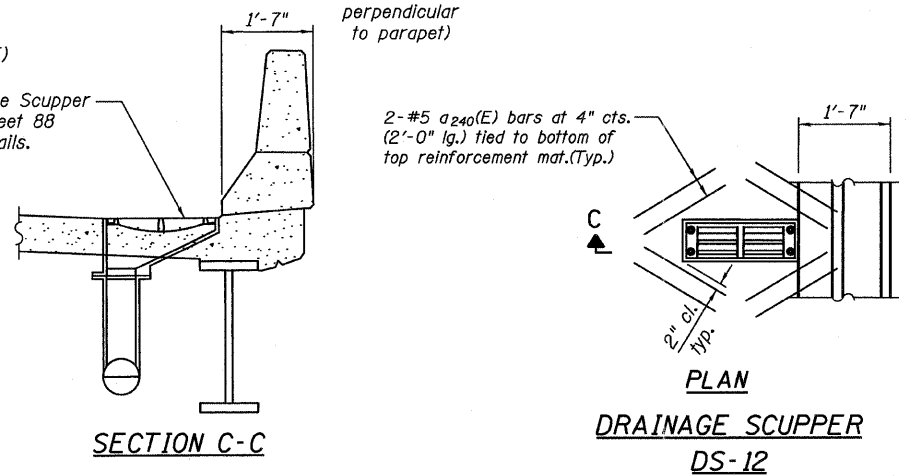
**SECTION A-A**  
(Looking West)



**SECTION THRU PARAPET**  
(Looking West)



**SECTION B-B**  
(Looking West)



**SECTION C-C**

**PLAN**  
**DRAINAGE SCUPPER**  
**DS-12**

- NOTES:**
- For location of Section A-A and B-B, see Sheets 48 and 49.
  - Work this sheet with Sheets 48, 49, 50A & 51.
  - All deck construction joints shall be bonded construction joints.
  - See Sheet 60 for concrete parapet transition details.

**CROSS SECTIONS & DETAILS**  
**RAMP 2 FLARE**  
**SHEET 1 OF 2**  
**STRUCTURE NO. 016-0724**

<b>TYLIN INTERNATIONAL</b>	DESIGNED - AMD	REVISIONS		SHEET NO. 50	F.A.I RTE. 55	SECTION 0711.2R & 1011.1BR	COUNTY COOK	TOTAL SHEETS 741	SHEET NO. 374
	CHECKED - PDF	NAME	DATE						
	DRAWN - PK								
	CHECKED - AMD,								
	DATE - 03/25/2011								
					239 SHEETS				
					CONTRACT NO. 60999				
					FED. ROAD DIST. NO. 1 ILLINOIS FED. AID PROJECT				

pi:01345\structure\2 Central Ave. 016-0724\155F2decksec.dan 5/10/2011 8:41:22 AM