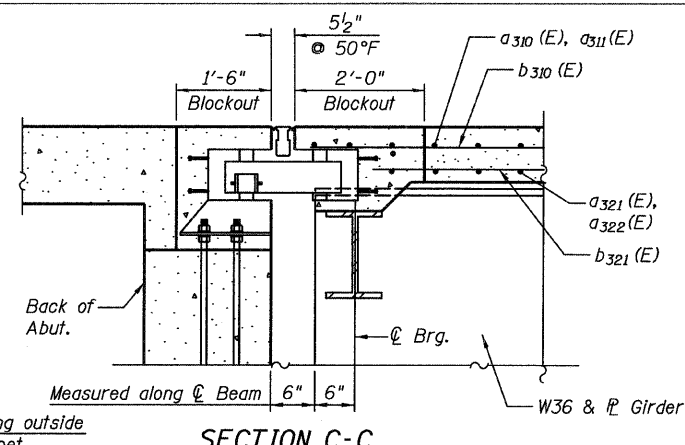
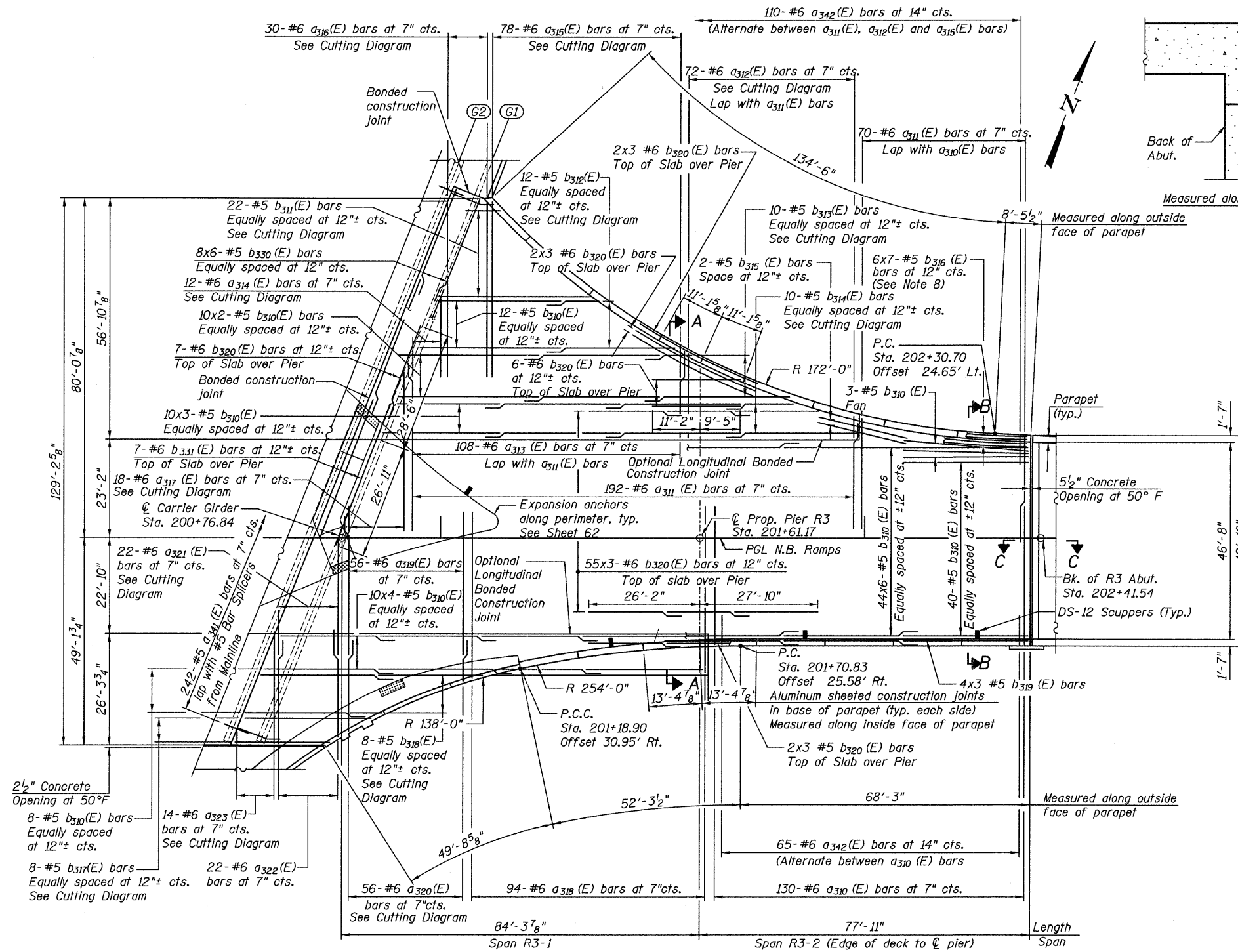


STATE OF ILLINOIS
DEPARTMENT OF TRANSPORTATION



SECTION C-C

MINIMUM BAR LAPS

Bar Size	Min. Lap
#5	3'-3"
#6	3'-10"

NOTES:

1. Bars indicated thus "47x7-#5" etc. indicates 47 lines of bars with 7 lengths per line.
2. For Section A-A, see Sheet 54.
3. For Parapet Elevations, see Sheet 55.
4. For Bill of Material, see Sheet 54A.
5. For Drainage Scupper System Plans and Sections, see Sheets 86, 88 & 89.
6. All construction joints shall be bonded construction joints.
7. Cut longitudinal reinforcement to clear scuppers.
8. Bars shall be placed radially at the spacing noted. Bends bars in field to fit.
9. For sidewalk reinforcement see Sheet 54A.

DECK PLAN

SUPERSTRUCTURE - TOP
RAMP 3 FLARE
STRUCTURE NO. 016-0724

TYLIN INTERNATIONAL	DESIGNED - AMD	REVISIONS		SHEET NO. 53	F.A.I. RTE.	SECTION	COUNTY	TOTAL SHEETS	SHEET NO.	
	CHECKED - PDF	NAME	DATE		55	0711.2R & 1011.1BR	COOK	741	377	
	DRAWN - PK				239 SHEETS	CONTRACT NO. 60999				
	CHECKED - AMD,				FED. ROAD DIST. NO. 1 ILLINOIS FED. AID PROJECT					
	DATE - 03/25/2011									

8:41:28 AM
p:\01345\structure\016-0724\55f3decktop.dgn
5/10/2011