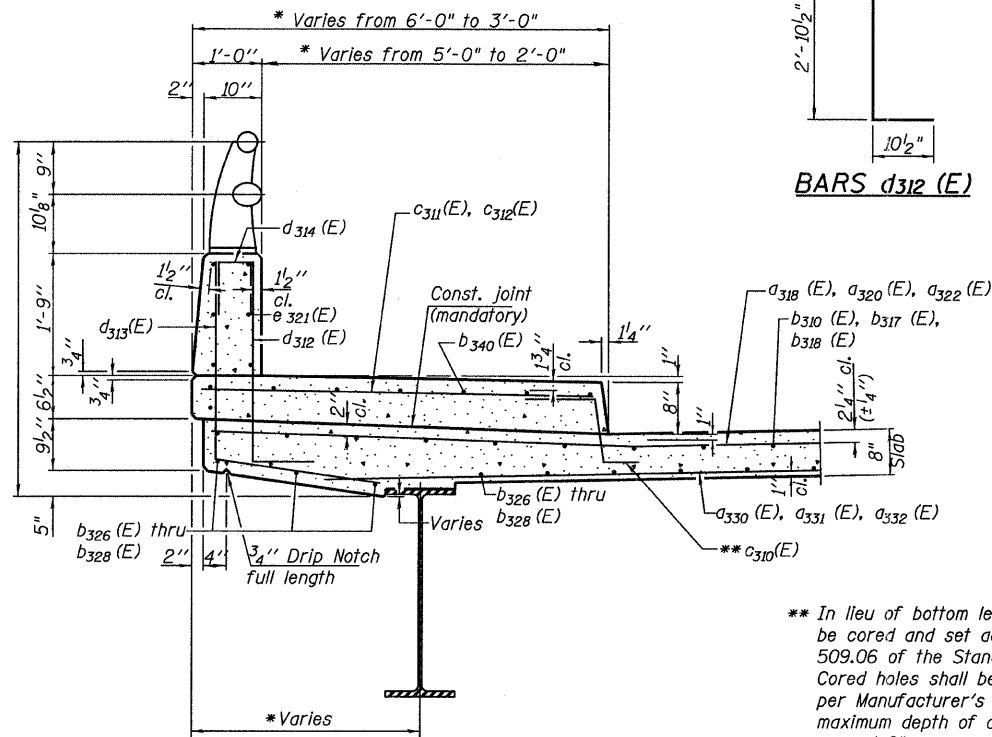


BILL OF MATERIAL

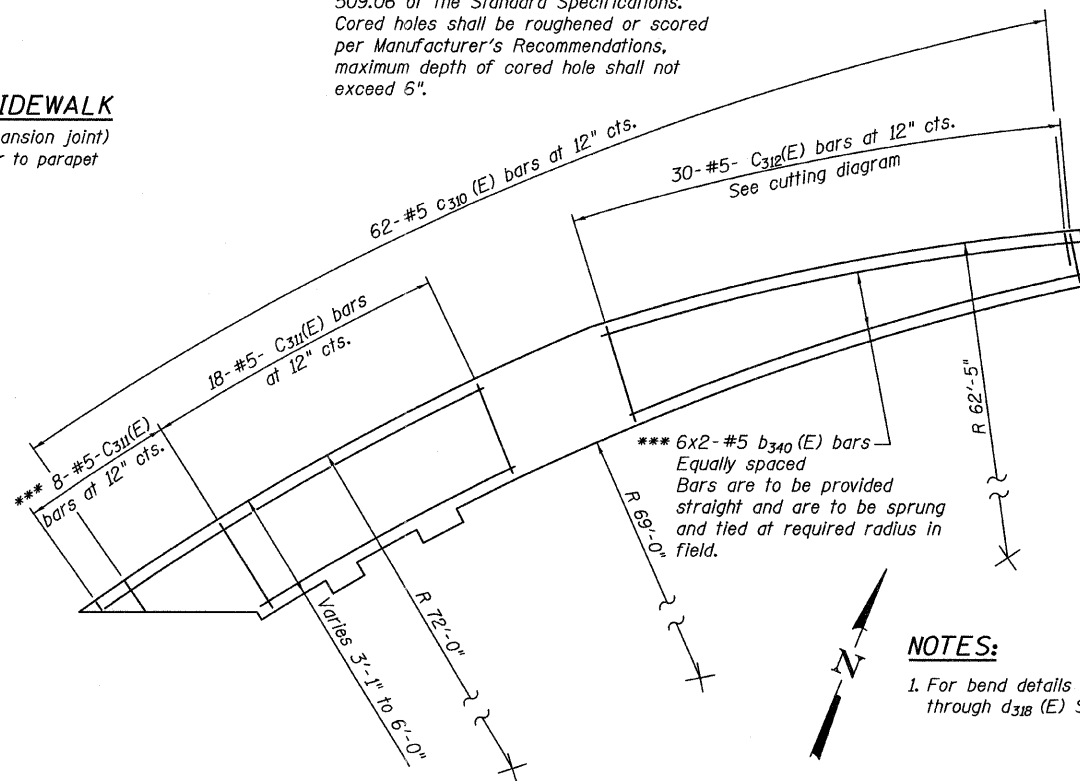
Bar	No.	Size	Length (ft)	Shape
a 310 (E)	130	#6	32'-7"	
a 311 (E)	262	#6	25'-9"	
a 312 (E)	36	#6	24'-0"	
a 313 (E)	108	#6	20'-0"	
a 314 (E)	6	#6	26'-0"	
a 315 (E)	78	#6	53'-0"	
a 316 (E)	15	#6	54'-0"	
a 317 (E)	9	#6	30'-9"	
a 318 (E)	94	#6	39'-7"	
a 319 (E)	56	#6	36'-4"	
a 320 (E)	56	#6	30'-6"	
a 321 (E)	11	#6	41'-10"	
a 322 (E)	22	#6	25'-0"	
a 323 (E)	7	#6	30'-0"	
a 324 (E)	34	#6	27'-4"	
a 325 (E)	68	#6	25'-6"	
a 326 (E)	24	#6	42'-0"	
a 327 (E)	10	#6	40'-0"	
a 328 (E)	6	#6	32'-0"	
a 329 (E)	9	#6	47'-0"	
a 330 (E)	28	#6	39'-0"	
a 331 (E)	70	#6	11'-2"	
a 332 (E)	8	#6	38'-0"	
a 333 (E)	212	#6	35'-8"	
a 334 (E)	27	#6	39'-8"	
a 335 (E)	158	#6	22'-6"	
a 340 (E)	32	#5	2'-0"	
a 341 (E)	412	#5	10'-4"	
a 342 (E)	175	#6	6'-6"	
b 310 (E)	417	#5	27'-4"	
b 311 (E)	11	#5	42'-0"	
b 312 (E)	6	#5	50'-0"	
b 313 (E)	5	#5	53'-0"	
b 314 (E)	5	#5	60'-0"	
b 315 (E)	2	#5	20'-0"	
b 316 (E)	42	#5	23'-11"	
b 317 (E)	4	#5	42'-0"	
b 318 (E)	4	#5	28'-0"	
b 319 (E)	12	#5	28'-7"	
b 320 (E)	196	#5	20'-7"	
b 321 (E)	370	#5	31'-4"	
b 322 (E)	36	#5	27'-8"	
b 323 (E)	9	#5	39'-0"	
b 324 (E)	9	#5	45'-0"	
b 325 (E)	6	#5	57'-0"	
b 326 (E)	18	#5	35'-0"	
b 327 (E)	2	#5	27'-0"	
b 328 (E)	6	#5	47'-0"	
b 329 (E)	4	#5	15'-0"	
b 330 (E)	48	#5	26'-5"	
b 331 (E)	7	#6	38'-8"	
b 340 (E)	12	#5	27'-8"	
c 310 (E)	62	#5	2'-4"	
c 311 (E)	26	#5	5'-6"	
c 312 (E)	15	#5	8'-0"	
d 310 (E)	291	#5	6'-5"	
d 311 (E)	291	#5	5'-7"	
d 312 (E)	56	#6	3'-9"	
d 313 (E)	56	#4	4'-10"	
d 314 (E)	12	#4	2'-0"	
d 315 (E)	3	#6	7'-0"	
d 316 (E)	3	#6	4'-9"	
d 317 (E)	3	#6	7'-9"	
d 318 (E)	3	#6	3'-0"	
e 310 (E)	2	#4	33'-1"	
e 311 (E)	2	#8	34'-8"	
e 312 (E)	28	#4	15'-9"	
e 313 (E)	16	#4	13'-1"	
e 314 (E)	2	#8	13'-1"	
e 318 (E)	1	#8	15'-2"	
e 319 (E)	8	#4	15'-2"	
e 320 (E)	16	#4	13'-9"	
e 321 (E)	18	#5	15'-7"	
e 322 (E)	2	#8	22'-1"	
e 323 (E)	2	#4	20'-6"	
e 324 (E)	14	#4	19'-4"	
e 325 (E)	16	#4	10'-10"	
e 326 (E)	2	#8	10'-10"	
e 329 (E)	3	#8	26'-7"	
e 330 (E)	3	#4	24'-6"	
e 331 (E)	28	#4	17'-0"	
e 332 (E)	2	#8	13'-10"	
Reinforcement Bars, Epoxy Coated	LB	120,840		
Concrete Superstructure	CU YD	401.9		
Bridge Deck Grooving	SQ YD	1,212		
Protective Coat	SQ YD	1,536		

STATE OF ILLINOIS
DEPARTMENT OF TRANSPORTATION



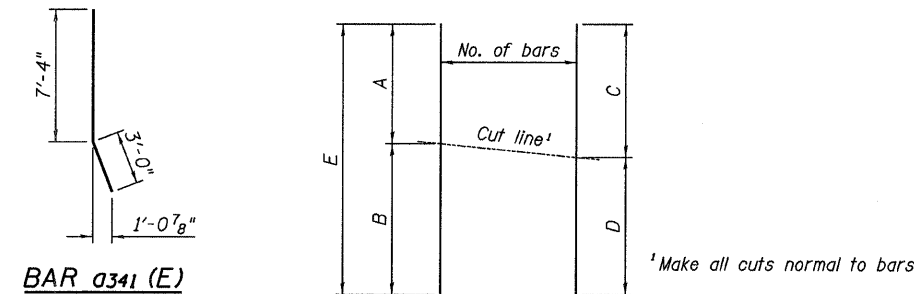
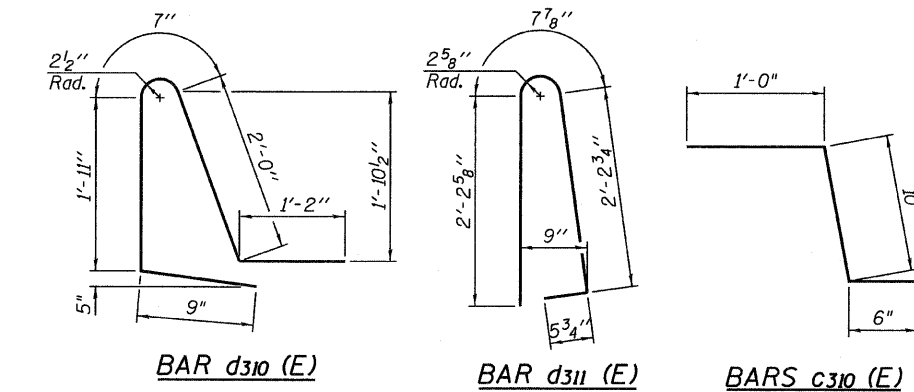
SECTION THRU SIDEWALK
(Looking West, near expansion joint)
* Measurement perpendicular to parapet

** In lieu of bottom leg c₃₁₀(E) bars may be cored and set according to article 509.06 of the Standard Specifications. Cored holes shall be roughened or scored per Manufacturer's Recommendations, maximum depth of cored hole shall not exceed 6".



PLAN SOUTH SIDEWALK

*** Cut bars to fit in field



BAR	A	B	C	D	E	No. bars
d 312 (E)	4'-0"	20'-0"	11'-11"	12'-1"	24'-0"	36
d 314 (E)	6'-0"	20'-0"	12'-4"	13'-8"	26'-0"	6
d 315 (E)	9'-0"	44'-0"	26'-3"	26'-9"	53'-0"	39
d 316 (E)	10'-0"	44'-0"	26'-5"	27'-7"	54'-0"	15
d 317 (E)	6'-6"	24'-3"	14'-11"	15'-10"	30'-9"	9
d 320 (E)	8'-6"	22'-0"	15'-2"	15'-4"	30'-6"	28
d 321 (E)	10'-4"	31'-6"	20'-5"	21'-5"	41'-10"	11
d 323 (E)	6'-0"	24'-0"	14'-4"	15'-8"	30'-0"	7
d 324 (E)	3'-10"	23'-6"	13'-6"	13'-10"	27'-4"	34
d 326 (E)	6'-0"	36'-0"	20'-8"	21'-4"	42'-0"	24
d 327 (E)	8'-0"	32'-0"	19'-5"	20'-7"	40'-0"	10
d 328 (E)	7'-0"	25'-0"	15'-3"	16'-9"	32'-0"	6
d 329 (E)	9'-0"	38'-0"	22'-8"	24'-4"	47'-0"	9
d 330 (E)	12'-0"	27'-0"	19'-10"	20'-2"	39'-0"	28
d 332 (E)	9'-0"	29'-0"	18'-4"	19'-8"	38'-0"	8
d 334 (E)	17'-4"	22'-4"	19'-9"	19'-11"	39'-8"	27
b 311 (E)	7'-0"	35'-0"	20'-4"	21'-8"	42'-0"	11
b 312 (E)	14'-0"	36'-0"	24'-0"	26'-0"	50'-0"	6
b 313 (E)	15'-0"	38'-0"	25'-3"	27'-9"	53'-0"	5
b 314 (E)	18'-0"	42'-0"	28'-8"	31'-4"	60'-0"	5
b 317 (E)	16'-0"	26'-0"	20'-3"	21'-9"	42'-0"	4
b 318 (E)	8'-0"	20'-0"	13'-2"	14'-10"	28'-0"	4
b 323 (E)	7'-0"	32'-0"	18'-10"	20'-2"	39'-0"	9
b 324 (E)	7'-0"	38'-0"	21'-8"	23'-4"	45'-0"	9
b 325 (E)	15'-0"	42'-0"	26'-9"	30'-3"	57'-0"	6
b 327 (E)	9'-0"	18'-0"	12'-0"	15'-0"	27'-0"	2
b 328 (E)	15'-0"	32'-0"	22'-5"	24'-7"	47'-0"	6
c 312 (E)	2'-6"	5'-6"	4'-0"	4'-0"	8'-0"	15

BAR CUTTING DIAGRAM

NOTES:

1. For bend details for bars d₃₁₅(E) through d₃₁₈(E) See Sheet 61.

**CROSS SECTION & DETAILS
RAMP 3 FLARE
SHEET 2 OF 2
STRUCTURE NO. 016-0724**

TYLIN INTERNATIONAL

DESIGNED - AMD	REVISIONS	
CHECKED - PDF	NAME	DATE
DRAWN - PK		
CHECKED - AMD,		
DATE - 03/25/2011		

SHEET NO. 54A	F.A.I. RTE. 55	SECTION 0711.2R & 1011.1BR	COUNTY COOK	TOTAL SHEETS 741	SHEET NO. 378A
239 SHEETS	CONTRACT NO. 60999		FED. ROAD DIST. NO. 1 ILLINOIS FED. AID PROJECT		