

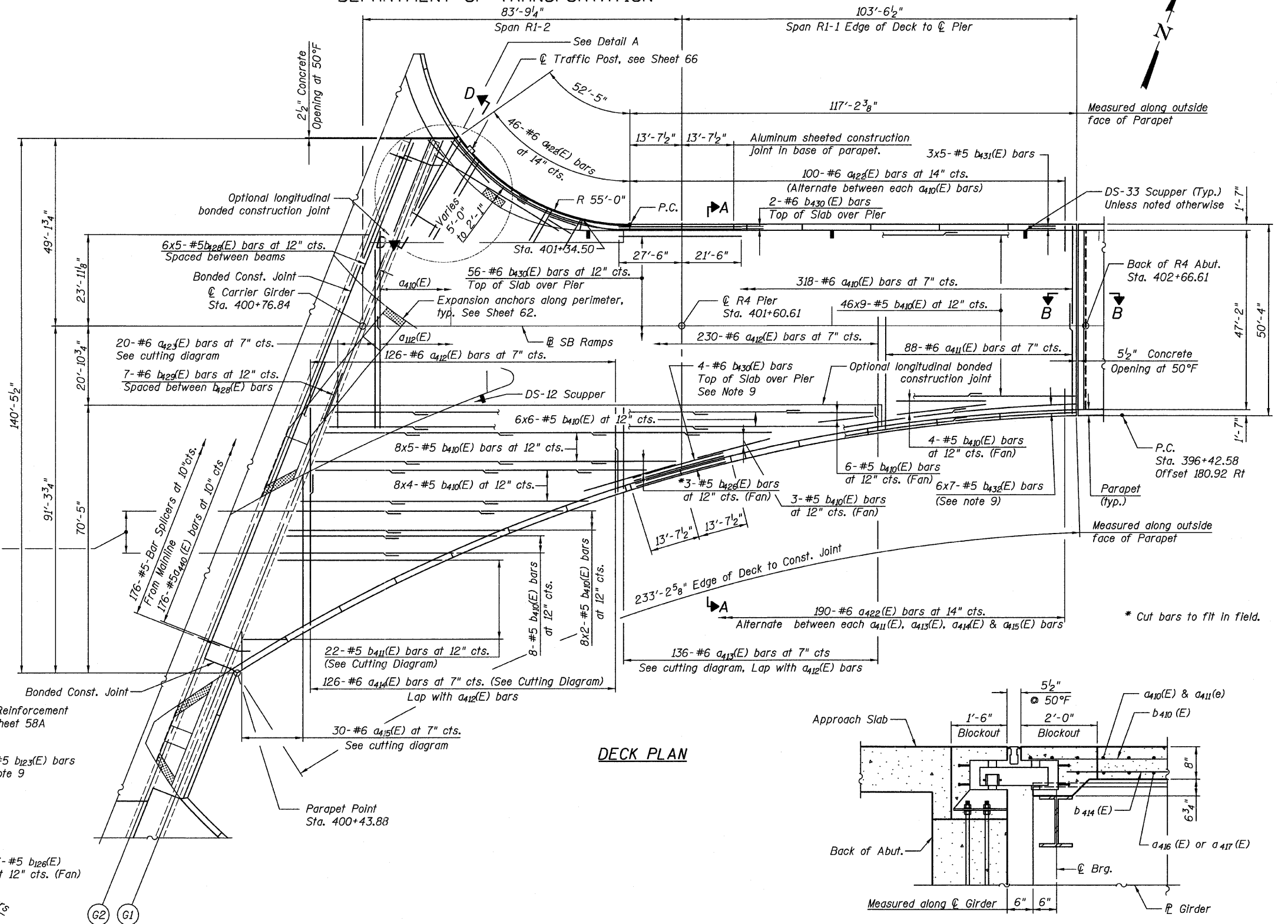
STATE OF ILLINOIS
DEPARTMENT OF TRANSPORTATION

NOTES:

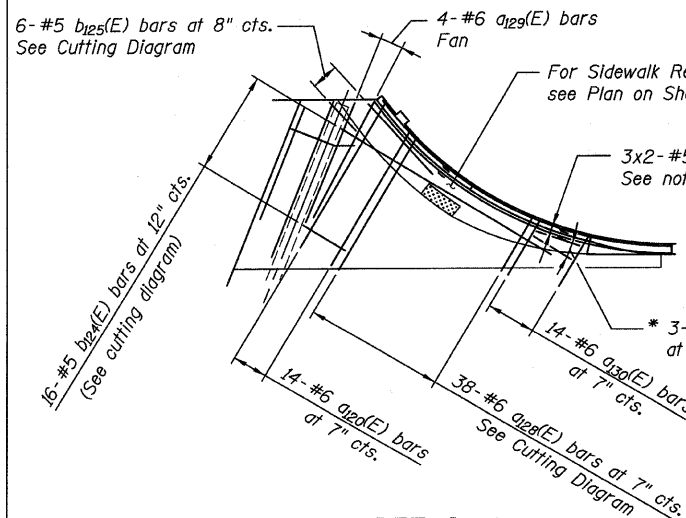
1. Bars indicated thus "47x8-#5" etc. indicates 47 lines of bars with 8 lengths per line.
2. For Section A-A, see Sheet 58.
For Section D-D, see Sheet 58A.
3. For Parapet Elevations, see Sheet 59.
4. For Bill of Material and Cutting Diagram, see Sheet 58A.
5. For Drainage Scupper Plans and Sections, see Sheet 87 thru 89.
6. All construction joints shall be bonded construction joints.
7. Cut longitudinal reinforcement to clear scuppers.
8. Bars shall be sprung in place to be concentrically placed at the spacing noted.

MINIMUM BAR LAPS

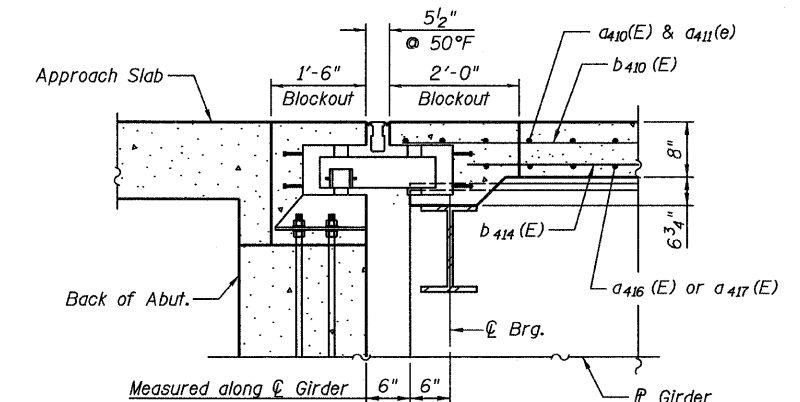
Bar Size	Min. Lap
#5	3'-3"
#6	3'-10"



Working from North to South:
8-#5 b₄₁₂(E) bars at 12" cts. (See Cutting Diagram)
8-#5 b₄₁₃(E) bars at 12" cts. (See Cutting Diagram)



DETAIL A



SECTION B-B
SUPERSTRUCTURE - TOP
RAMP 4 FLARE
STRUCTURE NO. 016-0724

TYLIN INTERNATIONAL	DESIGNED - AMD	REVISIONS		SHEET NO. 57	F.A.I. RTE. 55	SECTION 0711.2R & 1011.1BR	COUNTY COOK	TOTAL SHEETS	SHEET NO.
	CHECKED - PF	NAME	DATE					741	381
	DRAWN - MU							CONTRACT NO. 60999	
	CHECKED - AMD,							FED. ROAD DIST. NO. 1 ILLINOIS FED. AID PROJECT	
	DATE - 03/25/2011			239 SHEETS					

pi:01345\structure\02_Central_Ave_016-0724_1557_4deck_top.dgn 5/9/2011 1:45:31 PM