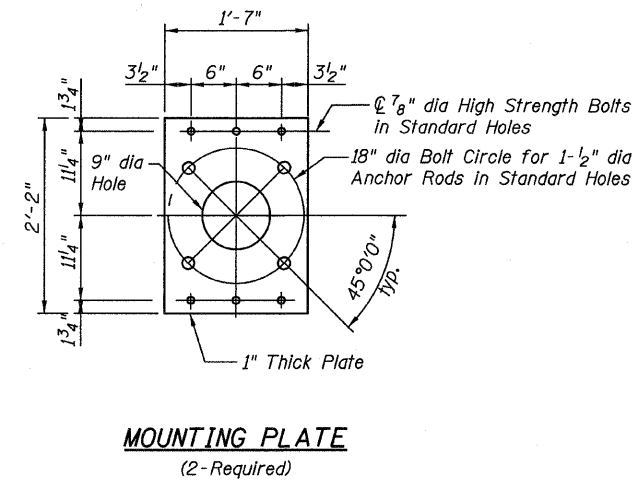
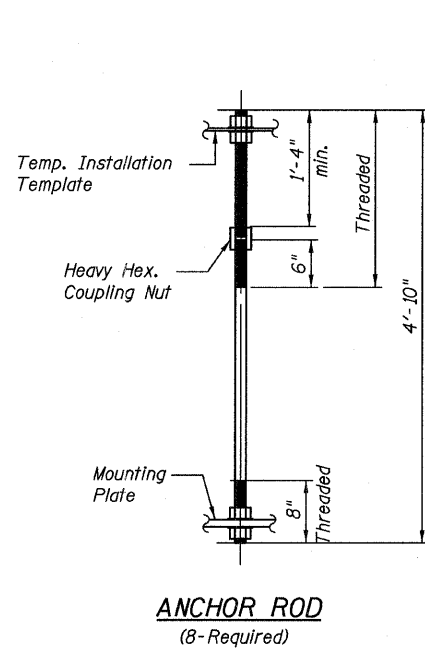
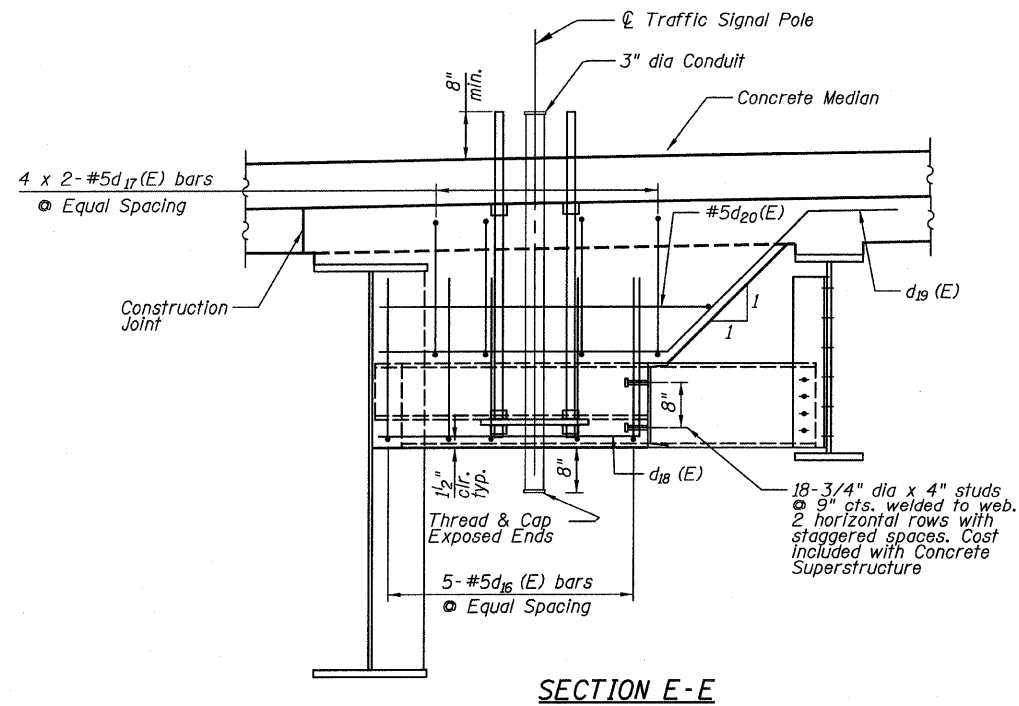
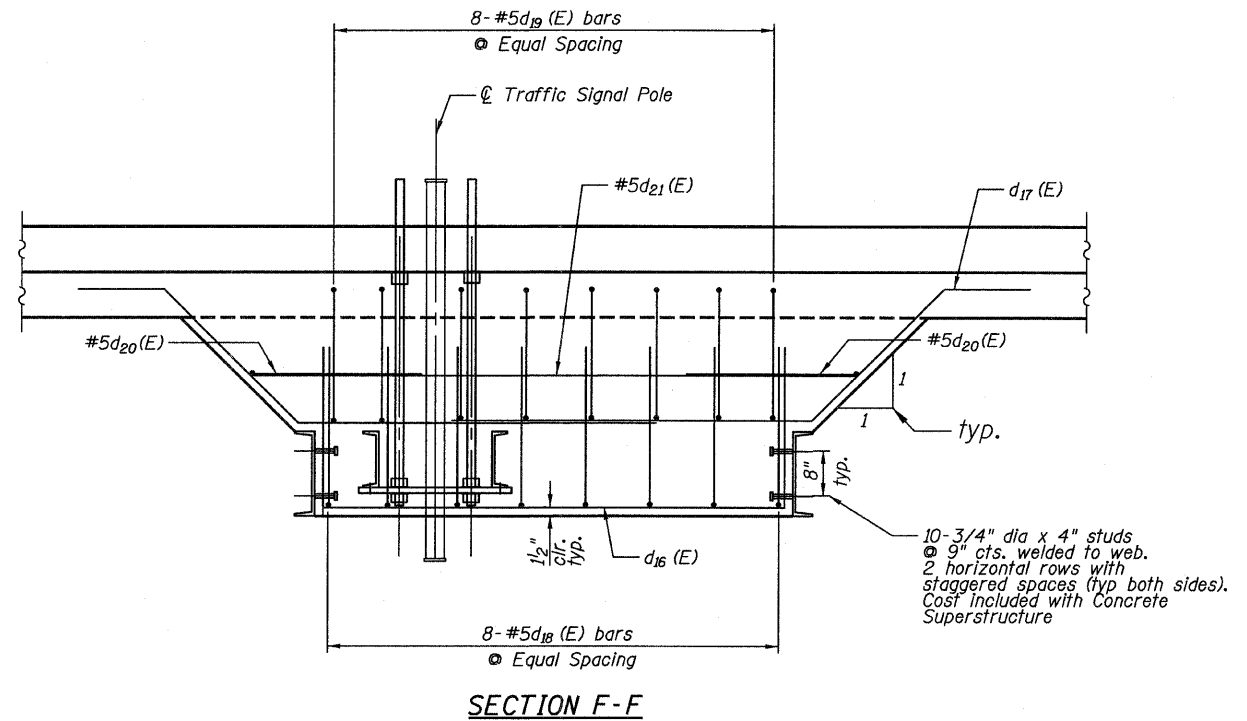
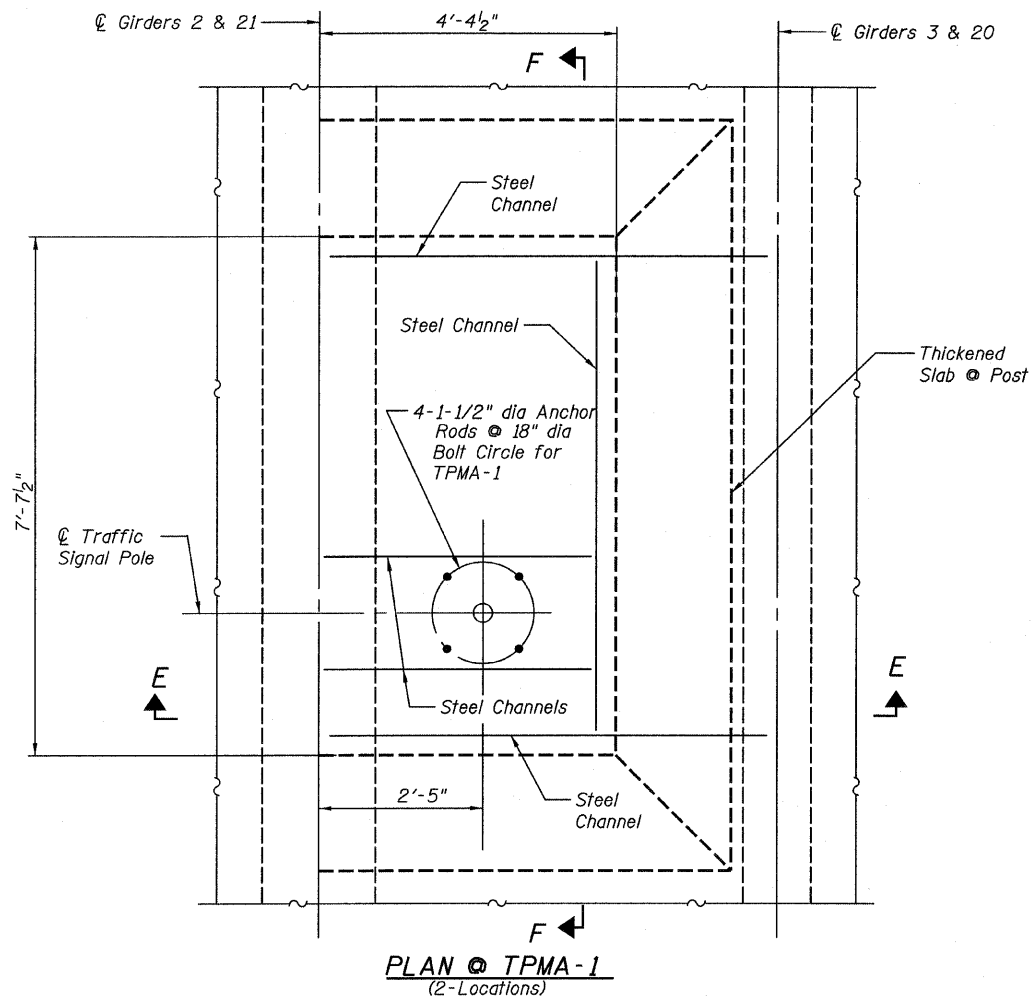


STATE OF ILLINOIS  
DEPARTMENT OF TRANSPORTATION



**NOTES:**

1. See Sheet 66 for locations of Island Mounted Traffic Posts.
2. See Sheet 40 & 41 for reinforcement details.
3. Anchor rod assemblies including bolts, nuts and washers are furnished and paid for with the respective traffic signal post pay item.
4. Anchor Rods shall be ASTM F1554 Grade 55 and galvanized according to Standard Specification 1006.09.
5. All Nuts and washers shall be galvanized. Grade, finish and style shall conform to the recommendations of ASTM F1554.

**TRAFFIC SIGNAL BASE DETAILS I**  
**CENTRAL / I-55**  
**STRUCTURE NO. 016-0724**

**TYLIN INTERNATIONAL**

DESIGNED -	REVISIONS
CHECKED - AMD,	NAME
DRAWN -	DATE
CHECKED - AMD,	
DATE - 03/25/2011	

SHEET NO. 67	F.A.I RTE.	SECTION	COUNTY	TOTAL SHEETS	SHEET NO.
	55	0711.2R & 1011.1BR	COOK	741	391
239 SHEETS	CONTRACT NO. 60999				
FED. ROAD DIST. NO. 1 ILLINOIS FED. AID PROJECT					

4/28/2011 11:51:41 AM p:\01345\structure\2\_Central\_Ave\_016-0724\155basedet1.dwg