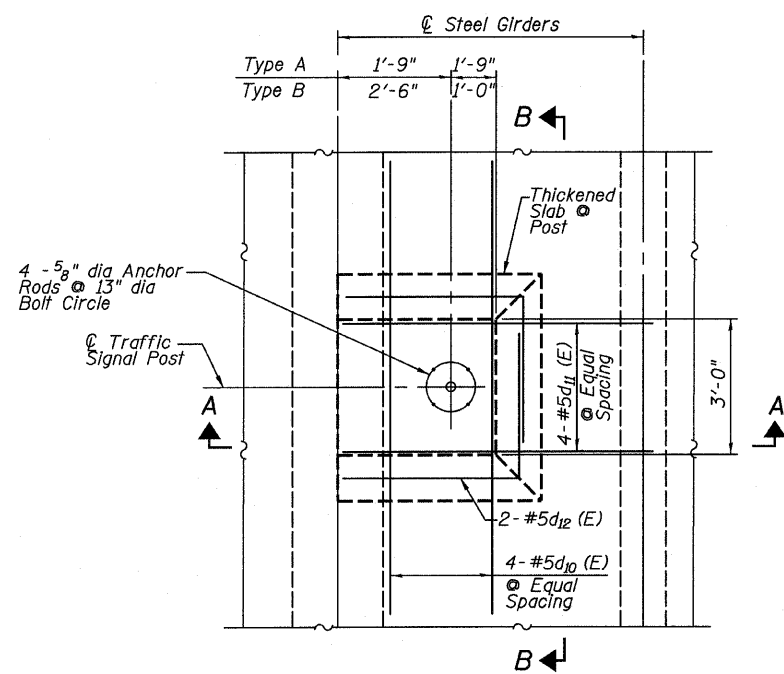
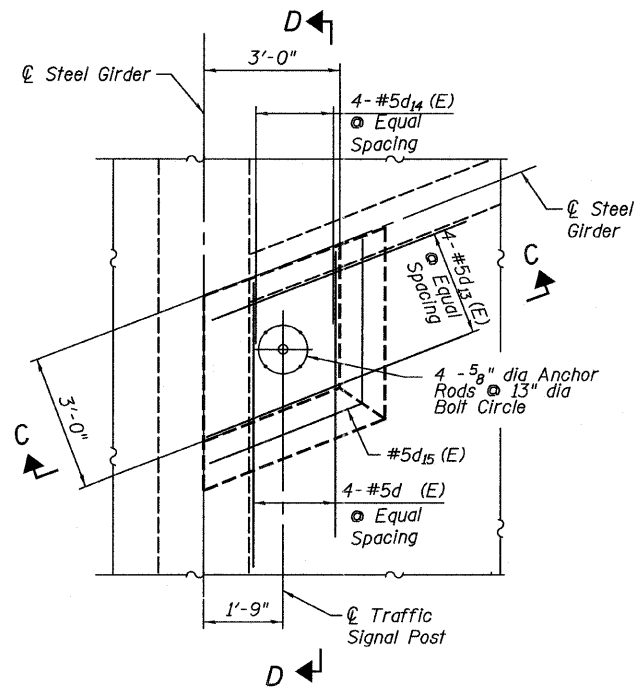


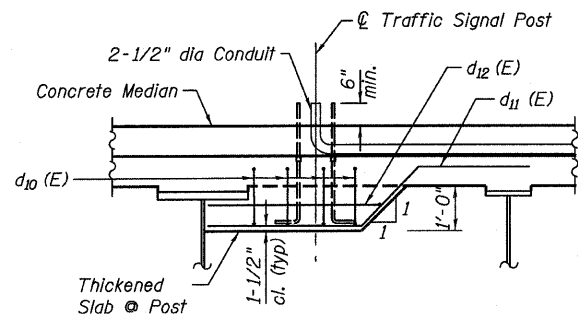
STATE OF ILLINOIS
DEPARTMENT OF TRANSPORTATION



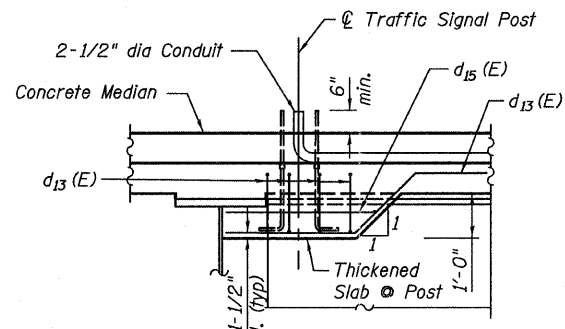
PLAN ISLAND MOUNTED TRAFFIC POST
TPIM-A & TPIM-B
(6 Locations)



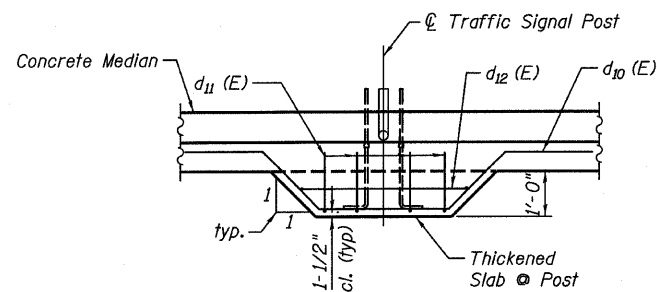
PLAN ISLAND MOUNTED TRAFFIC POST
TPIM-C
(2 Locations)



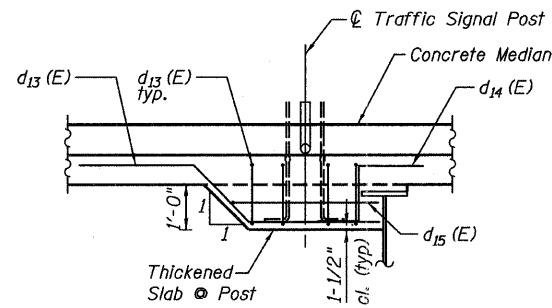
SECTION A-A



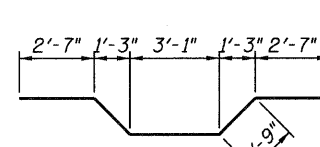
SECTION C-C



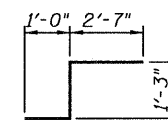
SECTION B-B



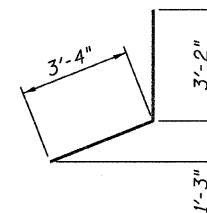
SECTION D-D



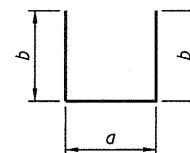
BAR d10 (E)



BAR d14 (E)

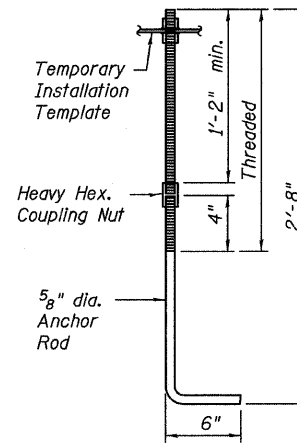


BAR d15 (E)

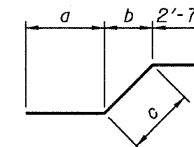


Bar	a	b
d16 (E)	6'-8"	2'-4"
d18 (E)	3'-8"	2'-4"

BARS d16 (E) & d18 (E)

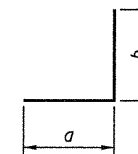


ANCHOR ROD
(24 Required)



Bar	a	b	c
d11 (E)	3'-4"	1'-3"	1'-9"
d13 (E)	3'-1"	1'-4"	1'-10"
d17 (E)	5'-1"	1'-11"	2'-8"
d19 (E)	4'-3"	1'-11"	2'-8"

BARS d11 (E), d13 (E),
d17 (E) & d19 (E)



Bar	a	b
d12 (E)	3'-8"	3'-3"
d20 (E)	4'-10"	2'-8"

BARS d12 (E) & d20 (E)

BILL OF MATERIAL

Bar	No.	Size	Length	Shape
d10 (E)	24	#5	11'-9"	
d11 (E)	24	#5	7'-8"	
d12 (E)	12	#5	6'-11"	
d13 (E)	16	#5	7'-6"	
d14 (E)	8	#5	4'-10"	
d15 (E)	2	#5	6'-6"	
d16 (E)	10	#5	11'-4"	
d17 (E)	16	#5	10'-4"	
d18 (E)	16	#5	6'-0"	
d19 (E)	16	#5	9'-6"	
d20 (E)	4	#5	7'-6"	
d21 (E)	2	#5	8'-7"	
Reinforcement Bars, Epoxy Coated			Pound	1,360

NOTES

- See Sheet 66 for locations of Island Mounted Traffic Posts
- Anchor rod assemblies including bolts, nuts and washers are furnished and paid for with the respective traffic signal post pay item.
- Anchor rods shall be ASTM F1554 Grade 55 and galvanized according to Standard Specification 1006.09.
- All nuts and washers shall be galvanized. Grade, finish and style shall conform to the recommendations of ASTM F1554.
- Concrete volume for thickened slab at traffic post included with Superstructure Bill of Material on Sheet 42.

TRAFFIC SIGNAL BASE DETAILS II
CENTRAL / I-55
STRUCTURE NO. 016-0724

TYLIN INTERNATIONAL

DESIGNED -	REVISIONS
CHECKED - AMD,	NAME
DRAWN -	DATE
CHECKED - AMD,	
DATE - 03/25/2011	

SHEET NO. 68	F.A.I. RTE. 55	SECTION 0711.2R & 1011.1BR	COUNTY COOK	TOTAL SHEETS 741	SHEET NO. 392
239 SHEETS		CONTRACT NO. 60999		FED. ROAD DIST. NO. 1 ILLINOIS FED. AID PROJECT	