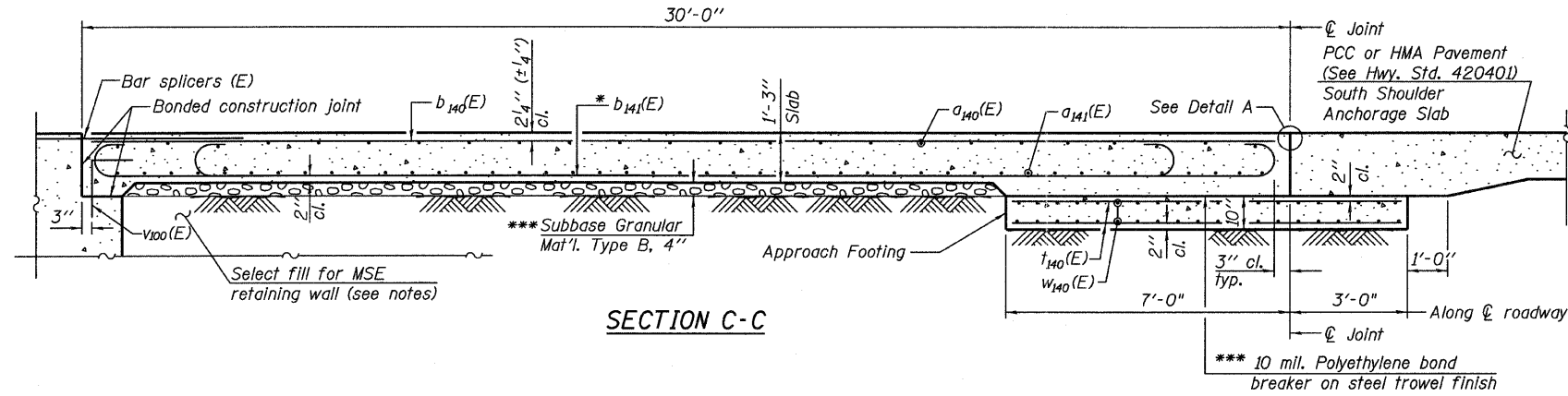


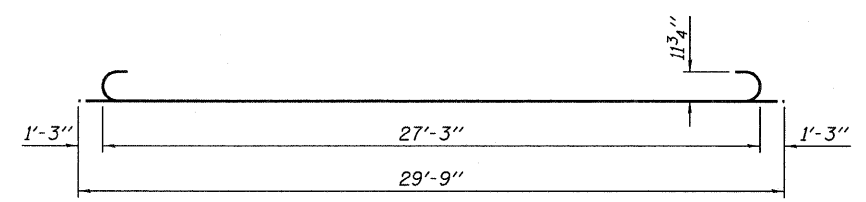
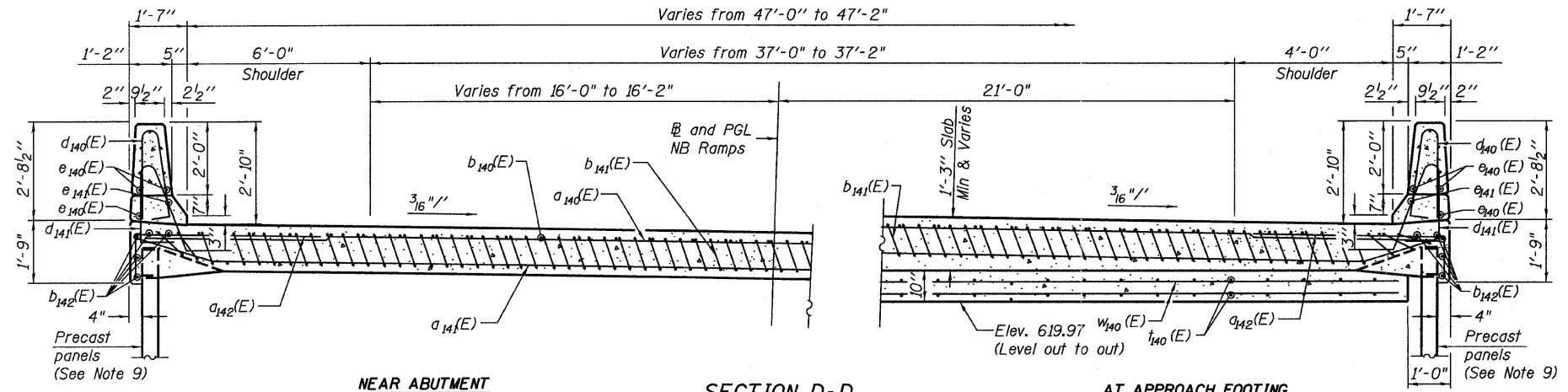
STATE OF ILLINOIS  
DEPARTMENT OF TRANSPORTATION



- Notes:
1. See sheet 70 for Detail A.
  2. Approach slab and parapet concrete shall be paid for as Concrete Superstructure.
  3. Approach footing concrete shall be paid for as Concrete Structures.
  4. Reinforcement shall be paid for as Reinforcement Bars, Epoxy Coated.
  5. For  $v_{100}(E)$  bar details, see sheet 211.
  6. The approach footing maximum applied service bearing pressure ( $Q_{max}$ ) = 2.0 ksf.
  7. For bar splicer details, see sheet 224.
  8. Cost of excavation for approach footing included with Concrete Structures.
  9. For MSE Retaining Wall details (S.N. 016-1304), See sheets 567-573 of 741.

The quantity for Bridge Deck Grooving & Protective Coat for approach slab is included with the quantities on sheet 46.

- \* Tilt #9  $b_{141}(E)$  bars as required to maintain clearance.
- \*\*\* Cost included with Concrete Superstructure.

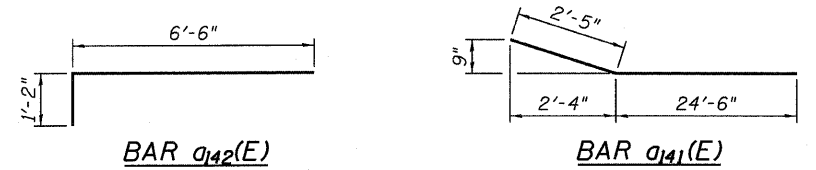
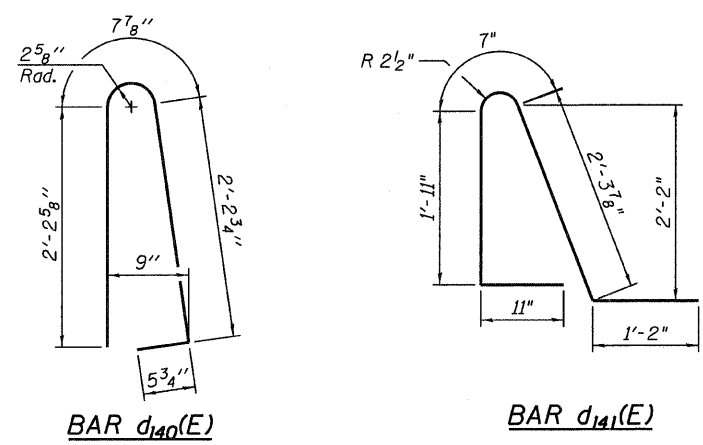
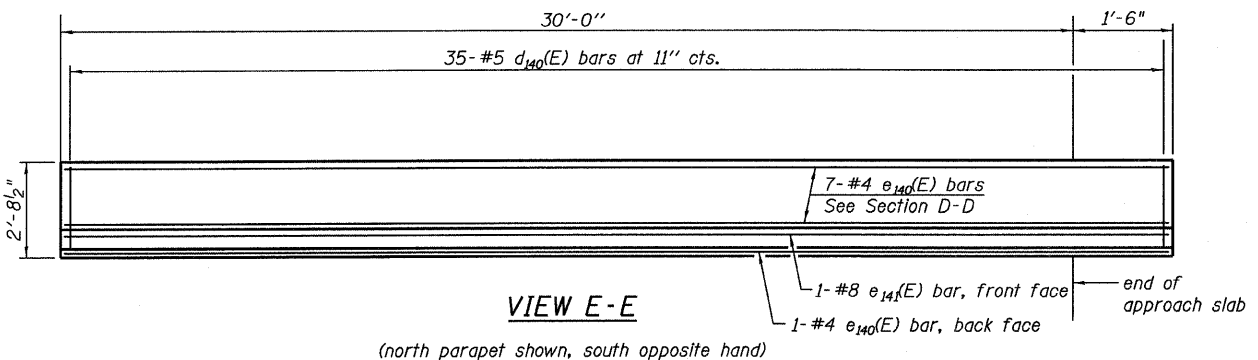


BILL OF MATERIAL

Bar	No.	Size	Length	Shape
$a_{140}(E)$	50	#4	26'-7"	—
$a_{141}(E)$	92	#5	26'-11"	—
$a_{142}(E)$	50	#6	7'-8"	—
$b_{140}(E)$	38	#4	29'-8"	—
$b_{141}(E)$	121	#9	29'-9"	—
$b_{142}(E)$	10	#5	31'-2"	—
$d_{140}(E)$	70	#5	5'-7"	⏏
$d_{141}(E)$	66	#5	6'-11"	⏏
$e_{140}(E)$	16	#4	31'-2"	—
$e_{141}(E)$	2	#8	31'-2"	—
$f_{140}(E)$	98	#4	9'-9"	—
$w_{140}(E)$	80	#5	25'-9"	—
Concrete Superstructure			Cu. Yd.	81.4
Concrete Structures			Cu. Yd.	14.9
(L) Reinforcement Bars, Epoxy Coated			Pound	21,550

(L) 2,790 pounds billed in Substructure Total in Total Bill of Material on sheet 2.

(Sheet 2 of 2)  
RAMP 1 APPROACH SLAB DETAILS  
STRUCTURE NO. 016-0724



TYLIN INTERNATIONAL	DESIGNED - CBS	REVISIONS		SHEET NO. 71	F.A.I RTE.	SECTION	COUNTY	TOTAL SHEETS	SHEET NO.							
	CHECKED - AMD,MMB	NAME	DATE							239 SHEETS	0711.2R & 1011.1BR	COOK	741	395		
	DRAWN - CBS														CONTRACT NO. 60999	
	CHECKED - AMD,MMB															FED. ROAD DIST. NO. 1   ILLINOIS   FED. AID PROJECT
	DATE - 03/25/2011															