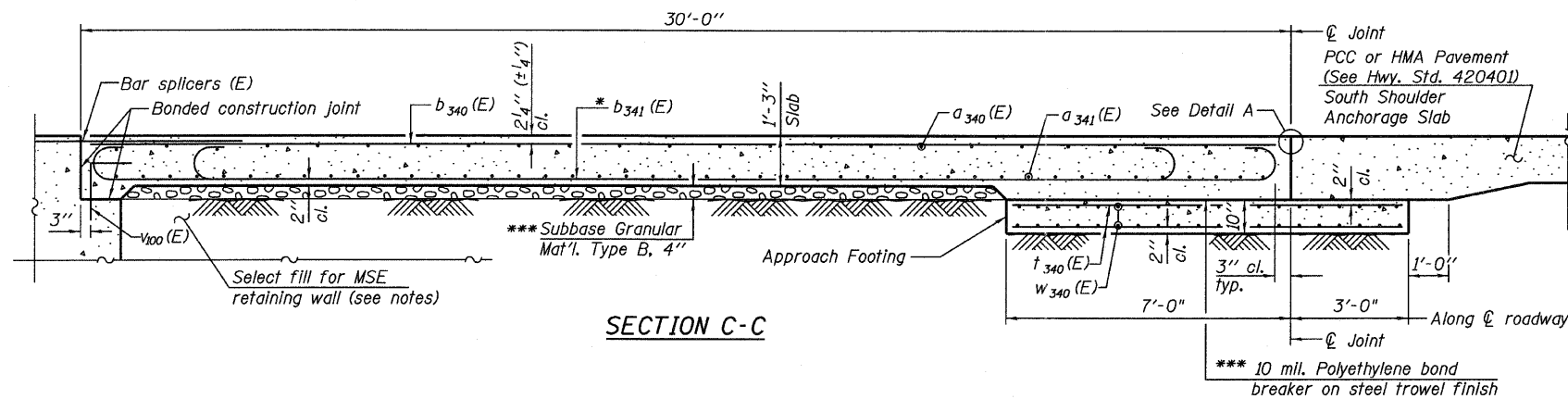


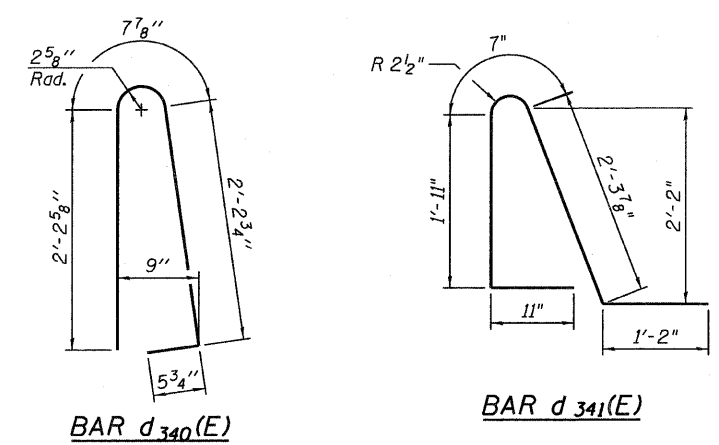
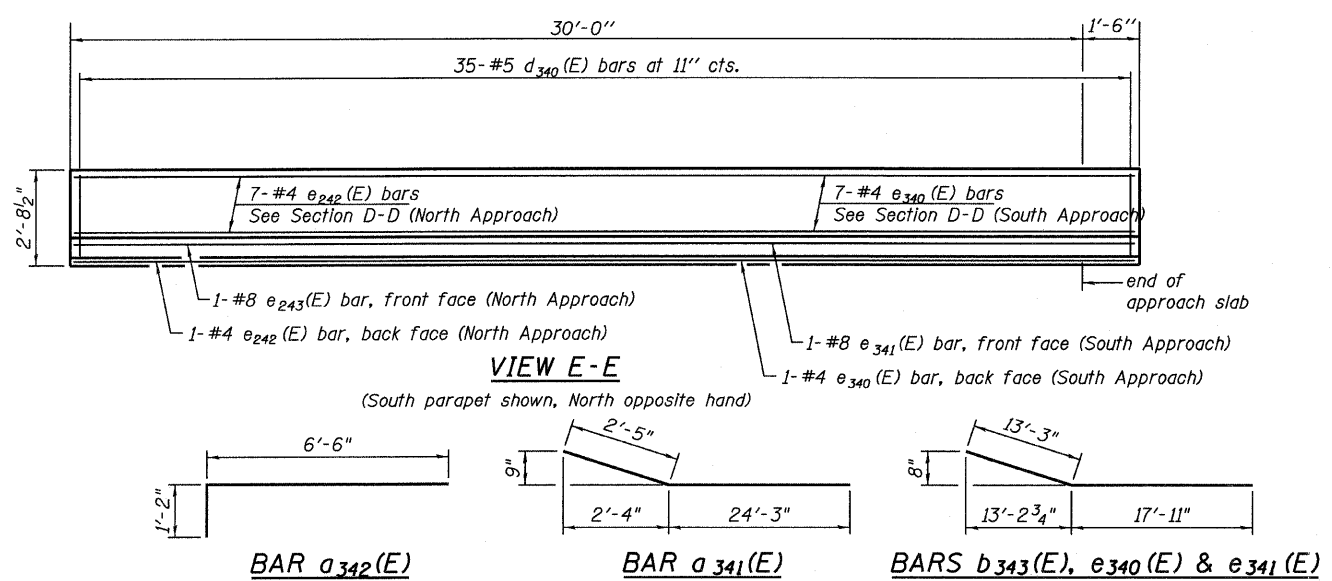
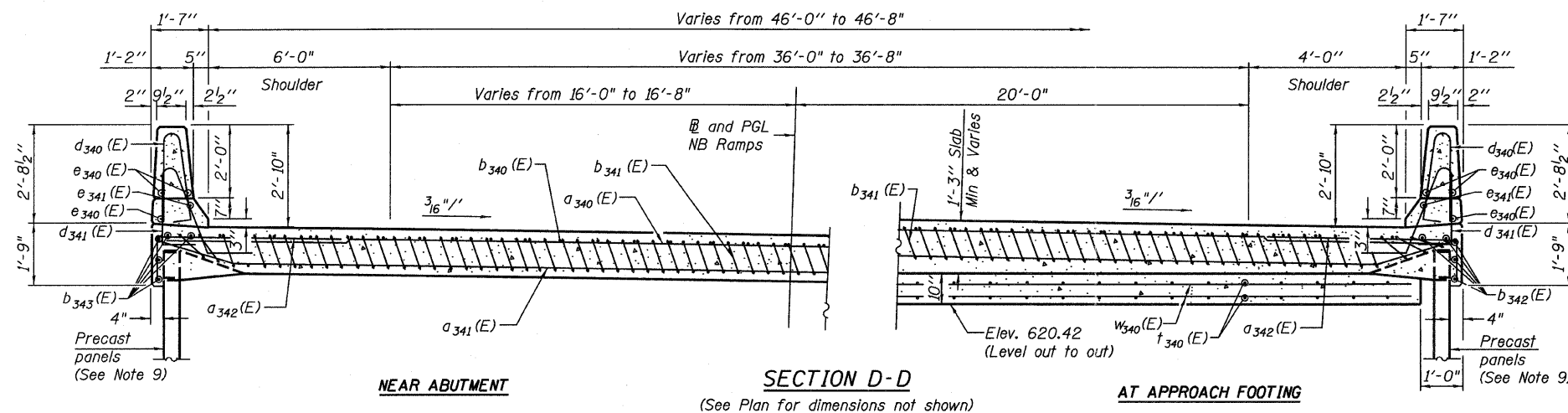
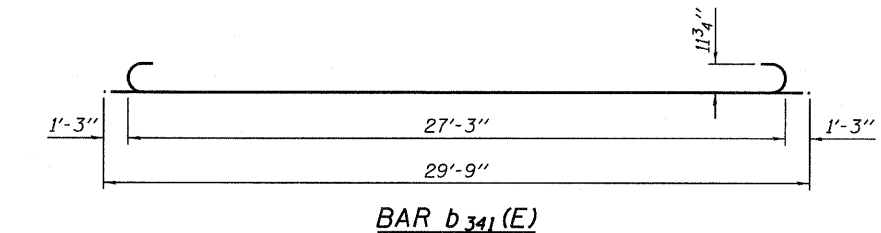
STATE OF ILLINOIS  
DEPARTMENT OF TRANSPORTATION



- Notes:
1. See sheet 74 for Detail A.
  2. Approach slab and parapet concrete shall be paid for as Concrete Superstructure.
  3. Approach footing concrete shall be paid for as Concrete Structures.
  4. Reinforcement shall be paid for as Reinforcement Bars, Epoxy Coated.
  5. For  $v_{100}(E)$  bar details, see sheet 217.
  6. The approach footing maximum applied service bearing pressure ( $Q_{max}$ ) = 2.0 ksf.
  7. For bar splicer details, see sheet 224.
  8. Cost of excavation for approach footing included with Concrete Structures.
  9. For MSE Retaining Wall details (S.N. 016-1306), See sheets 584-592 of 741.

The quantity for Bridge Deck Grooving & Protective Coat for approach slab is included with the quantities on sheet 54.

- \* Tilt #9  $b_{341}(E)$  bars as required to maintain clearance.  
\*\*\* Cost included with Concrete Superstructure.



**BILL OF MATERIAL**

Bar	No.	Size	Length	Shape
$d_{340}(E)$	50	#4	26'-3"	—
$d_{341}(E)$	92	#5	26'-8"	—
$d_{342}(E)$	50	#6	7'-8"	—
$b_{340}(E)$	38	#4	29'-8"	—
$b_{341}(E)$	120	#9	29'-9"	—
$b_{342}(E)$	5	#5	31'-2"	—
$b_{343}(E)$	5	#5	31'-2"	—
$d_{340}(E)$	70	#5	5'-7"	△
$d_{341}(E)$	66	#5	6'-11"	△
$e_{340}(E)$	8	#4	31'-2"	—
$e_{341}(E)$	1	#8	31'-2"	—
$e_{342}(E)$	8	#4	31'-2"	—
$e_{343}(E)$	1	#8	31'-2"	—
$t_{340}(E)$	96	#4	9'-9"	—
$w_{340}(E)$	80	#5	25'-3"	—
Concrete Superstructure		Cu. Yd.	80.3	
Concrete Structures		Cu. Yd.	14.6	
(1.) Reinforcement Bars, Epoxy Coated		Pound	21,400	

(1.) 2,775 pounds billed in Substructure  
Total in Total Bill of Material on sheet 2.

(Sheet 2 of 2)  
**RAMP 3 APPROACH SLAB DETAILS**  
**STRUCTURE NO. 016-0724**

TYLIN INTERNATIONAL	DESIGNED - CBS	REVISIONS		SHEET NO. 75	F.A.I. RTE.	SECTION	COUNTY	TOTAL SHEETS	SHEET NO.	
	CHECKED - AMD, MMB	NAME	DATE		55	0711.2R & 1011.1BR	COOK	741	399	
	DRAWN - CBS				239 SHEETS	CONTRACT NO. 60999				
	CHECKED - AMD, MMB				FED. ROAD DIST. NO. 1 ILLINOIS FED. AID PROJECT					
	DATE - 03/25/2011									

4/28/2011 11:51:51 AM p:\01345\structure\2\_Central\_Ave\_016-0724\55-3appr-02.dgn