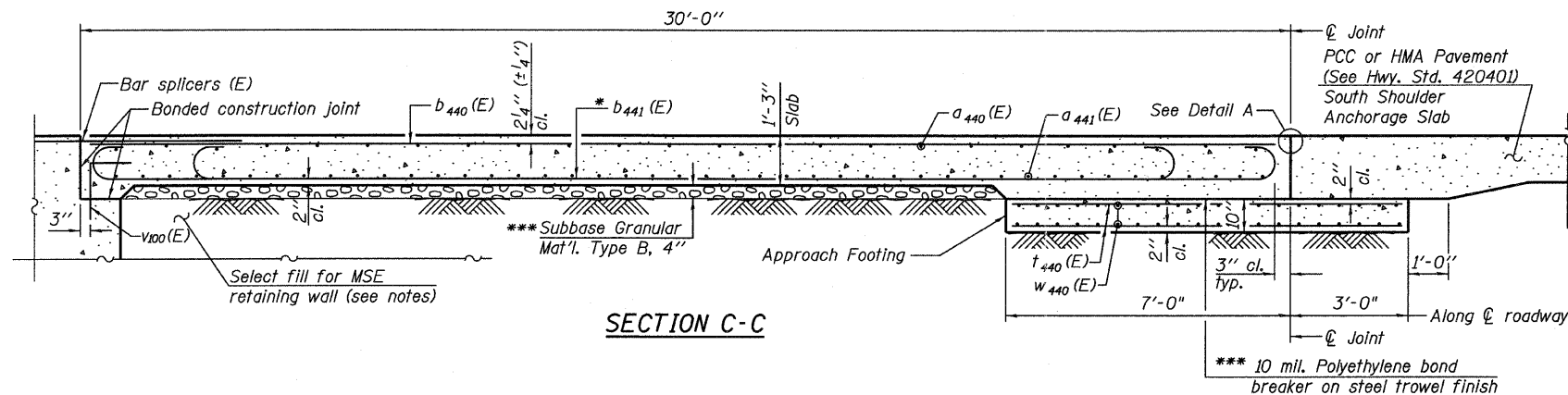
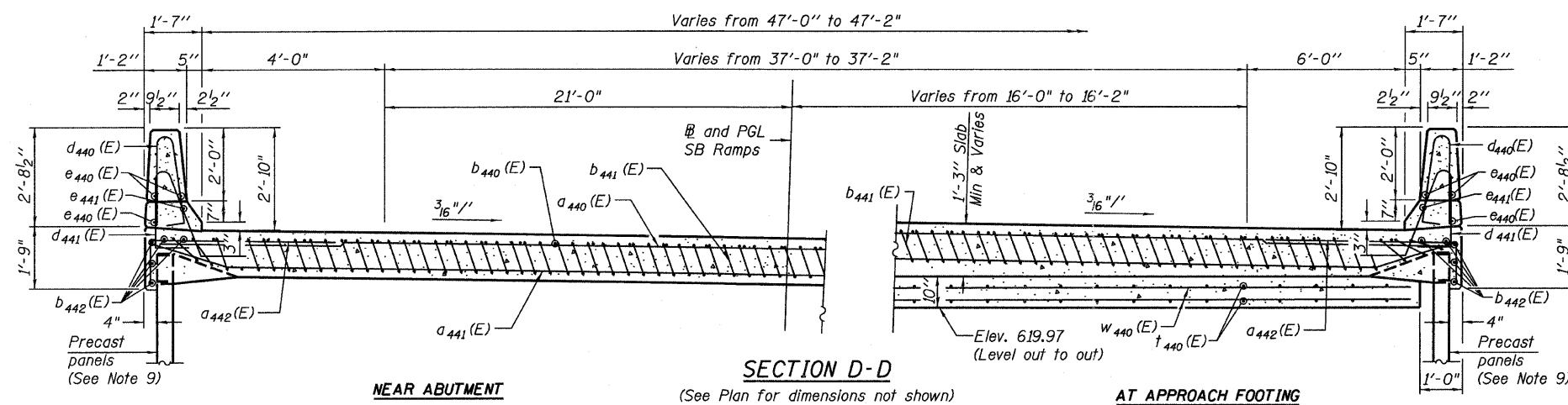


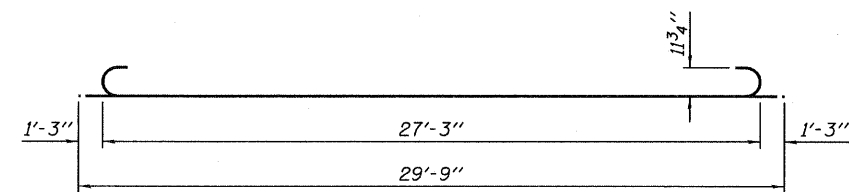
STATE OF ILLINOIS
DEPARTMENT OF TRANSPORTATION



- Notes:
1. See sheet 76 for Detail A.
 2. Approach slab and parapet concrete shall be paid for as Concrete Superstructure.
 3. Approach footing concrete shall be paid for as Concrete Structures.
 4. Reinforcement shall be paid for as Reinforcement Bars, Epoxy Coated.
 5. For $v_{100}(E)$ bar details, see sheet 220.
 6. The approach footing maximum applied service bearing pressure (Q_{max}) = 2.0 ksf.
 7. For bar splicer details, see sheet 224.
 8. Cost of excavation for approach footing included with Concrete Structures.
 9. For MSE Retaining Wall details (S.N. 016-1307), See sheets 593-603 of 741.
- The quantity for Bridge Deck Grooving & Protective Coat for approach slab is included with the quantities on sheet 58.



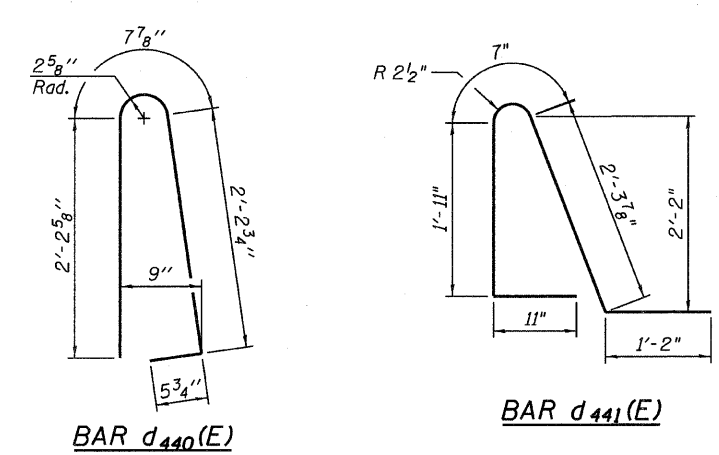
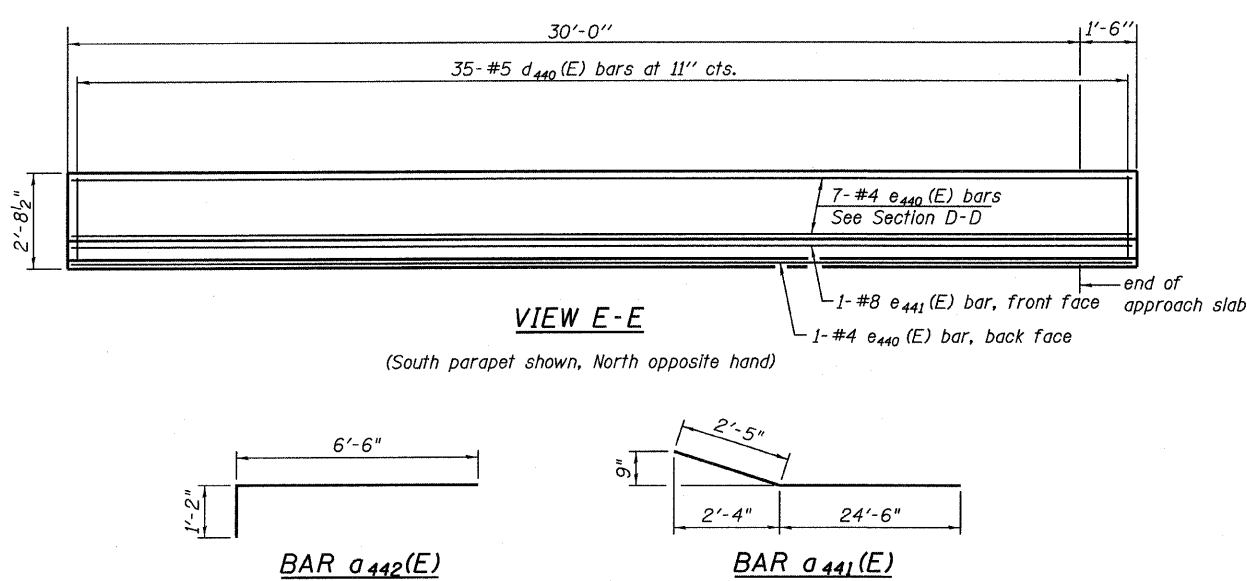
- * Tilt #9 $b_{441}(E)$ bars as required to maintain clearance.
- *** Cost included with Concrete Superstructure.



BILL OF MATERIAL

Bar	No.	Size	Length	Shape
$a_{440}(E)$	50	#4	26'-7"	—
$a_{441}(E)$	92	#5	26'-11"	—
$a_{442}(E)$	50	#6	7'-8"	—
$b_{440}(E)$	38	#4	29'-8"	—
$b_{441}(E)$	121	#9	29'-9"	—
$b_{442}(E)$	10	#5	31'-2"	—
$d_{440}(E)$	70	#5	5'-7"	Δ
$d_{441}(E)$	66	#5	6'-11"	Δ
$e_{440}(E)$	16	#4	31'-2"	—
$e_{441}(E)$	2	#8	31'-2"	—
$t_{440}(E)$	98	#4	9'-9"	—
$w_{440}(E)$	80	#5	25'-9"	—
Concrete Superstructure		Cu. Yd.	81.4	
Concrete Structures		Cu. Yd.	14.9	
(1.) Reinforcement Bars, Epoxy Coated		Pound	21,550	

(1.) 2,790 pounds billed in Substructure Total in Total Bill of Material on sheet 2.



(Sheet 2 of 2)
RAMP 4 APPROACH SLAB DETAILS
STRUCTURE NO. 016-0724

TYLIN INTERNATIONAL	DESIGNED - CBS	REVISIONS		SHEET NO. 77	F.A.I. RTE.	SECTION	COUNTY	TOTAL SHEETS	SHEET NO.	
	CHECKED - AMD,MMB	NAME	DATE		55	0711.2R & 1011.1BR	COOK	741	401	
	DRAWN - CBS				CONTRACT NO. 60999					
	CHECKED - AMD,MMB				FED. ROAD DIST. NO. 1 ILLINOIS FED. AID PROJECT					
	DATE - 03/25/2011									

4/28/2011 11:51:54 AM p:\01345\structure\02_Centrol_Ave_016-0724\155-4appr02.dgn