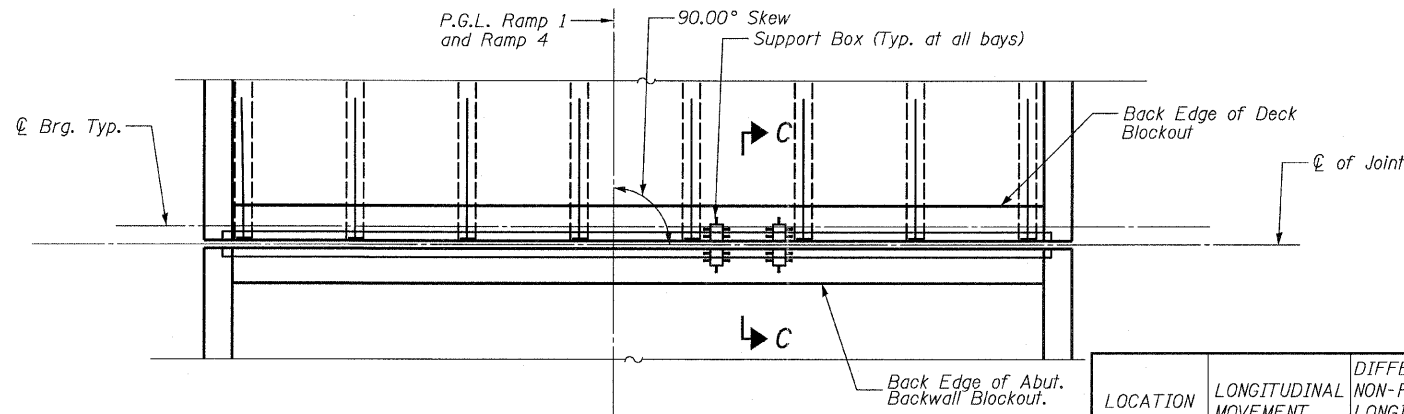
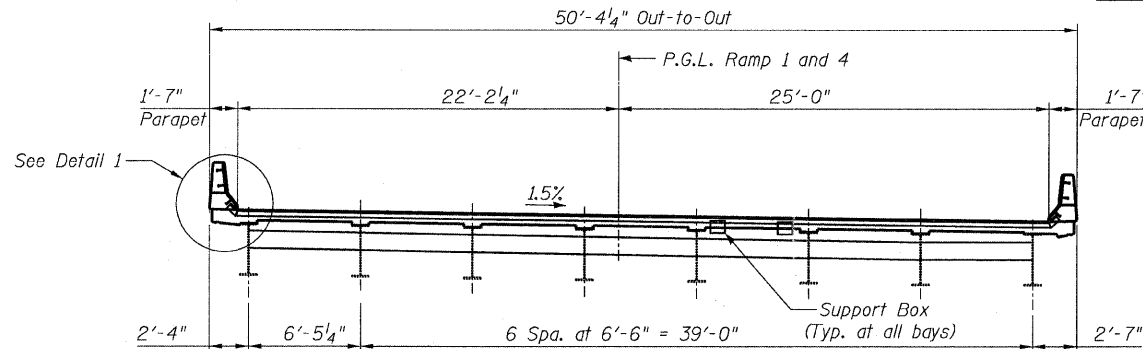


STATE OF ILLINOIS  
DEPARTMENT OF TRANSPORTATION

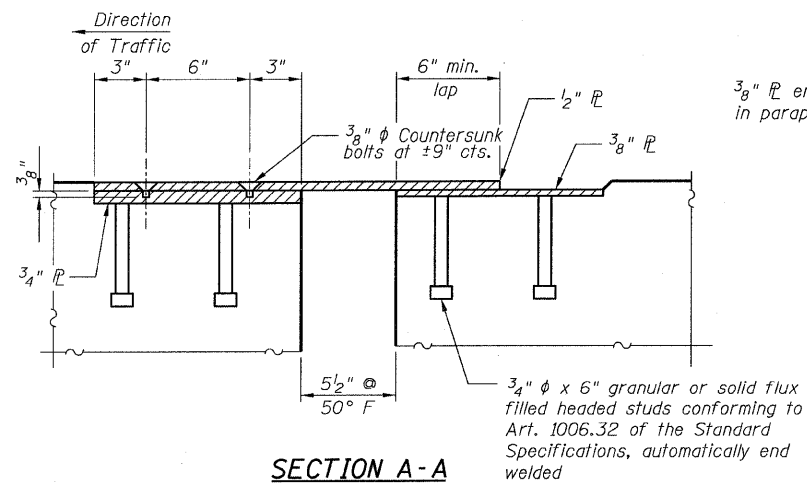
(For Ramp 1, Ramp 4  
Opposite Hand.)



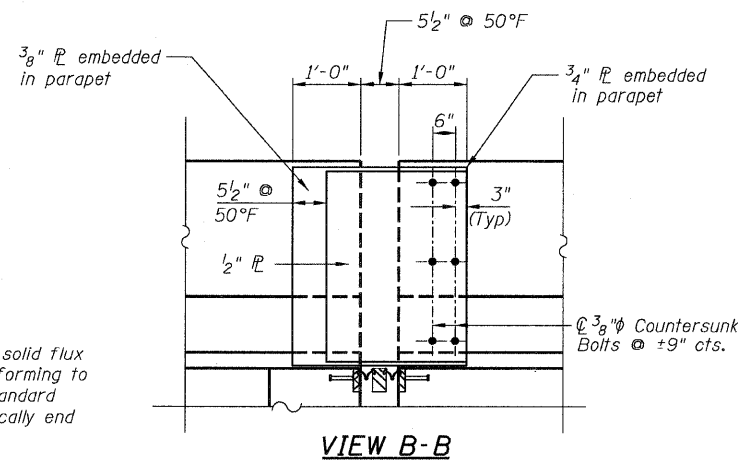
PLAN VIEW RAMP 1  
(Ramp 4 Opposite Hand)



CROSS SECTION  
(Looking Upstation Ramp 1  
Looking Downstation Ramp 4)

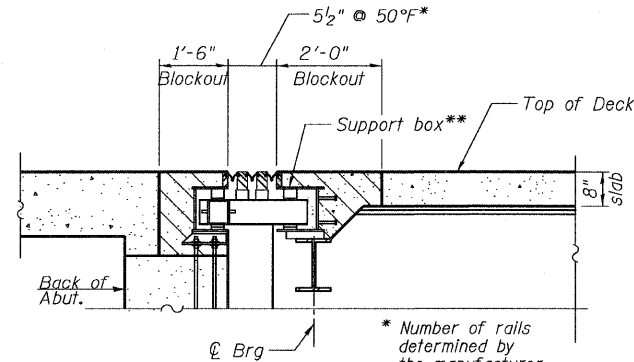


SECTION A-A



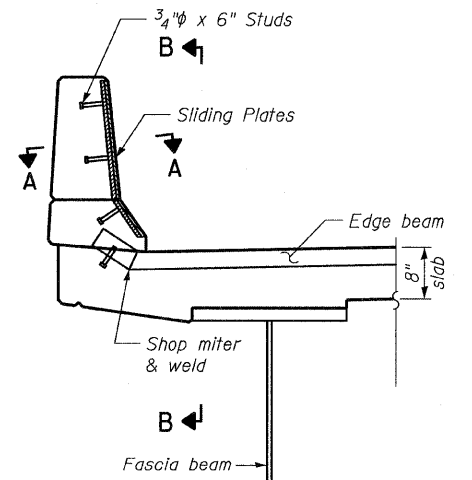
VIEW B-B

Note: Parapet shown. Studs not shown for clarity.



SECTION C-C

\* Number of rails determined by the manufacturer  
\*\* Rigidly attached to cross frames and beams by adjustable brackets, studs or shims



DETAIL 1

RAMP 1 AND 4 MODULAR EXPANSION  
JOINT DETAILS AT ABUTMENT  
STRUCTURE NO. 016-0724

GENERAL NOTES

- The expansion joint device shall be a prefabricated modular assembly with multiple support bars and separator beams, providing a continuous seal across the deck.
- All splices of center beams and edge beams shall be full penetration welds. Upturn splices may be partial penetration welds.
- Joint shall be fabricated according to the manufacturer's recommendations and as described in the GBSP No. 18 for Modular Expansion Joint and as approved by the Engineer.
- Joint openings shall be adjusted according to Article 520.04 of the Standard Specifications when the concrete blockout is cast at an ambient temperature other than 50° F.
- Joint shall be fabricated to conform to the roadway profile and cross slope.
- The cost of furnishing all material for the sliding plate assemblies at the parapets and median barrier shall be included with Furnishing Modular Expansion Joints. The sliding plate assembly shall be galvanized.
- Countersunk bolts and concrete inserts shall be Hot-Dipped Galvanized according to AASHTO M232.
- Barrier plates to be AASHTO M270, Grade 36 and to be Hot-Dipped Galvanized according to AASHTO M111 after fabrication.
- All anchor studs are furnished under separate contract.
- Modular expansion joint shall be assembled in their final relative position with the ends in place for shop inspection and acceptance.
- The modular expansion joint shall be either the Maurer Swivel System by the D.S. Brown Company or the WABO X-Cel System by the Watson Bowman Acme Corporation.
- The modular expansion joint shall be designed in accordance with the latest AASHTO Specifications for HS20-44 truck loading with impact.

BILLS OF MATERIAL

LOCATION	ITEM	UNIT	TOTAL
Ramp 1	Modular Expansion Joint-Swivel 6" (Erect Only)	Foot	47.0
Ramp 4	Modular Expansion Joint-Swivel 6" (Erect Only)	Foot	47.0

TYLIN INTERNATIONAL	DESIGNED -	REVISIONS	
	CHECKED - AMD,	NAME	DATE
	DRAWN - MRB		
	CHECKED - AMD,		
	DATE - 03/25/2011		

SHEET NO. 81	F.A.I RTE.	SECTION	COUNTY	TOTAL SHEETS	SHEET NO.
	239 SHEETS	55	0711.2R & 1011.1BR	COOK	741 405
			CONTRACT NO. 60999		
FED. ROAD DIST. NO. 1 ILLINOIS FED. AID PROJECT					