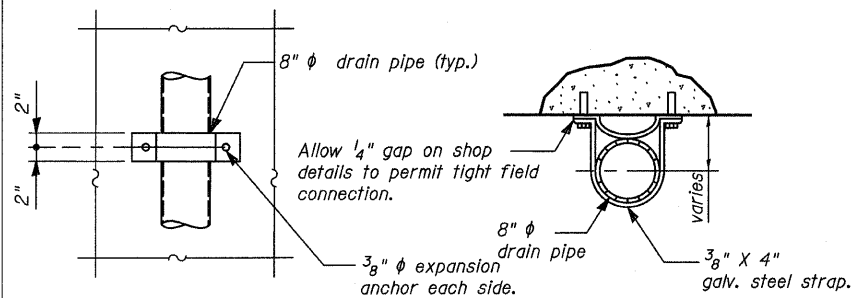
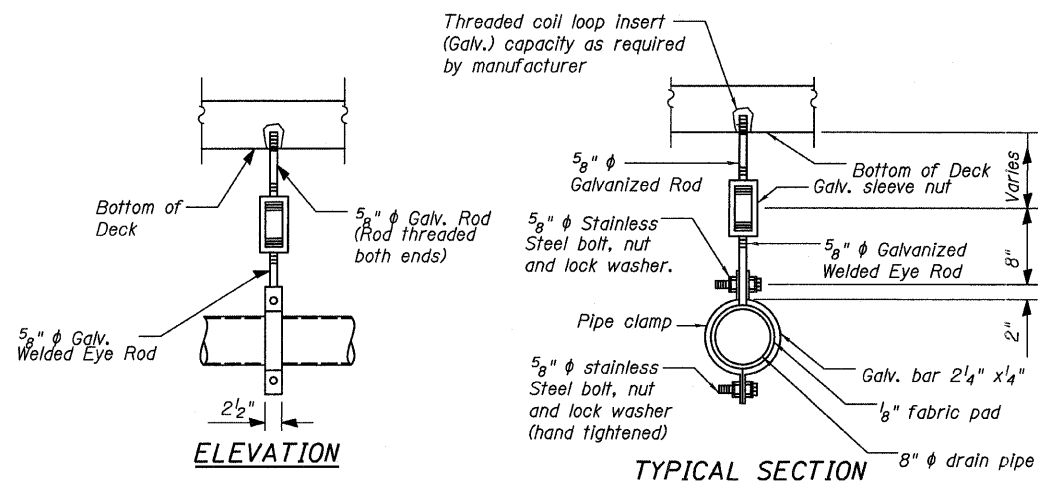


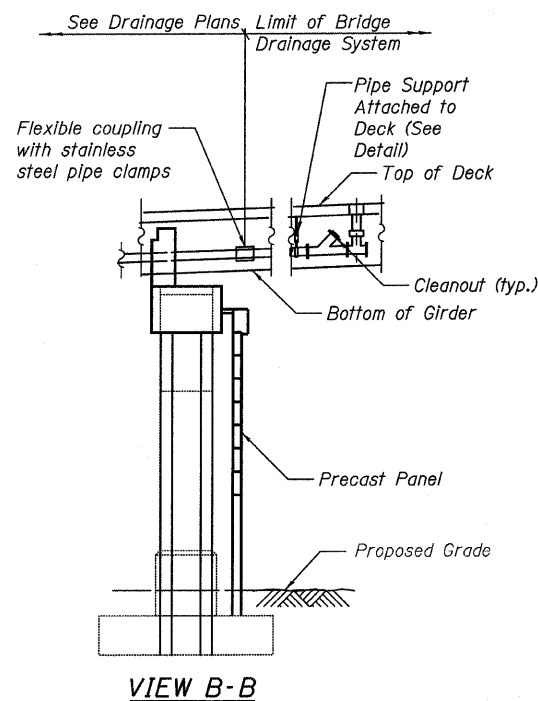
STATE OF ILLINOIS
DEPARTMENT OF TRANSPORTATION



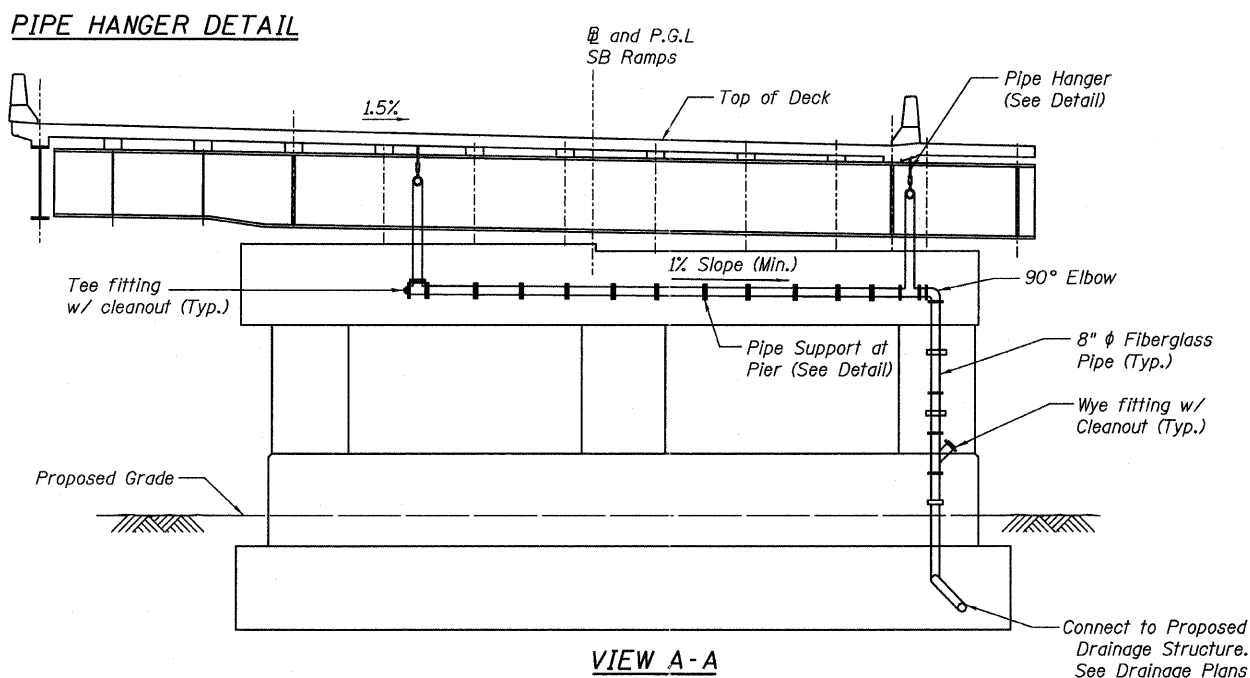
ELEVATION
PLAN
PIPE SUPPORT DETAIL AT PIER



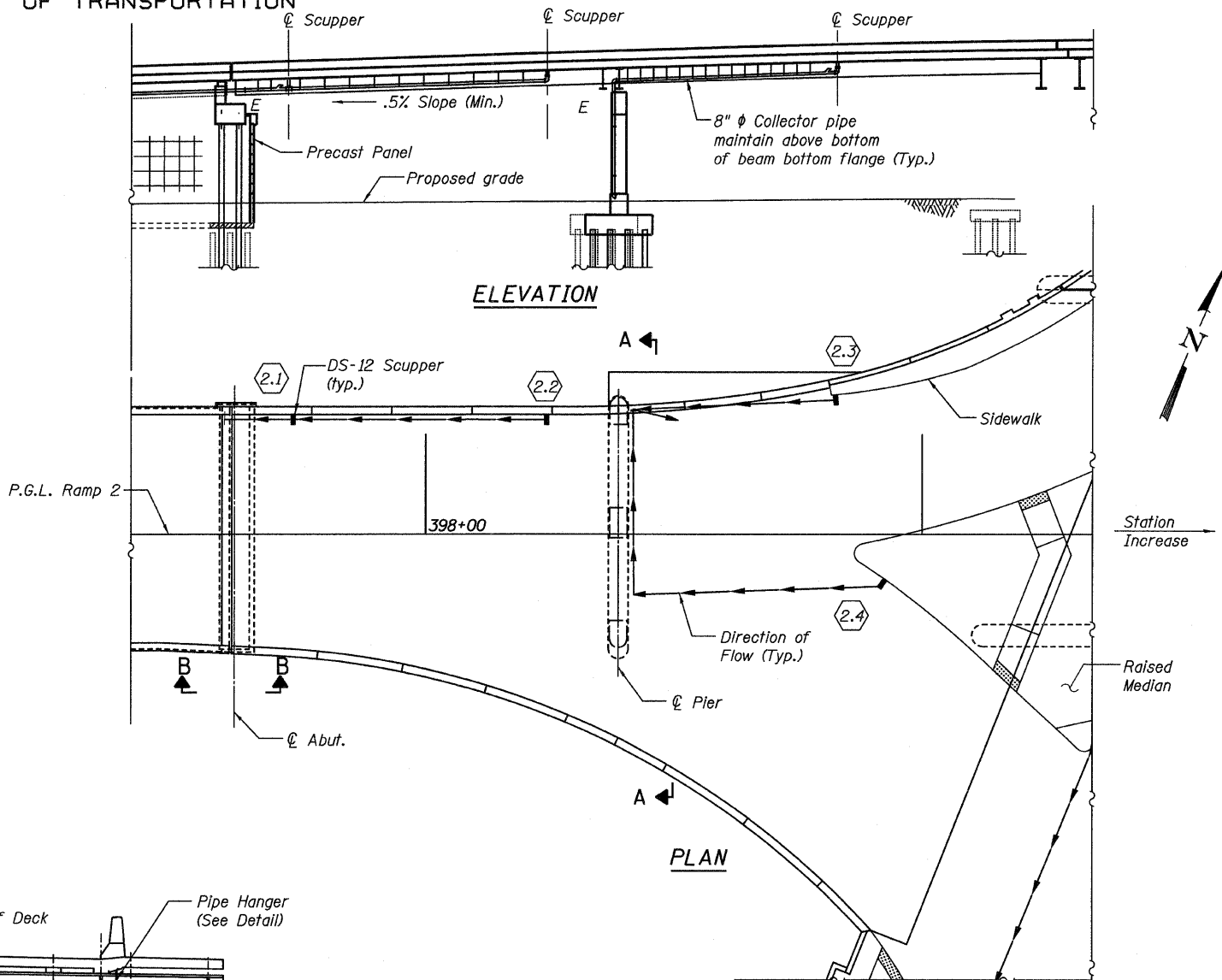
TYPICAL SECTION



VIEW B-B



VIEW A-A



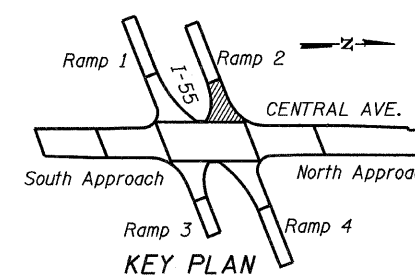
SCUPPER LOCATION TABLE*

Scupper No.	Type	Station	Offset
2.1	DS-12	397+73.00	24.00 (L)
2.2	DS-12	398+24.00	24.00 (L)
2.3	DS-12	398+82.50	28.00 (L)
2.4	DS-12	398+93.00	9.25 (R)

*Stations & offsets measured from SB Ramp Baseline to scupper face of barrier or curb

NOTES:

1. Bridge Drainage System limits to coupling at Abut. and catch basin or inlet at pier.
2. See sheet 83 for additional notes.



KEY PLAN
DRAINAGE SYSTEM RAMP 2
S.N. 016-0724

TYLIN INTERNATIONAL	DESIGNED - JMA	REVISIONS	
	CHECKED - AMD,	NAME	DATE
	DRAWN - JMA		
	CHECKED - AMD,		
	DATE - 03/25/2011		

SHEET NO. 85	F.A.I. RTE.	SECTION	COUNTY	TOTAL SHEETS	SHEET NO.
	55	0711.2R & 1011.1BR	COOK	741	409
239 SHEETS	CONTRACT NO. 60999				
FED. ROAD DIST. NO. 1 ILLINOIS FED. AID PROJECT					

4/28/2011 12:02:46 PM p:\01345\strucur\02_Central_Ave_016-0724\155-2.dwg