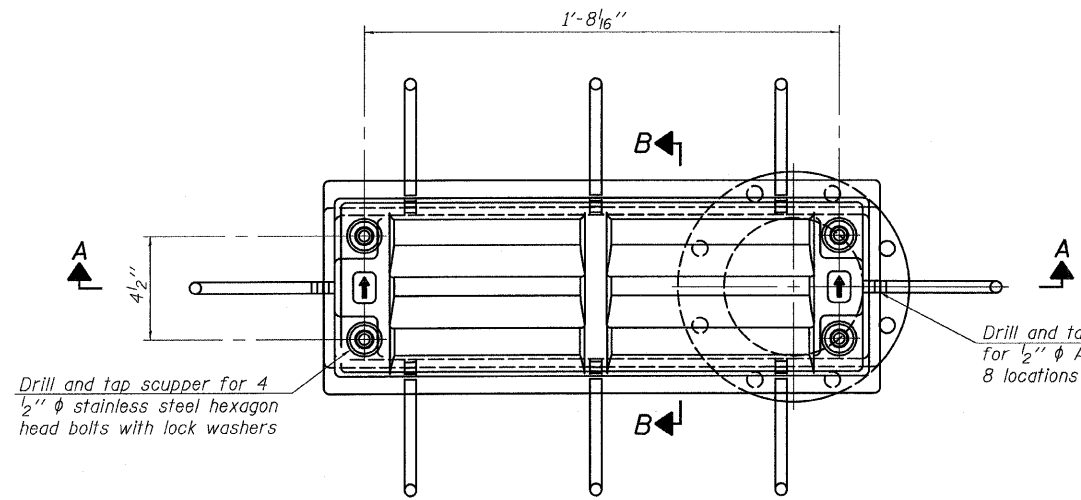
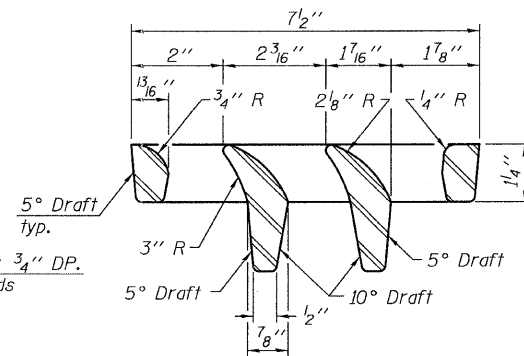


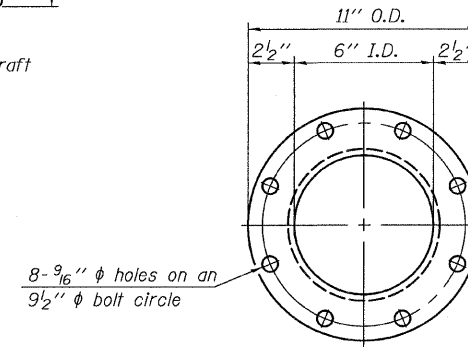
STATE OF ILLINOIS  
DEPARTMENT OF TRANSPORTATION



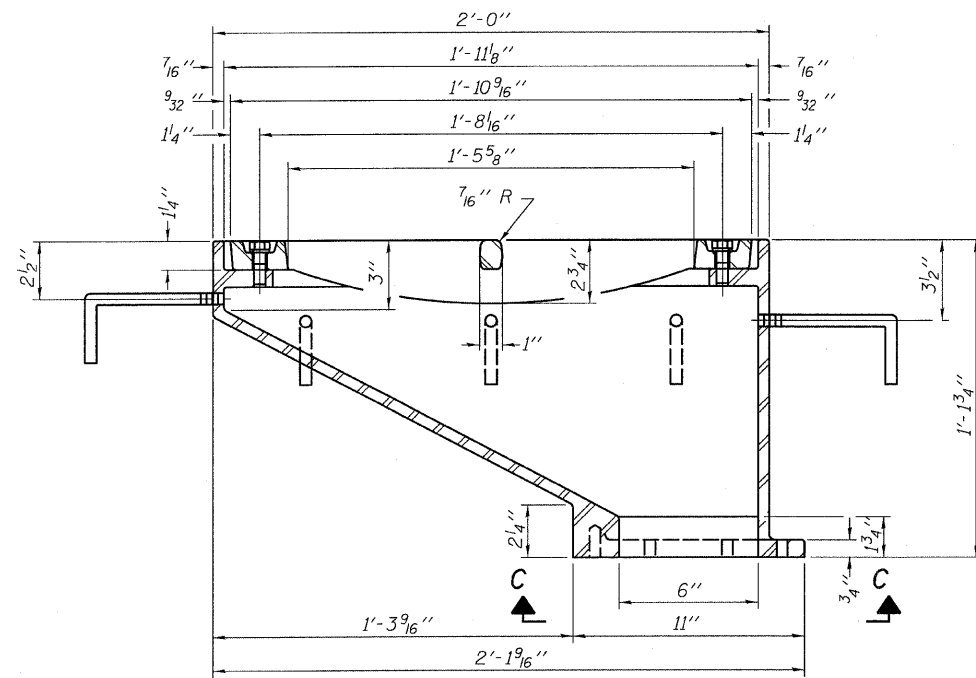
PLAN



VANE GRATE DETAIL

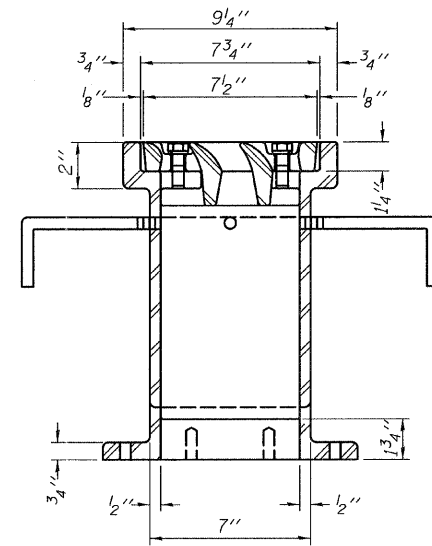


VIEW C-C



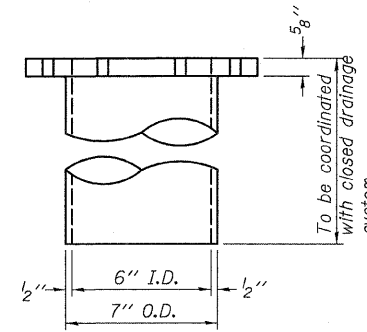
SECTION A-A

See sheets 83 thru 87 of 239 for scupper locations relative to parapet

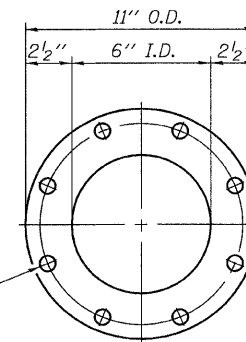


SECTION B-B

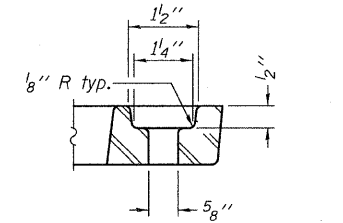
Drill and tap 8 holes for 1/2"-13 bolts on a 9 1/2" φ bolt circle. (2 blind holes are 1/4" deep, 6 thru holes)



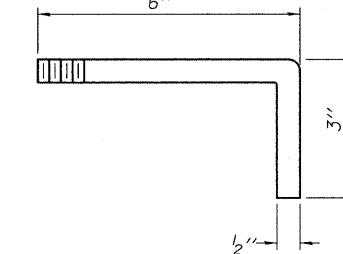
DOWNSPOUT



VIEW C-C



BOLT HOLE DETAIL



ANCHOR STUD DETAIL

BILL OF MATERIAL

ITEM	UNIT	QUANTITY
Drainage Scupper, DS-12	Each	16

DRAINAGE SCUPPER, DS-12  
STRUCTURE NO. 016-0724

DS-12 11-1-09

TYLIN INTERNATIONAL

DESIGNED - JMA	REVISIONS	
CHECKED - AMD	NAME	DATE
DRAWN - JMA		
CHECKED - AMD		
DATE - 03/25/2011		

SHEET NO. 88	F.A.I. RTE.	SECTION	COUNTY	TOTAL SHEETS	SHEET NO.
239 SHEETS	55	0711.2R & 1011.1BR	COOK	741	412
			CONTRACT NO. 60999		
FED. ROAD DIST. NO. 1 ILLINOIS FED. AID PROJECT					

pi:\01345\structure\c2\_Centrol\_Ave\_016-0724\_155c2ds12.dgn 5/9/2011