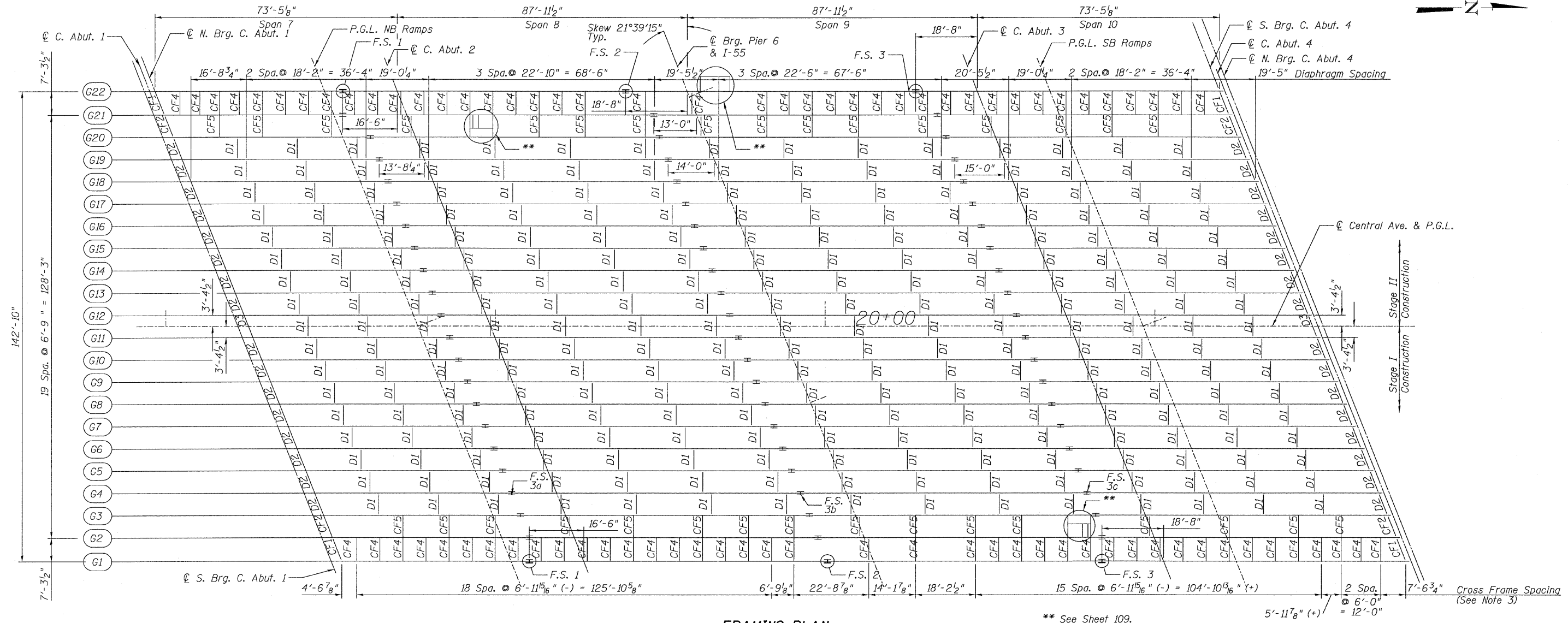


STATE OF ILLINOIS
DEPARTMENT OF TRANSPORTATION



FRAMING PLAN

** See Sheet 109.

5'-11 7/8" (+)
2 Spa. @ 6'-0" = 12'-0"

NOTES:

- Structural Steel for Girders, Splice Plates, and Bearing Plates shall conform to the requirements of AASHTO M 270 Grade 50. All other steel shall conform to the requirements of AASHTO M 270 Grade 36.
- Work this sheet with sheets 99 thru 109.
- Cross Frame spacing on G22 is same as G1, opposite hand.

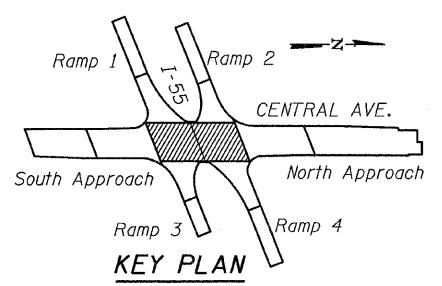
TOP OF BEAM ELEVATIONS*

	☉ N. Brg. C. Abut. 1	Field Splice 3a	☉ Brg. C. Abut. 2	Field Splice 3b	☉ Brg. Pier 6	Field Splice 3c	☉ Brg. C. Abut. 3	☉ S. Brg. C. Abut. 4
G3	626.27	627.15	627.29	628.05	628.11	628.43	628.50	628.84
G4	626.36	627.25	627.39	628.16	628.22	628.55	628.62	628.96
G5	626.44	627.34	627.49	628.28	628.34	628.68	628.75	629.09
G6	626.53	627.44	627.59	628.39	628.46	628.80	628.87	629.21
G7	626.61	627.54	627.69	628.51	628.58	628.93	629.00	629.34
G8	626.68	627.62	627.77	628.61	628.67	629.04	629.11	629.45
G9	626.73	627.68	627.83	628.69	628.76	629.13	629.20	629.54
G10	626.78	627.74	627.90	628.76	628.84	629.22	629.29	629.63
G11	626.82	627.80	627.96	628.84	628.92	629.31	629.38	629.72
G12	626.77	627.76	627.92	628.82	628.90	629.30	629.37	629.71
G13	626.62	627.61	627.78	628.70	628.77	629.19	629.26	629.60
G14	626.46	627.47	627.64	628.57	628.65	629.08	629.15	629.49
G15	626.30	627.33	627.50	628.44	628.53	628.97	629.04	629.38
G16	626.13	627.16	627.34	628.30	628.39	628.84	628.91	629.25
G17	625.94	626.98	627.16	628.14	628.23	628.70	628.76	629.11
G18	625.74	626.80	626.99	627.98	628.07	628.55	628.62	628.96
G19	625.55	626.62	626.81	627.82	627.91	628.41	628.48	628.82
G20	625.36	626.44	626.63	627.65	627.75	628.26	628.33	628.67

TOP OF WEB ELEVATIONS*

	☉ N. Brg. C. Abut. 1	Field Splice 1	☉ Brg. C. Abut. 2	Field Splice 2	☉ Brg. Pier 6	Field Splice 3	☉ Brg. C. Abut. 3	☉ S. Brg. C. Abut. 4
G1	625.89	626.69	626.85	627.58	627.64	627.94	628.02	628.37
G2	626.07	626.96	627.09	627.83	627.90	628.21	628.28	628.60
G21	625.05	626.07	626.35	627.31	627.48	628.00	628.09	628.41
G22	624.74	625.80	626.04	627.04	627.19	627.72	627.81	628.16

* For Fabrication only



FRAMING PLAN
CENTRAL/I-55
STRUCTURE NO. 016-0724

TYLIN INTERNATIONAL	DESIGNED - JMA	REVISIONS		SHEET NO. 93	F.A.I. RTE.	SECTION	COUNTY	TOTAL SHEETS	SHEET NO.
	CHECKED - AMD, PDF	NAME	DATE		55	0711.2R & 1011.1BR	COOK	741	417
	DRAWN - JMA				239 SHEETS	CONTRACT NO. 60999			
	CHECKED - AMD, PDF				FED. ROAD DIST. NO. 1 ILLINOIS FED. AID PROJECT				
	DATE - 03/25/2011								

p:\01345\structure\2_Central_Ave_016-0724_155c2f.rame.dgn 4/28/2011 12:02:59 PM