

STATE OF ILLINOIS
DEPARTMENT OF TRANSPORTATION

NOTES:

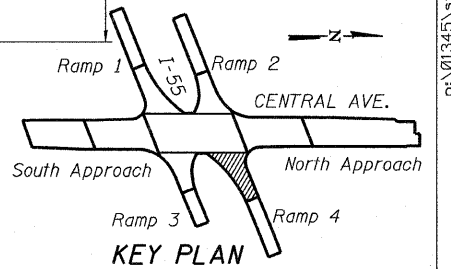
1. Work this sheet with sheets 57 & 170 through 189.
2. Structural steel for beams, girders, splice plates, and connection plates shall conform to the requirement of AASHTO M270 GR 50. All other steel shall conform to the requirements of AASHTO M270 GR 36.
3. F.S. denotes field splice.
4. FB denotes floor beam.
5. F.P. denotes framing point.

ANGLE "A"

Girder	Angle "A"
Carrier Girder	35°34'48"
FB-4.1	59°2'44"
FB-4.2	60°25'8"
FB-4.3	62°13'18"
FB-4.4	64°26'2"
FB-4.5	66°36'22"
FB-4.6	68°44'36"
FB-4.7	70°51'0"
FB-4.8	72°55'48"
Crosshead	74°34'38"
FB-4.9	76°37'5"
FB-4.10	78°38'31"
FB-4.11	80°39'6"
FB-4.12	82°39'0"
FB-4.13	84°38'21"
FB-4.14	86°29'23"

MEMBER SIZE

Girder	Size
G4.1-G4.7	54" I ^r Girder
G4.8	60" I ^r Girder
G4.9	W36x150
G4.10	W36x150
G4.10A	W36x150
G4.11	W36x231
G4.12	60" I ^r Girder
G4.13	W36x150
G4.14	W36x150
G4.15	W36x150
G4.16	W36x231
G4.17	W36x231
G4.18	W36x231
G4.19	54" I ^r Girder
G4.20	54" I ^r Girder
FB4.1- FB4.7	W36x231
FB4.8, FB4.9, FB4.12	54" I ^r Girder
FB4.10, FB4.11, FB4.13, FB4.14	W36x231

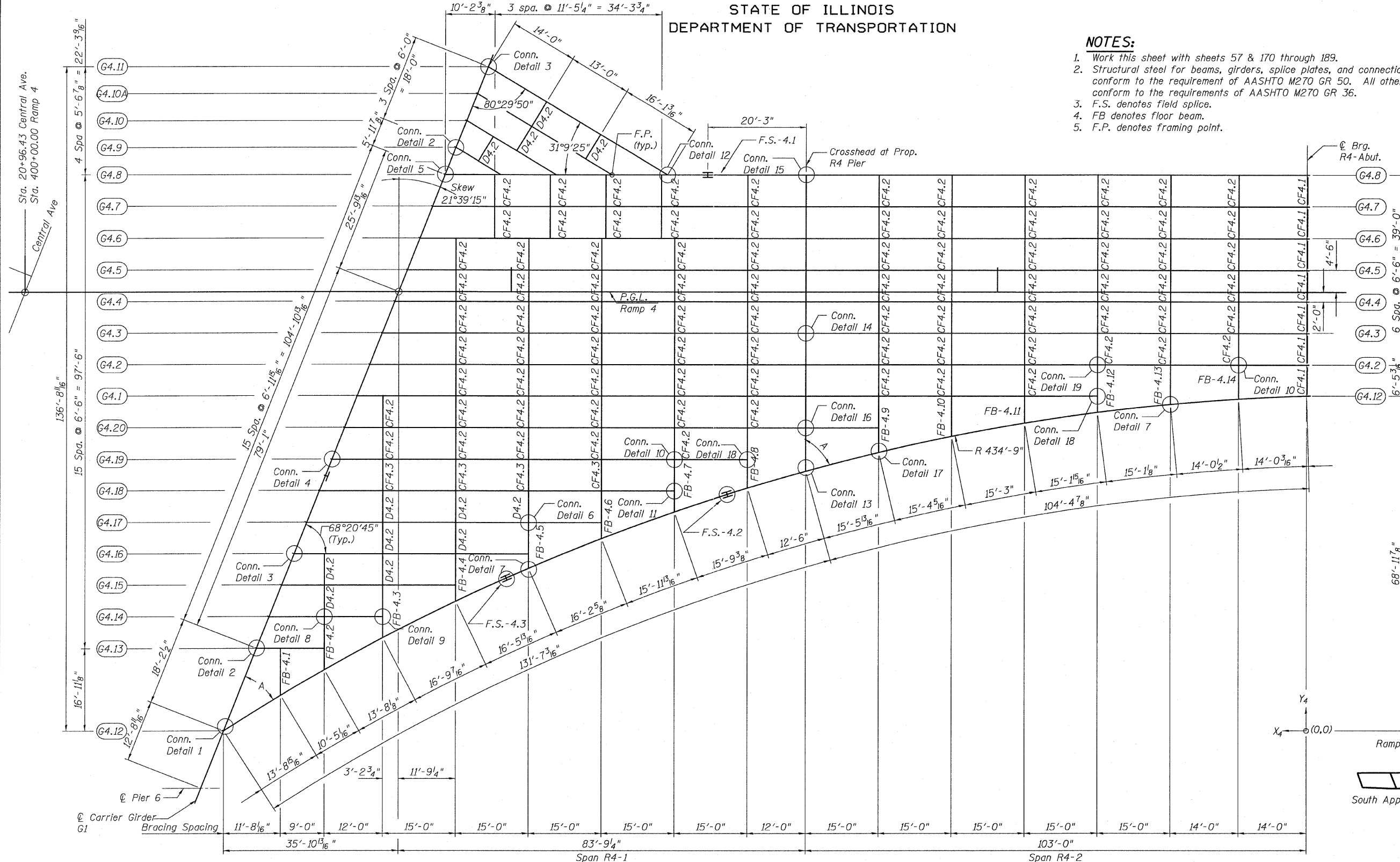


FRAMING PLAN
RAMP 4 FLARE
STRUCTURE NO. 016-0724

FRAMING PLAN - RAMP 4 FLARE

	Carrier Girder G22	F.S.-4.3	F.S.-4.2	Crosshead	Brg. R4-Abut.
X ₄	222'-8 ¹ / ₁₆ "	164'-6 ³ / ₁₆ "	119'-1 ⁵ / ₈ "	103'-0"	0'-0"
Y ₄	0'-0"	31'-5 ³ / ₈ "	48'-8 ³ / ₄ "	53'-6 ¹ / ₄ "	68'-11 ⁷ / ₈ "

Sta. 20+96.43 Central Ave.
Sta. 400+00.00 Ramp 4



TYLIN INTERNATIONAL

DESIGNED	PK	REVISIONS	
CHECKED	AMD, PDF	NAME	DATE
DRAWN	PK		
CHECKED	AMD, PDF		
DATE	03/25/2011		

SHEET NO. 97
239 SHEETS

F.A.I. RTE.	SECTION	COUNTY	TOTAL SHEETS	SHEET NO.
55	0711.2R & 1011.1BR	COOK	741	421
CONTRACT NO. 60999				
FED. ROAD DIST. NO. 1 ILLINOIS FED. AID PROJECT				

4/28/2011