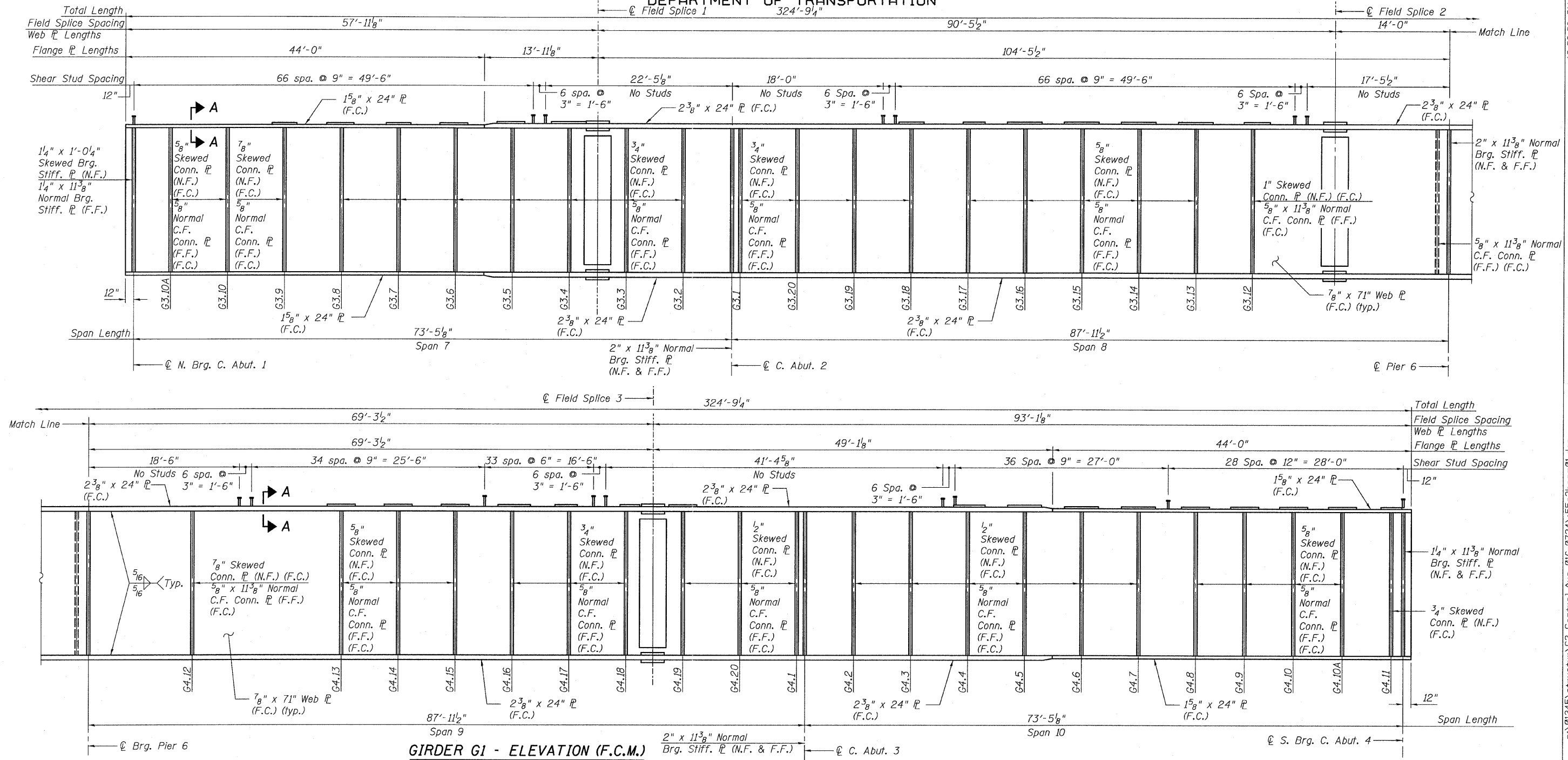


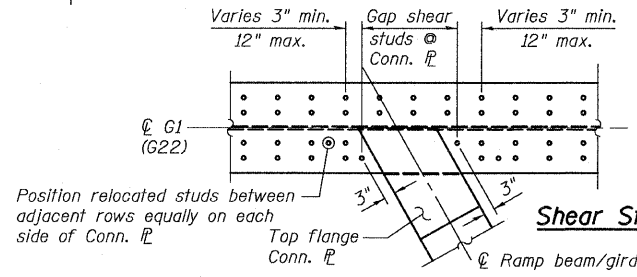
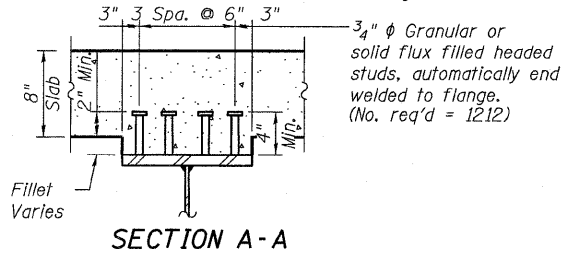
STATE OF ILLINOIS  
DEPARTMENT OF TRANSPORTATION



**GIRDER G1 - ELEVATION (F.C.M.)**  
(Looking West)

**NOTES:**

1. For Top of Web Elevations, see Sheet 93.
2. For Bearing stiffener and connection plate details see Sheet 107.
3. For Field Splice detail, see Sheet 106.
4. F.C.M. denotes Fracture Critical Member.
5. F.C. denotes Fracture Critical material, AASHTO Zone II.
6. N.F. denotes Near Face.
7. F.F. denotes Far Face.
8. Girder G1 shall not be cambered.



1. Relocate studs in order to clear Conn. P.
2. Locate last stud 3" from edge of Conn. P as shown.
3. Equally distribute relocated studs between adjacent rows on each side of Conn. P.

**GIRDER G1 - ELEVATION**  
**CENTRAL/I-55**  
**STRUCTURE NO. 016-0724**

<b>TYLIN INTERNATIONAL</b>	DESIGNED - JMA	REVISIONS		SHEET NO. 99	F.A.I RTE.	SECTION	COUNTY	TOTAL SHEETS	SHEET NO.			
	CHECKED - AMD,	NAME	DATE							741	423	
	DRAWN - JMA											CONTRACT NO. 60999
	CHECKED - AMD,											
DATE - 03/25/2011												

4/28/2011 12:03:08 PM p:\01345\structure\02 Central Ave. 016-0724\155c2beam01.dgn