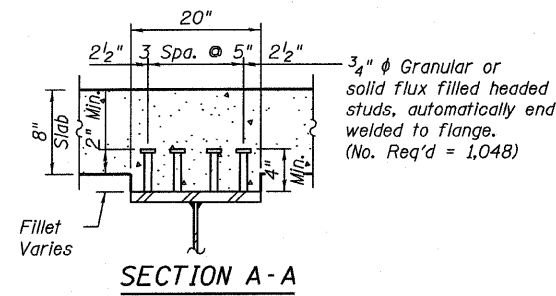
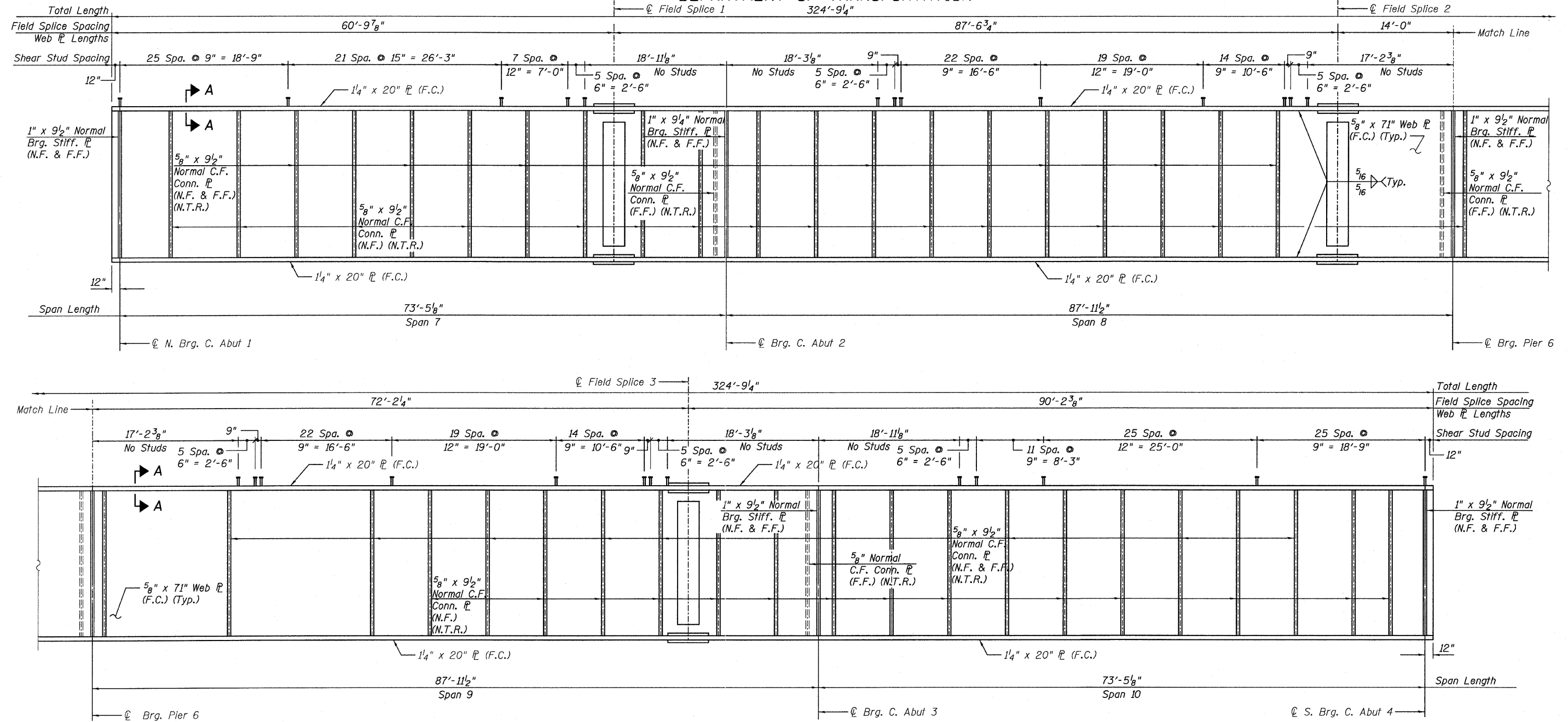


STATE OF ILLINOIS
DEPARTMENT OF TRANSPORTATION



GIRDER G2 - ELEVATION (F.C.M)
(Looking West)

- NOTES:**
- All Steel shown on this sheet shall be AASHTO M 270 GR 50.
 - For Top of Web Elevations, see Sheet 93.
 - For Bearing stiffener, and connection plate details, see Sheet 107.
 - For Field Splice detail, see Sheet 106.
 - F.C.M. denotes Fracture Critical Member
 - F.C. denotes Fracture Critical Material, AASHTO Zone II
 - N.F. denotes Near Face
 - F.F. denotes Far Face
 - Girder G2 shall not be cambered.
 - Load carrying components designated "NTR" shall conform to the supplemental requirements for Notch Toughness, Zone 2.

GIRDER G2 - ELEVATION
CENTRAL/I-55
STRUCTURE NO. 016-0724

TYLIN INTERNATIONAL	DESIGNED - JMA	REVISIONS		SHEET NO. 100	F.A.I. RTE.	SECTION	COUNTY	TOTAL SHEETS	SHEET NO.
	CHECKED - AMD,	NAME	DATE		55	0711.2R & 1011.1BR	COOK	741	424
	DRAWN - JMA				239 SHEETS	CONTRACT NO. 60999			
	CHECKED - AMD,				FED. ROAD DIST. NO. 1 ILLINOIS FED. AID PROJECT				
	DATE - 03/25/2011								

12:03:10 PM
D:\01345\structure\2 Central Ave. 016-0724\15c2beam02.dgn
4/28/2011