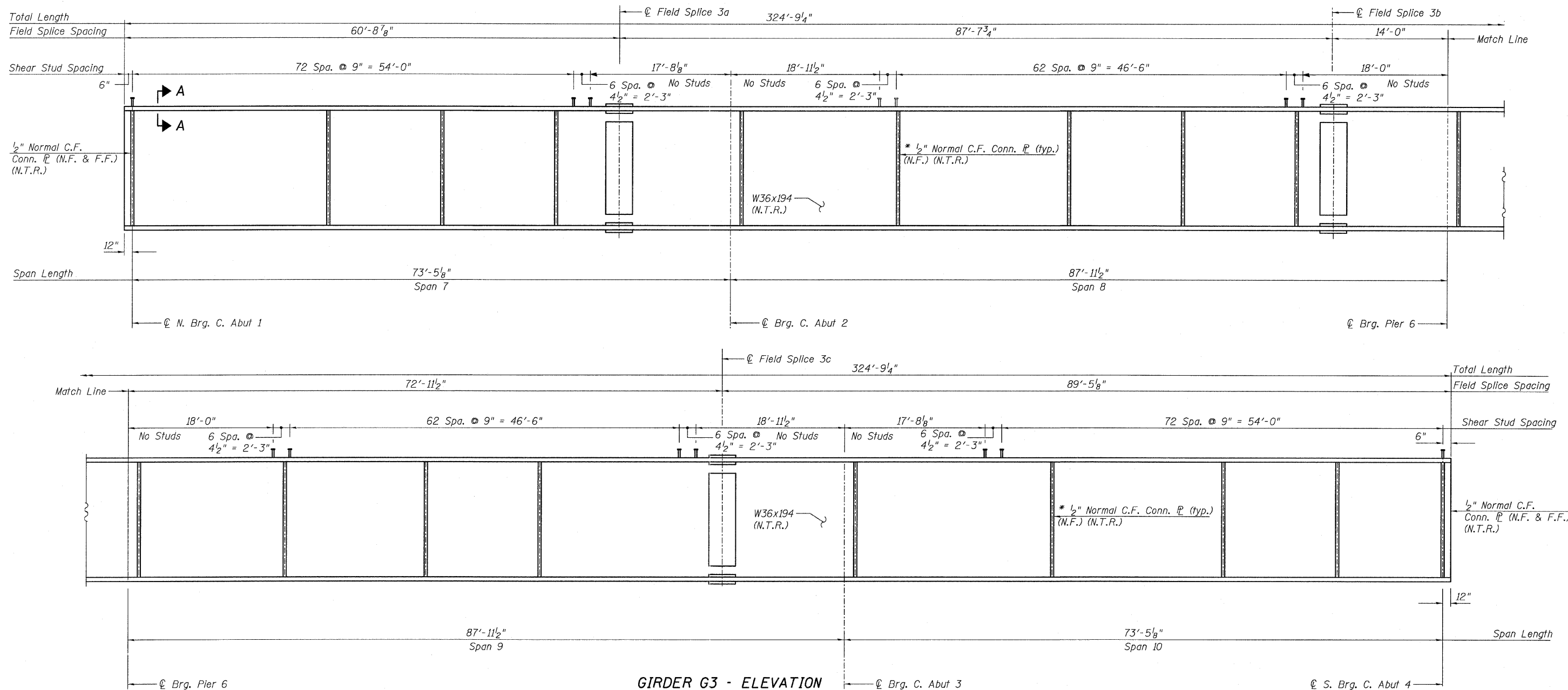


STATE OF ILLINOIS
DEPARTMENT OF TRANSPORTATION

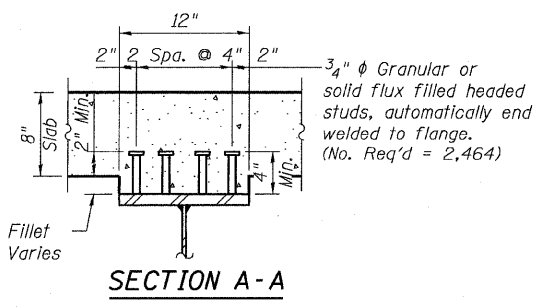


GIRDER G3 - ELEVATION
(Looking West)
(Girder G3 shown, Girder G20 similar)

* G20 C.F. Conn. P's on F.F. & opposite hand from G3.

NOTES:

- All steel on this sheet shall be AASHTO M 270 Grade 50.
- For Connection Plate details, see Sheet 106.
- For Field Splice detail, see Sheets 106 & 107.
- N.T.R. denotes Notch Toughness Requirements.
- N.F. denotes Near Face.
- F.F. denotes Far Face.



GIRDER G3/G20 - ELEVATION
CENTRAL/I-55
STRUCTURE NO. 016-0724

TYLIN INTERNATIONAL	DESIGNED - JMA	REVISIONS		SHEET NO. 101	F.A.I. RTE.	SECTION	COUNTY	TOTAL SHEETS	SHEET NO.
	CHECKED - AMD,	NAME	DATE		55	0711.2R & 1011.1BR	COOK	741	425
	DRAWN - JMA				239 SHEETS	CONTRACT NO. 60999			
	CHECKED - AMD,				FED. ROAD DIST. NO. 1 ILLINOIS FED. AID PROJECT				
	DATE - 03/25/2011								

p:\01345\structure\02_Central_Ave_016-0724\155c2beam03.dwg 4/28/2011 12:03:13 PM