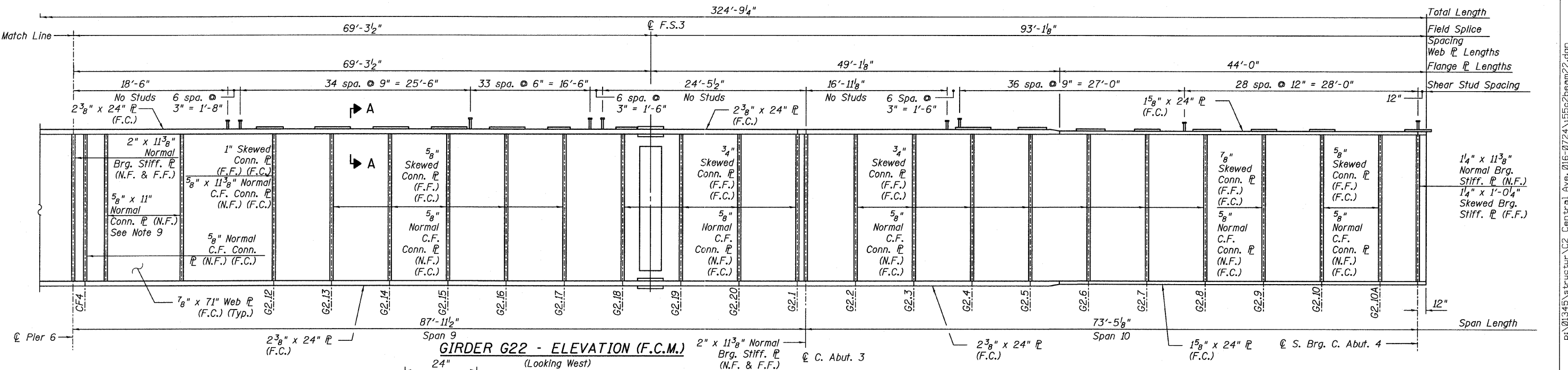
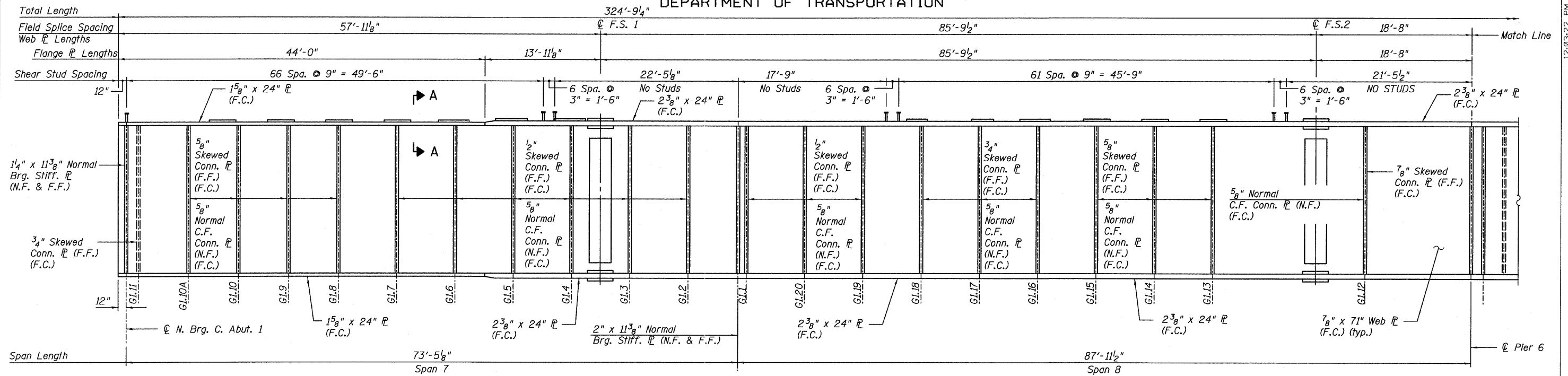
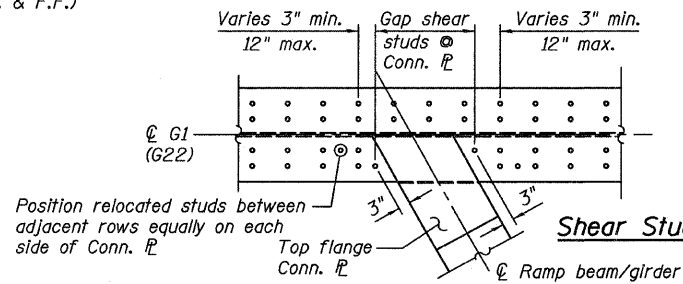
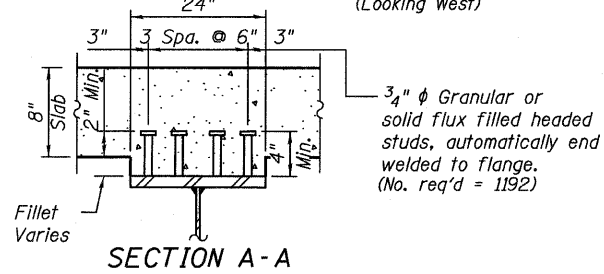


STATE OF ILLINOIS
DEPARTMENT OF TRANSPORTATION



NOTES:

- For Top of Web Elevations see Sheet 93.
- For Bearing stiffener and connection plate details see Sheet 107.
- For Field Splice detail, see Sheets 106.
- F.C.M. denotes Fracture Critical Member.
- F.C. denotes Fracture Critical Material, AASHTO Zone II.
- N.F. denotes Near Face.
- F.F. denotes Far Face.
- Girder G22 shall not be cambered.
- For bracket details, see Sheet 109.



- Relocate studs in order to clear Conn. P.
- Locate last stud 3\"/>
- Equally distribute relocated studs between adjacent rows on each side of Conn. P.

**GIRDER G22 - ELEVATION
CENTRAL/1-55
STRUCTURE NO. 016-0724**

TYLIN INTERNATIONAL	DESIGNED - JMA	REVISIONS		SHEET NO. 105	F.A.I. RTE.	SECTION	COUNTY	TOTAL SHEETS	SHEET NO.	
	CHECKED - AMD,	NAME	DATE		239 SHEETS	55	0711.2R & 1011.1BR	COOK	741	429
	DRAWN - JMA				CONTRACT NO. 60999					
	CHECKED - AMD,				FED. ROAD DIST. NO. 1 ILLINOIS FED. AID PROJECT					
	DATE - 03/25/2011									