

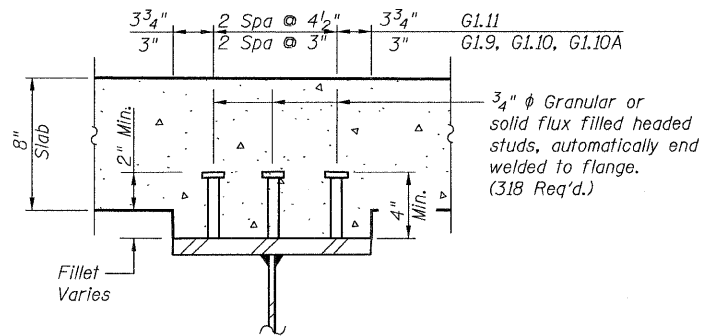
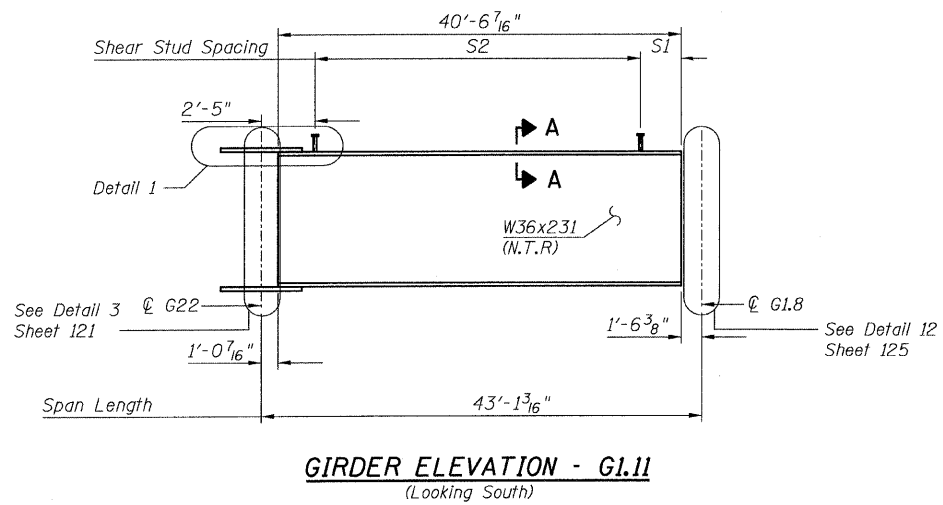
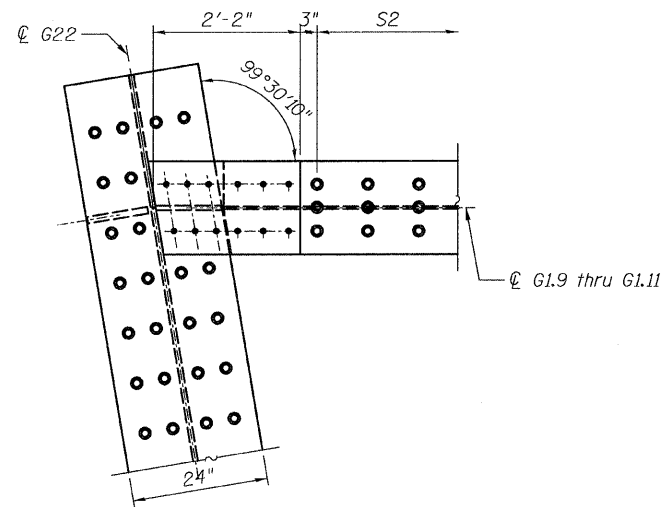
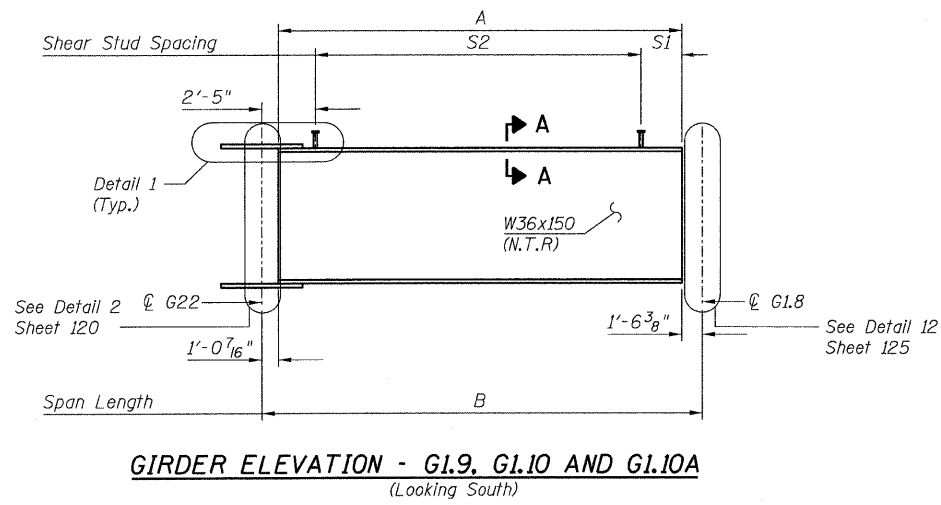
STATE OF ILLINOIS  
DEPARTMENT OF TRANSPORTATION

GIRDER DIMENSIONS

Girder	A	B
G1.9	8'-2 <sup>5</sup> / <sub>16</sub> "	10'-9 <sup>1</sup> / <sub>8</sub> "
G1.10	18'-11 <sup>1</sup> / <sub>16</sub> "	21'-6 <sup>1</sup> / <sub>2</sub> "
G1.10A	29'-9"	32'-3 <sup>5</sup> / <sub>16</sub> "

SHEAR STUD SPACING

Girder	S1	S2
G1.9	9 <sup>3</sup> / <sub>4</sub> "	3 Spa. @ 24" = 6'-0"
G1.10	1'-7 <sup>1</sup> / <sub>8</sub> "	8 Spa. @ 24" = 16'-0"
G1.10A	4 <sup>1</sup> / <sub>16</sub> "	14 Spa. @ 24" = 28'-0"
G1.11	7 <sup>1</sup> / <sub>8</sub> "	77 Spa. @ 6" = 38'-6"



NOTES:

- All steel shown on this sheet shall conform to the requirements of AASHTO M270 GR 50.
- Load carrying components designated "NTR" shall conform to the supplemental requirements for Notch Toughness, Zone 2.
- N.F. - denotes Near Face.

**GIRDER ELEVATIONS 3**  
**RAMP 1 FLARE**  
**S.N. 016-0724**

<b>TYLIN INTERNATIONAL</b>	DESIGNED - EKH, JMA, PK	REVISIONS		SHEET NO. 114	F.A.I. RTE. 55	SECTION 0711.2R & 1011.1BR	COUNTY COOK	TOTAL SHEETS 741	SHEET NO. 438
	CHECKED - AMD,	NAME	DATE						
	DRAWN - EKH, JMA, PK								
	CHECKED - AMD,								
DATE - 03/25/2011				239 SHEETS	CONTRACT NO. 60999				
					FED. ROAD DIST. NO. 1 ILLINOIS FED. AID PROJECT				

pi:\01345\structure\2.central\_ave\_016-0724\1551fr.amedt15.dgn 5/10/2011 4:25:21 PM