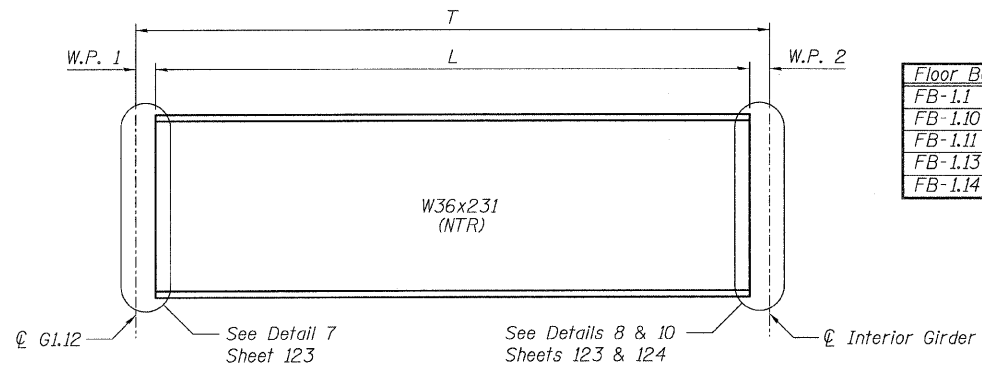
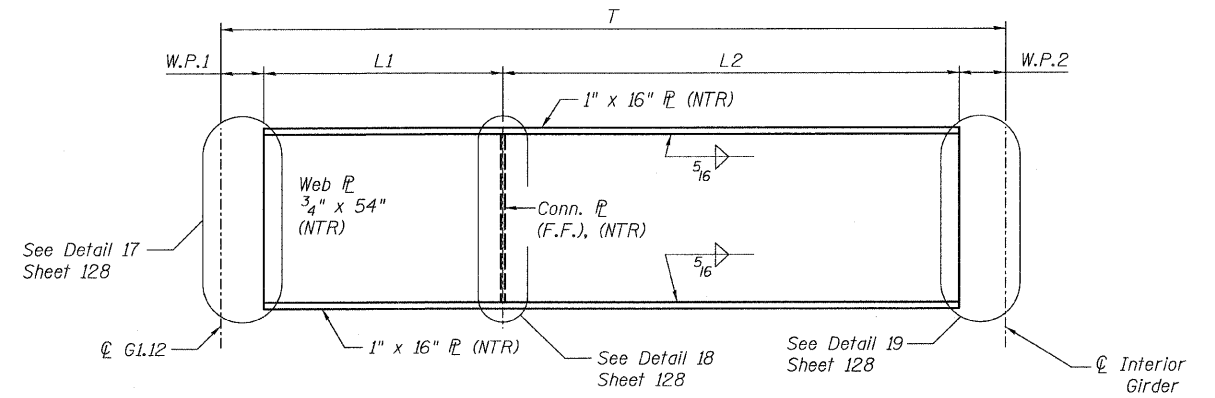


STATE OF ILLINOIS  
DEPARTMENT OF TRANSPORTATION

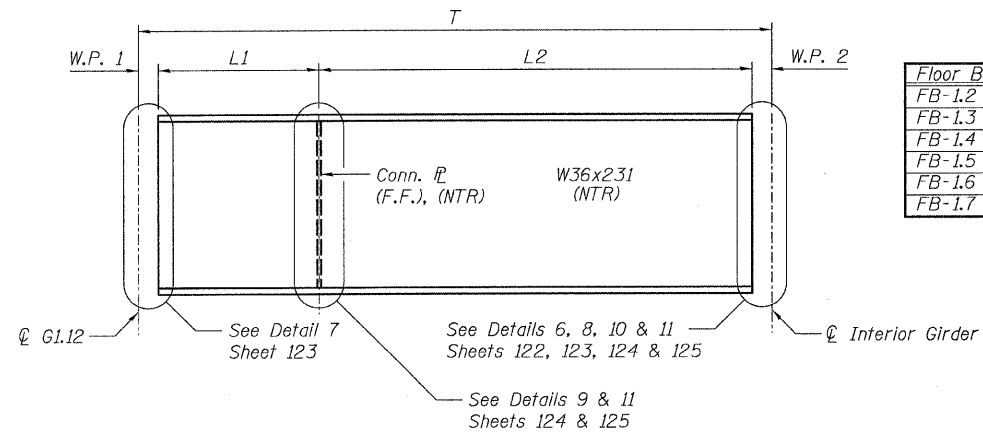


Floor Beam	W.P. 1	W.P. 2	L	T
FB-1.1	1'-2 <sup>5</sup> / <sub>16</sub> "	6 <sup>1</sup> / <sub>4</sub> "	7'-11 <sup>7</sup> / <sub>16</sub> "	9'-8"
FB-1.10	1'-0 <sup>1</sup> / <sub>2</sub> "	8 <sup>1</sup> / <sub>4</sub> "	6'-6 <sup>1</sup> / <sub>16</sub> "	8'-3 <sup>3</sup> / <sub>16</sub> "
FB-1.11	1'-0 <sup>1</sup> / <sub>16</sub> "	8 <sup>1</sup> / <sub>4</sub> "	3'-9 <sup>5</sup> / <sub>8</sub> "	5'-6 <sup>5</sup> / <sub>16</sub> "
FB-1.13	1'-0 <sup>1</sup> / <sub>16</sub> "	8 <sup>1</sup> / <sub>4</sub> "	6'-5 <sup>5</sup> / <sub>16</sub> "	8'-1 <sup>7</sup> / <sub>8</sub> "
FB-1.14	1'-0 <sup>1</sup> / <sub>4</sub> "	8 <sup>1</sup> / <sub>4</sub> "	5'-4 <sup>5</sup> / <sub>16</sub> "	7'-0 <sup>3</sup> / <sub>16</sub> "

**FLOOR BEAM ELEVATION**  
(FB-1.1, FB-1.10, FB-1.11, FB-1.13, FB-1.14)



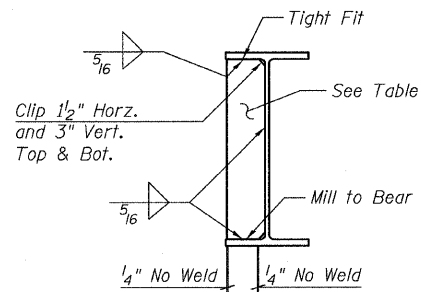
**FLOOR BEAM ELEVATION**  
(FB-1.8, FB-1.9, FB-1.12)  
(Looking East)



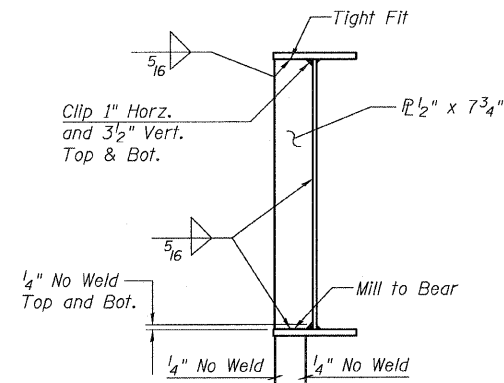
Floor Beam	W.P. 1	W.P. 2	L1	L2	T	Conn. P
FB-1.2	1'-2 <sup>1</sup> / <sub>16</sub> "	6 <sup>1</sup> / <sub>4</sub> "	3'-2 <sup>5</sup> / <sub>16</sub> "	5'-11 <sup>3</sup> / <sub>4</sub> "	10'-11"	5 <sup>8</sup> / <sub>16</sub> " x 7 <sup>3</sup> / <sub>4</sub> "
FB-1.3	1'-1 <sup>9</sup> / <sub>16</sub> "	6 <sup>1</sup> / <sub>4</sub> "	3'-2 <sup>3</sup> / <sub>8</sub> "	5'-11 <sup>3</sup> / <sub>4</sub> "	10'-10 <sup>1</sup> / <sub>4</sub> "	5 <sup>8</sup> / <sub>16</sub> " x 7 <sup>3</sup> / <sub>4</sub> "
FB-1.4	1'-1 <sup>9</sup> / <sub>16</sub> "	8 <sup>1</sup> / <sub>2</sub> "	2'-2 <sup>1</sup> / <sub>4</sub> "	5'-9 <sup>1</sup> / <sub>2</sub> "	9'-9 <sup>13</sup> / <sub>16</sub> "	5 <sup>8</sup> / <sub>16</sub> " x 7 <sup>3</sup> / <sub>4</sub> "
FB-1.5	1'-1 <sup>3</sup> / <sub>8</sub> "	8 <sup>1</sup> / <sub>2</sub> "	1'-10 <sup>1</sup> / <sub>2</sub> "	5'-9 <sup>1</sup> / <sub>2</sub> "	9'-5 <sup>1</sup> / <sub>8</sub> "	5 <sup>8</sup> / <sub>16</sub> " x 7 <sup>3</sup> / <sub>4</sub> "
FB-1.6	1'-1 <sup>9</sup> / <sub>16</sub> "	8 <sup>1</sup> / <sub>2</sub> "	2'-2 <sup>5</sup> / <sub>16</sub> "	5'-9 <sup>1</sup> / <sub>2</sub> "	9'-9 <sup>13</sup> / <sub>16</sub> "	5 <sup>8</sup> / <sub>16</sub> " x 7 <sup>3</sup> / <sub>4</sub> "
FB-1.7	1'-1"	8 <sup>1</sup> / <sub>4</sub> "	3'-2 <sup>1</sup> / <sub>16</sub> "	5'-9 <sup>3</sup> / <sub>4</sub> "	10'-9 <sup>1</sup> / <sub>16</sub> "	5 <sup>8</sup> / <sub>16</sub> " x 7 <sup>3</sup> / <sub>4</sub> "

Floor Beam	W.P. 1	W.P. 2	L1	L2	T
FB-1.8	1'-0 <sup>13</sup> / <sub>16</sub> "	8 <sup>1</sup> / <sub>4</sub> "	4'-10"	5'-9 <sup>3</sup> / <sub>4</sub> "	12'-4 <sup>13</sup> / <sub>16</sub> "
FB-1.9	1'-0 <sup>9</sup> / <sub>16</sub> "	8 <sup>1</sup> / <sub>4</sub> "	4'-0 <sup>1</sup> / <sub>16</sub> "	5'-9 <sup>3</sup> / <sub>4</sub> "	11'-6 <sup>5</sup> / <sub>8</sub> "
FB-1.12	1'-0 <sup>3</sup> / <sub>8</sub> "	8 <sup>1</sup> / <sub>4</sub> "	2'-3 <sup>1</sup> / <sub>2</sub> "	5'-9 <sup>3</sup> / <sub>4</sub> "	9'-9 <sup>1</sup> / <sub>8</sub> "

**FLOOR BEAM ELEVATION**  
(FB-1.2 thru FB-1.7)  
(Looking East)



**CONN. P DETAILS**  
(FB-1.2 to FB-1.7)



**CONN. P DETAILS**  
(FB-1.8, FB-1.9, FB-1.12)

**NOTES:**

- All steel shown on this sheet shall conform to the requirements of AASHTO M270 GR 50.
- Load carrying components designated "NTR" shall conform to the supplemental requirements for Notch Toughness, Zone 2.
- F.F. denotes Far Face.

**FLOOR BEAM DETAILS**  
**RAMP 1 FLARE**  
**STRUCTURE NO. 016-0724**

<b>TYLIN INTERNATIONAL</b>	DESIGNED - EKH, JMA	REVISIONS		SHEET NO. 119	F.A.I. RTE.	SECTION	COUNTY	TOTAL SHEETS	SHEET NO.					
	CHECKED - AMD,	NAME	DATE							55	0711.2R & 1011.1BR	COOK	741	443
	DRAWN - EKH, JMA									CONTRACT NO. 60999				
	CHECKED - AMD,									FED. ROAD DIST. NO. 1 ILLINOIS FED. AID PROJECT				
	DATE - 03/25/2011			239 SHEETS										