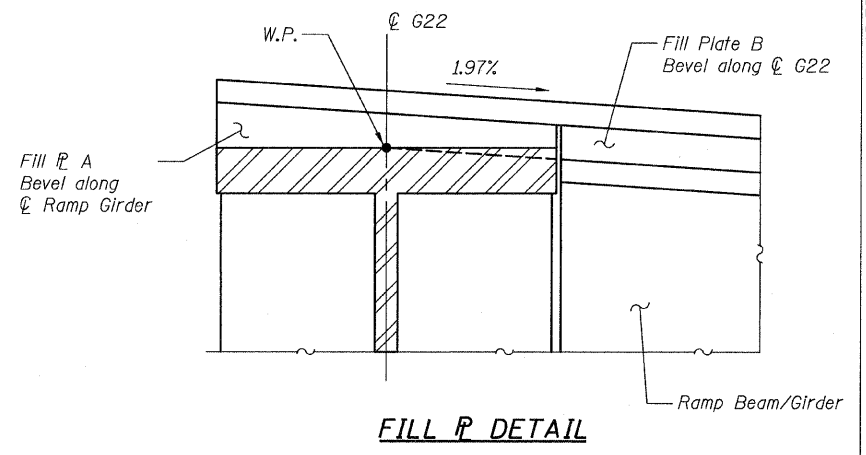
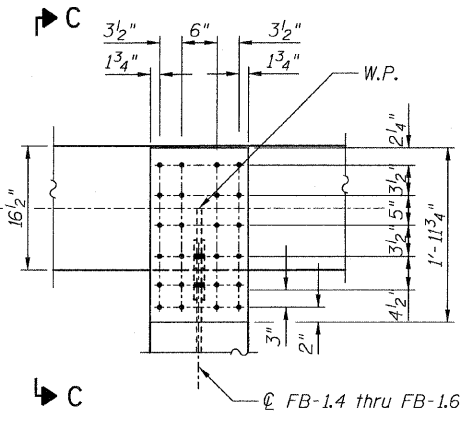
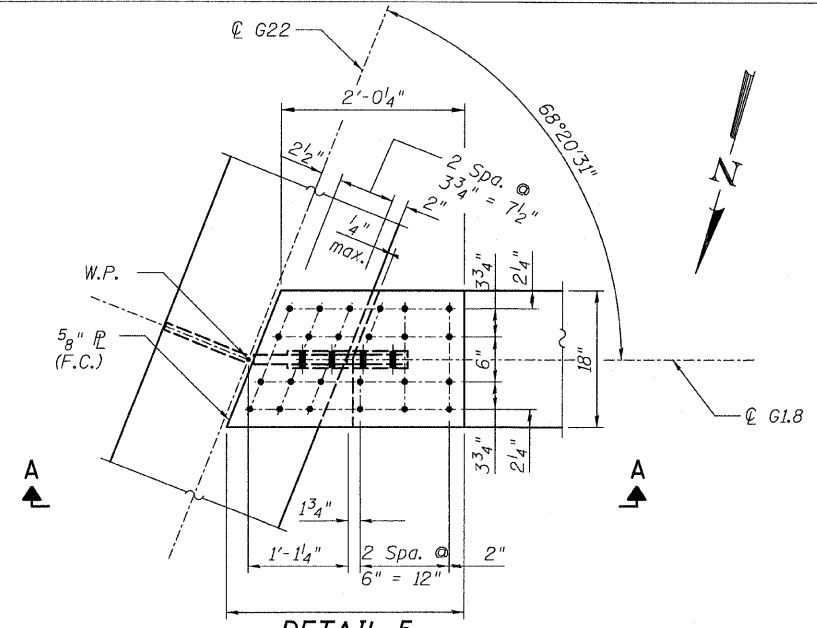


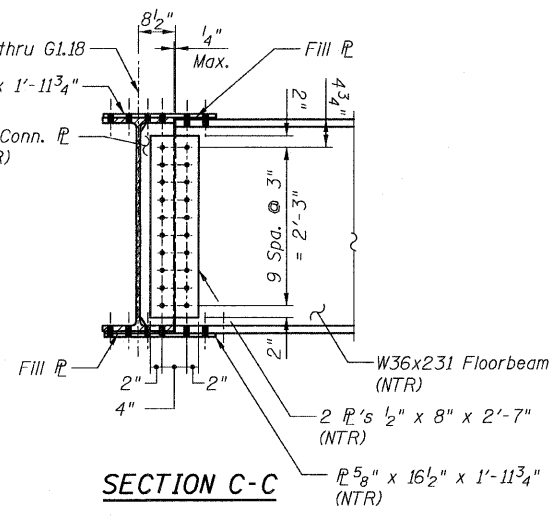
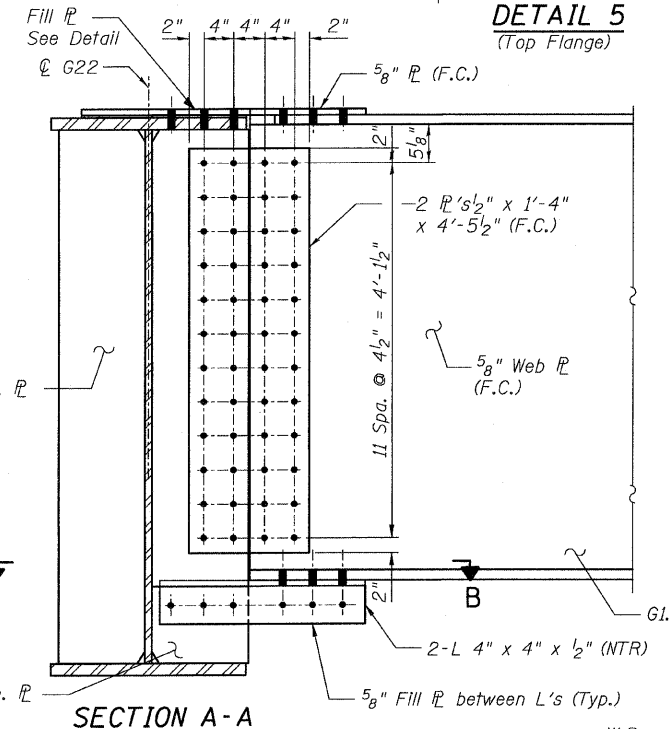
STATE OF ILLINOIS  
DEPARTMENT OF TRANSPORTATION



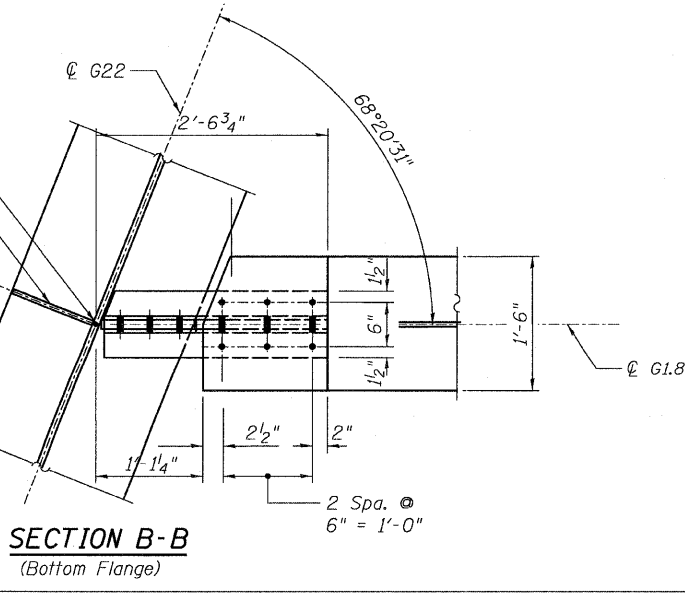
**FILL P DETAIL**

**DETAIL 5**  
(Top Flange)

**DETAIL 6**  
(Top Flange)  
(Bot. Flange Similar)



**SECTION C-C**



**SECTION B-B**  
(Bottom Flange)

**NOTES:**

- All steel shall be AASHTO M270 Grade 50.
- For Details 5 and 6 locations, see Sheet 94.
- F.C. - denotes Fracture Critical Material, AASHTO Zone II.
- Load carrying components designated "NTR" shall conform to the Supplemental Requirements for Notch Toughness, Zone 2.

**CONNECTION DETAILS 5&6**  
**RAMP 1 FLARE**  
**STRUCTURE NO. 016-0724**

**TYLIN INTERNATIONAL**

DESIGNED - EKH, JMA	REVISIONS	
CHECKED - AMD,	NAME	DATE
DRAWN - EKH, JMA		
CHECKED - AMD,		
DATE - 03/25/2011		

SHEET NO. 122  
239 SHEETS

F.A.I. RTE.	SECTION	COUNTY	TOTAL SHEETS	SHEET NO.
55	0711.2R & 1011.1BR	COOK	741	446
CONTRACT NO. 60999				
FED. ROAD DIST. NO. 1 ILLINOIS FED. AID PROJECT				

12:52:53 PM  
p:\01345\structure\02\_Central\_Ave\_016-0724\15511 Framed\113.dgn