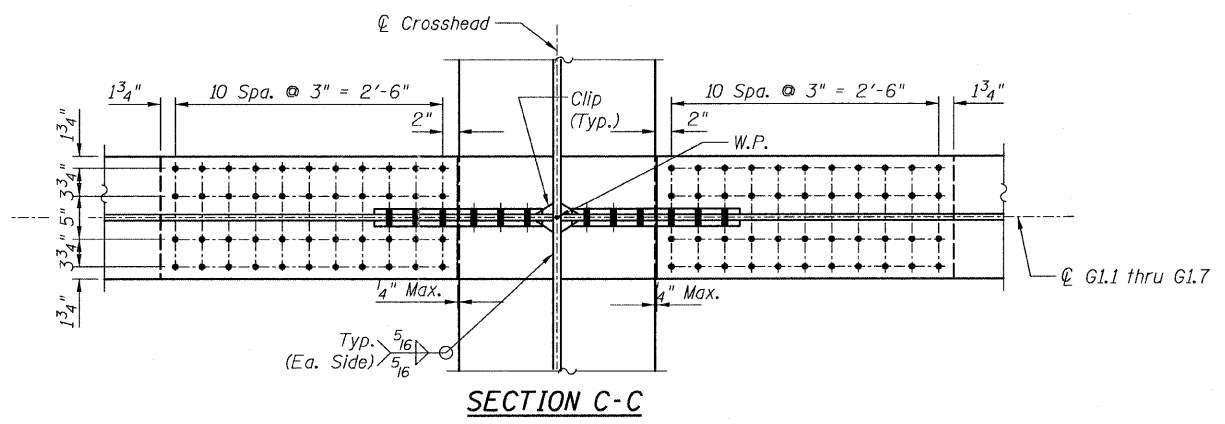
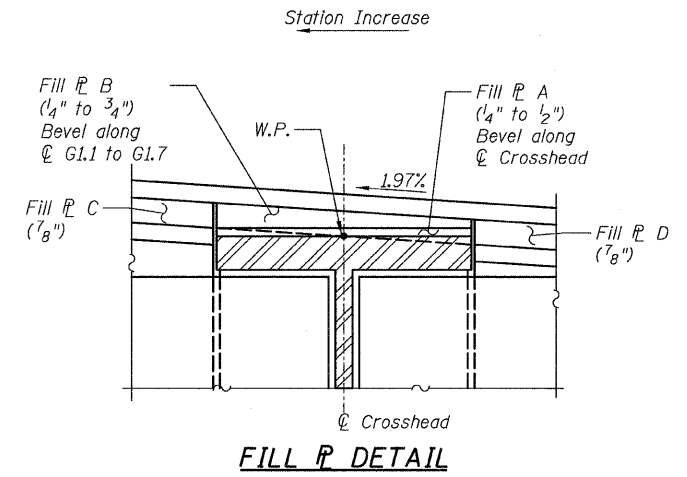
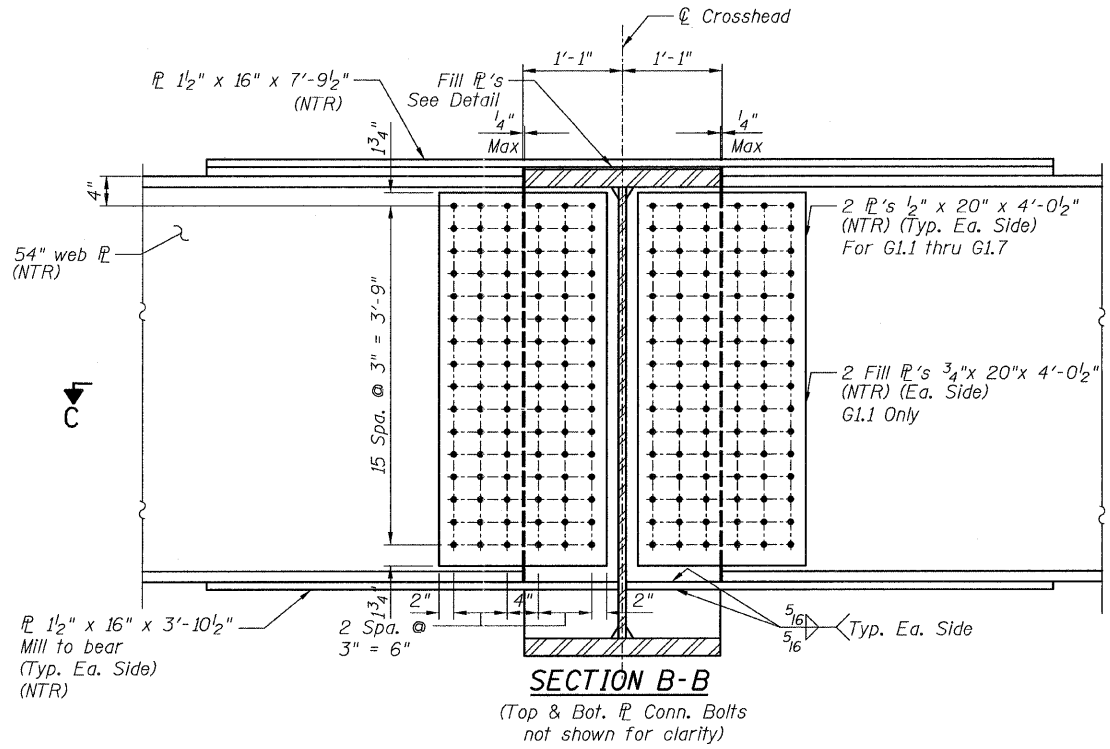
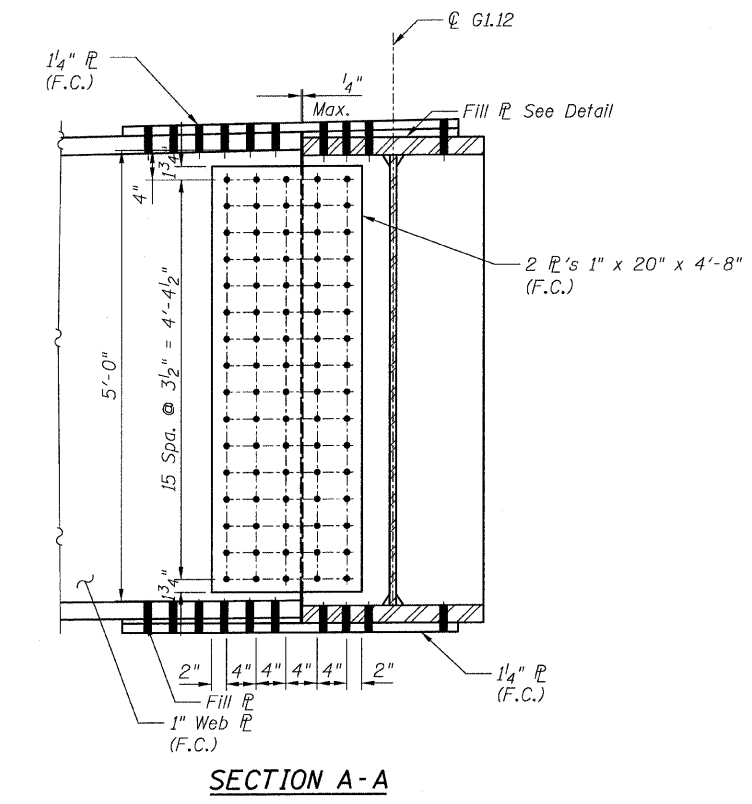
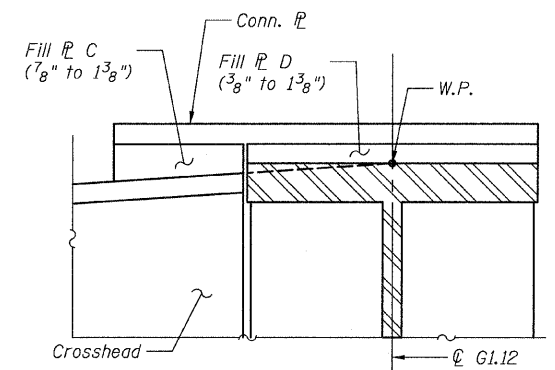
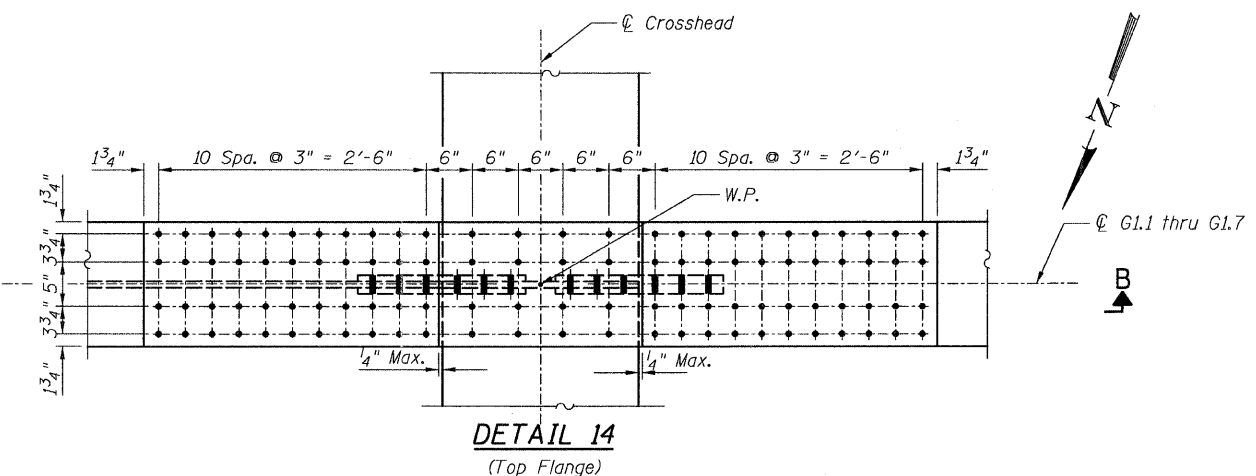
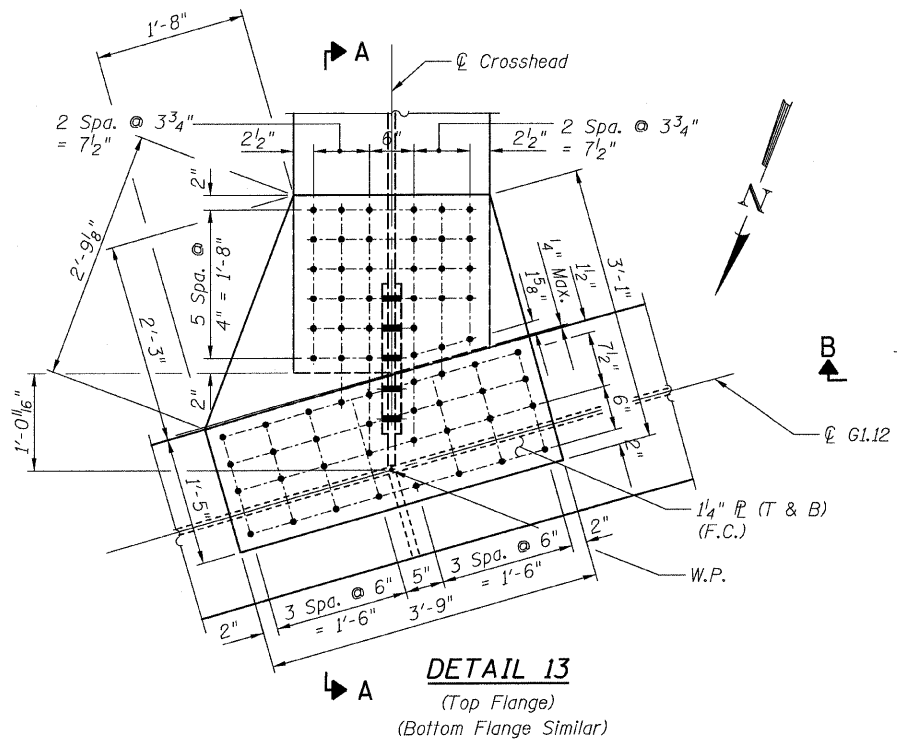


STATE OF ILLINOIS
DEPARTMENT OF TRANSPORTATION



- NOTES:**
- All steel shall be AASHTO M270 Grade 50.
 - For Details 13 and 14 locations, see Sheet 94.
 - F.C. - denotes Fracture Critical Material, AASHTO Zone II.
 - Load carrying components designated "NTR" shall conform to the Supplemental Requirements for Notch Toughness, Zone 2.

**CONNECTION DETAILS 13&14
RAMP 1 FLARE
STRUCTURE NO. 016-0724**

| | | | | | | | | | | |
|----------------------------|---------------------|-----------|------|---------------|---|---------|--------------------|--------------|-----------|-----|
| TYLIN INTERNATIONAL | DESIGNED - EKH, JMA | REVISIONS | | SHEET NO. 126 | F.A.I. RTE. | SECTION | COUNTY | TOTAL SHEETS | SHEET NO. | |
| | CHECKED - AMD, | NAME | DATE | | 239 SHEETS | 55 | 0711.2R & 1011.1BR | COOK | 741 | 450 |
| | DRAWN - EKH, JMA | | | | CONTRACT NO. 60999 | | | | | |
| | CHECKED - AMD, | | | | FED. ROAD DIST. NO. 1 ILLINOIS FED. AID PROJECT | | | | | |
| | DATE - 03/25/2011 | | | | | | | | | |

pi:\01345\structure\02_Central_Ave_016-0724\5551frame117.dwg 5/9/2011 9:09:06 AM