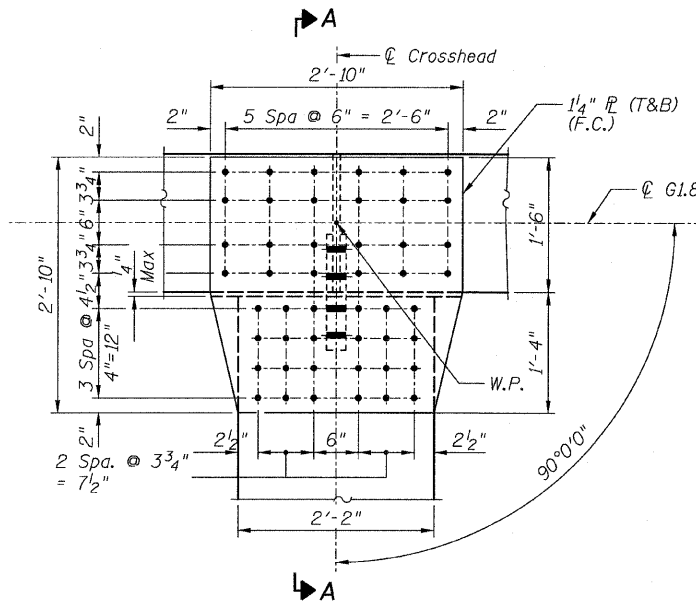
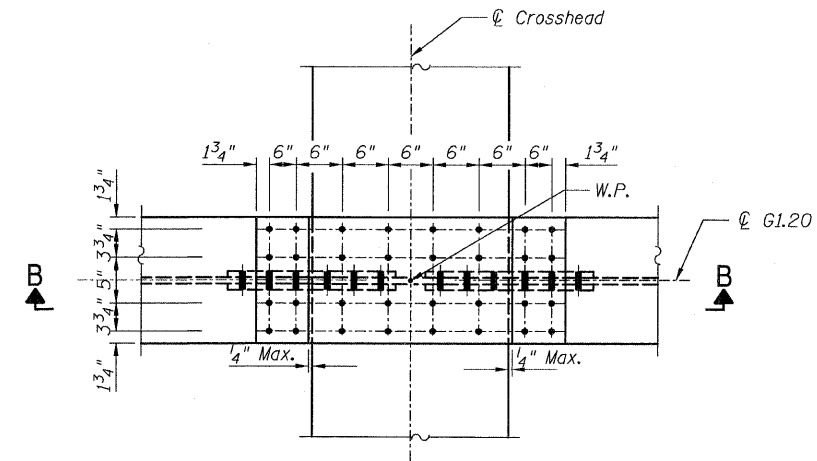


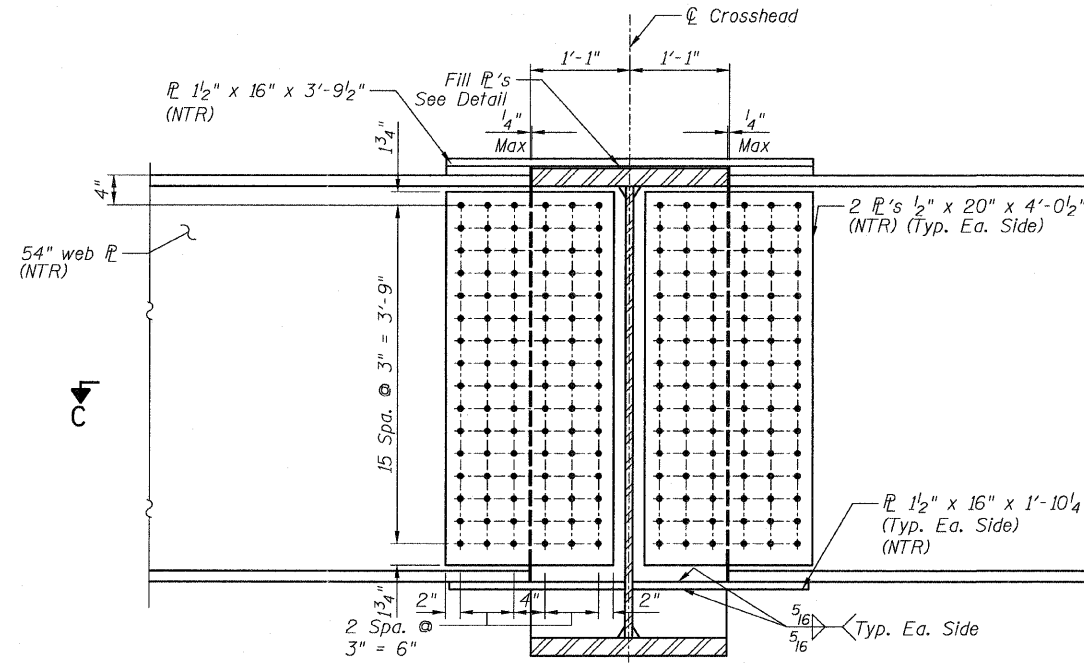
STATE OF ILLINOIS  
DEPARTMENT OF TRANSPORTATION



**DETAIL 15**  
(Top Flange)  
(Bot. Flange Similar)

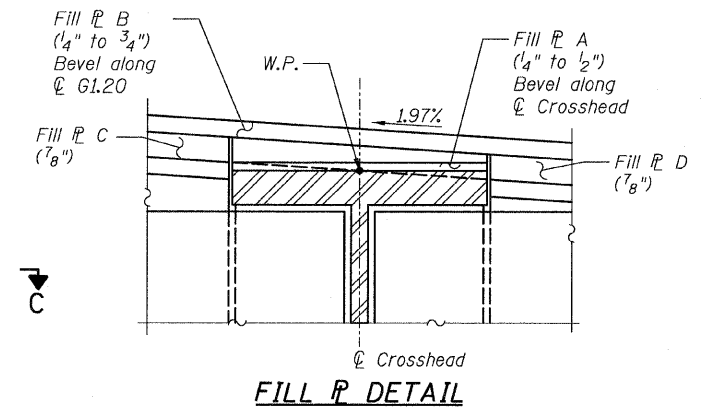


**DETAIL 16**  
(Top Flange)



**SECTION B-B**

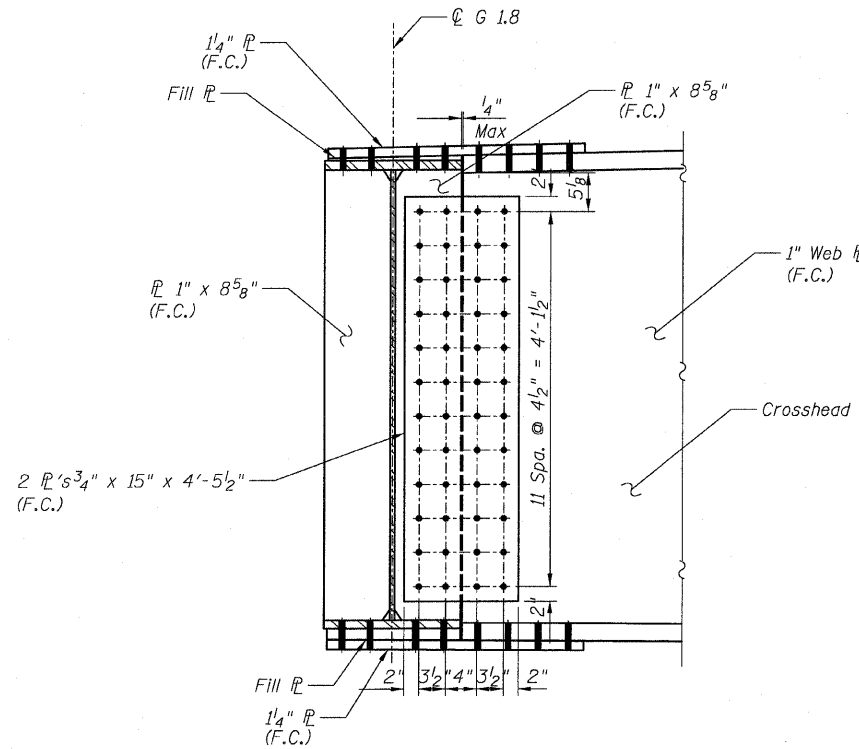
(Top & bottom connection bolts not shown for clarity)



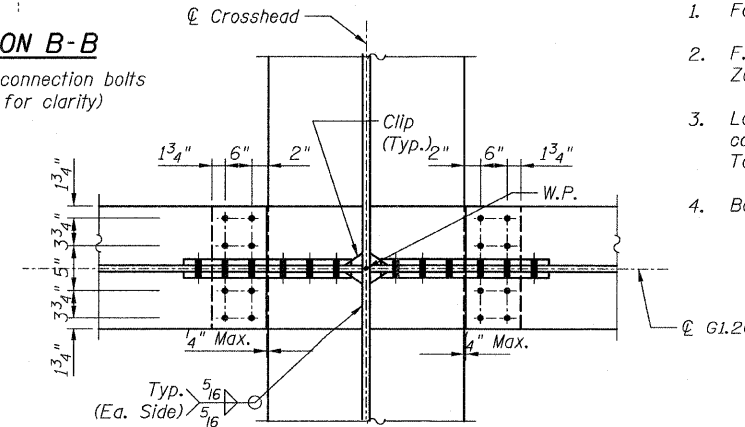
**FILL R DETAIL**

**NOTES:**

1. For Details 15 and 16 locations, see Sheet 94.
2. F.C. - denotes Fracture Critical Material, AASHTO Zone II.
3. Load carrying components designated "NTR" shall conform to the Supplemental Requirements for Notch Toughness, Zone 2.
4. Bolts for connection detail 15 shall be 1"  $\phi$  with 1/16" holes.



**SECTION A-A**



**SECTION C-C**

**CONNECTION DETAILS 15&16**  
**RAMP 1 FLARE**  
**STRUCTURE NO. 016-0724**

**TYLIN INTERNATIONAL**

DESIGNED	EKH, JMA	REVISIONS	
CHECKED	AMD,	NAME	DATE
DRAWN	EKH, JMA		
CHECKED	AMD,		
DATE	03/25/2011		

SHEET NO. 127	F.A.I. RTE.	SECTION	COUNTY	TOTAL SHEETS	SHEET NO.
239 SHEETS	55	0711.2R & 1011.1BR	COOK	741	451
			CONTRACT NO. 60999		
FED. ROAD DIST. NO. 1 ILLINOIS FED. AID PROJECT					