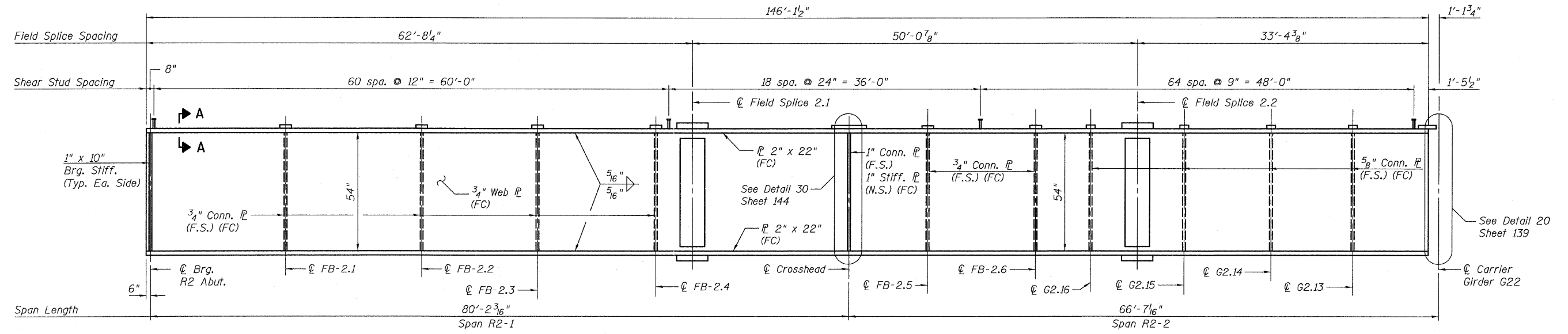
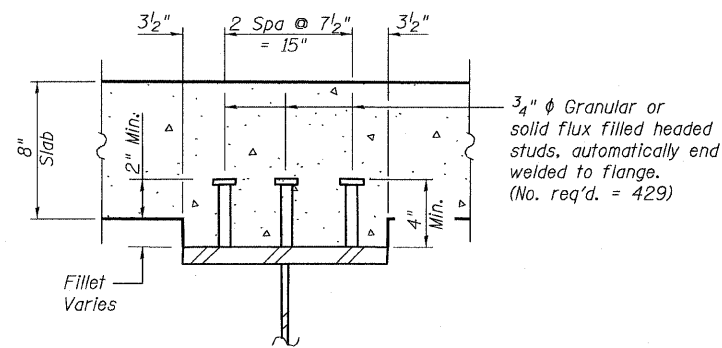


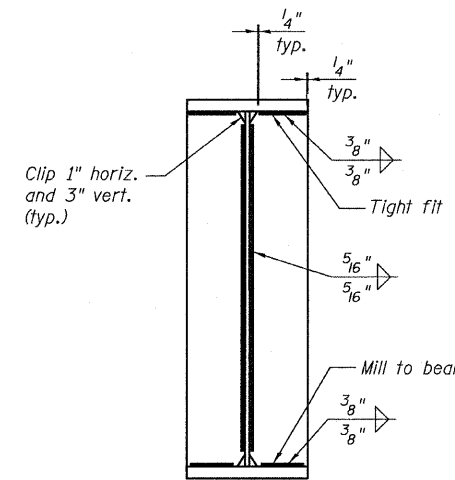
STATE OF ILLINOIS
DEPARTMENT OF TRANSPORTATION



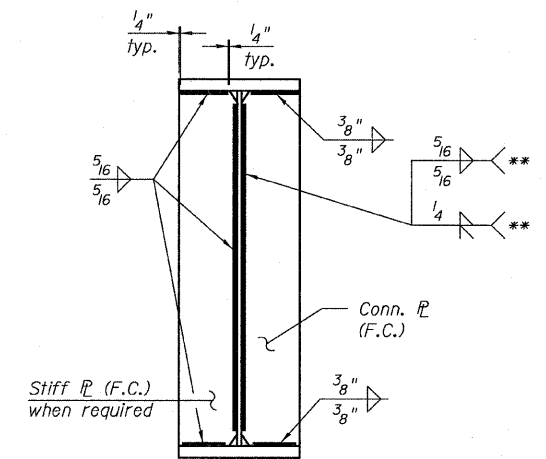
GIRDER ELEVATION - G2.12
(Looking North)
(F.C.M.)



SECTION A-A



BEARING STIFFENER



** Weld type based on angle between web and connection plate where angles warrant combination of fillet and groove welds. Fillet weld is acute angle and groove weld is obtuse angle.

**TYPICAL CONNECTION
PLATE DETAIL**

NOTES:

- All steel shown on this sheet shall conform to the requirements of AASHTO M270 GR 50.
- F.C. denotes Fracture Critical Material, AASHTO Zone II.
- For Field Splice details, See Sheet 148.
- F.S. denotes far side.
- N.S. denotes near side.

**GIRDER ELEVATIONS 3
RAMP 2 FLARE
STRUCTURE NO. 016-0724**

TYLIN INTERNATIONAL	DESIGNED - JPN	REVISIONS		SHEET NO. 135	F.A.I. RTE.	SECTION	COUNTY	TOTAL SHEETS	SHEET NO.	
	CHECKED - AMD,	NAME	DATE		55	0711.2R & 1011.1BR	COOK	741	459	
	DRAWN - MAU				239 SHEETS	CONTRACT NO. 60999				
	CHECKED - AMD,				FED. ROAD DIST. NO. 1 ILLINOIS FED. AID PROJECT					
	DATE - 03/25/2011									

P:\01345\Structure\2 Central Ave. 016-0724\15512\Framed15.dwg 2/28/07 PM 4/29/2011 3:28:07 PM