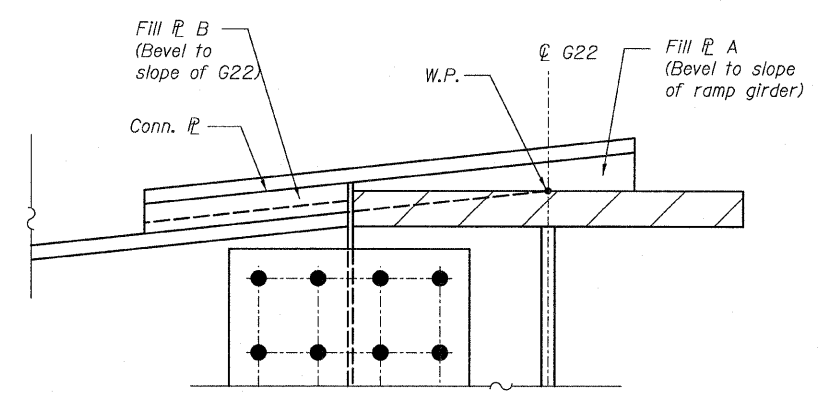
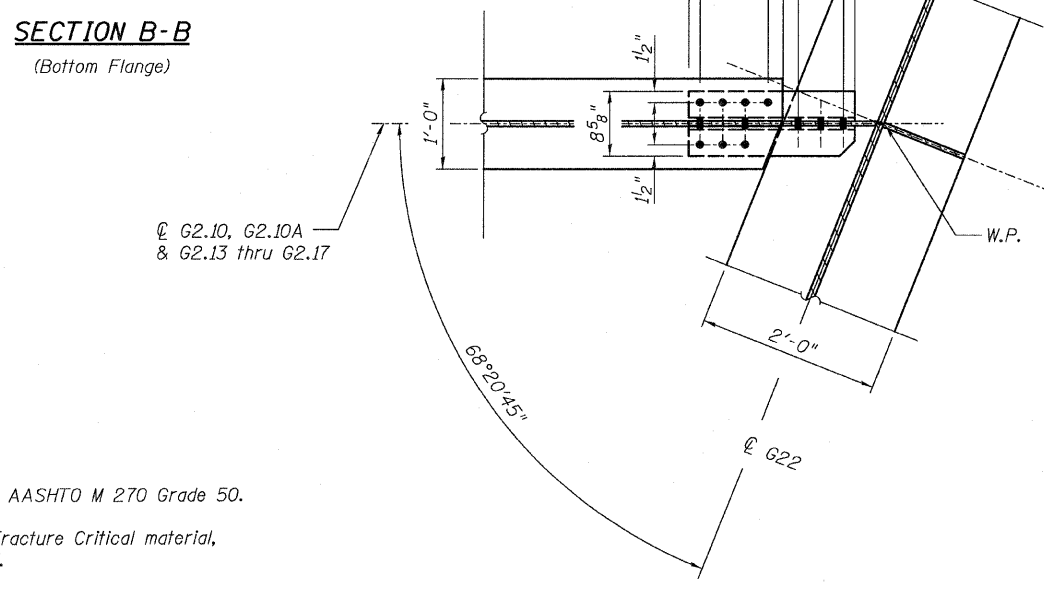
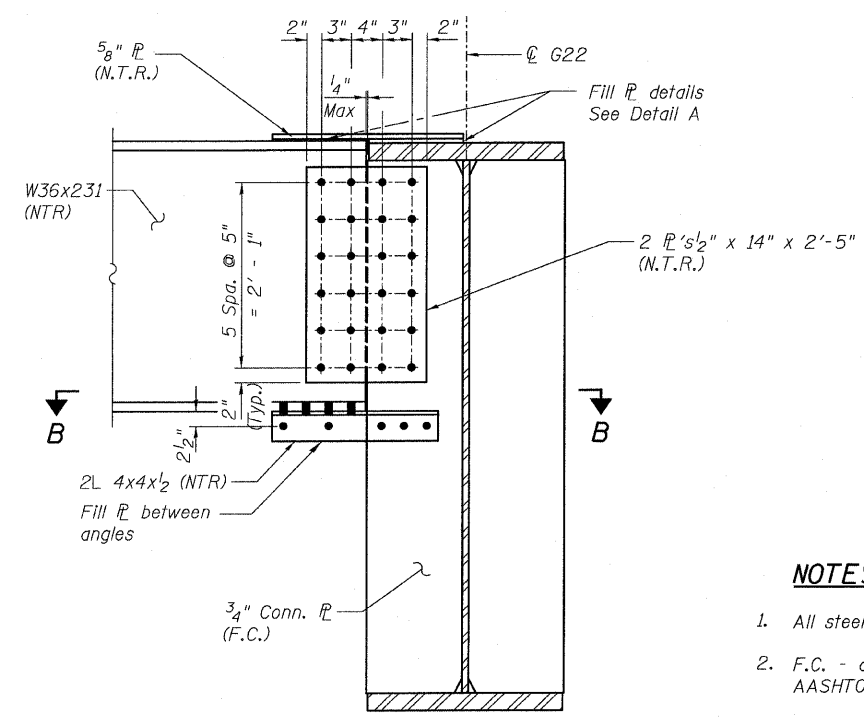
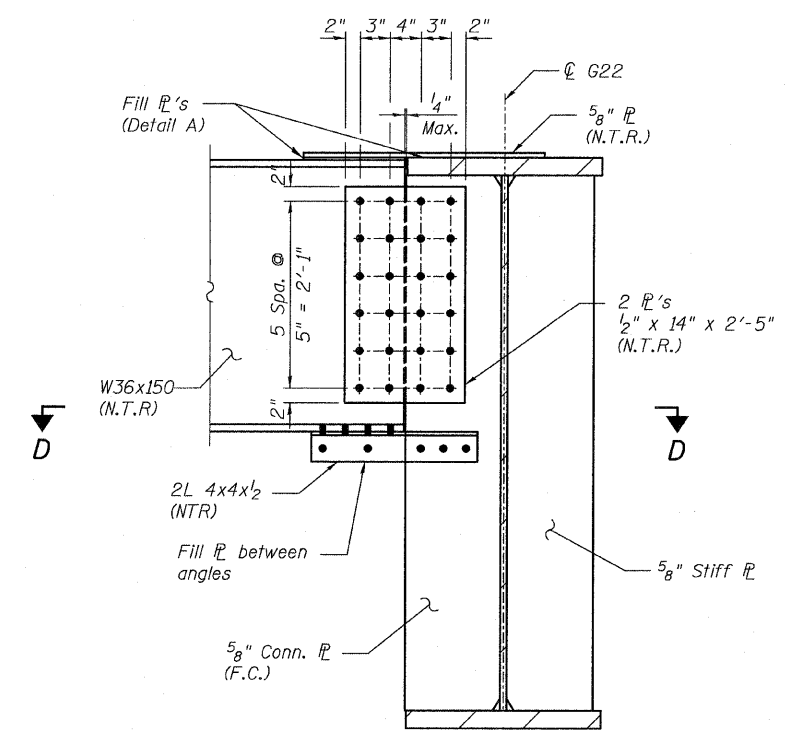
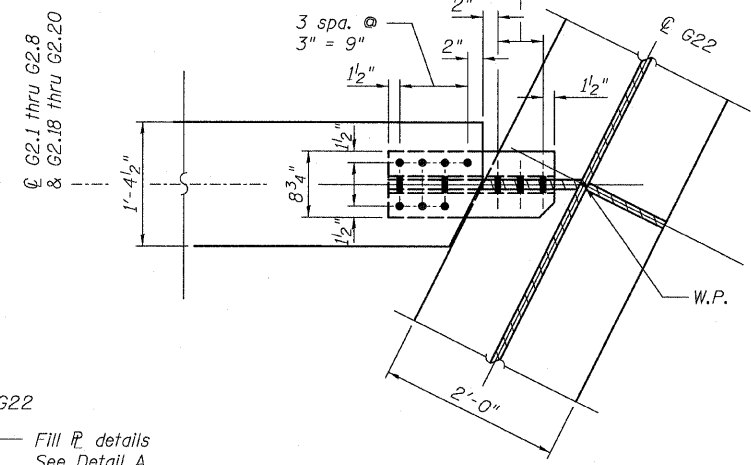
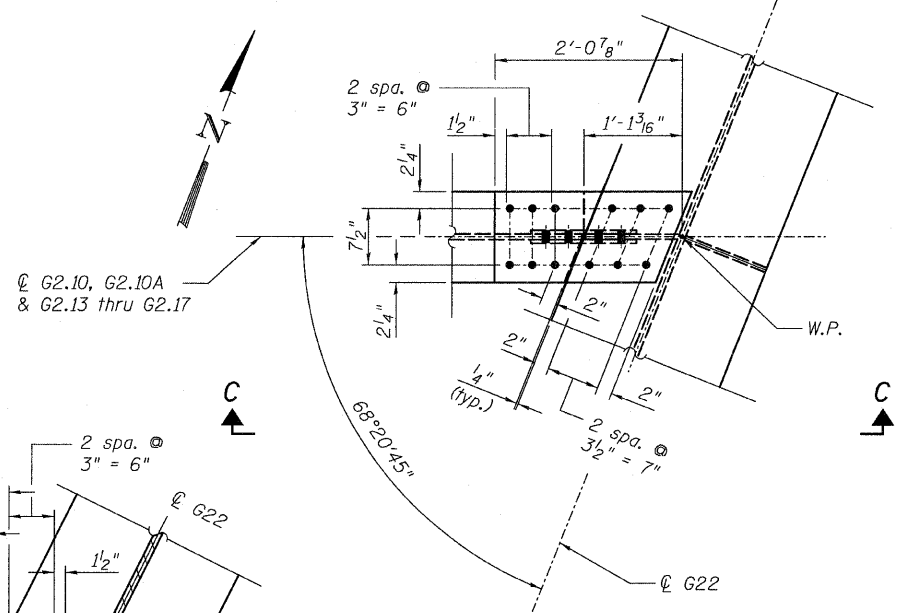
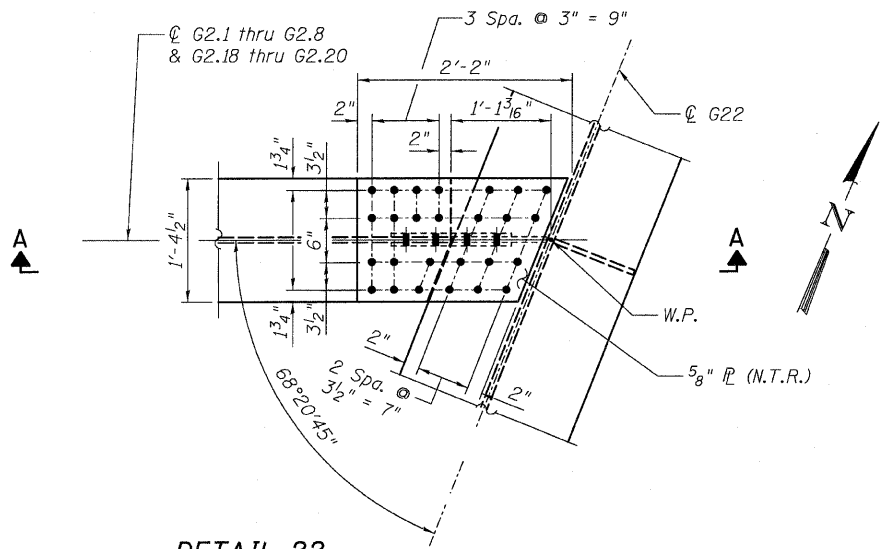


STATE OF ILLINOIS
DEPARTMENT OF TRANSPORTATION



- NOTES:**
- All steel shall be AASHTO M 270 Grade 50.
 - F.C. - denotes Fracture Critical material, AASHTO Zone II.
 - Load carrying components designated "N.T.R." shall conform to the supplemental requirements for Notch Toughness, Zone 2.

CONNECTION DETAILS 22 & 23
RAMP 2 FLARE
STRUCTURE NO. 016-0724

TYLIN INTERNATIONAL	DESIGNED - JPN	REVISIONS		SHEET NO. 140 239 SHEETS	F.A.I. RTE.	SECTION	COUNTY	TOTAL SHEETS	SHEET NO.	
	CHECKED - AMD,	NAME	DATE		55	0711.2R & 1011.1BR	COOK	741	464	
	DRAWN - MAU				CONTRACT NO. 60999					
	CHECKED - AMD,				FED. ROAD DIST. NO. 1 ILLINOIS FED. AID PROJECT					
	DATE - 03/25/2011									

4/28/2011 12:53:17 PM
 p:\01345\structure\02_Central_Ave_016-0724\y55f2\Framed110.dwg