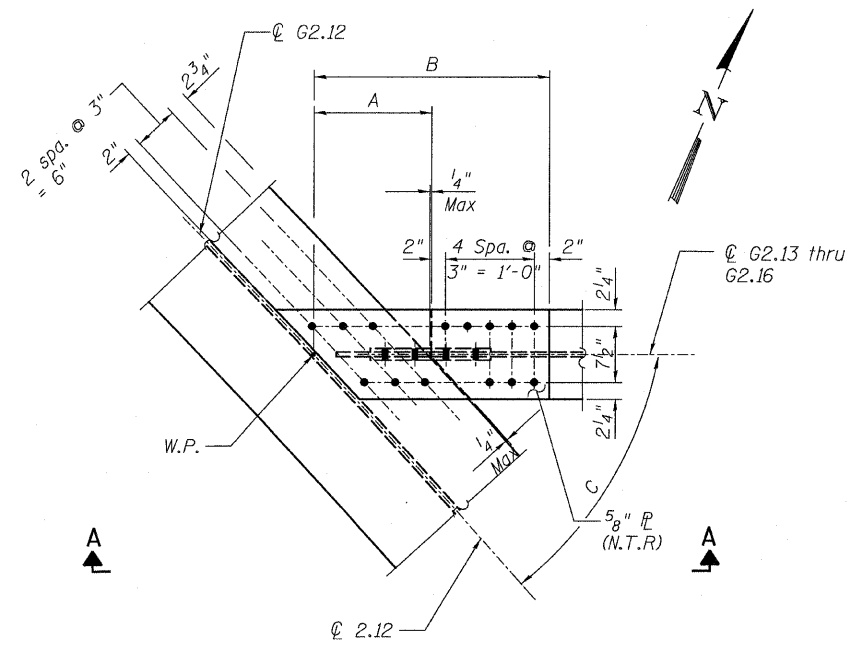
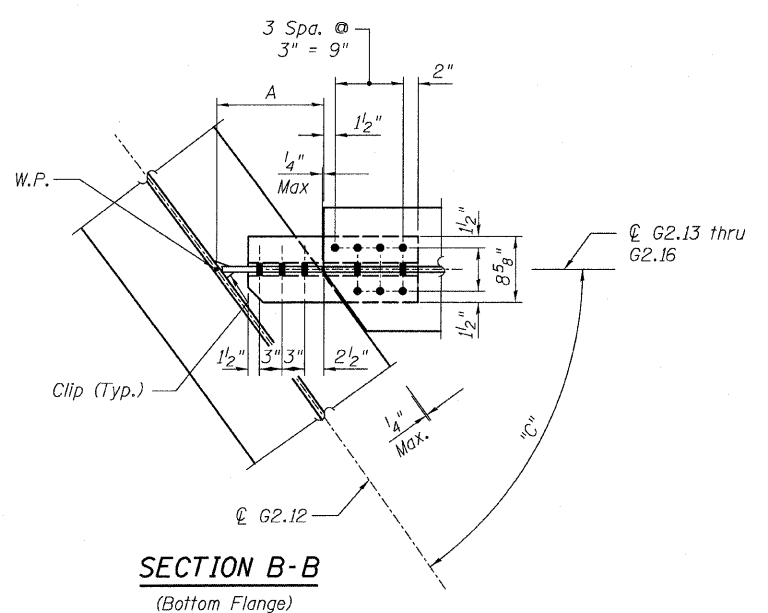


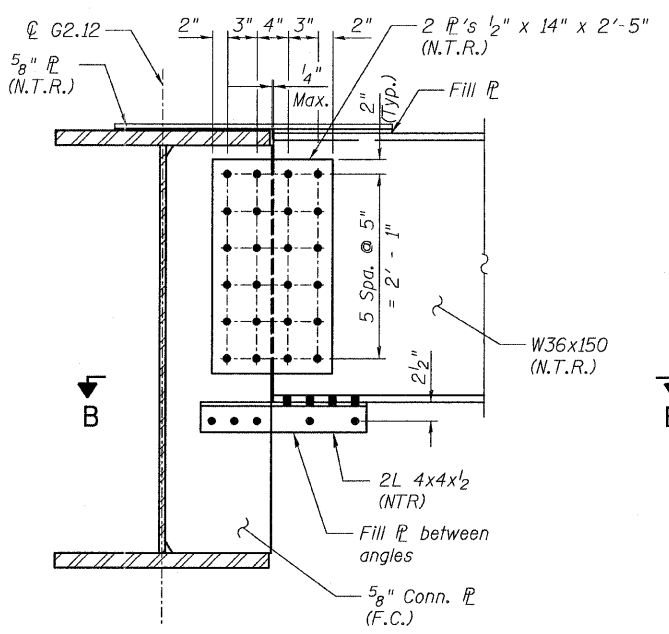
STATE OF ILLINOIS
DEPARTMENT OF TRANSPORTATION



DETAIL 25
(Top Flange)

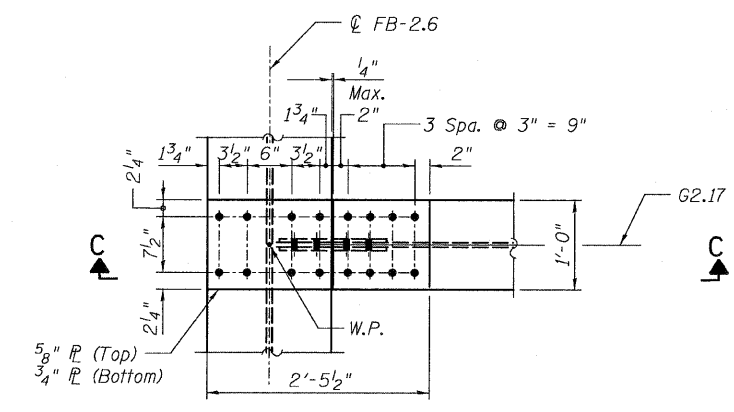


SECTION B-B
(Bottom Flange)

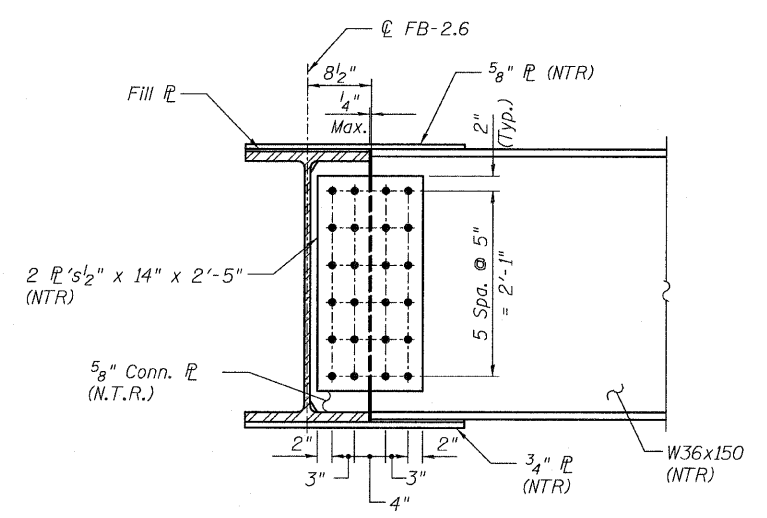


SECTION A-A

Girder	Dimensions		
	A	B	C
G2.13	1'-6 ⁵ / ₈ "	2'-10 ⁵ / ₈ "	45°21'53"
G2.14	1'-7 ³ / ₄ "	2'-11 ³ / ₄ "	42°17'28"
G2.15	1'-9 ¹ / ₁₆ "	3'-1 ¹ / ₁₆ "	39°1'28"
G2.16	1'-10 ¹³ / ₁₆ "	3'-2 ¹³ / ₁₆ "	35°30'34"



DETAIL 26
(Top Flange)
(Bottom Flange Similar)



SECTION C-C

NOTES:

1. All steel shall be AASHTO M 270 Grade 50.
2. F.C. indicates Fracture Critical material, AASHTO Zone II.
3. Load carrying components designated "N.T.R." shall conform to the supplemental requirements for Notch Toughness, Zone 2.

CONNECTION DETAILS 25 & 26
RAMP 2 FLARE
STRUCTURE NO. 016-0724

TYLIN INTERNATIONAL	DESIGNED - JPN	REVISIONS		SHEET NO. 142	F.A.I RTE. 55	SECTION 0711.2R & 1011.1BR	COUNTY COOK	TOTAL SHEETS 741	SHEET NO. 466					
	CHECKED - AMD,	NAME	DATE							239 SHEETS	CONTRACT NO. 60999			
	DRAWN - JMA													
	CHECKED - AMD,													
DATE - 03/25/2011														

12:53:20 PM
D:\01345\structure\C2 Central Ave. 016-0724\55721.ramed112.dgn
4/28/2011