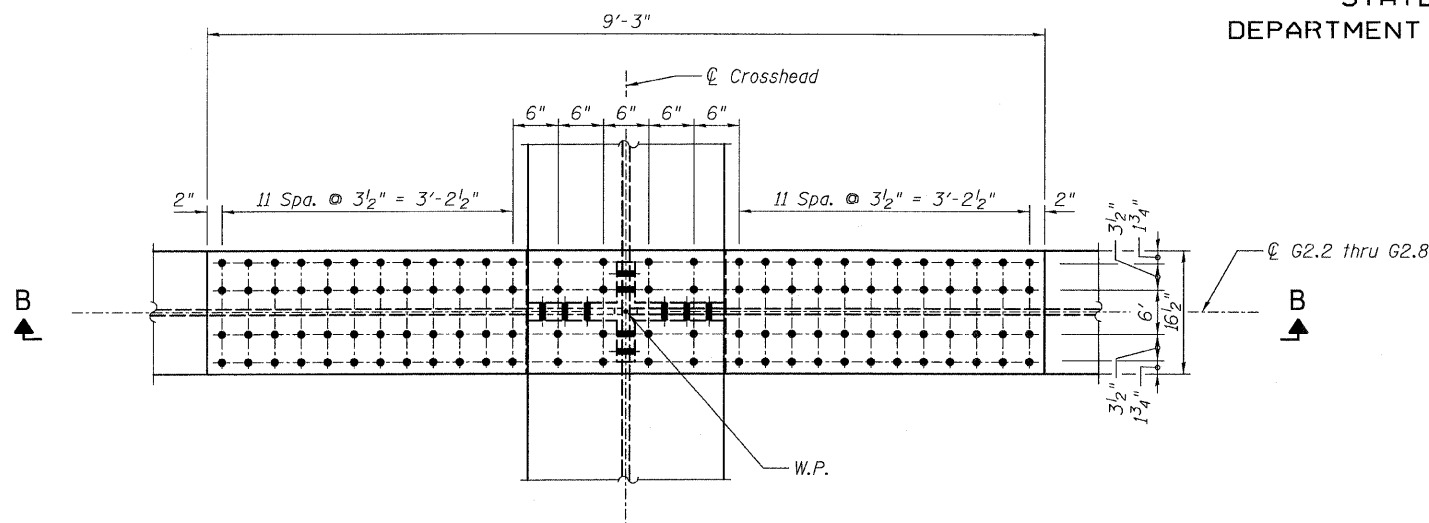
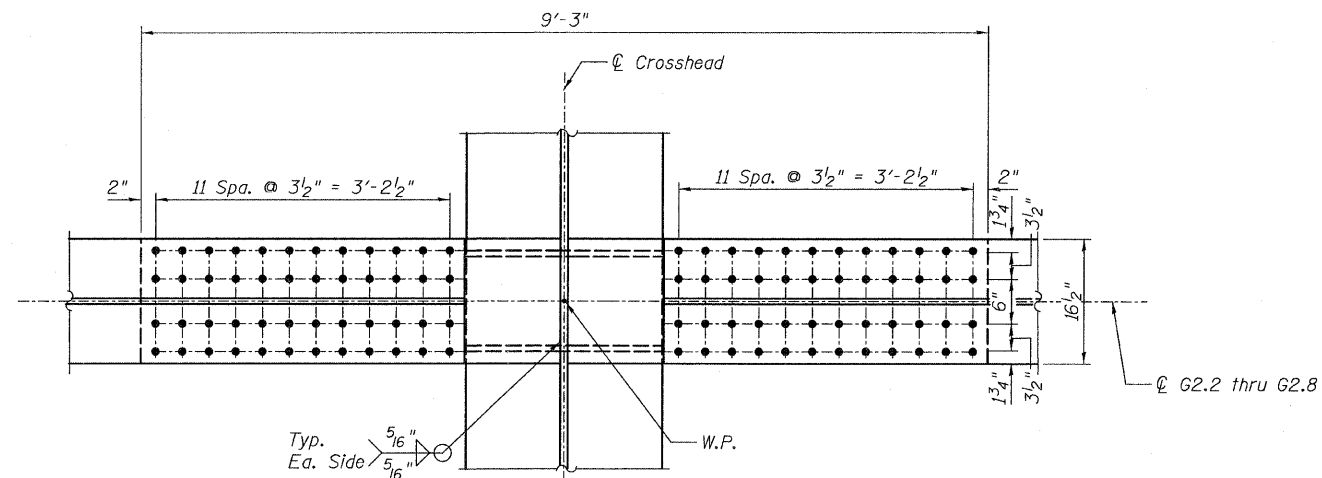


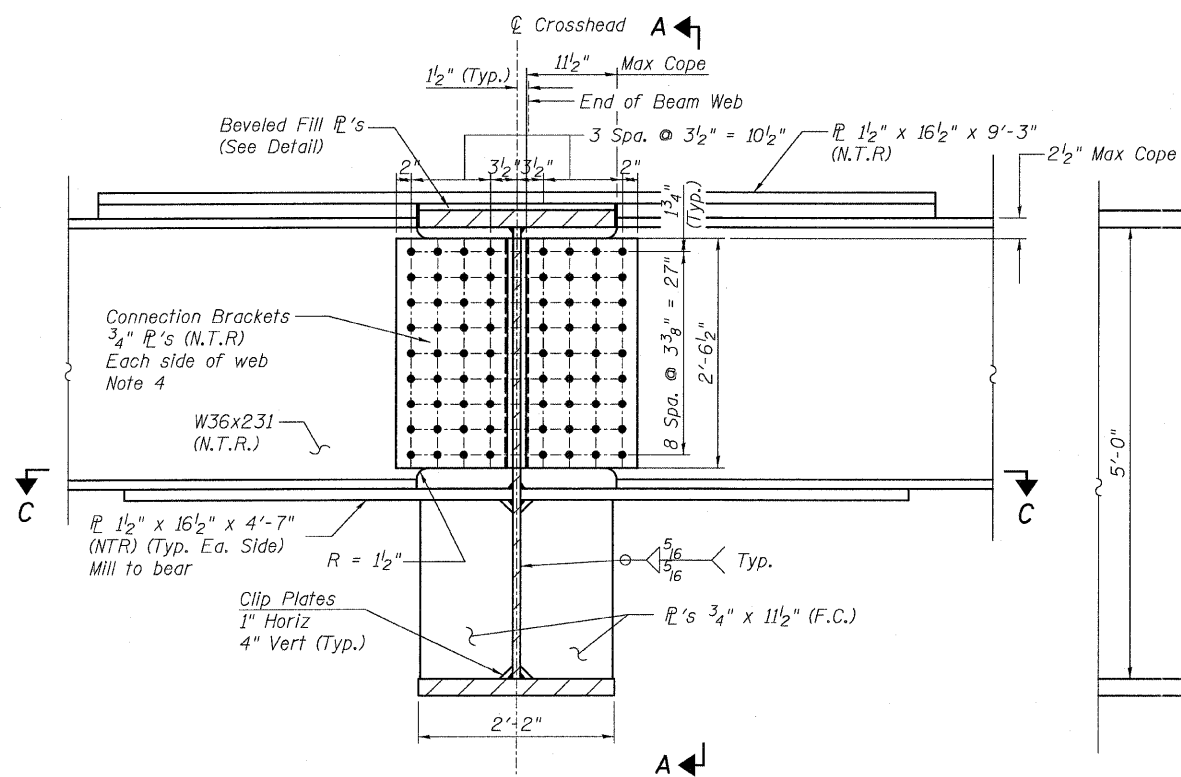
STATE OF ILLINOIS  
DEPARTMENT OF TRANSPORTATION



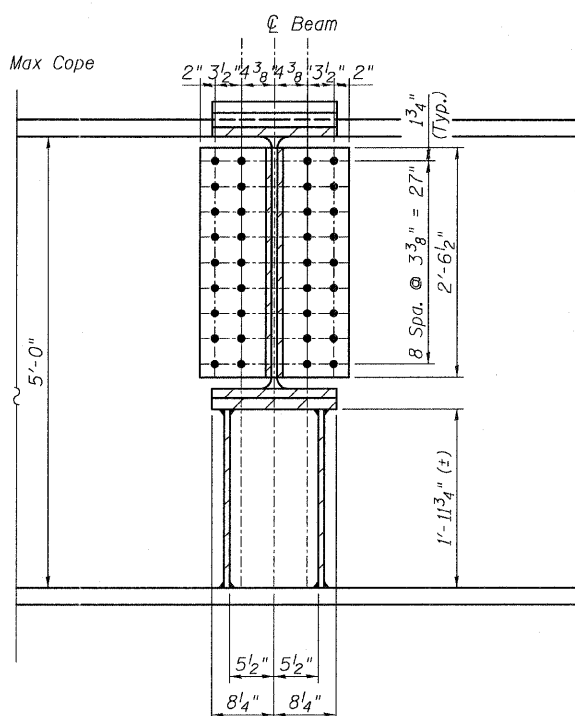
**DETAIL 32**  
(Top Flange)



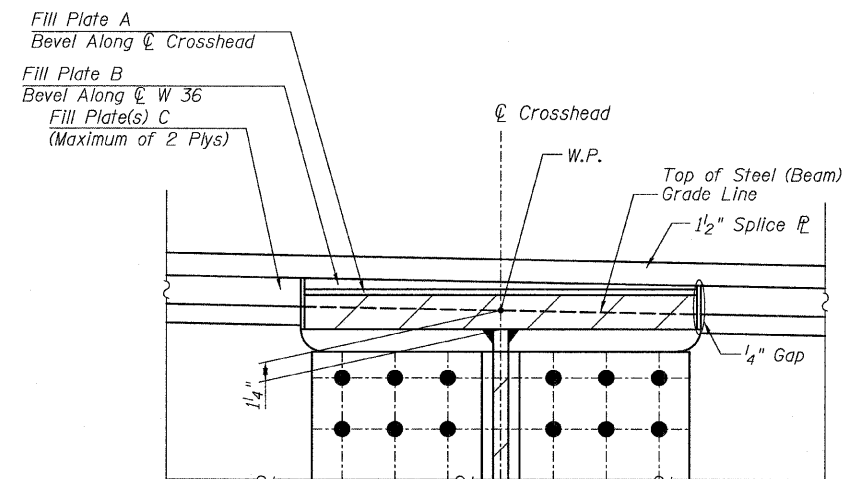
**SECTION C-C**  
(Bottom Flange)



**SECTION B-B**



**SECTION A-A**



**FILL PLATE DETAIL**

Note:  
Notify Engineer if total fill PL thickness to exceed 1 1/8"

**NOTES:**

- All steel shall be AASHTO M 270 Grade 50.
- All bolts shall be 1"  $\phi$  with 1 1/16"  $\phi$  holes.
- Load carrying components designated "N.T.R." shall conform to the supplemental requirements for Notch Toughness, Zone 2.
- 3/4" Connection brackets can be fabricated from single bent plate or 2 plates utilizing a pre-qualified, full penetration corner joint welded assembly.

**CONNECTION DETAIL 32**  
**RAMP 2 FLARE**  
**STRUCTURE NO. 016-0724**

<b>TYLIN INTERNATIONAL</b>	DESIGNED - JPN	REVISIONS		SHEET NO. 145	F.A.I. RTE. 55	SECTION 0711.2R & 1011.1BR	COUNTY COOK	TOTAL SHEETS 741	SHEET NO. 469
	CHECKED - AMD,	NAME	DATE						
	DRAWN - JMA								
	CHECKED - AMD,								
	DATE - 03/25/2011			239 SHEETS	CONTRACT NO. 60999		FED. ROAD DIST. NO. 1 ILLINOIS FED. AID PROJECT		