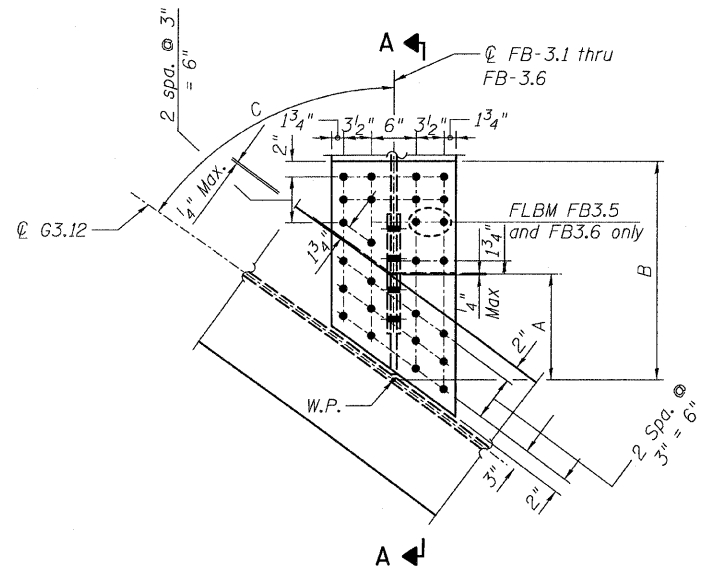
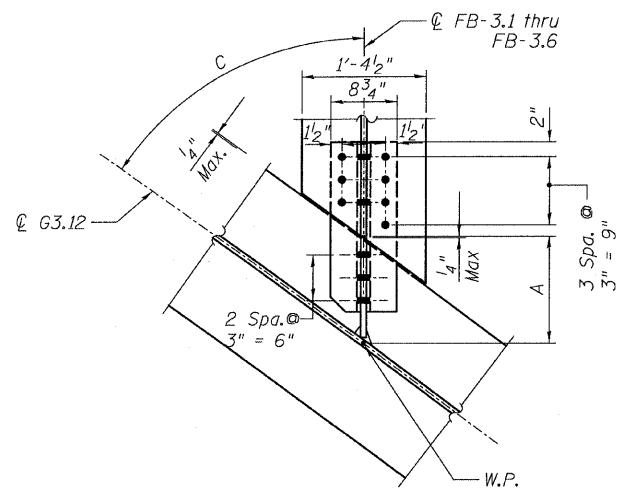


STATE OF ILLINOIS
DEPARTMENT OF TRANSPORTATION

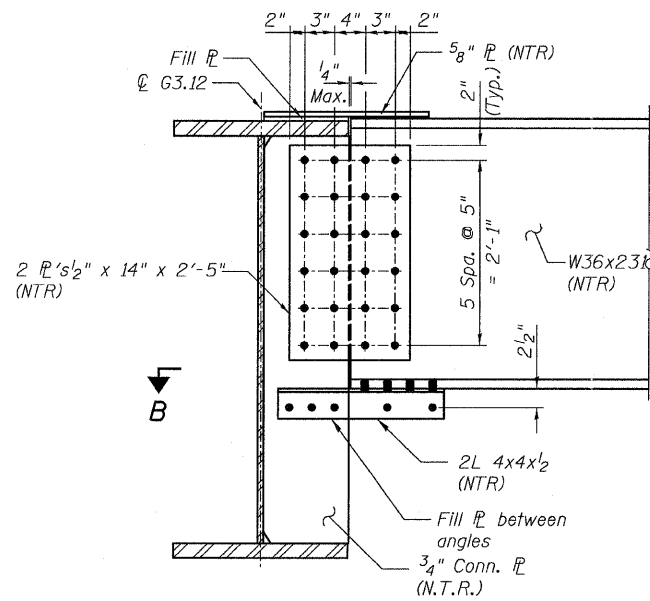


DETAIL 27
(Top Flange)

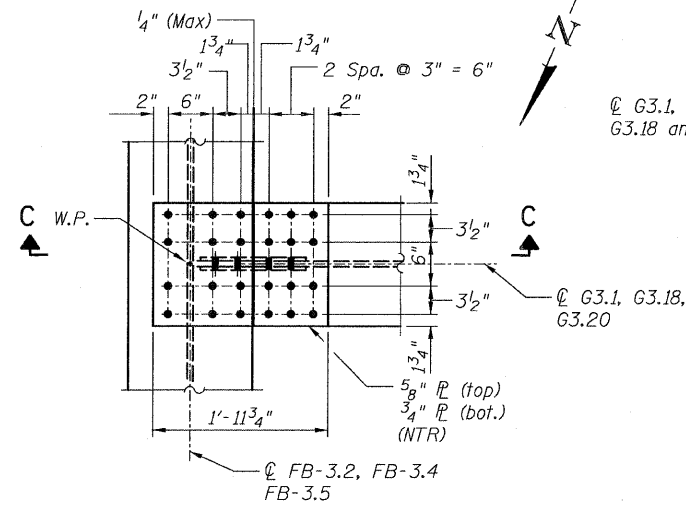
Floor Beam	Dimensions		
	A	B	C
FB-3.1	11 ⁵ / ₁₆ "	1'-9 ⁵ / ₈ "	84°48'39"
FB-3.2	11 ⁷ / ₁₆ "	1'-10 ³ / ₈ "	79°41'15"
FB-3.3	11 ³ / ₈ "	1'-11 ³ / ₈ "	75°19'37"
FB-3.4	11 ¹⁵ / ₁₆ "	2'-0"	70°52'39"
FB-3.5	1'-0 ⁵ / ₁₆ "	2'-2 ⁵ / ₈ "	60°38'59"
FB-3.6	1'-1 ¹ / ₂ "	2'-3 ³ / ₈ "	56°35'24"



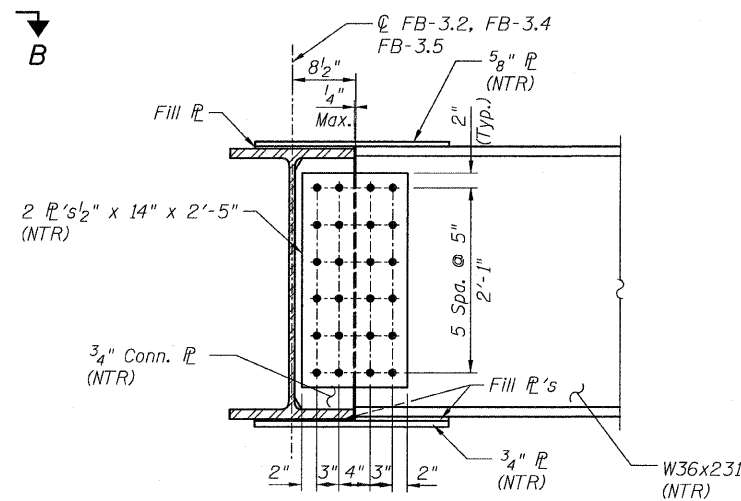
SECTION B-B
(Bottom Flange)



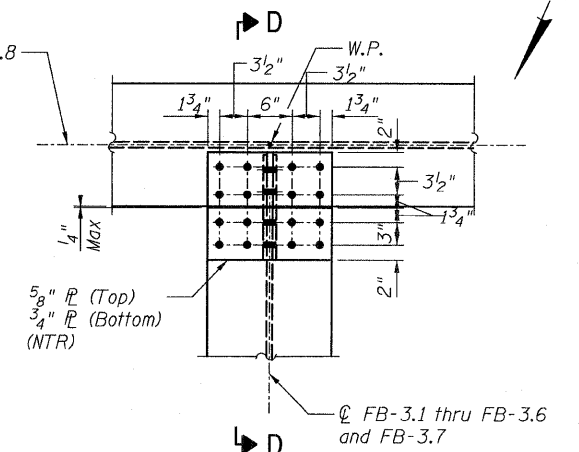
SECTION A-A



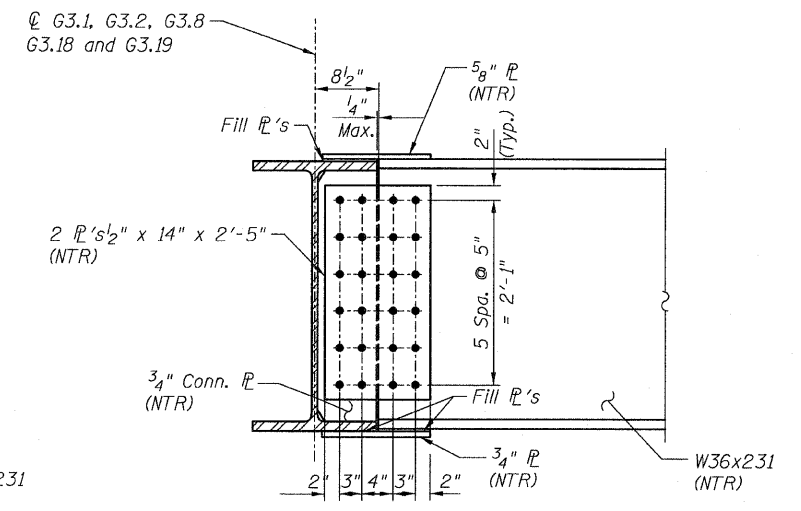
DETAIL 28
(Top Flange)
(Bottom Flange Similar)



SECTION C-C



DETAIL 29
(Top Flange)
(Bottom Flange Similar)



SECTION D-D

NOTES:

- All steel shall be AASHTO M 270 Grade 50.
- Load carrying components designated "N.T.R." shall conform to the supplemental requirements for Notch Toughness, Zone 2.

CONNECTION DETAILS 27, 28 & 29
RAMP 3 FLARE
STRUCTURE NO. 016-0724

TYLIN INTERNATIONAL

DESIGNED - JPN	REVISIONS	
	NAME	DATE
CHECKED - AMD,		
DRAWN - JMA		
CHECKED - AMD,		
DATE - 03/25/2011		

SHEET NO. 162	F.A.I. RTE.	SECTION	COUNTY	TOTAL SHEETS	SHEET NO.
	239 SHEETS	55	0711.2R & 1011.1BR	COOK	741 486
			CONTRACT NO. 60999		
FED. ROAD DIST. NO. 1 ILLINOIS FED. AID PROJECT					