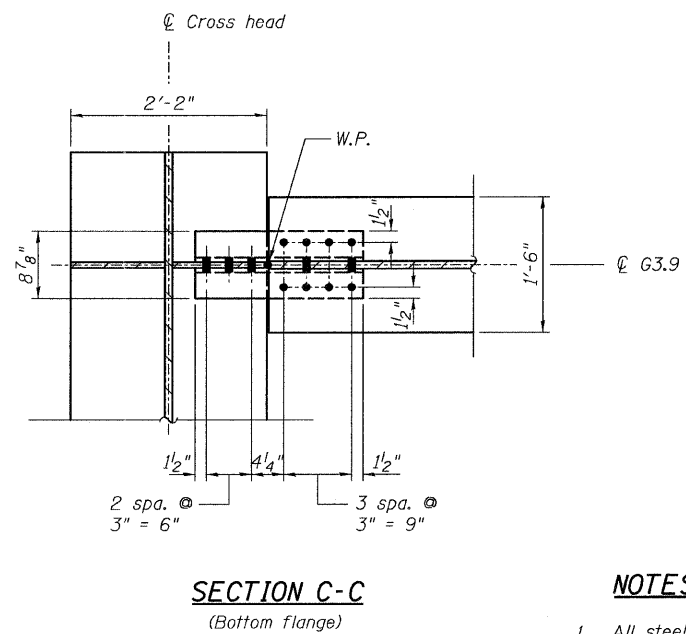
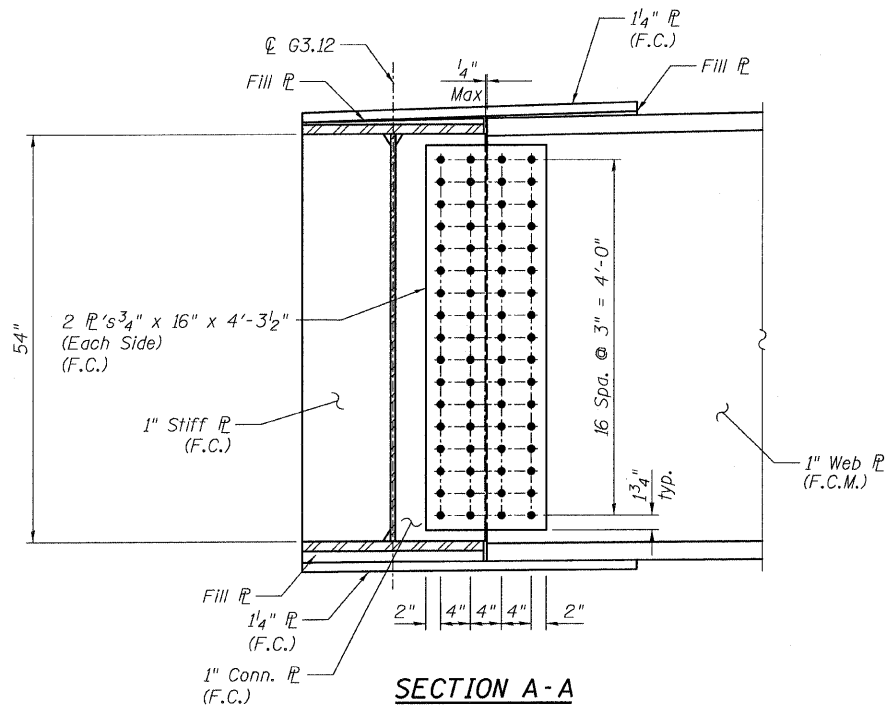
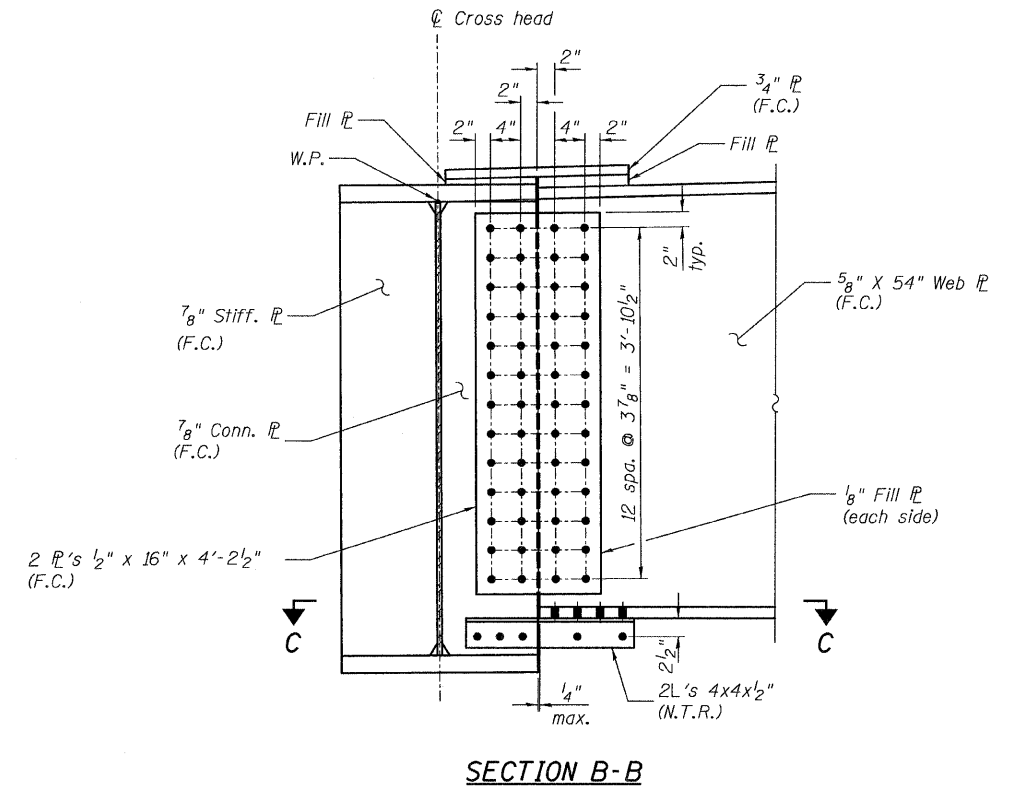
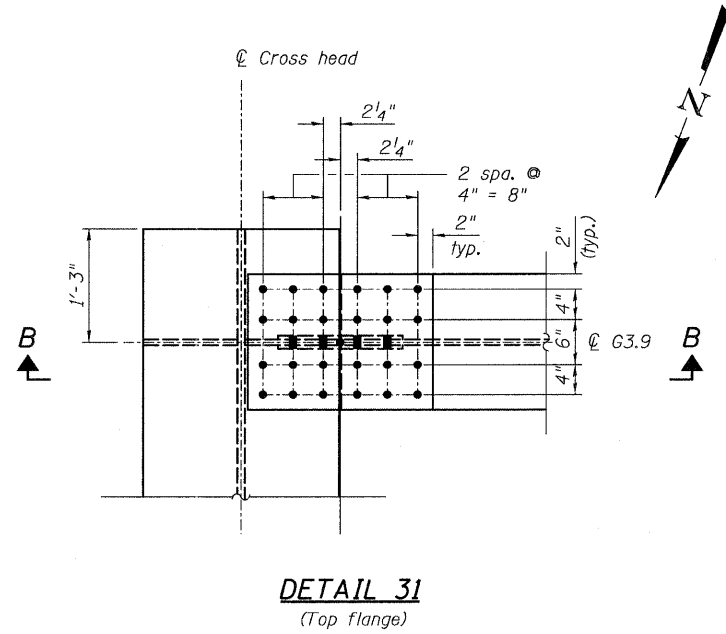
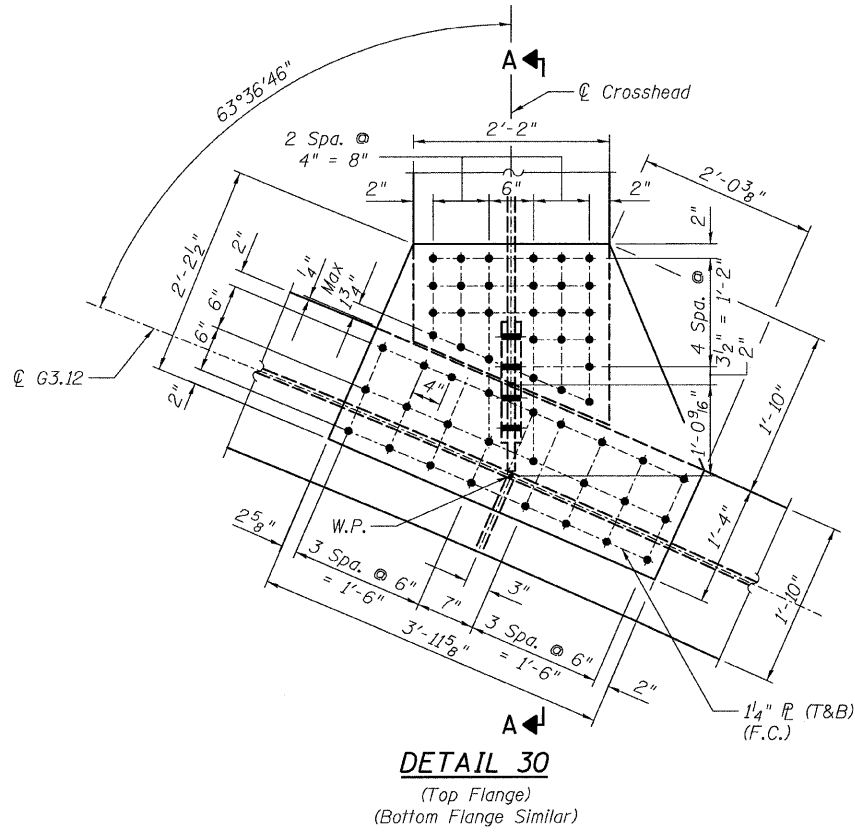


STATE OF ILLINOIS  
DEPARTMENT OF TRANSPORTATION



- NOTES:**
- All steel shall be AASHTO M 270 Grade 50.
  - F.C. indicates Fracture Critical Material, AASHTO Zone II.
  - Load carrying components designated "N.T.R." shall conform to the supplemental requirements for Notch Toughness, Zone 2.

**CONNECTION DETAILS 30 & 31**  
**RAMP 3 FLARE**  
**STRUCTURE NO. 016-0724**

<b>TYLIN INTERNATIONAL</b>	DESIGNED - JPN	REVISIONS	
	CHECKED - AMD,	NAME	DATE
	DRAWN - JMA		
	CHECKED - AMD,		
	DATE - 03/25/2011		

SHEET NO. 163	F.A.I RTE.	SECTION	COUNTY	TOTAL SHEETS	SHEET NO.
	239 SHEETS	55	0711.2R & 1011.1BR	COOK	741 487
			CONTRACT NO. 60999		
FED. ROAD DIST. NO. 1 ILLINOIS FED. AID PROJECT					

5/9/2011 9:09:10 AM p:\01345\structur\C2\_Central\_Ave\_016-0724\55731rmedit14.dgn