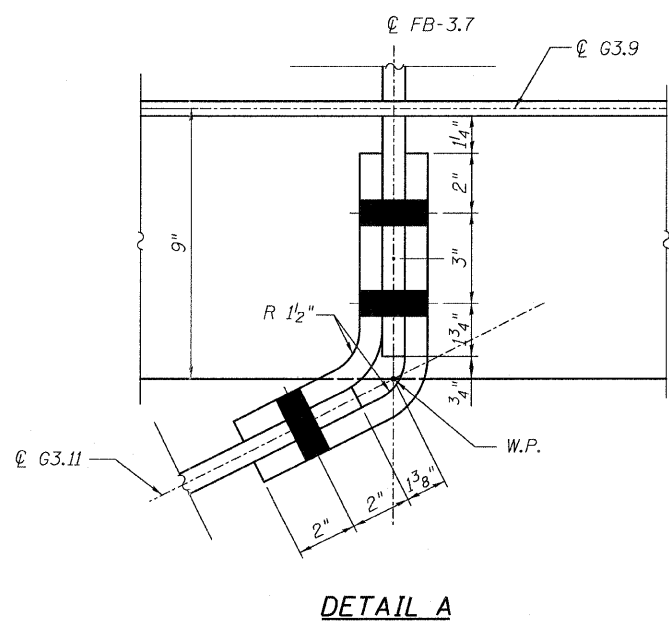
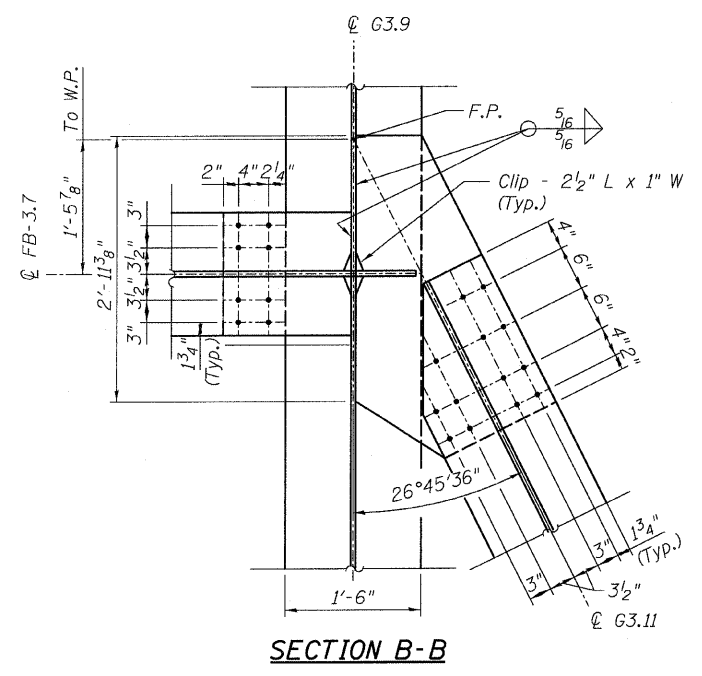
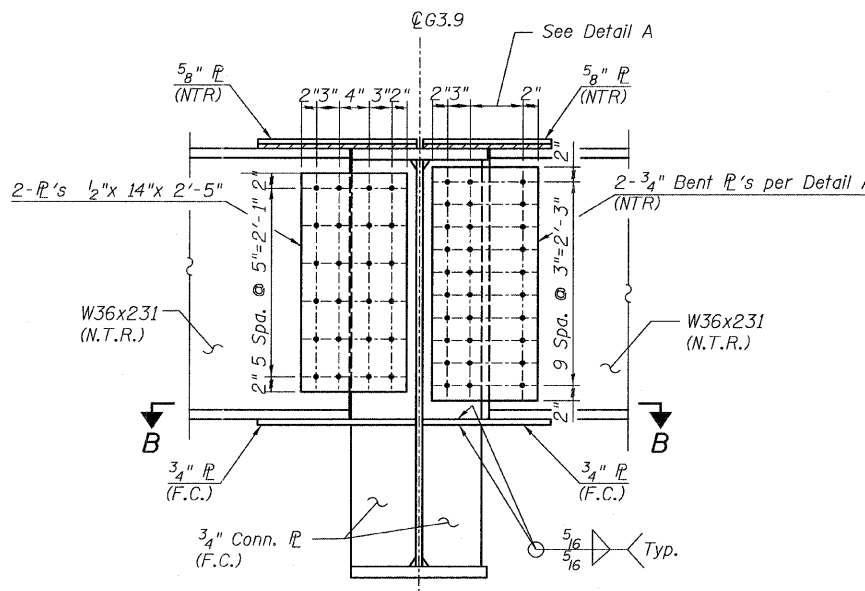
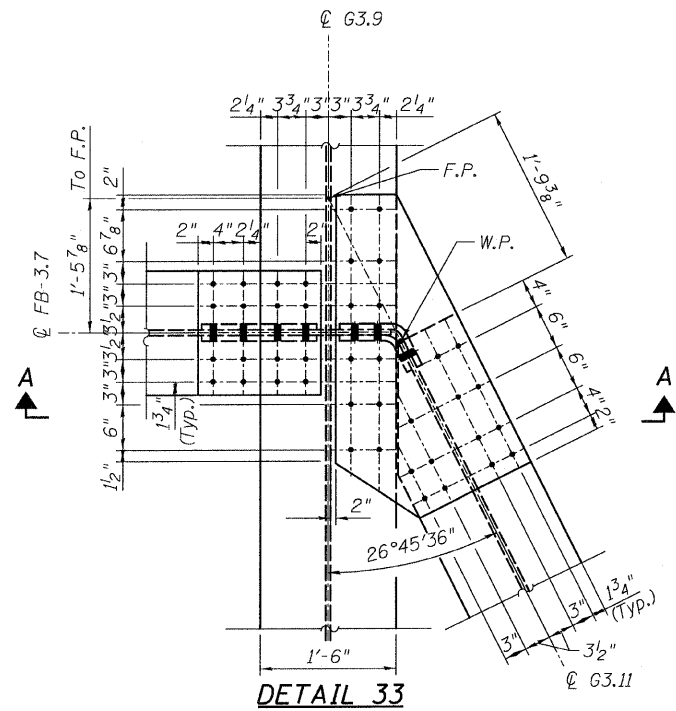


STATE OF ILLINOIS
DEPARTMENT OF TRANSPORTATION

NOTES:

1. All steel shall be AASHTO M 270 Grade 50.
2. F.C. indicates Fracture Critical Material, AASHTO Zone 2.
3. Load carrying components designated "N.T.R." shall conform to the supplemental requirements for Notch Toughness, Zone 2.
4. Grain to run horizontally in bent \bar{r} .



**CONNECTION DETAIL 33
RAMP 3 FLARE
STRUCTURE NO. 016-0724**

TYLIN INTERNATIONAL	DESIGNED - JPN	REVISIONS		SHEET NO. 165	F.A.I RTE.	SECTION	COUNTY	TOTAL SHEETS	SHEET NO.							
	CHECKED - AMD,	NAME	DATE							239 SHEETS	55	0711.2R & 1011.1BR	COOK	741	489	
	DRAWN - JMA															CONTRACT NO. 60999
	CHECKED - AMD,															
	DATE - 03/25/2011															

pi:\01345\structure\2_Central_Ave_016-0724\155731_ramedt116.dgn 4/28/2011 12:57:53 PM