

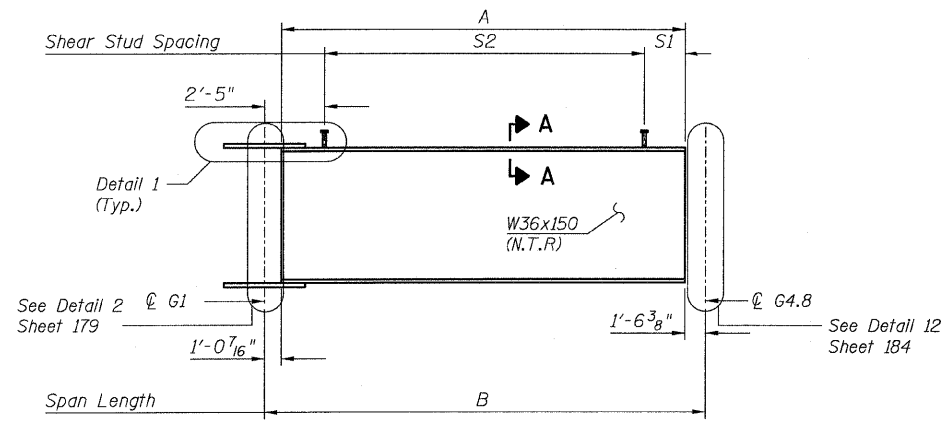
STATE OF ILLINOIS
DEPARTMENT OF TRANSPORTATION

GIRDER DIMENSIONS

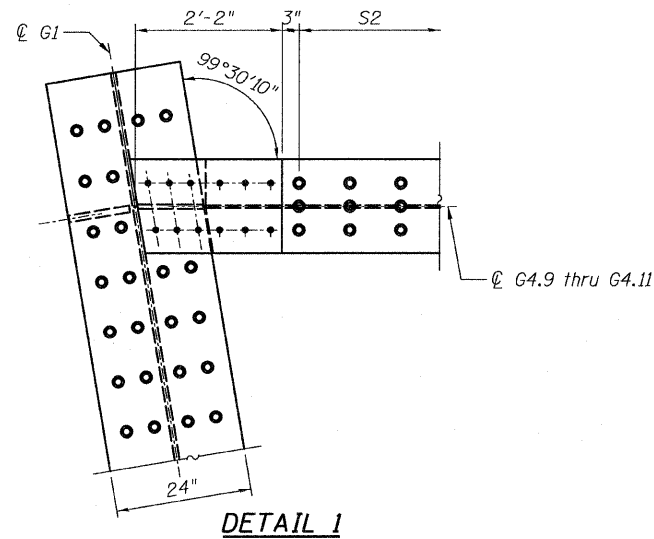
Girder	A	B
G4.9	8'-2 ⁵ / ₁₆ "	10'-9 ¹ / ₈ "
G4.10	18'-11 ¹ / ₁₆ "	21'-6 ¹ / ₂ "
G4.10A	29'-9"	32'-3 ⁵ / ₁₆ "

SHEAR STUD SPACING

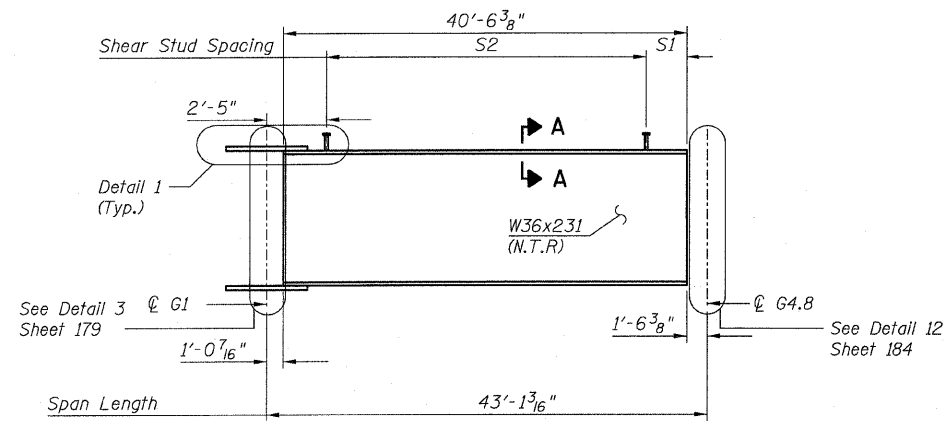
Girder	S1	S2
G4.9	9 ³ / ₄ "	3 Spa. @ 24" = 6'-0"
G4.10	1'-7 ¹ / ₈ "	8 Spa. @ 24" = 16'-0"
G4.10A	4 ¹ / ₁₆ "	14 Spa. @ 24" = 28'-0"
G4.11	7 ¹ / ₈ "	77 Spa. @ 6" = 38'-6"



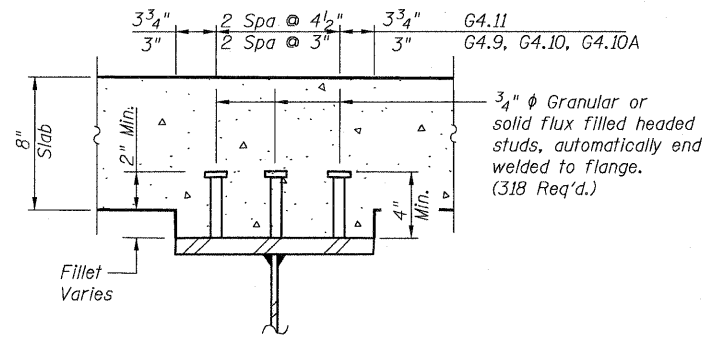
GIRDER ELEVATION - G4.9, G4.10 AND G4.10A
(Looking South)



DETAIL 1



GIRDER ELEVATION - G4.11
(Looking South)



SECTION A-A

NOTES:

- All steel shown on this sheet shall conform to the requirements of AASHTO M270 GR 50.
- Load carrying components designated "NTR" shall conform to the supplemental requirements for Notch Toughness, Zone 2.
- N.F. - denotes Near Face.

GIRDER ELEVATIONS 3
RAMP 4 FLARE
S.N. 016-0724

TYLIN INTERNATIONAL	DESIGNED - EKH, JMA, PK	REVISIONS		SHEET NO. 173	F.A.I. RTE. 55	SECTION 0711.2R & 1011.1BR	COUNTY COOK	TOTAL SHEETS 741	SHEET NO. 497
	CHECKED - AMD,	NAME	DATE						
	DRAWN - EKH, JMA, PK								
	CHECKED - AMD,								
	DATE - 03/25/2011			239 SHEETS	CONTRACT NO. 60999				
						FED. ROAD DIST. NO. 1 ILLINOIS FED. AID PROJECT			

p:\01345\structure\c2 Central Ave. 016-0724\15574framed.t5.dgn 4/28/2011 12:58:03 PM