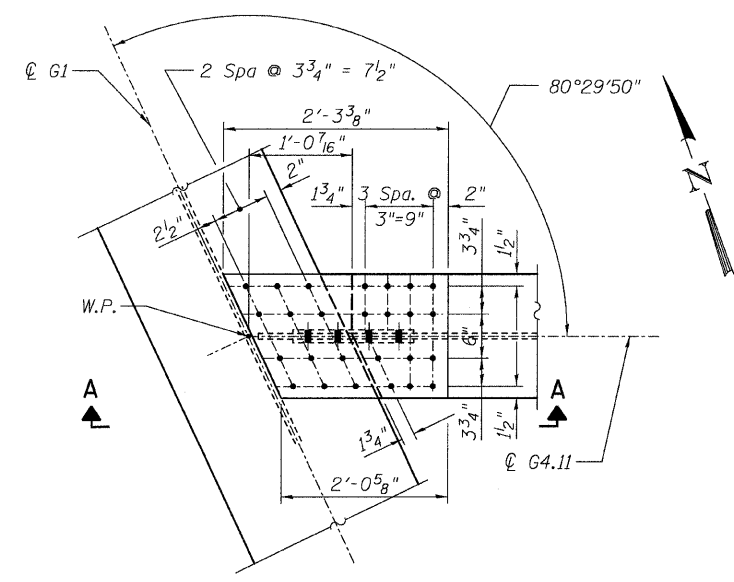
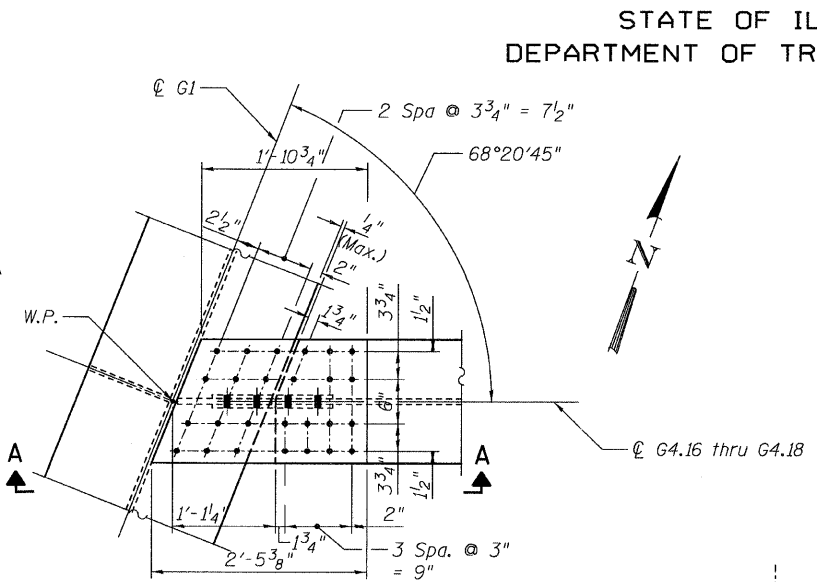


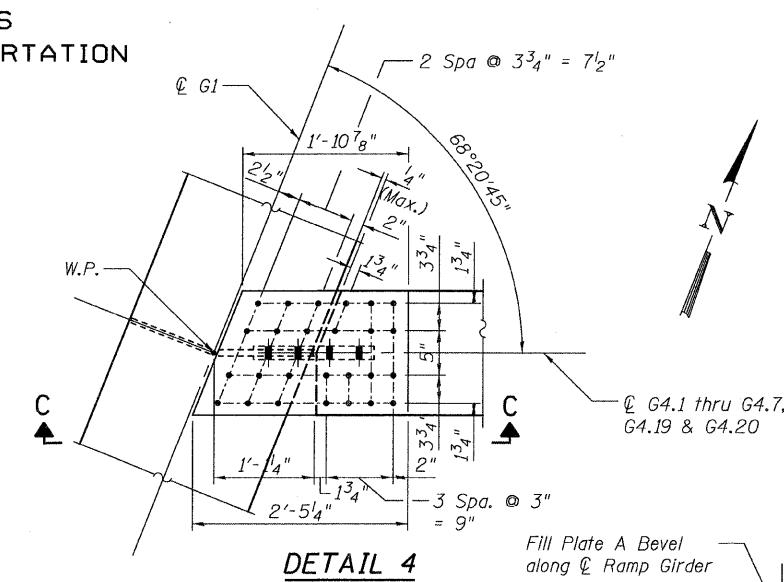
STATE OF ILLINOIS  
DEPARTMENT OF TRANSPORTATION



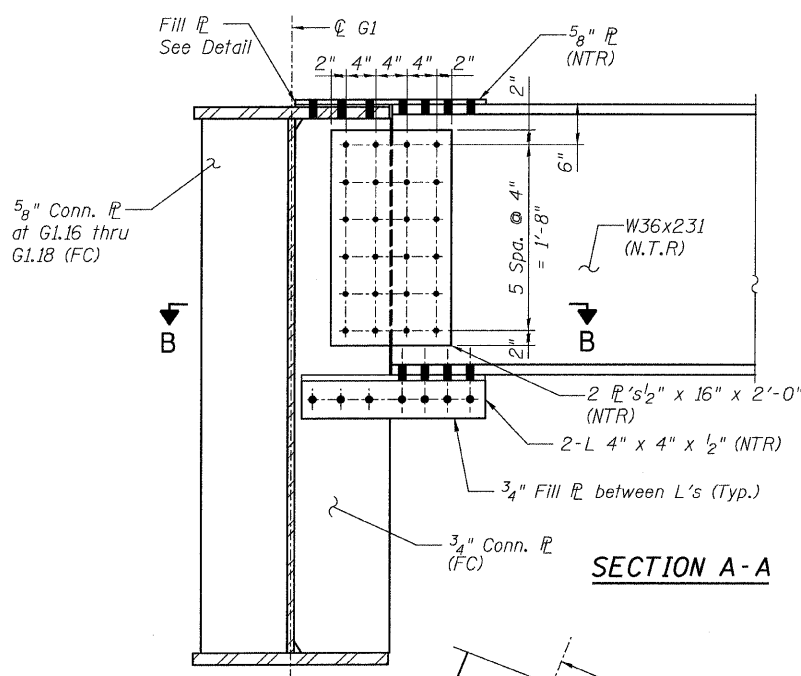
**DETAIL 3**  
(Top Flange @ G4.11)



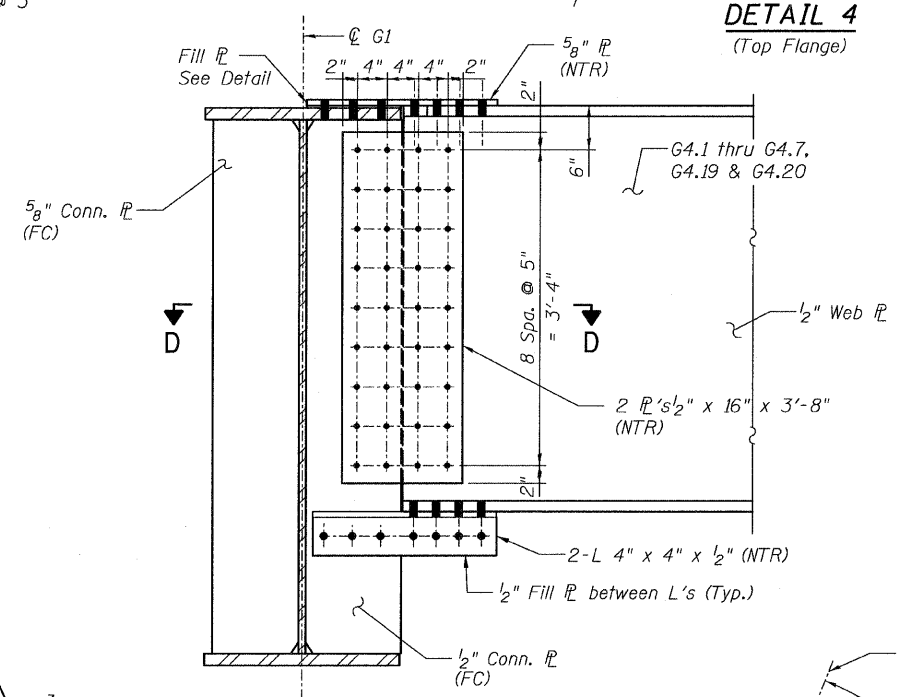
**DETAIL 3**  
(Top Flange @ G4.16 thru G4.18)



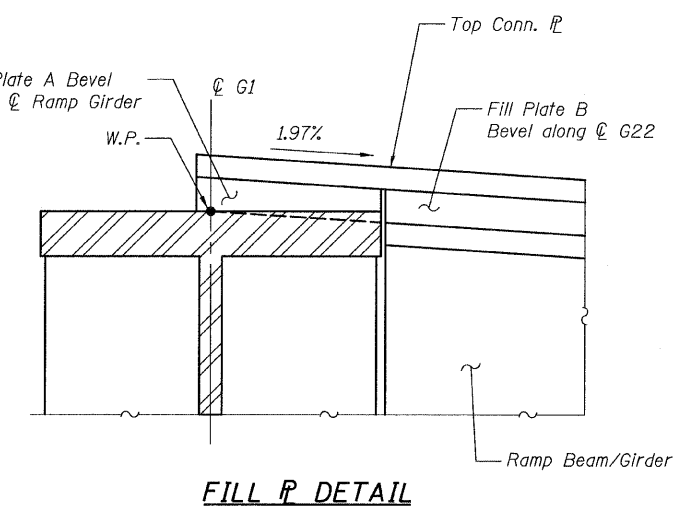
**DETAIL 4**  
(Top Flange)



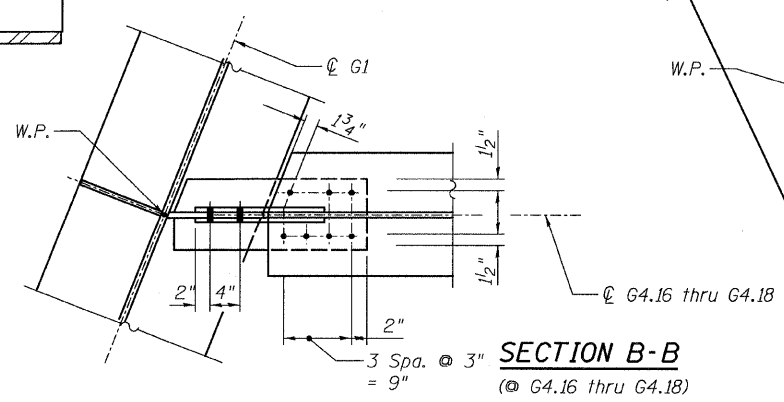
**SECTION A-A**



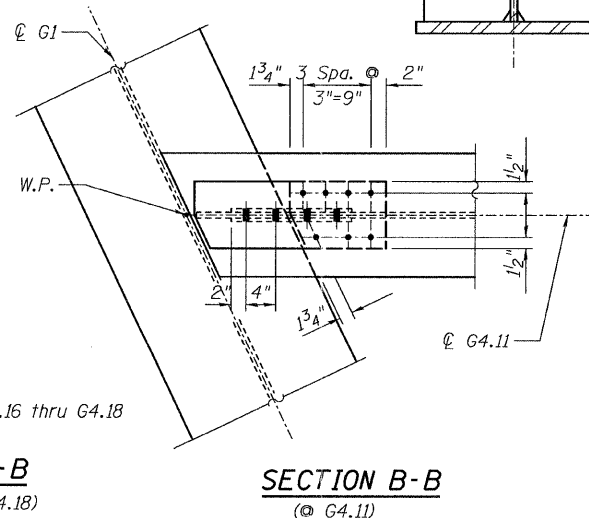
**SECTION C-C**



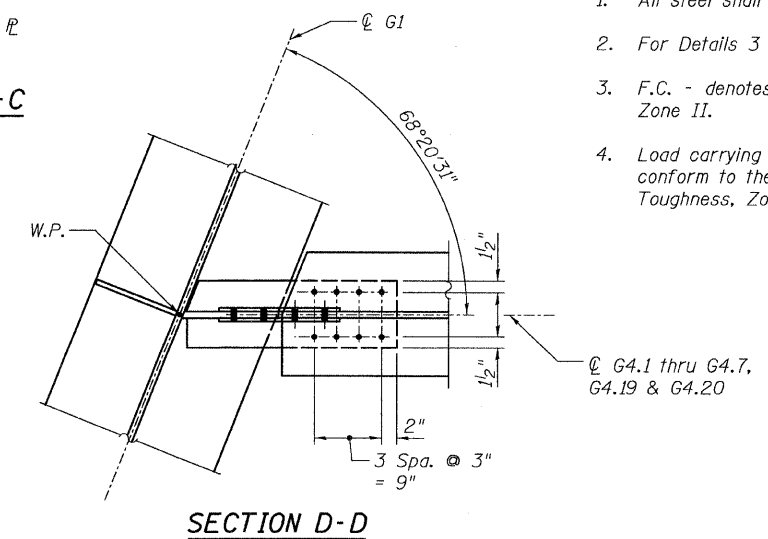
**FILL @ DETAIL**



**SECTION B-B**  
(@ G4.16 thru G4.18)



**SECTION B-B**  
(@ G4.11)



**SECTION D-D**

**NOTES:**

1. All steel shall be AASHTO M270 Grade 50
2. For Details 3 and 4 locations, see Sheet 97.
3. F.C. - denotes Fracture Critical Material, AASHTO Zone II.
4. Load carrying components designated "NTR" shall conform to the Supplemental Requirements for Notch Toughness, Zone 2.

**CONNECTION DETAILS 3&4**  
**RAMP 4 FLARE**  
**STRUCTURE NO. 016-0724**

<b>TYLIN INTERNATIONAL</b>	DESIGNED - EKH, JMA	REVISIONS		SHEET NO. 180	F.A.I. RTE.	SECTION	COUNTY	TOTAL SHEETS	SHEET NO.	
	CHECKED - AMD,	NAME	DATE		239 SHEETS	55	0711.2R & 1011.1BR	COOK	741	504
	DRAWN - EKH, JMA				CONTRACT NO. 60999					
	CHECKED - AMD,				FED. ROAD DIST. NO. 1 ILLINOIS FED. AID PROJECT					
	DATE - 03/25/2011									

5/9/2011 9:09:13 AM p:\01345\structure\02 Central Ave. 016-0724\15514\Framed112.dgn