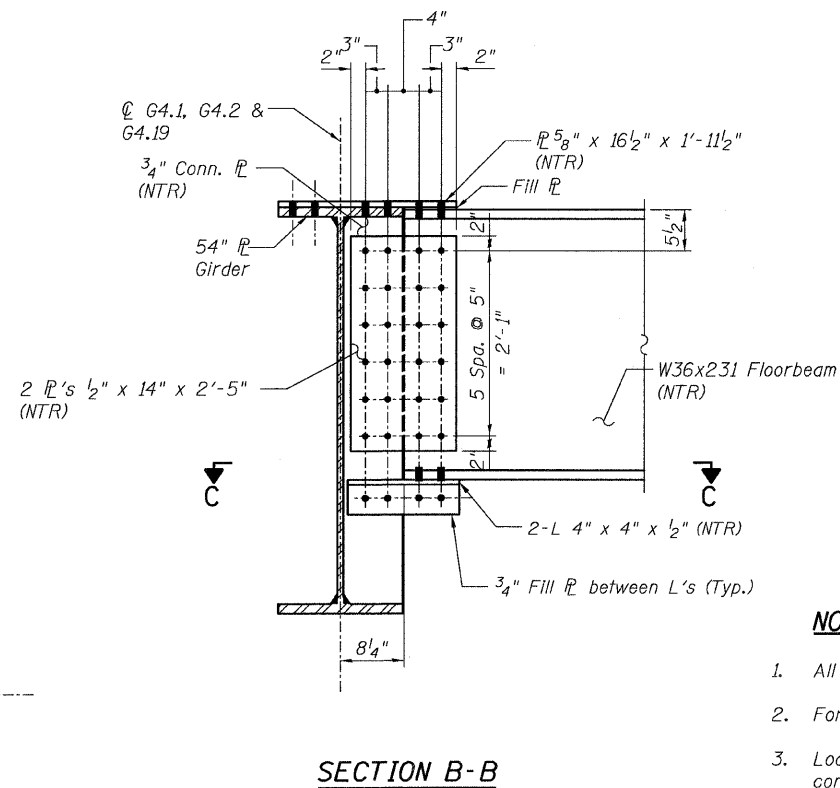
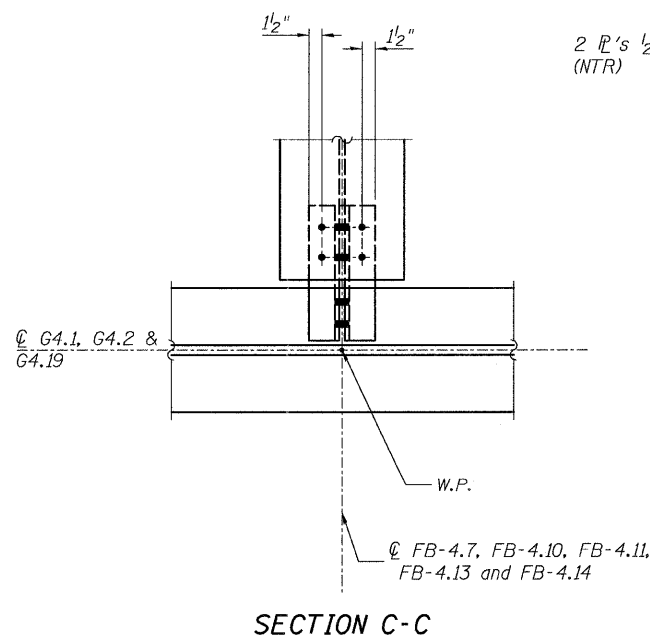
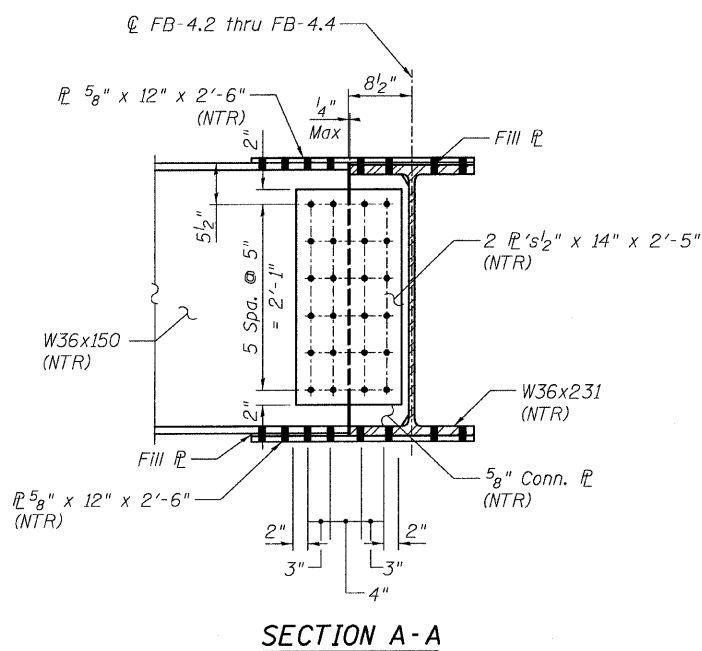
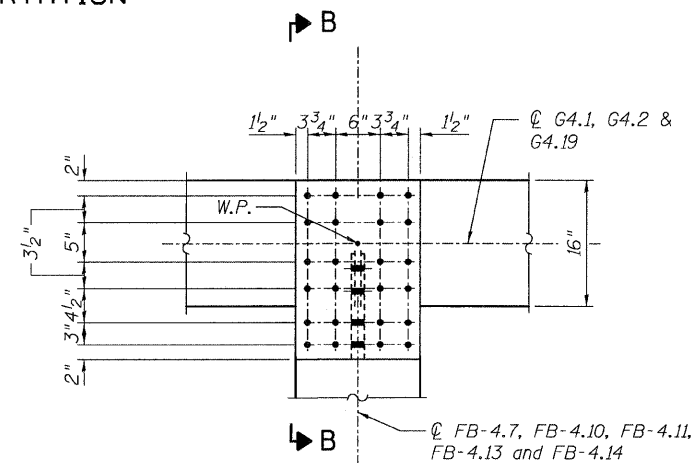
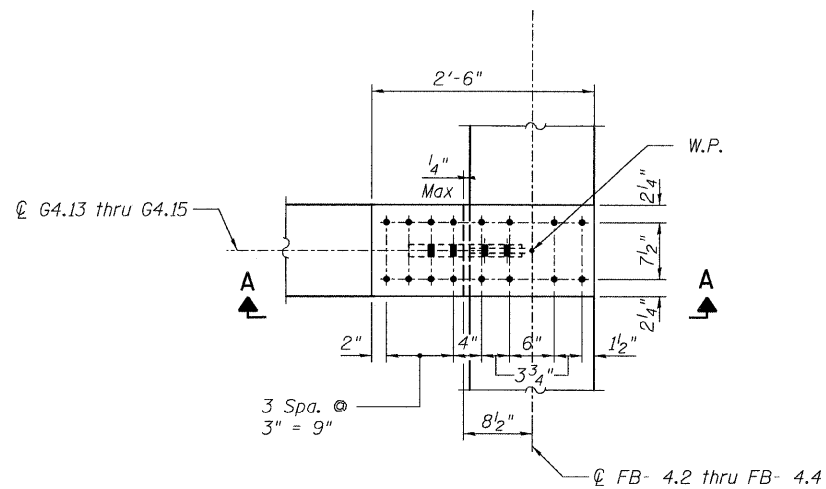


STATE OF ILLINOIS
DEPARTMENT OF TRANSPORTATION



NOTES:

- All steel shall be AASHTO M270 Grade 50.
- For Details 9 and 10 locations, see Sheet 97.
- Load carrying components designated "NTR" shall conform to the Supplemental Requirements for Notch Toughness, Zone 2.

**CONNECTION DETAILS 9&10
RAMP 4 FLARE
STRUCTURE NO. 016-0724**

TYLIN INTERNATIONAL

DESIGNED - EKH, JMA	REVISIONS	
	NAME	DATE
CHECKED - AMD,		
DRAWN - EKH, JMA		
CHECKED - AMD,		
DATE - 03/25/2011		

SHEET NO. 183	F.A.I. RTE.	SECTION	COUNTY	TOTAL SHEETS	SHEET NO.
	55	0711.2R & 1011.1BR	COOK	741	507
239 SHEETS	CONTRACT NO. 60999				
FED. ROAD DIST. NO. 1 ILLINOIS FED. AID PROJECT					

5/9/2011 9:09:14 AM p:\01345\structure\C2_Central_Ave_016-0724\155644\Framed115.dgn