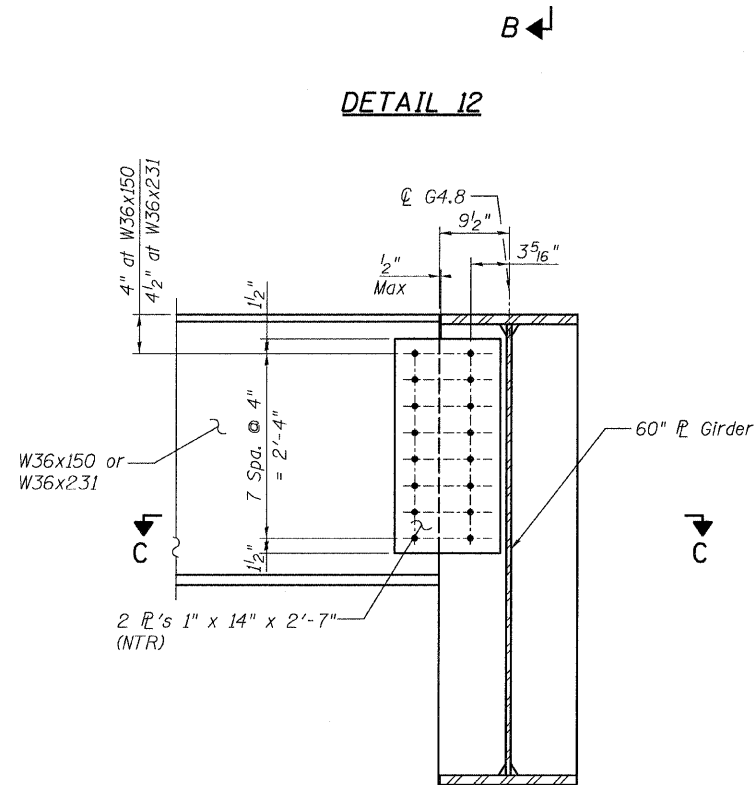
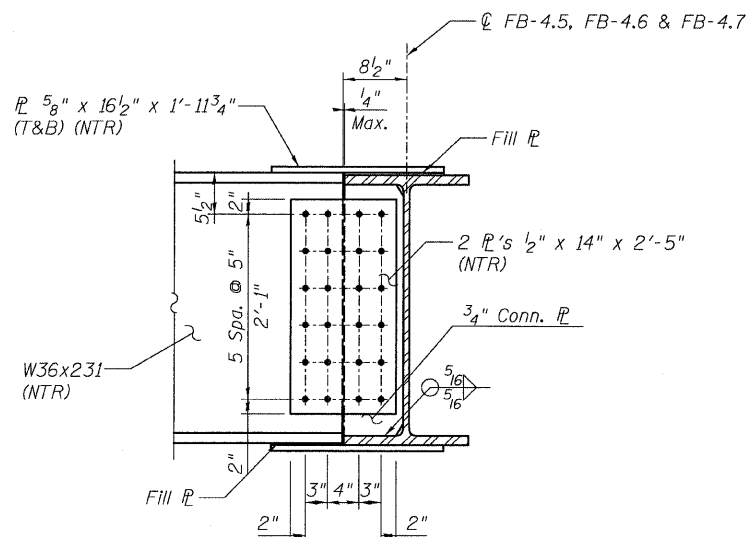
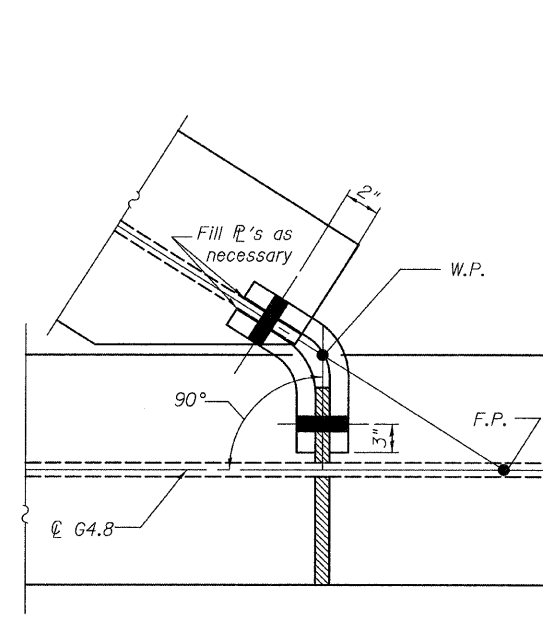
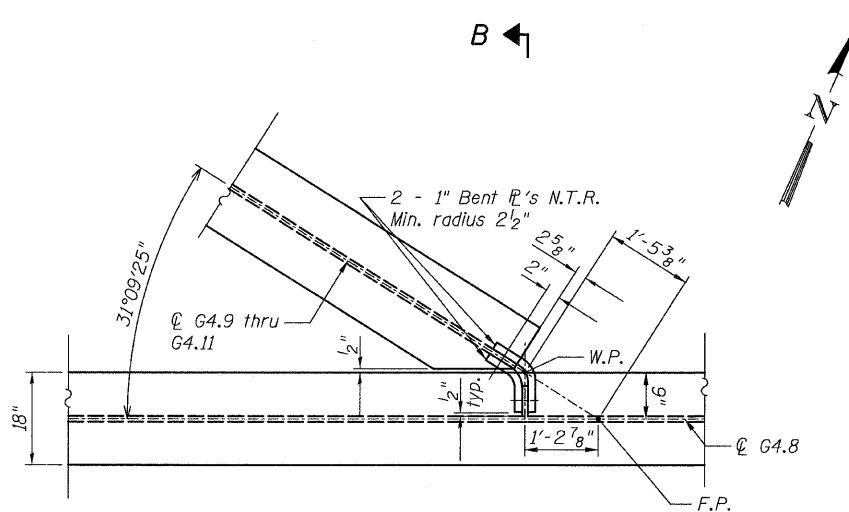
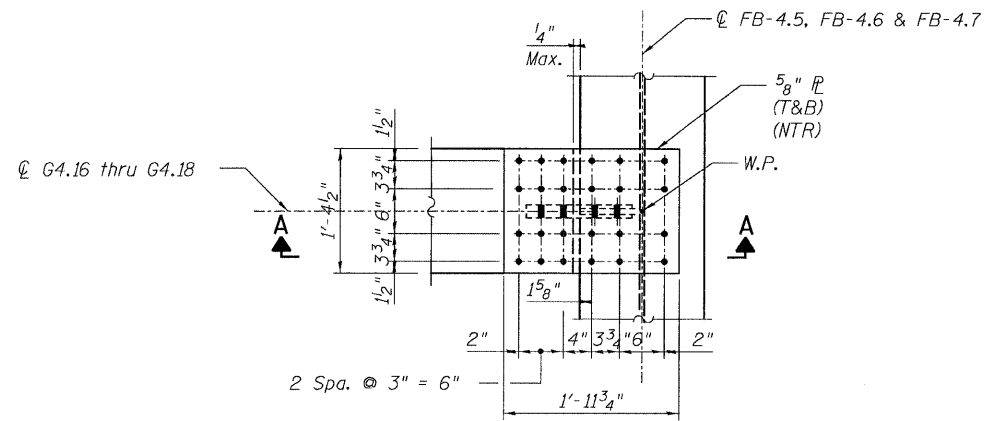


STATE OF ILLINOIS  
DEPARTMENT OF TRANSPORTATION



- NOTES:**
- All steel shall be AASHTO M270 Grade 50.
  - For Details 11 and 12 locations, see Sheet 97.
  - F.C. - denotes Fracture Critical Material, AASHTO Zone II.
  - Load carrying components designated "NTR" shall conform to the Supplemental Requirements for Notch Toughness, Zone 2.

**CONNECTION DETAILS 11&12  
RAMP 4 FLARE  
STRUCTURE NO. 106-0724**

<b>TYLIN INTERNATIONAL</b>	DESIGNED - EKH, JMA	REVISIONS	
	CHECKED - AMD,	NAME	DATE
	DRAWN - EKH, JMA		
	CHECKED - AMD,		
	DATE - 03/25/2011		

SHEET NO. 184	F.A.I. RTE.	SECTION	COUNTY	TOTAL SHEETS	SHEET NO.
	239 SHEETS	55	0711.2R & 1011.1BR	COOK	741
			CONTRACT NO. 60999		
FED. ROAD DIST. NO. 1 ILLINOIS FED. AID PROJECT					

5/9/2011 9:09:15 AM p:\01345\structure\02\_Central\_Ave\_016-0724\15564\Framed116.dgn