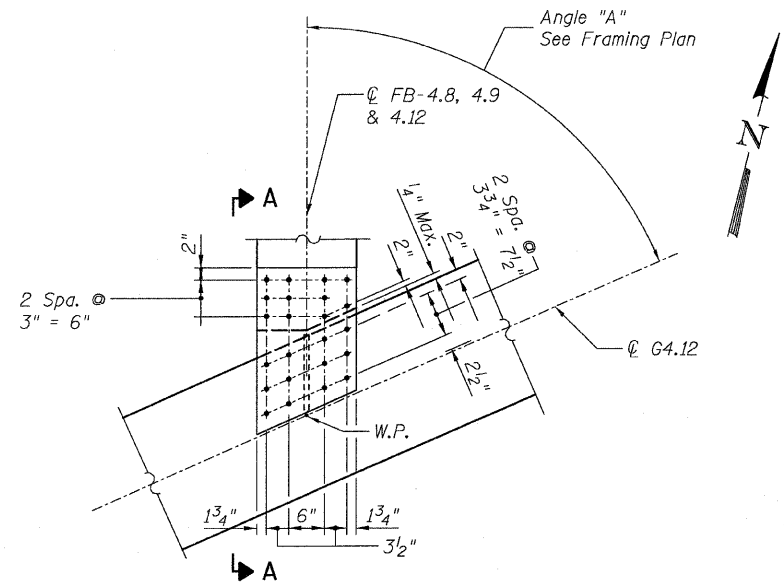
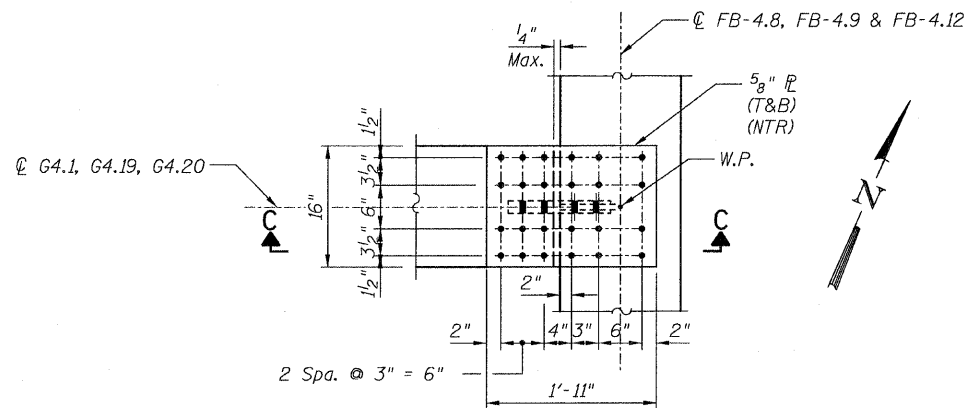


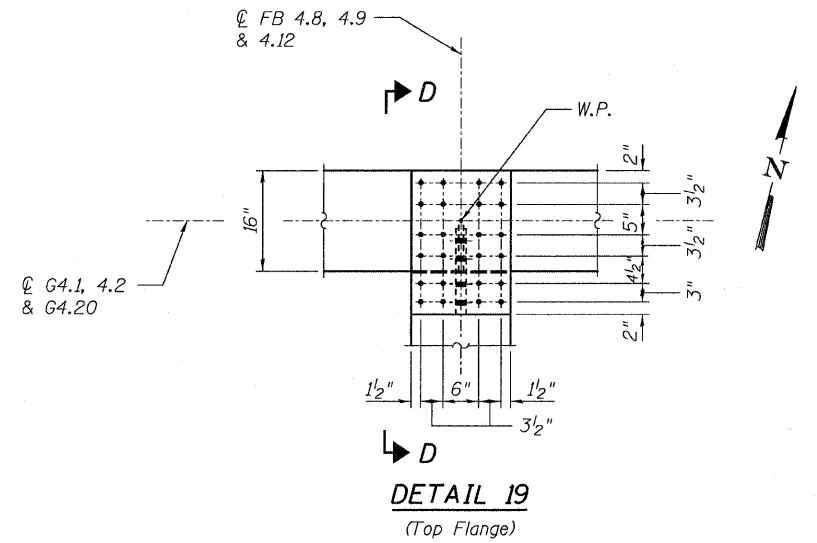
STATE OF ILLINOIS  
DEPARTMENT OF TRANSPORTATION



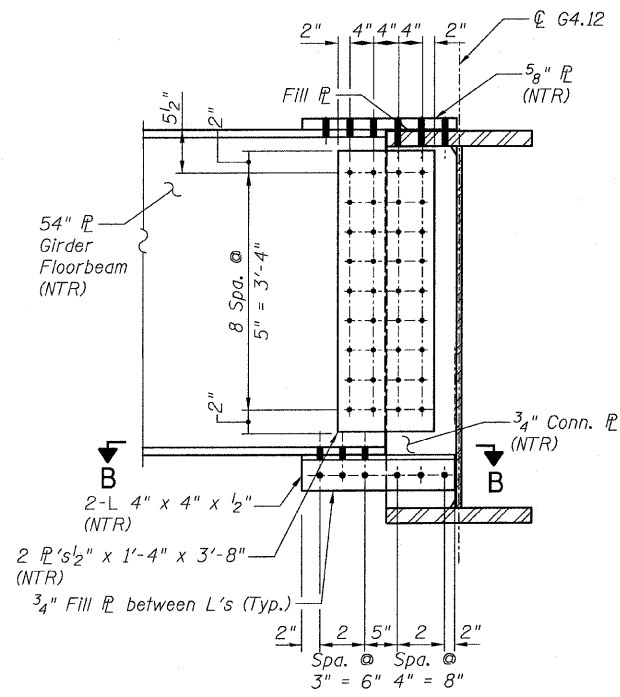
**DETAIL 17**  
(Top Flange)



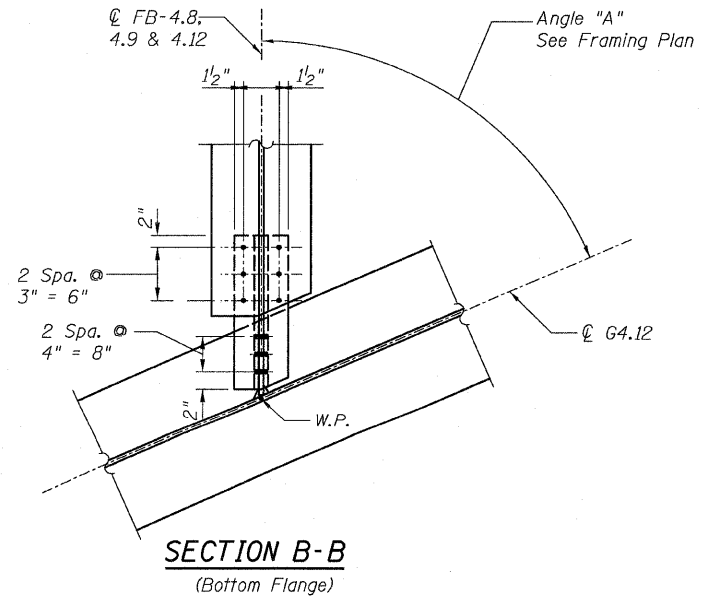
**DETAIL 18**  
(Top Flange)  
(Bottom flange is similar.)



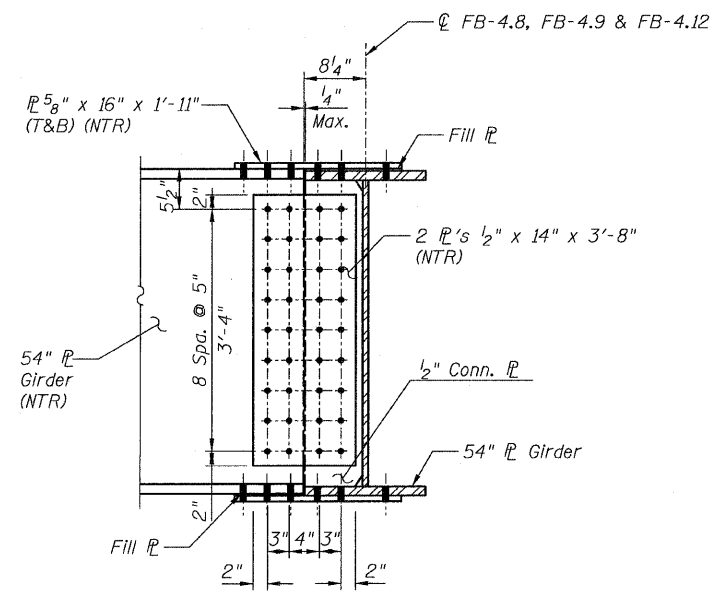
**DETAIL 19**  
(Top Flange)



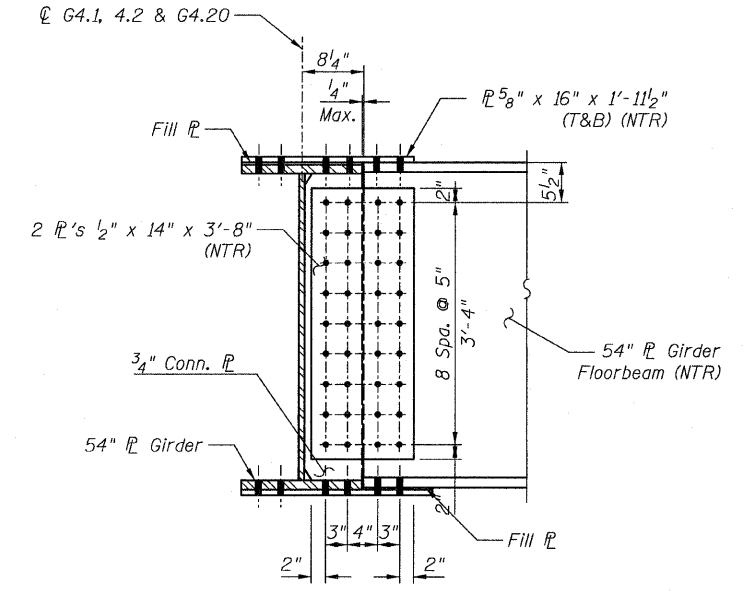
**SECTION A-A**



**SECTION B-B**  
(Bottom Flange)



**SECTION C-C**



**SECTION D-D**

- NOTES:**
- All steel shall be AASHTO M270 Grade 50.
  - For Details 17 and 18 locations, see Sheet 97.
  - Load carrying components designated "NTR" shall conform to the Supplemental Requirements for Notch Toughness, Zone 2.

**CONNECTION DETAILS 17, 18 & 19**  
**RAMP 4 FLARE**  
**STRUCTURE NO. 016-0724**

<b>TYLIN INTERNATIONAL</b>	DESIGNED - EKH, JMA	REVISIONS		SHEET NO. 187	F.A.I. RTE.	SECTION	COUNTY	TOTAL SHEETS	SHEET NO.	
	CHECKED - AMD,	NAME	DATE		239 SHEETS	55	0711.2R & 1011.1BR	COOK	741	511
	DRAWN - EKH, JMA				CONTRACT NO. 60999					
	CHECKED - AMD,				FED. ROAD DIST. NO. 1 ILLINOIS FED. AID PROJECT					
	DATE - 03/25/2011									

pi:\01345\structur\02\_Central\_Ave\_016-0724\15514\Framed118.dwg 4/28/2011 12:58:22 PM