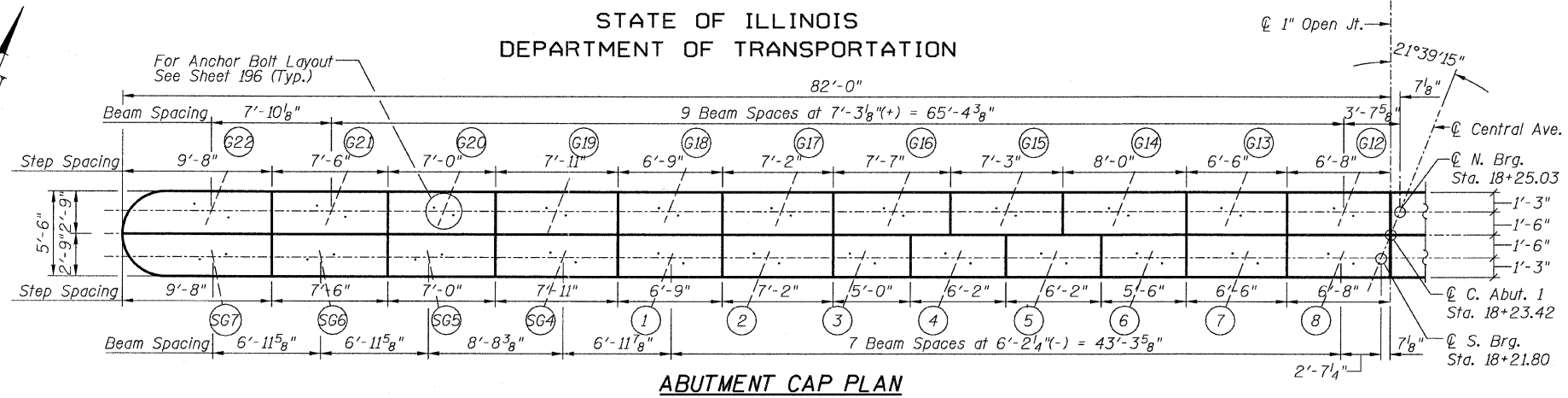


NOTES

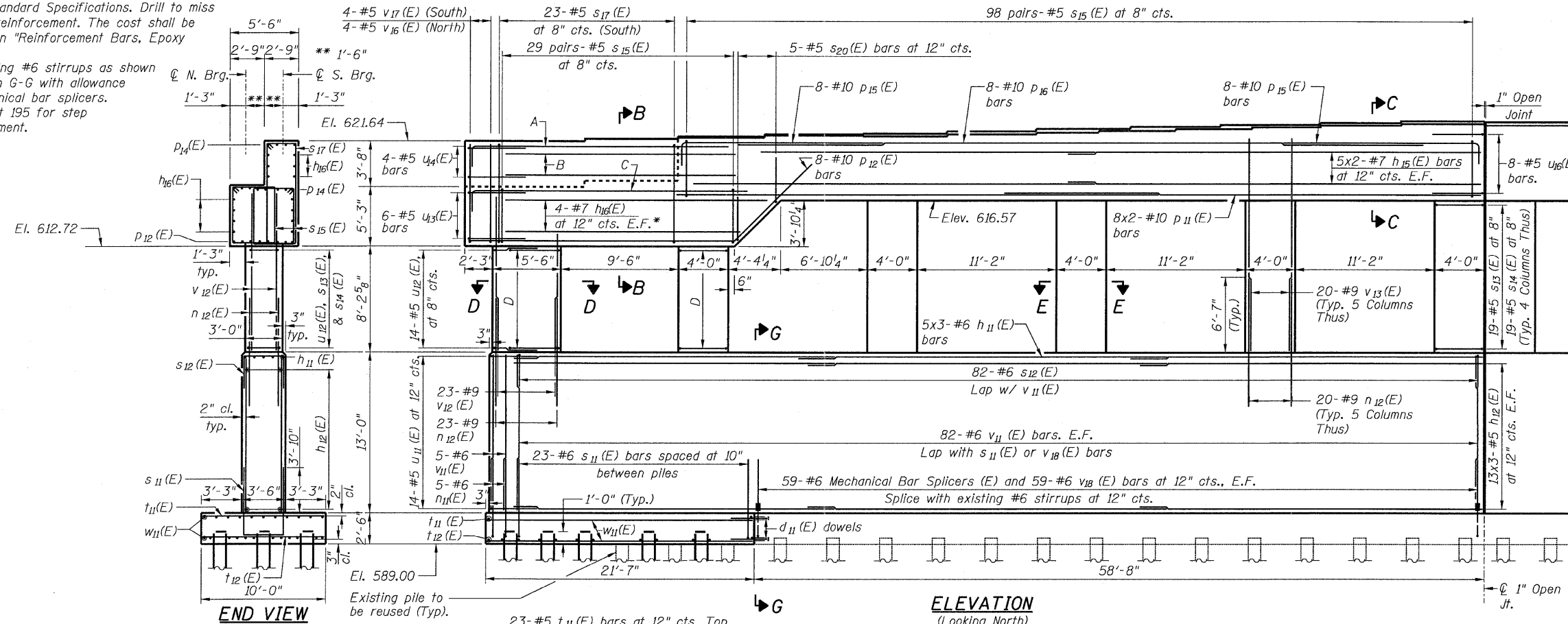
1. Bars indicated thus 8x2-#10 indicates 8 lines of bars with two lengths per line.
2. Space reinforcement in cap to miss anchor bolts.
3. Space reinforcement in footing to miss piles.
4. Pour steps monolithically with cap.
5. Pile capacity of existing 12" ϕ timber piles is 20 tons.
6. For Bill of Materials, see sheet 196.
7. Work this sheet with sheets 193, 195 & 196.
8. E.F - denotes Each Face.
9. Sand blast clean existing reinforcing bars to be incorporated into new construction. After cleaning, bars shall be evaluated to determine if additional reinforcing bars are required. Damaged or cut bars, or bars that have lost 25% or more of their original cross sectional area shall be supplemented by drilling and grouting into existing concrete. Cost included with "Concrete Removal".
10. Epoxy grout $d_{11}(E)$ bars according to Section 584 of the Standard Specifications. Drill to miss existing reinforcement. The cost shall be included in "Reinforcement Bars, Epoxy Coated."
11. Cut existing #6 stirrups as shown in Section G-G with allowance of mechanical bar splicers.
12. See Sheet 195 for step reinforcement.

STATE OF ILLINOIS
DEPARTMENT OF TRANSPORTATION



BRIDGE SEAT ELEVATIONS

South Bearings		North Bearings	
Girder Line	Seat Elevation	Girder Line	Seat Elevation
SG7	621.64	G22	617.97
SG6	621.89	G21	618.49
SG5	622.08	G20	621.82
SG4	622.14	G19	622.01
1	622.06	G18	622.21
2	622.20	G17	622.40
3	622.35	G16	622.60
4	622.49	G15	622.77
5	622.64	G14	622.93
6	622.79	G13	623.08
7	622.92	G12	623.24
8	623.07		

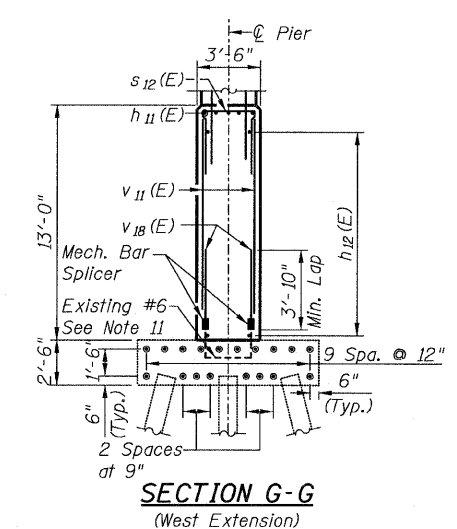
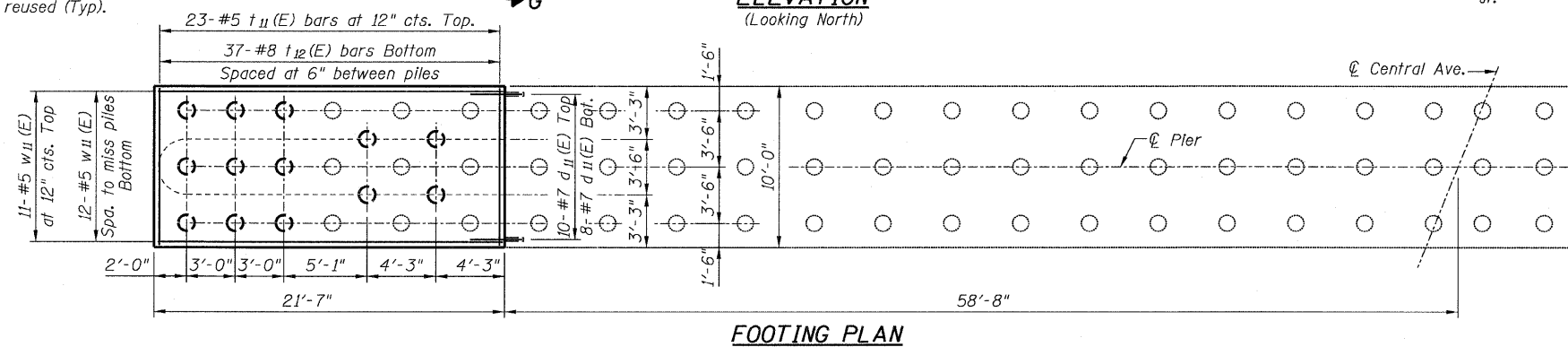


- * Cut to fit in field.
- A: 4- #10 $p_{14}(E)$ bars (South)
- B: 3- #7 $h_{16}(E)$ bars at 12" E.F. cts. (South)
- C: 8- #10 $p_{14}(E)$ bars
- D: 14- #5 $s_{13}(E)$ bars at 8" cts. 14- #5 $s_{14}(E)$ bars at 8" cts.

PILE DATA

Type: 12" ϕ x 0.25" Wall
Nominal Required Bearing: 270 kips
Allowable Resistance Available: 90 kips
Estimated Length: 44 ft
No. Production Piles: 12
No. Test Piles: 1

- (C) Proposed Pile
- (O) Existing Pile



**C. ABUT. I REP. & WID. - WEST
CENTAL/I-55
STRUCTURE NO. 016-0724**

TYLIN INTERNATIONAL	DESIGNED - MB	REVISIONS		SHEET NO. 194	F.A.I. RTE.	SECTION	COUNTY	TOTAL SHEETS	SHEET NO.
	CHECKED - AMD,	NAME	DATE		55	0711.2R & 1011.1BR	COOK	741	518
	DRAWN - MB				239 SHEETS	CONTRACT NO. 60999			
	CHECKED - AMD,					FED. ROAD DIST. NO. 1 ILLINOIS FED. AID PROJECT			
	DATE - 03/25/2011								