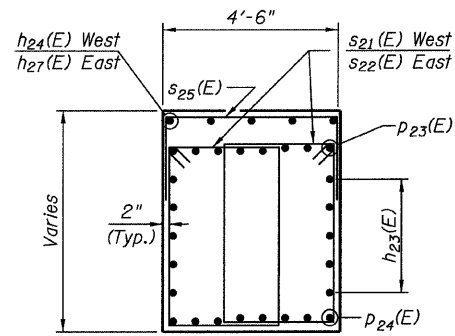


STATE OF ILLINOIS
DEPARTMENT OF TRANSPORTATION

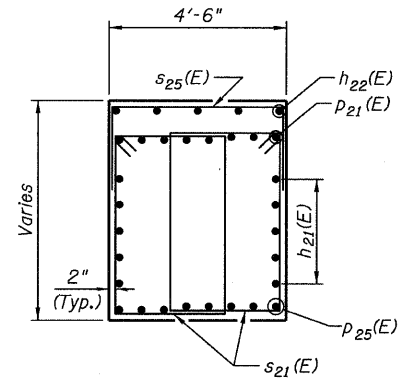
NOTES

1. Work this sheet with sheets 197 and 198.

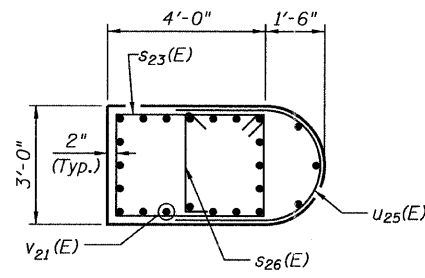
BILL OF MATERIAL



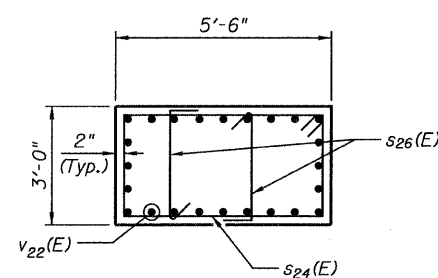
SECTION A-A



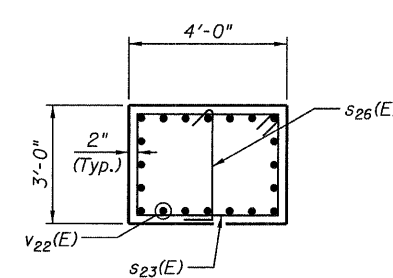
SECTION B-B



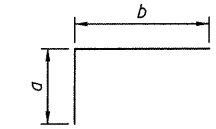
SECTION C-C



SECTION D-D

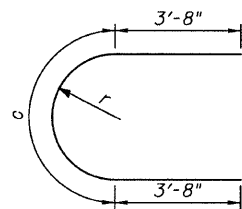


SECTION E-E



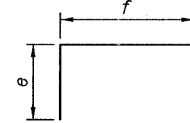
Bar	a	b
p21(E)	1'-10"	26'-7"
p22(E)	1'-10"	16'-2"
v23(E)	10"	5'-10"

BARS p21(E), p22(E) & v23(E)



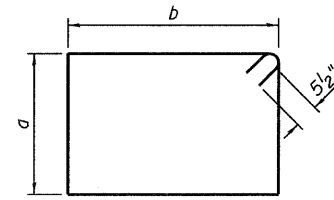
Bar	c	r
u21(E)	6'-7"	2'-1"
u23(E)	5'-0"	1'-7"
u25(E)	4'-2"	1'-4"

BARS u21(E), u23(E) & u25(E)



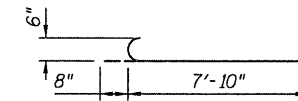
Bar	e	f
s25(E)	3'-6"	4'-2"
s27(E)	7'-7"	3'-2"
s28(E)	6'-4"	3'-2"
s29(E)	5'-3"	5'-2"
u22(E)	3'-8"	4'-2"
u24(E)	3'-8"	3'-2"

BARS s25(E), s27(E), s28(E), s29(E), u22(E) & u24(E)

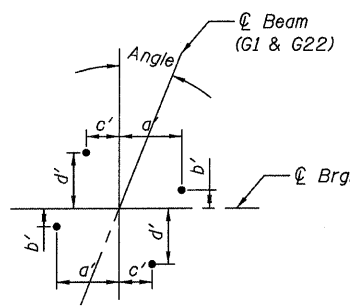


Bar	a	b
s21(E)	5'-8"	2'-9"
s22(E)	6'-4"	2'-9"
s23(E)	2'-8"	3'-8"
s24(E)	2'-8"	5'-2"

BARS s21(E) thru s24(E)

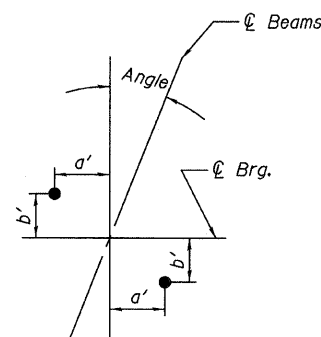


BAR n22(E)



ANCHOR BOLT LAYOUT

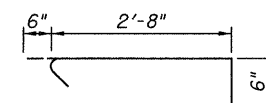
Beam	Angle	a'	b'	c'	d'
G1 & G22	21°39'15"	1'-5 5/8"	3"	10 3/4"	1'-2 1/4"



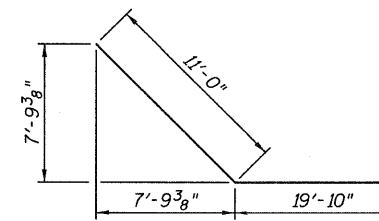
ANCHOR BOLT LAYOUT

Beam	Angle	a'	b'
G2 & G21	21°39'15"	11 3/8"	4 1/2"
G3 thru G20	21°39'15"	9 1/2"	3 3/4"

MINIMUM LAP	
#5	3'-8"
#6	4'-5"
#10	12'-4"



BARS s26(E)



BARS p25(E)

Bar	No.	Size	Length	Shape
h21(E)	20	#5	23'-8"	
h22(E)	10	#5	8'-3"	
h23(E)	40	#5	35'-0"	
h24(E)	10	#5	27'-1"	
h25(E)	5	#5	14'-2"	
h27(E)	10	#5	35'-11"	
h28(E)	56	#5	41'-4"	
h29(E)	20	#6	41'-7"	
n21(E)	254	#9	10'-8"	
n22(E)	10	#6	8'-6"	
p21(E)	16	#10	28'-5"	
p22(E)	32	#10	18'-0"	
p23(E)	16	#10	58'-10"	
p24(E)	32	#10	39'-0"	
p25(E)	16	#10	30'-10"	
s21(E)	360	#5	17'-9"	
s22(E)	160	#5	19'-1"	
s23(E)	198	#5	13'-7"	
s24(E)	30	#5	16'-7"	
s25(E)	156	#5	11'-2"	
s26(E)	258	#5	3'-8"	
s27(E)	162	#6	18'-4"	
s28(E)	162	#6	15'-10"	
s29(E)	9	#5	15'-8"	
t21(E)	171	#6	13'-2"	
t22(E)	289	#9	13'-2"	
u21(E)	14	#5	13'-11"	
u22(E)	16	#5	11'-6"	
u23(E)	16	#5	12'-4"	
u24(E)	16	#5	10'-6"	
u25(E)	30	#5	11'-6"	
v21(E)	46	#9	13'-9"	
v22(E)	208	#9	17'-1"	
v23(E)	16	#5	6'-8"	
w21(E)	124	#6	44'-5"	
Test Pile Metal Shells	Each		2	
Structure Excavation	Cu Yd		728	
Concrete Structures	Cu Yd		737.2	
Reinforcement Bars, Epoxy Coated	Pound		96,270	
Furnishing Metal Pile Shells 12"x0.25"	Foot		6,300	
Driving Piles	Foot		6,300	
Concrete Sealer	Sq Ft		7,796	
Pile Extraction	Each		41	
Bar Splitters	Each		31	

C. ABUT. 2 - DETAILS
CENTRAL/I-55
STRUCTURE NO. 016-0724

TYLIN INTERNATIONAL	DESIGNED - MB	REVISIONS		SHEET NO. 199	F.A.I. RTE.	SECTION	COUNTY	TOTAL SHEETS	SHEET NO.
	CHECKED - AMD,	NAME	DATE		55	0711.2R & 1011.1BR	COOK	741	523
	DRAWN - MB				239 SHEETS	CONTRACT NO. 60999			
	CHECKED - AMD,					FED. ROAD DIST. NO. 1 ILLINOIS FED. AID PROJECT			
	DATE - 03/25/2011								

5/9/2011 9:23 AM
pi:\01345\structure\02_Central_Ave_016-0724\155c2abur24tl.dgn