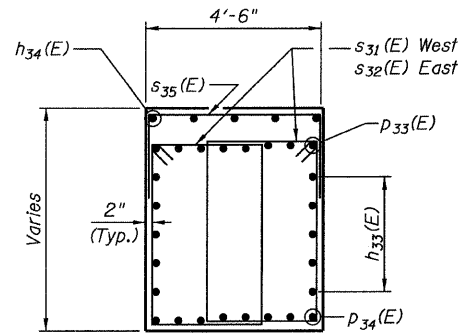


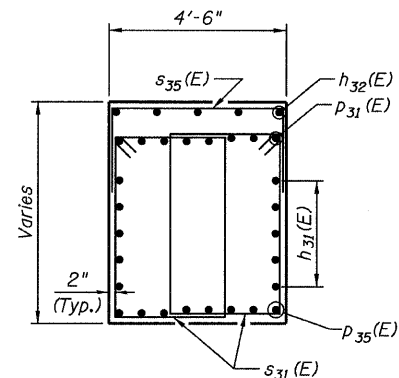
STATE OF ILLINOIS  
DEPARTMENT OF TRANSPORTATION

NOTES

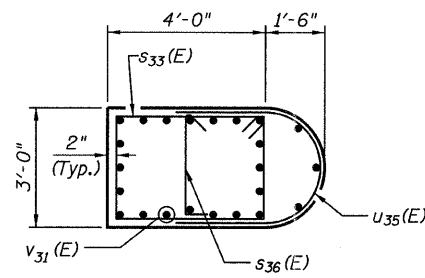
1. Work this sheet with sheets 200 and 201.



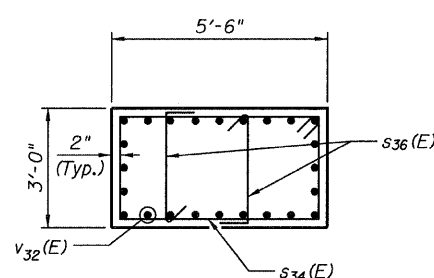
SECTION A-A



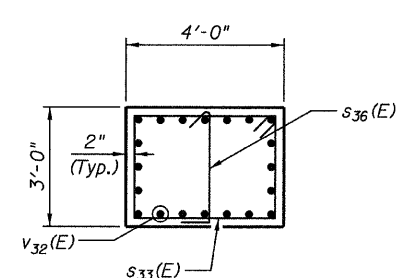
SECTION B-B



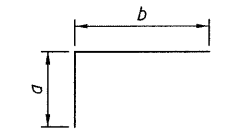
SECTION C-C



SECTION D-D

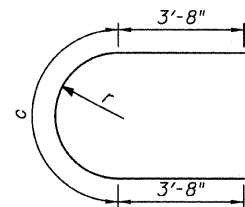


SECTION E-E



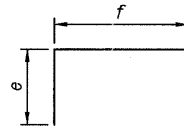
Bar	a	b
p31(E)	1'-10"	26'-7"
p32(E)	1'-10"	16'-2"
v33(E)	10"	5'-10"

BARS p31(E), p32(E) & v33(E)



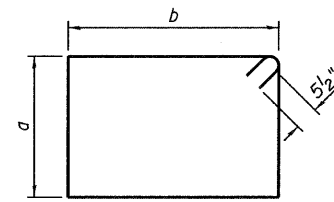
Bar	c	r
u31(E)	6'-7"	2'-1"
u33(E)	5'-0"	1'-7"
u35(E)	4'-2"	1'-4"

BARS u31(E), u33(E) & u35(E)



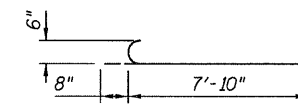
Bar	e	f
s35(E)	3'-6"	4'-2"
s37(E)	7'-7"	3'-2"
s38(E)	6'-4"	3'-2"
s39(E)	5'-3"	5'-2"
u32(E)	3'-8"	4'-2"
u34(E)	3'-8"	3'-2"

BARS s35(E), s37(E), s38(E),  
s39(E), u32(E) & u34(E)

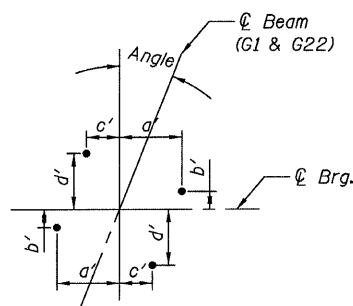


Bar	a	b
s31(E)	5'-8"	2'-9"
s32(E)	5'-11"	2'-9"
s33(E)	2'-8"	3'-8"
s34(E)	2'-8"	5'-2"

BARS s31(E) thru s34(E)

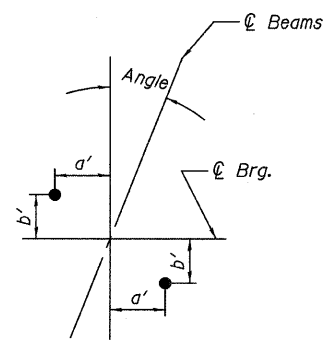


BAR n32(E)



ANCHOR BOLT LAYOUT

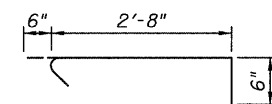
Beam	Angle	a'	b'	c'	d'
G1 & G22	21°39'15"	1'-5 5/8"	3"	10 3/4"	1'-2 1/4"



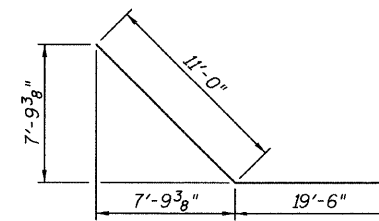
ANCHOR BOLT LAYOUT

Beam	Angle	a'	b'
G2 & G21	21°39'15"	11 3/8"	4 1/2"
G3 thru G20	21°39'15"	9 1/2"	3 3/4"

MINIMUM LAP	
#5	3'-8"
#6	4'-5"
#10	12'-4"



BARS s36(E)



BARS p35(E)

BILL OF MATERIAL

Bar	No.	Size	Length	Shape
h31(E)	20	#5	23'-8"	—
h32(E)	10	#5	8'-3"	—
h33(E)	40	#5	35'-0"	—
h34(E)	10	#5	43'-2"	—
h35(E)	5	#5	21'-5"	—
h36(E)	56	#5	41'-4"	—
h37(E)	20	#6	41'-7"	—
h38(E)	5	#5	14'-2"	—
n31(E)	254	#9	10'-8"	—
n32(E)	10	#6	8'-6"	—
p31(E)	16	#10	28'-5"	—
p32(E)	32	#10	18'-0"	—
p33(E)	16	#10	58'-10"	—
p34(E)	32	#10	39'-0"	—
p35(E)	16	#10	30'-6"	—
s31(E)	360	#5	17'-9"	—
s32(E)	160	#5	18'-3"	—
s33(E)	218	#5	13'-7"	—
s34(E)	34	#5	16'-7"	—
s35(E)	143	#5	11'-2"	—
s36(E)	286	#5	3'-8"	—
s37(E)	162	#6	18'-4"	—
s38(E)	162	#6	15'-10"	—
s39(E)	10	#5	15'-8"	—
t31(E)	171	#6	13'-2"	—
t32(E)	289	#9	13'-2"	—
u31(E)	14	#5	13'-11"	—
u32(E)	16	#5	11'-6"	—
u33(E)	16	#5	12'-4"	—
u34(E)	16	#5	10'-6"	—
u35(E)	34	#5	11'-6"	—
v31(E)	46	#9	14'-10"	—
v32(E)	208	#9	18'-8"	—
v33(E)	16	#5	6'-8"	—
w31(E)	124	#6	44'-5"	—
Test Pile Metal Shells	Each		2	
Structure Excavation	Cu Yd		728	
Concrete Structures	Cu Yd		742.3	
Reinforcement Bars, Epoxy Coated	Pound		97,700	
Furnishing Metal Pile Shells 12"x0.25"	Foot		6,316	
Driving Piles	Foot		6,316	
Concrete Sealer	Sq Ft		8,012	
Pile Extraction	Each		41	
Bar Splicers	Each		31	

C. ABUT. 3 - DETAILS  
CENTRAL/I-55  
STRUCTURE NO. 016-0724

TYLIN INTERNATIONAL	DESIGNED - MB	REVISIONS		SHEET NO. 202	F.A.I. RTE.	SECTION	COUNTY	TOTAL SHEETS	SHEET NO.					
	CHECKED - AMD,	NAME	DATE							55	0711.2R & 1011.1BR	COOK	741	526
	DRAWN - MB									CONTRACT NO. 60999				
	CHECKED - AMD,									FED. ROAD DIST. NO. 1 ILLINOIS FED. AID PROJECT				
	DATE - 03/25/2011			239 SHEETS										