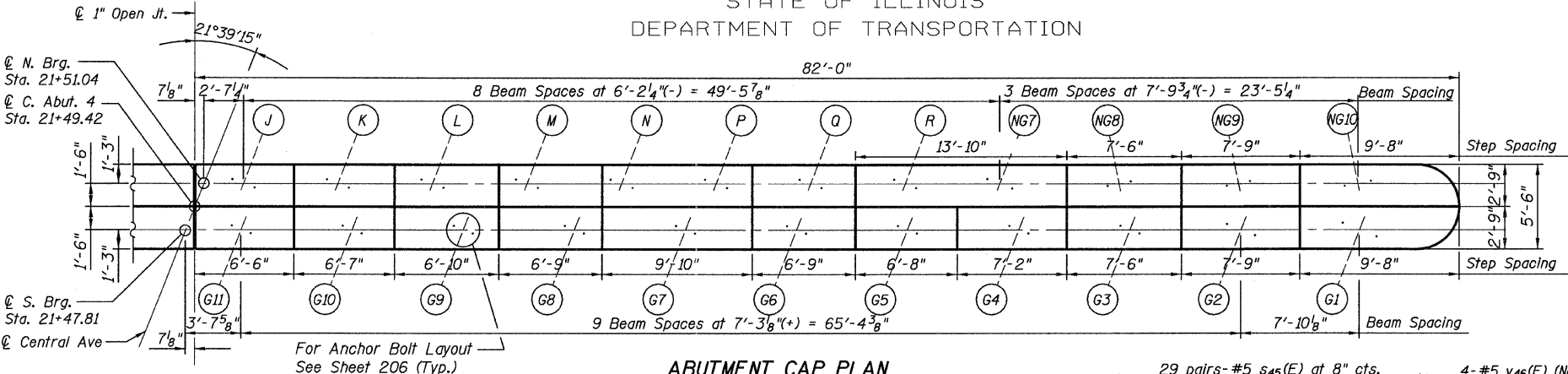


STATE OF ILLINOIS
DEPARTMENT OF TRANSPORTATION

BRIDGE SEAT ELEVATIONS

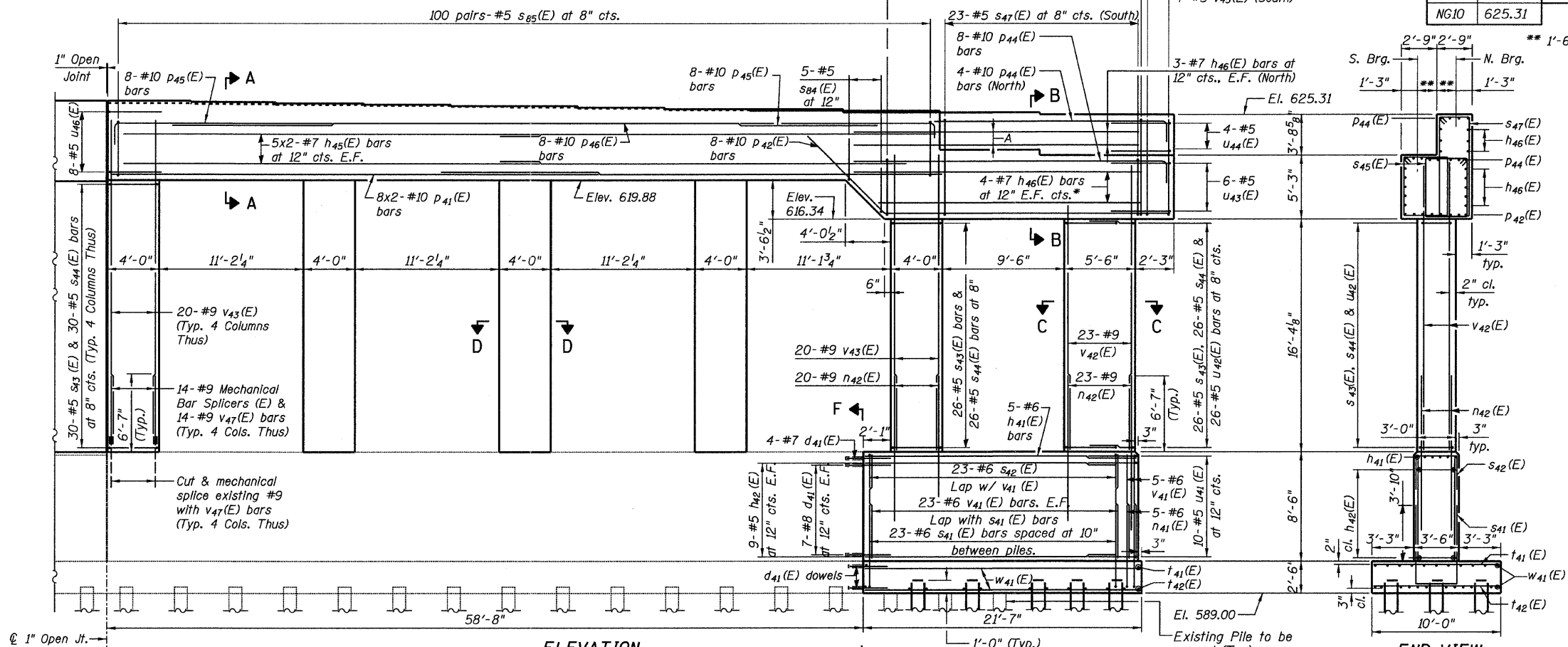
NOTES

- Bars indicated thus 8x2-#10 indicates 8 lines of bars with two lengths per line.
- Space reinforcement in cap to miss anchor bolts.
- Space reinforcement in footing to miss piles.
- Four steps monolithically with cap.
- Pile capacity of existing 12" φ timber piles is 20 tons.
- For Bill of Materials, see sheet 206.
- Work this sheet with sheets 204, 205 & 206.
- Sand blast clean existing reinforcing bars to be incorporated into new construction. After cleaning, bars shall be evaluated to determine if additional reinforcing bars are required. Damaged or cut bars, or bars that have lost 25% or more of their original cross sectional area shall be supplemented by drilling and grouting into existing concrete. Cost included with "Concrete Removal".
- Epoxy grout d₄₁(E) bars according to Section 584 of the Standard Specifications. Drill to miss existing reinforcement. The epoxy grout and the method application shall be approved by the Engineer. The cost shall be included in "Reinforcement Bars, Epoxy Coated."
- E.F. - denotes Each Face.
- See sheet 205 for step reinforcement.

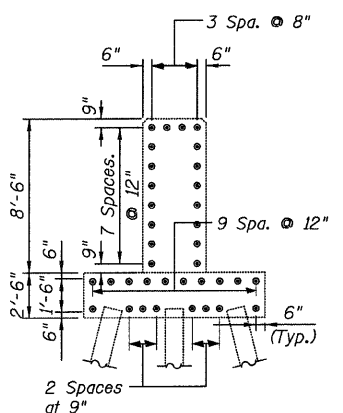


North Bearings		South Bearings	
Girder Line	Seat Elevation	Girder Line	Seat Elevation
J	626.05	G11	626.18
K	625.98	G10	626.10
L	625.92	G9	626.01
M	625.83	G8	625.91
N	625.73	G7	625.81
P	625.73	G6	625.68
Q	625.62	G5	625.56
R	625.50	G4	625.43
NG7	625.50	G3	625.31
NG8	625.62	G2	622.05
NG9	625.48	G1	621.59
NG10	625.31		

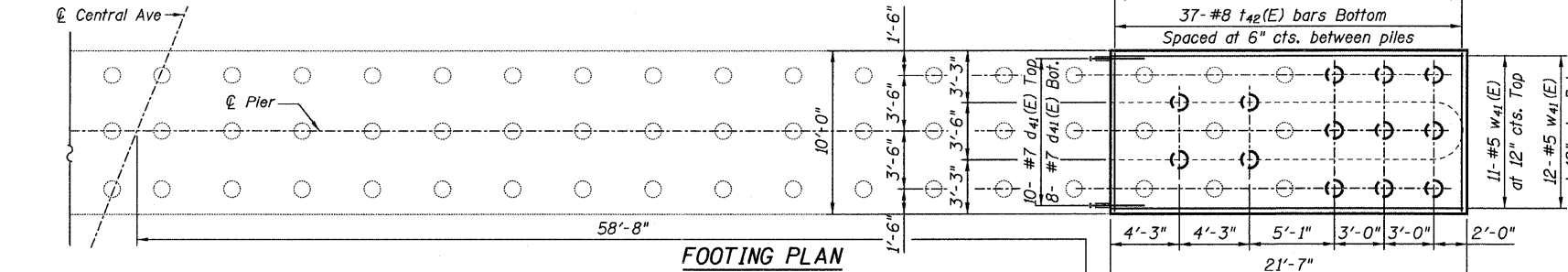
ABUTMENT CAP PLAN



ELEVATION
(Looking North)



SECTION F-F
(East Extension)



FOOTING PLAN



END VIEW
(East Extension)

PILE DATA

Type: 12" φ x 0.25" Wall
Nominal Required Bearing: 270 kips
Allowable Resistance Available: 90 kips
Estimated Length: 42 ft
No. Production Piles: 12
No. Test Piles: 1

- (C) Proposed Pile
- (O) Existing Pile

C. ABUT. 4 REPL. & WID.-EAST
CENTRAL/I-55
STRUCTURE NO. 016-0724

TYLIN INTERNATIONAL

DESIGNED	REVISIONS	NAME	DATE
MB			
AMD			
MB			
AMD			
03/25/2011			

SHEET NO. 203	F.A.I. RTE.	SECTION	COUNTY	TOTAL SHEETS	SHEET NO.
	55	0711.2R & 1011.1BR	COOK	741	527
239 SHEETS	CONTRACT NO. 60999				
	FED. ROAD DIST. NO. 1 ILLINOIS FED. AID PROJECT				

4/25/23 PM 01:34:53\structure\2_Central_Ave_016-0724\1562abut4a.dgn