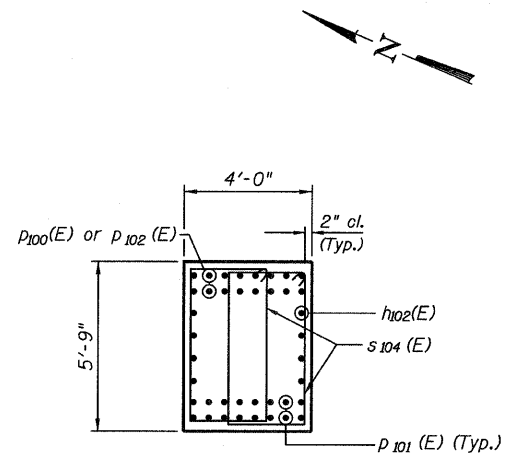
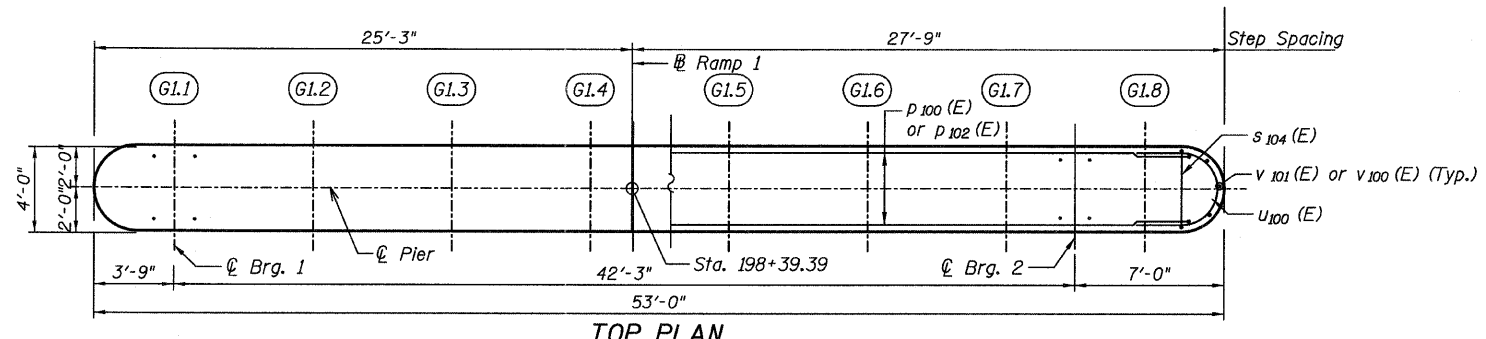


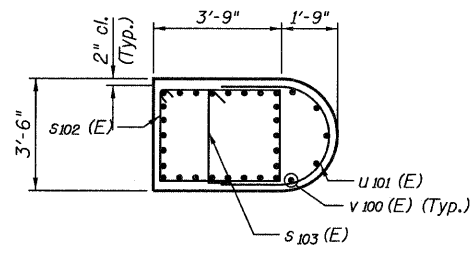
STATE OF ILLINOIS  
DEPARTMENT OF TRANSPORTATION

**NOTES**

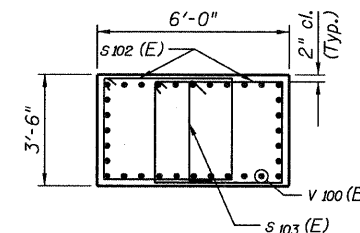
1. Bars indicated thus 5x2-#11 indicates 5 lines of bars with two lengths per line.
2. Space reinforcement in cap to miss anchor bolts.
3. Space reinforcement in footing to miss piles.
4. Pour steps monolithically with cap.
5. For Bill of Materials, see sheet 213.
6. E.F. - denotes Each Face.



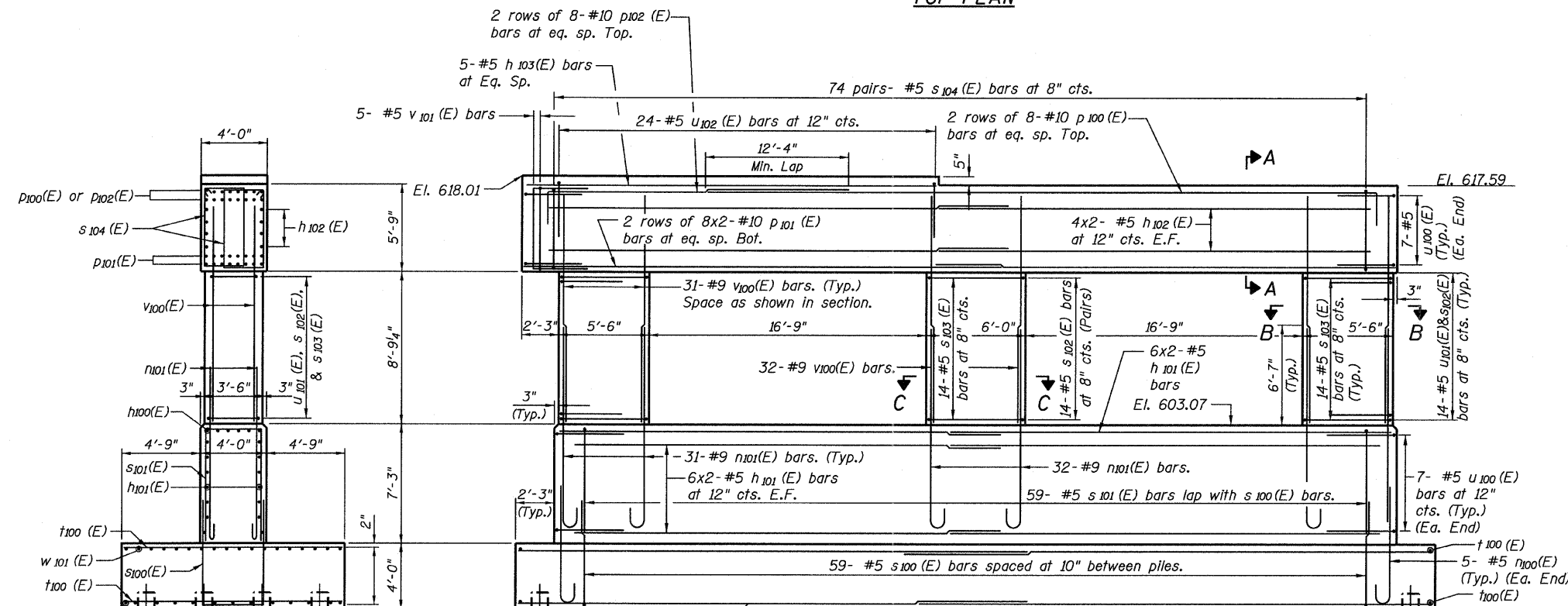
**SECTION A-A**



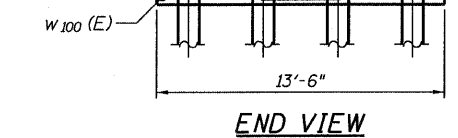
**SECTION B-B**



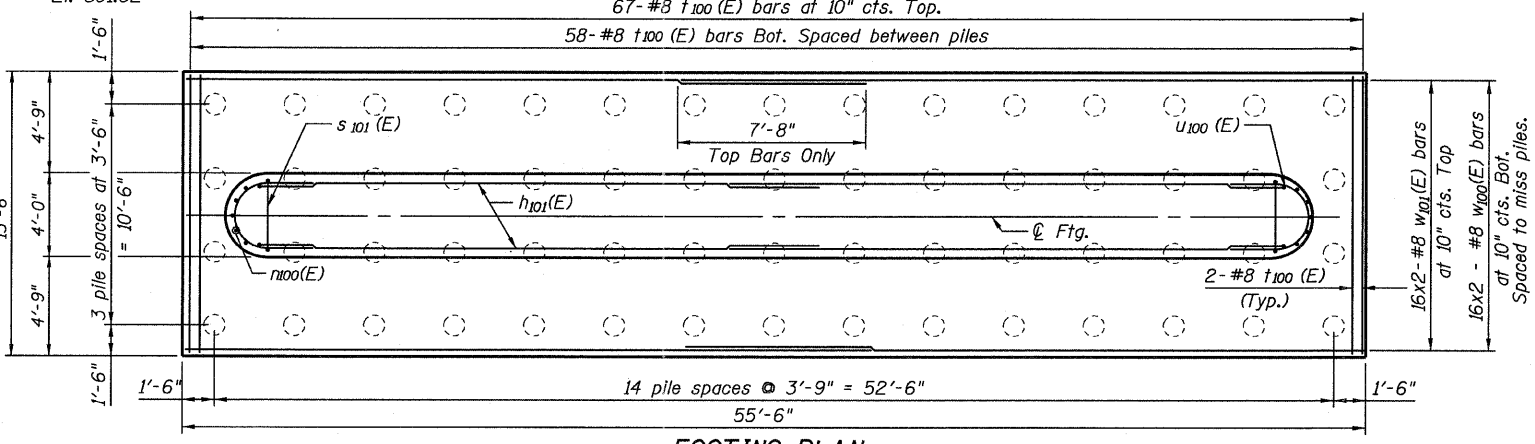
**SECTION C-C**



**ELEVATION**  
(Looking East)



**END VIEW**



**FOOTING PLAN**

**PILE DATA**

Type: 12"  $\phi$  x 0.25" wall.  
Nominal Required Bearings: 270 kips  
Allowable Resistance Available: 90 kips  
Estimated Length: 40'  
No. Production Piles: 59  
No. Test Piles: 1

**MINIMUM BAR LAPS**

(Unless Noted Otherwise)

Bar Size	Min. Lap
#5	3'-3"
#7	5'-2"
#8	6'-9"
#10	10'-10"

**RAMP 1 PIER  
STRUCTURE NO. 016-0724**

<b>TYLIN INTERNATIONAL</b>	DESIGNED - EKH	REVISIONS		SHEET NO. 212	F.A.I. RTE.	SECTION	COUNTY	TOTAL SHEETS	SHEET NO.
	CHECKED - AMD,	NAME	DATE		55	0711.2R & 1011.1BR	COOK	741	536
	DRAWN - EKH				239 SHEETS	CONTRACT NO. 60999			
	CHECKED - AMD,					FED. ROAD DIST. NO. 1 ILLINOIS FED. AID PROJECT			
	DATE - 03/25/2011								

pi:\01345\structur\c2 Central Ave. 016-0724\155-1.pierm4.dgn 4/28/2011 11:28:20 PM