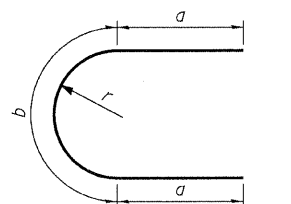
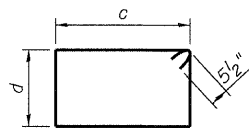


STATE OF ILLINOIS
DEPARTMENT OF TRANSPORTATION



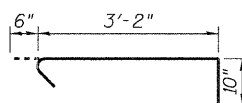
Bar	a	b	r
u ₂₀₀ (E)	3'-3"	5'-9"	1'-10"
u ₂₀₁ (E)	3'-3"	5'-0"	1'-7"

BARS u₂₀₀(E) & u₂₀₁(E)

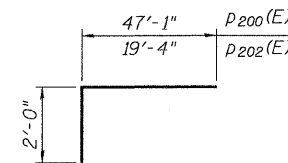


Bar	c	d
s ₂₀₂ (E)	3'-2"	3'-5"
s ₂₀₄ (E)	3'-8"	2'-6"

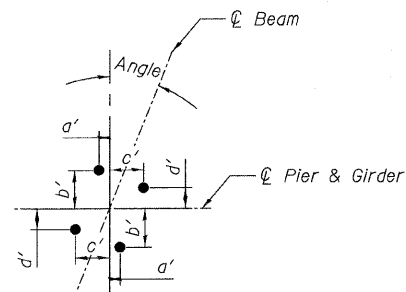
BARS s₂₀₂(E) & s₂₀₄(E)



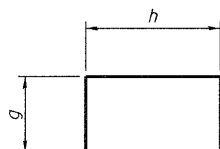
BAR s₂₀₃(E)



BARS p₂₀₀(E) & p₂₀₂(E)

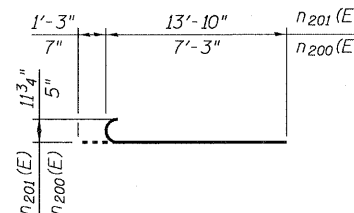


ANCHOR BOLT LAYOUT



Bar	g	h
s ₂₀₀ (E)	7'-3"	3'-8"
s ₂₀₁ (E)	6'-11"	3'-8"
u ₂₀₂ (E)	2'-0"	3'-4"
v ₂₀₁ (E)	10"	5'-5"

BARS s₂₀₀(E), s₂₀₁(E),
u₂₀₂(E) & v₂₀₁(E)



BARS n₂₀₀(E) & n₂₀₁(E)

BILL OF MATERIAL

Bar	No.	Size	Length	Shape
n ₂₀₁ (E)	36	#5	27'-0"	—
n ₂₀₂ (E)	16	#5	28'-0"	—
n ₂₀₃ (E)	5	#5	26'-2"	—
n ₂₀₀ (E)	10	#5	7'-10"	—
n ₂₀₁ (E)	94	#9	15'-1"	—
p ₂₀₀ (E)	16	#10	49'-1"	—
p ₂₀₁ (E)	32	#10	33'-0"	—
p ₂₀₂ (E)	16	#10	21'-4"	—
s ₂₀₀ (E)	59	#5	18'-2"	—
s ₂₀₁ (E)	59	#5	17'-6"	—
s ₂₀₂ (E)	60	#5	14'-1"	—
s ₂₀₃ (E)	45	#5	4'-6"	—
s ₂₀₄ (E)	148	#5	13'-3"	—
t ₂₀₀ (E)	129	#8	13'-2"	—
u ₂₀₀ (E)	28	#5	12'-3"	—
u ₂₀₁ (E)	30	#5	11'-6"	—
u ₂₀₂ (E)	25	#5	7'-4"	—
v ₂₀₀ (E)	94	#9	14'-11"	—
v ₂₀₁ (E)	5	#5	7'-1"	—
w ₂₀₀ (E)	32	#8	31'-0"	—
w ₂₀₁ (E)	32	#8	31'-5"	—
Test Pile Metal Shells	Each		1	
Structure Excavation	Cu Yd		277	
Concrete Structures	Cu Yd		228.0	
Reinforcement Bars, Epoxy Coated	Pound		36,830	
Furnishing Metal Shell Piles 12" x 0.25"	Foot		2,537	
Driving Piles	Foot		2,537	

RAMP 2 PIER DETAILS
STRUCTURE NO. 016-0724

Location	Angle	a'	b'	c'	d'
BRG. 1	00°00'00"	11 1/2"	1'-5 1/2"	11 1/2"	1'-5 1/2"
BRG. 2	00°00'00"	8 1/4"	1'-4 1/4"	8 1/4"	1'-4 1/4"

TYLIN INTERNATIONAL	DESIGNED - EKH	REVISIONS		SHEET NO. 216	F.A.I. RTE. 55	SECTION 0711.2R & 1011.1BR	COUNTY COOK	TOTAL SHEETS 741	SHEET NO. 540
	CHECKED - AMD,	NAME	DATE						
	DRAWN - EKH								
	CHECKED - AMD,								
DATE - 03/25/2011			239 SHEETS	CONTRACT NO. 60999					
FED. ROAD DIST. NO. 1 ILLINOIS FED. AID PROJECT									