

STATE OF ILLINOIS  
DEPARTMENT OF TRANSPORTATION

BRIDGE SEAT  
ELEVATIONS

Beam	Elevation
G3.12	618.06
G3.2	619.75
G3.3	619.65
G3.4	619.55
G3.5	619.45
G3.6	619.36
G3.7	619.26
G3.8	619.16

RAMP 3 ABUTMENT  
BILL OF MATERIAL

Bar	No.	Size	Length	Shape
$h_{104}(E)$	12	#5	25'-5"	—
$h_{105}(E)$	10	#6	25'-7"	—
$h_{106}(E)$	6	#5	22'-10"	—
$h_{107}(E)$	3	#5	19'-2"	—
$p_{100}(E)$	16	#8	26'-7"	—
$s_{100}(E)$	80	#4	19'-5"	□
$u_{100}(E)$	8	#6	10'-10"	—
$u_{101}(E)$	66	#5	9'-8"	—
$v_{100}(E)$	49	#5	3'-10"	—
$v_{101}(E)$	49	#4	3'-9"	—
$v_{106}(E)$	49	#6	5'-10"	—
$v_{107}(E)$	49	#6	7'-10"	—
Structure Excavation			Cu. Yd.	123.7
Concrete Structures			Cu. Yd.	69.2
Reinforcement Bars, Epoxy Coated			Pound	4860
Furnishing Metal Shell Piles 12"x 0.25"			Foot	1,197
Driving Piles			Foot	1,197
Test Pile Metal Shells			Each	1
Concrete Sealer			Sq. Ft.	701
Pile Extraction			Each	4

MINIMUM BAR LAPS

Bar	Lap
#4	1'-9"
#5	2'-2"
#6	2'-7"
#6	3'-7" (Top)
#7	3'-5"
#7	4'-10" (Top)
#8	4'-6"

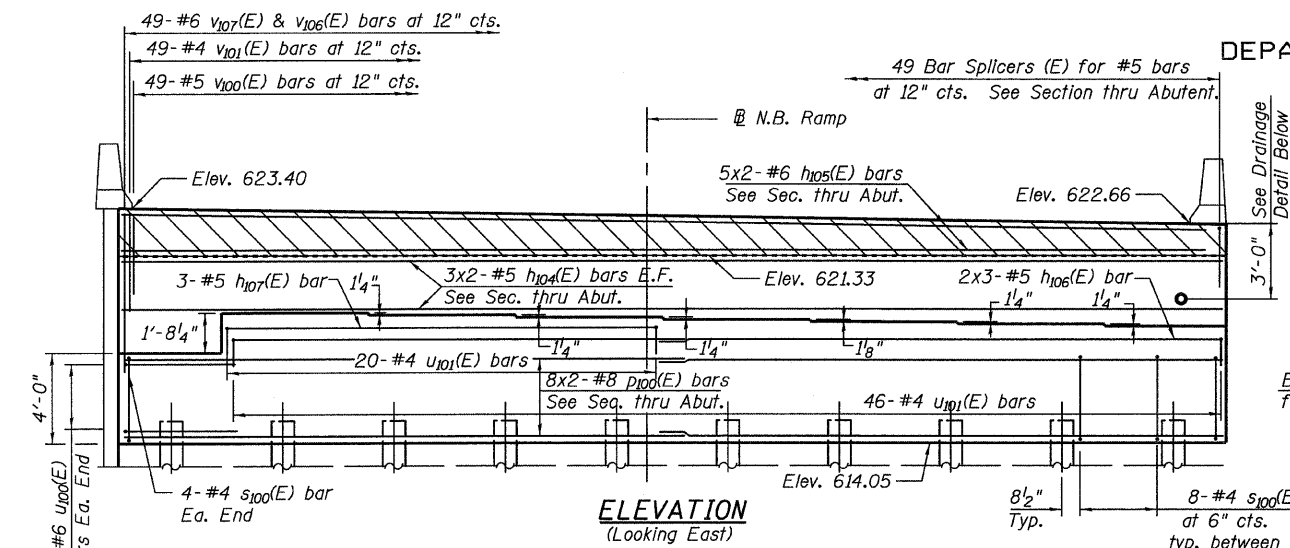
For details of Bar Splicers, see sheet 224 of 239.

PILE DATA

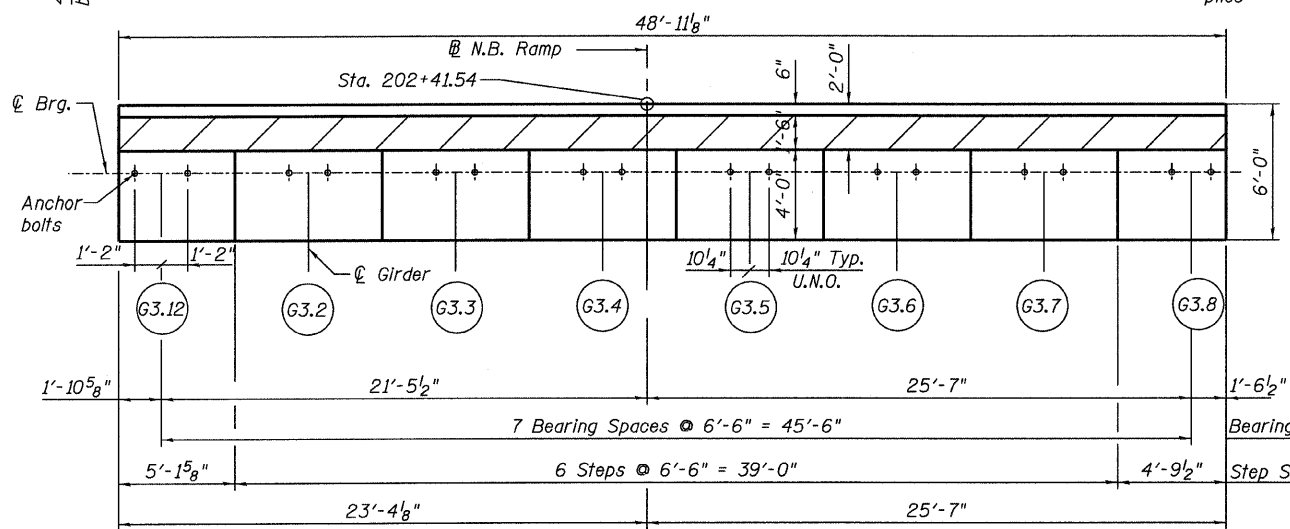
Type: Metal Shell 12"  $\phi$  x 0.25" wall.  
 Nominal Required Bearing: 270 kips  
 Factored Resistance Available: 90 kips  
 Est. Length: 63'  
 No. Production Piles: 19  
 No. Test Piles: 1

NOTES:

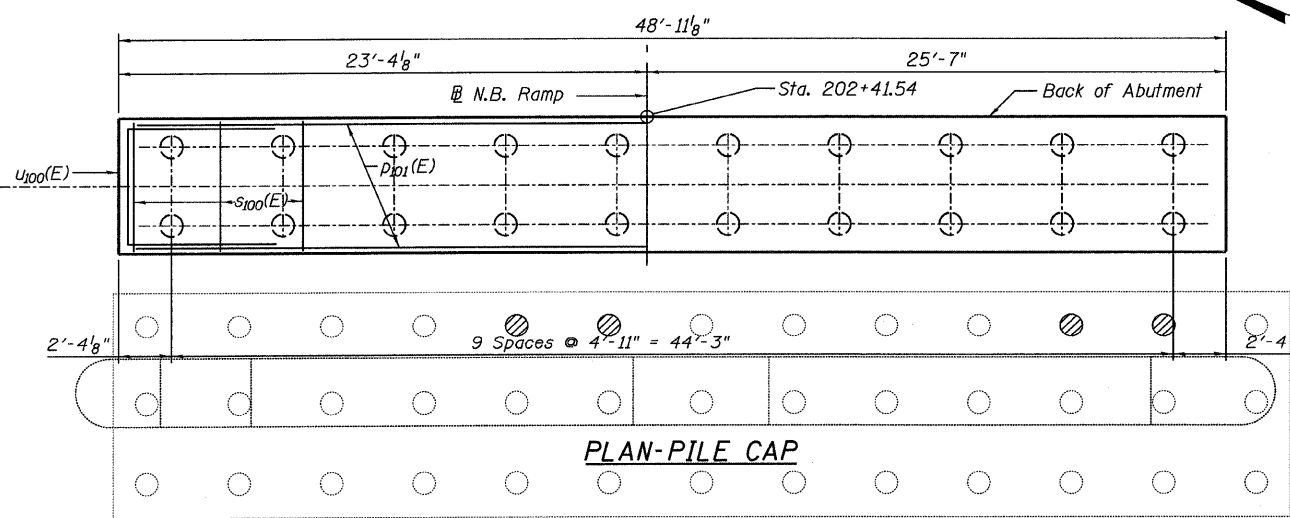
- Space reinforcement in cap to miss anchor bolts.
- Pour steps monolithically with cap.
- Hatched area to be poured after superstructure forms have been removed. Quantity of concrete included with Concrete Superstructure.
- Bars indicated thus 20 x 3- #7 etc. indicates 20 lines of bars with three lengths per line.
- Piles shall be driven prior to placement of the reinforced select fill and coated with coal tar epoxy from the bottom of the select fill to 1" above the base of the abutment. The cost of the coal tar epoxy coating shall be included with the cost of the Furnishing Piles.
- Align bar splicer to be parallel to approach slab reinforcement.



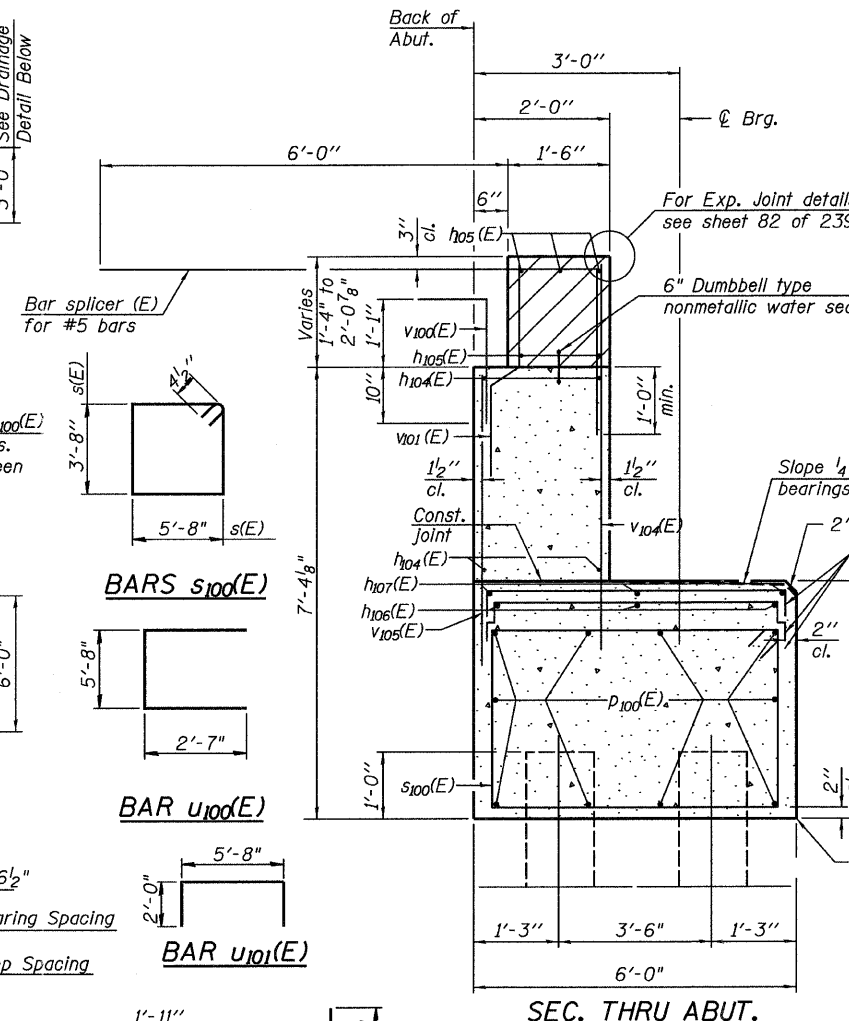
ELEVATION  
(Looking East)



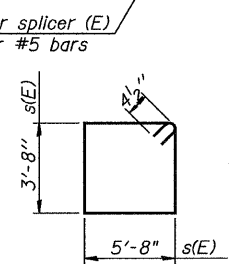
TOP VIEW



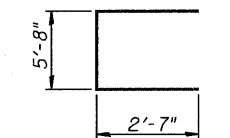
PLAN-PILE CAP



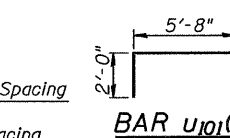
SEC. THRU ABUT.



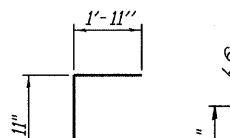
BARS  $s_{100}(E)$



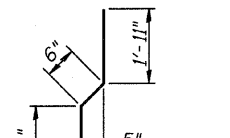
BAR  $u_{100}(E)$



BAR  $u_{101}(E)$



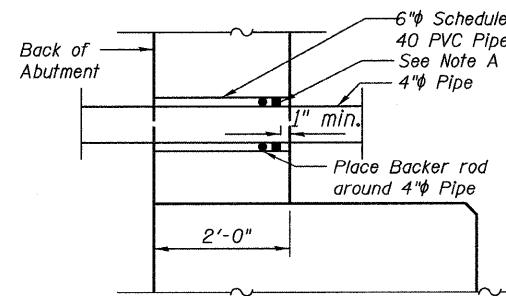
BAR  $v_{100}(E)$



BAR  $v_{101}(E)$

LEGEND

⊙ Piles to be extracted



DRAINAGE DETAIL

Note A:  
Non-staining gray one component non-sag elastomeric gun grade polyurethane sealant meeting the requirements of ASTM C-920, Type S, Grade NS, Class 25 rod.

Shown for 6" pipe.  
Use 10" Schedule 40 PVC pipe for 8" drainage pipe.

Note: Backer Rod, 6" PVC Pipe & sealant shall be included in the cost of Concrete Structures.

RAMP 3 ABUTMENT  
STRUCTURE NO. 016-0724

TYLIN INTERNATIONAL	DESIGNED - JMA	REVISIONS	
	CHECKED - AMD,	NAME	DATE
	DRAWN - JMA		
	CHECKED - AMD,		
	DATE - 03/25/2011		

SHEET NO. 217 239 SHEETS	F.A.I. RTE.	SECTION	COUNTY	TOTAL SHEETS	SHEET NO.
	55	0711.2R & 1011.1BR	COOK	741	541
	CONTRACT NO. 60999				
FED. ROAD DIST. NO. 1 ILLINOIS FED. AID PROJECT					

4:25:32 PM  
e:\01345\structure\2\_central\_ave\_016-0724\_155-3eburden