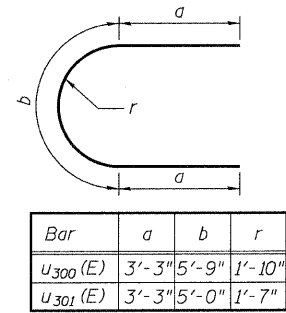
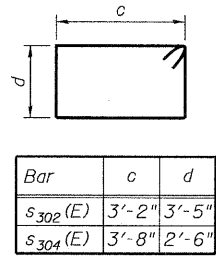


STATE OF ILLINOIS
DEPARTMENT OF TRANSPORTATION



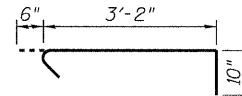
Bar	a	b	r
u ₃₀₀ (E)	3'-3"	5'-9"	1'-10"
u ₃₀₁ (E)	3'-3"	5'-0"	1'-7"

BARS u₃₀₀(E) & u₃₀₁(E)

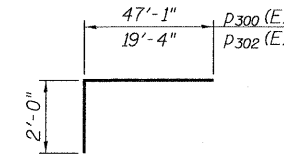


Bar	c	d
s ₃₀₂ (E)	3'-2"	3'-5"
s ₃₀₄ (E)	3'-8"	2'-6"

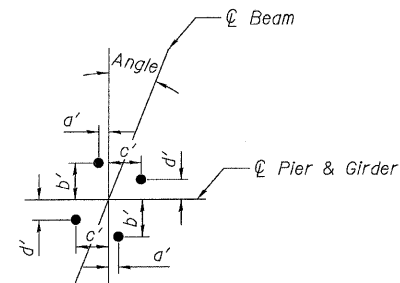
BARS s₃₀₂(E) & s₃₀₄(E)



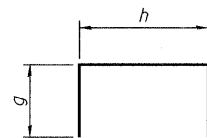
BAR s₃₀₃(E)



BARS p₃₀₀(E) & p₃₀₂(E)

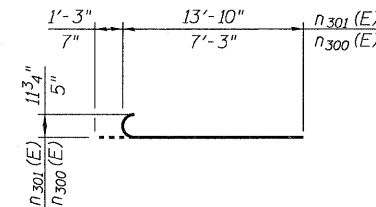


ANCHOR BOLT LAYOUT



Bar	g	h
s ₃₀₀ (E)	7'-3"	3'-8"
s ₃₀₁ (E)	6'-11"	3'-8"
u ₃₀₂ (E)	2'-0"	3'-4"
v ₃₀₁ (E)	10"	5'-5"

BARS s₃₀₀(E), s₃₀₁(E),
u₃₀₂(E) & v₃₀₁(E)



BARS n₃₀₀(E) & n₃₀₁(E)

Floating Bearing at Cross-head Beam					
Location	Angle	a'	b'	c'	d'
BRG. 1	00°00'00"	11 1/2"	1'-5 1/2"	11 1/2"	1'-5 1/2"
BRG. 2	00°00'00"	8 1/4"	1'-4 1/4"	8 1/4"	1'-4 1/4"

BILL OF MATERIAL

Bar	No.	Size	Length	Shape
h ₃₀₁ (E)	36	#5	27'-0"	—
h ₃₀₂ (E)	16	#5	28'-0"	—
h ₃₀₃ (E)	5	#5	26'-2"	—
n ₃₀₀ (E)	10	#5	7'-10"	⌋
n ₃₀₁ (E)	94	#9	15'-1"	⌋
p ₃₀₀ (E)	16	#10	49'-1"	⌋
p ₃₀₁ (E)	32	#10	33'-0"	—
p ₃₀₂ (E)	16	#10	21'-4"	⌋
s ₃₀₀ (E)	59	#5	18'-2"	⌋
s ₃₀₁ (E)	59	#5	17'-6"	⌋
s ₃₀₂ (E)	48	#5	14'-1"	⌋
s ₃₀₃ (E)	36	#5	4'-6"	⌋
s ₃₀₄ (E)	148	#5	13'-3"	⌋
t ₃₀₀ (E)	137	#8	13'-2"	—
u ₃₀₀ (E)	28	#5	12'-3"	⌋
u ₃₀₁ (E)	24	#5	11'-6"	⌋
u ₃₀₁ (E)	25	#5	7'-4"	⌋
v ₃₀₀ (E)	94	#9	13'-6"	—
v ₃₀₁ (E)	5	#5	7'-1"	⌋
w ₃₀₀ (E)	32	#8	30'-10"	—
w ₃₀₁ (E)	32	#8	31'-4"	—
Test Pile Metal Shells	Each		1	
Structure Excavation	Cu Yd		257	
Concrete Structures	Cu Yd		225.0	
Reinforcement Bars, Epoxy Coated	Pound		36,360	
Furnishing Metal Shell Piles 12" x 0.25"	Foot		2,310	
Driving Piles	Foot		2,310	

**RAMP 3 PIER DETAILS
STRUCTURE NO. 016-0724**

TYLIN INTERNATIONAL	DESIGNED - EKH	REVISIONS		SHEET NO. 219	F.A.I RTE.	SECTION 0711.2R & 1011.1BR	COUNTY COOK	TOTAL SHEETS	SHEET NO.
	CHECKED - AMD,	NAME	DATE		55			741	543
	DRAWN - EKH				CONTRACT NO. 60999				
	CHECKED - AMD, DATE - 03/25/2011				FED. ROAD DIST. NO. 1 ILLINOIS FED. AID PROJECT				