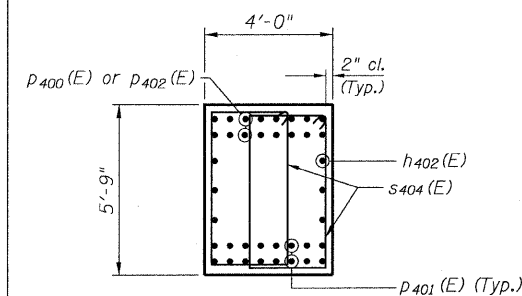
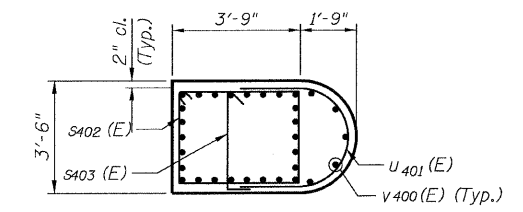


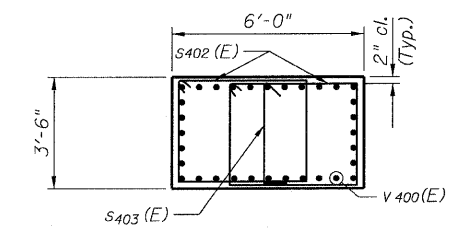
STATE OF ILLINOIS
DEPARTMENT OF TRANSPORTATION



SECTION A-A



SECTION B-B

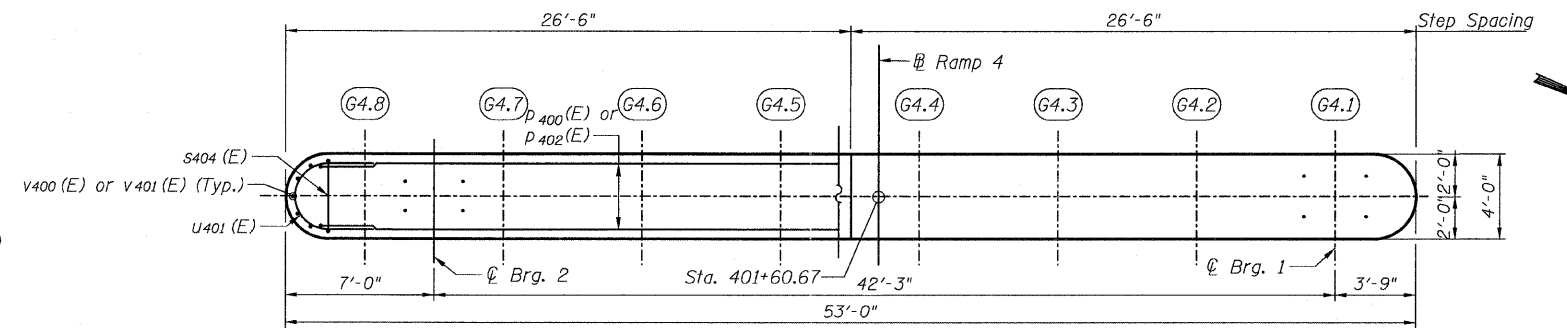


SECTION C-C

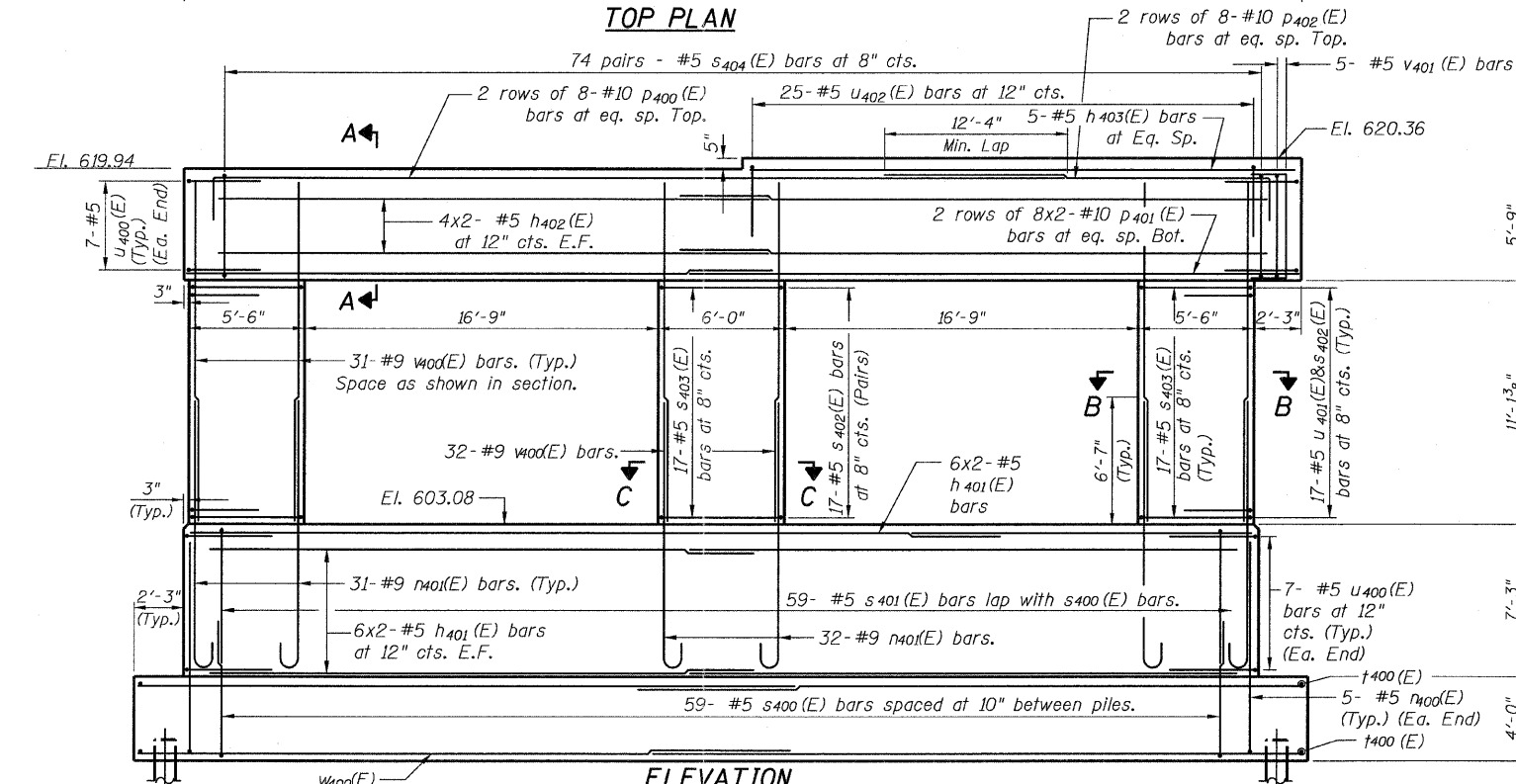
MINIMUM BAR LAPS

(Unless Noted Otherwise)

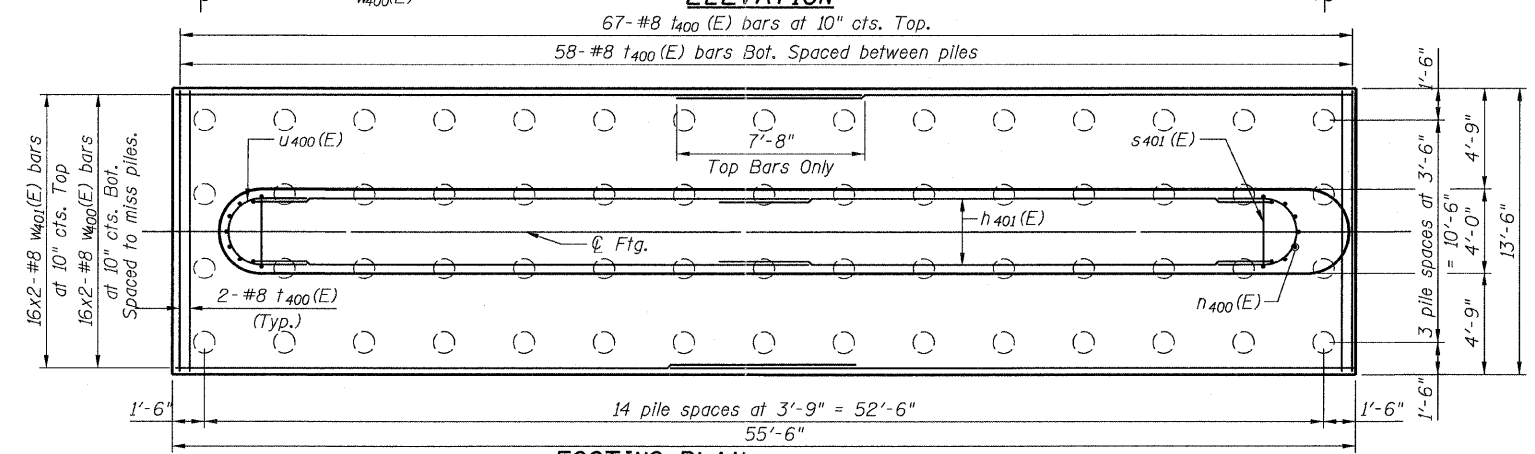
Bar Size	Min. Lap
#5	3'-3"
#7	5'-2"
#8	6'-9"
#10	10'-10"



TOP PLAN



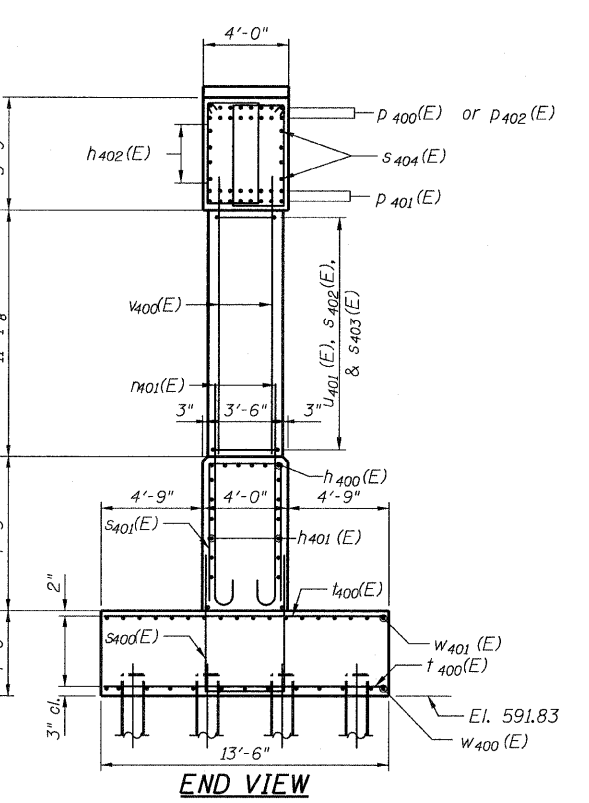
ELEVATION



FOOTING PLAN

NOTES

1. Bars indicated thus 5x2-#11 indicates 5 lines of bars with two lengths per line.
2. Space reinforcement in cap to miss anchor bolts.
3. Space reinforcement in footing to miss piles.
4. Pour steps monolithically with cap.
5. For Bill of Materials, see sheet 222.
6. E.F. - denotes Each Face.



END VIEW

PILE DATA

Type:	12" ϕ x 0.25" wall
Nominal Required Bearing:	270 kips
Allowable Resistance Available:	90 kips
Estimated Length:	38'
No. Production Piles:	59
No. Test Piles:	1

RAMP 4 PIER
STRUCTURE NO. 016-0724

TYLIN INTERNATIONAL	DESIGNED - EKH	REVISIONS		SHEET NO. 221	F.A.I. RTE.	SECTION	COUNTY	TOTAL SHEETS	SHEET NO.	
	CHECKED - AMD,	NAME	DATE		55	0711.2R & 1011.1BR	COOK	741	545	
	DRAWN - EKH				239 SHEETS	CONTRACT NO. 60999				
	CHECKED - AMD,					FED. ROAD DIST. NO. 1 ILLINOIS FED. AID PROJECT				
	DATE - 03/25/2011									

pi:\01345\structure\016-0724\155-4piern2.dgn 4/28/2011 1:17:31 PM