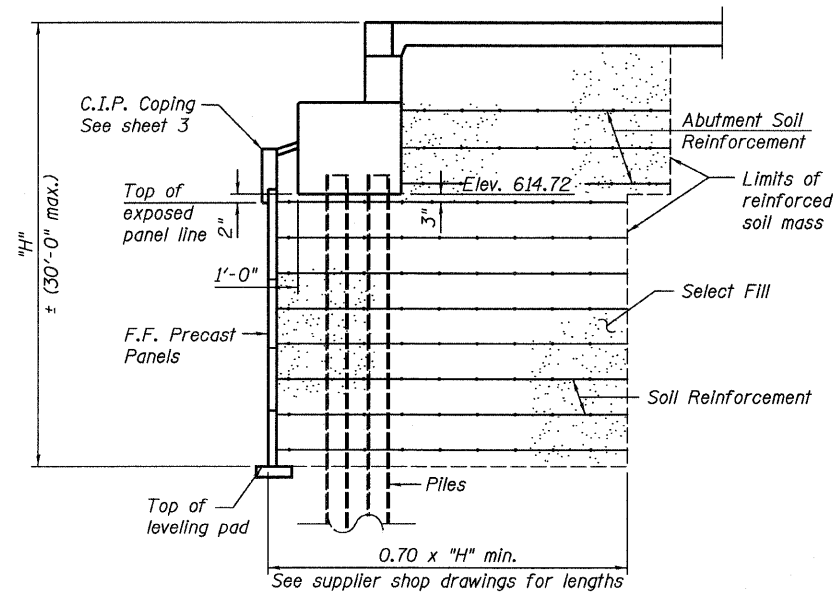


STATE OF ILLINOIS
DEPARTMENT OF TRANSPORTATION

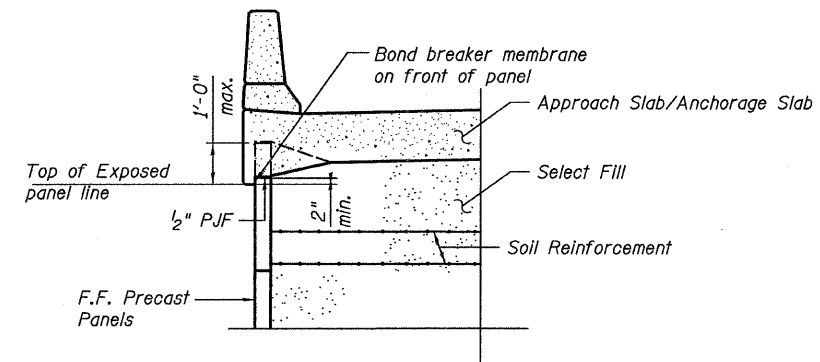


SECTION THRU ABUTMENT

NOTES

The MSE wall supplier shall design the abutment soil reinforcement to resist a horizontal force of 1.83 kips/ft of abutment.

Piles shall be driven prior to placement of the reinforced select fill and coated with coal tar epoxy from the bottom of the select fill to 1" above the base of abutment. The cost of the coal tar epoxy shall be included with the cost of furnishing piles. Cost of furnishing and driving piles is included with S.N. 016-0724.



SECTION THRU RETAINING WALLS

NOTES

Offsets are to Front Face of precast panels.

For coping details see sheet 3.

For anchorage slab details, see sheets 6 & 7.

**RAMP 2 MSE ABUTMENT WALL SECTIONS
STRUCTURE NO. 016-1305**

| | | | | | | | | | | |
|----------------------------|--------------------|-----------|------|-------------|---|--------------------|--------|--------------|-----------|--|
| TYLIN INTERNATIONAL | DESIGNED - JMA | REVISIONS | | SHEET NO. 2 | F.A.I. RTE. | SECTION | COUNTY | TOTAL SHEETS | SHEET NO. | |
| | CHECKED - AMD, MMB | NAME | DATE | | 55 | 0711.2R & 1011.1BR | COOK | 741 | 575 | |
| | DRAWN - JMA | | | | CONTRACT NO. 60999 | | | | | |
| | CHECKED - AMD, MMB | | | | FED. ROAD DIST. NO. 1 ILLINOIS FED. AID PROJECT | | | | | |
| | DATE - 03/25/2011 | | | | | | | | | |

4/28/2011 1:29:33 PM p:\01345\structure\C2_Central Ave. 016-0724\155-2mse.dgn