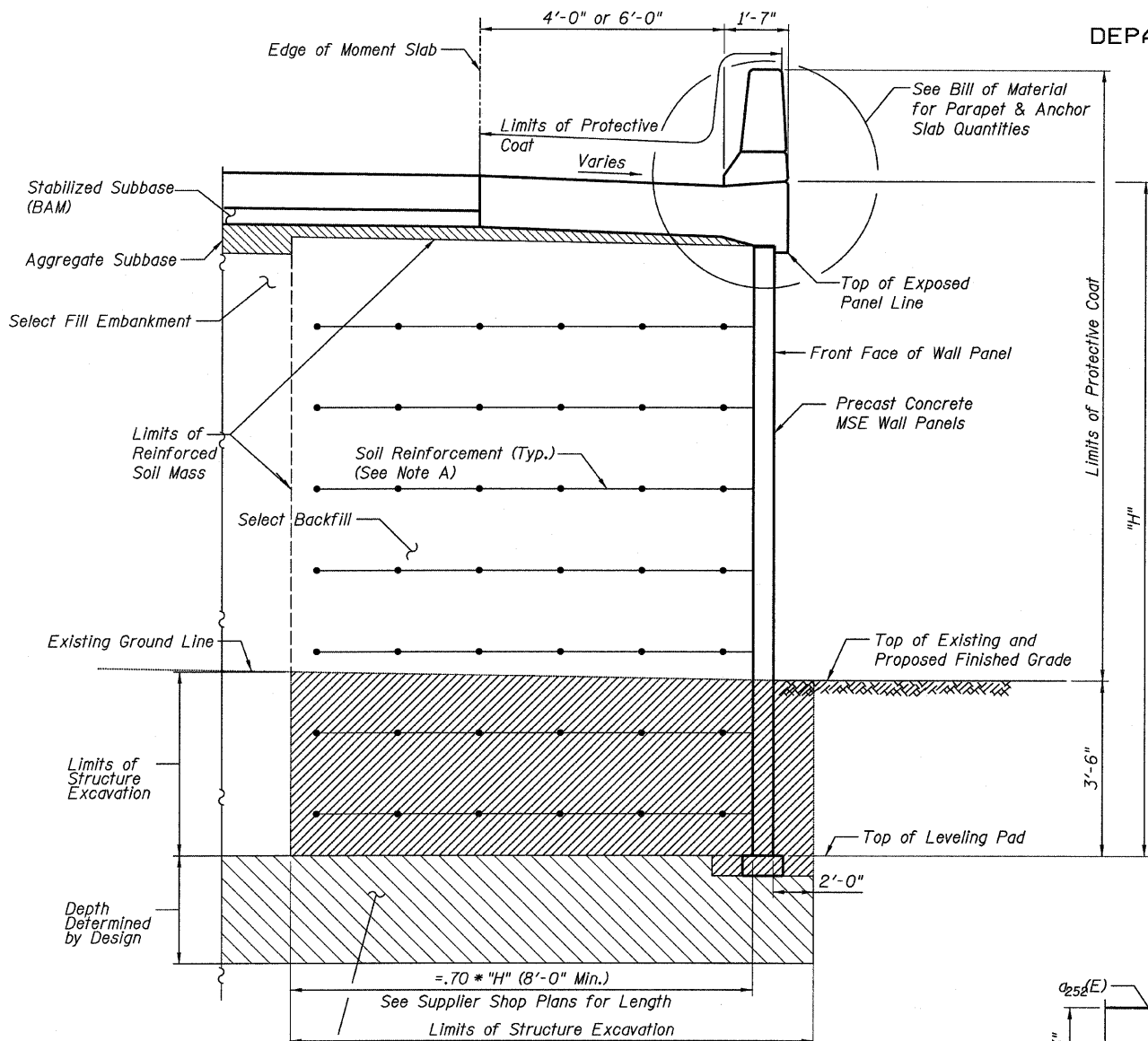
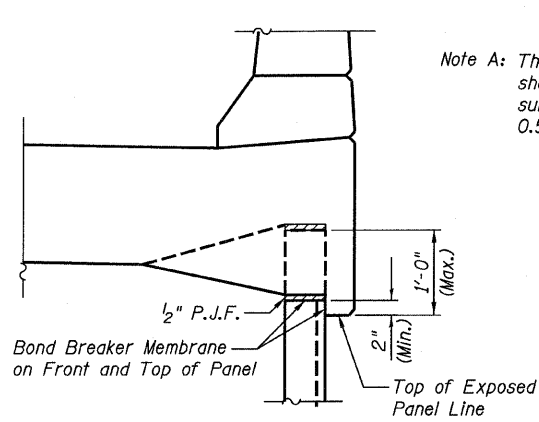


STATE OF ILLINOIS
DEPARTMENT OF TRANSPORTATION

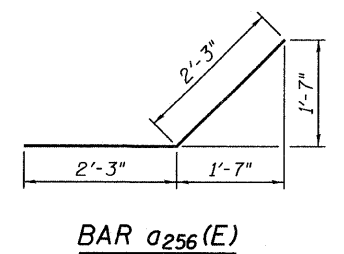


TYPICAL CROSS SECTION

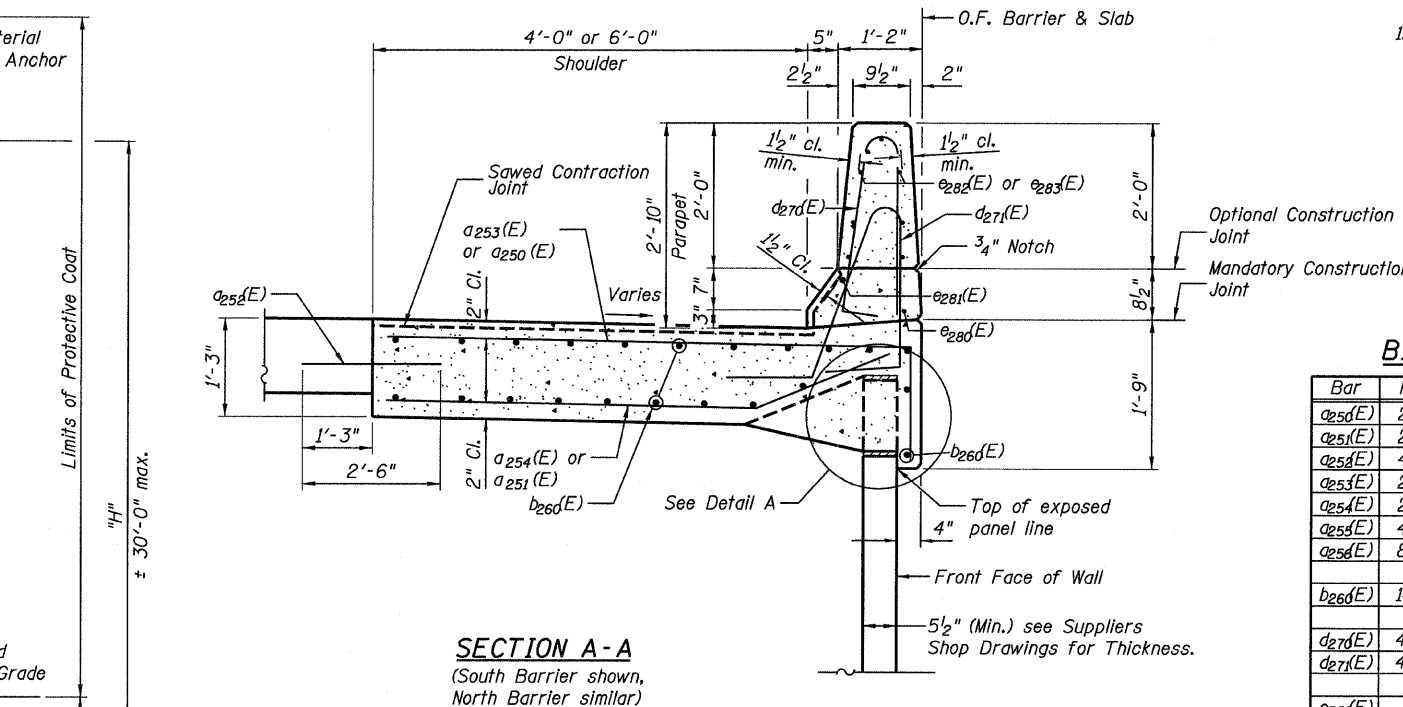


DETAIL A

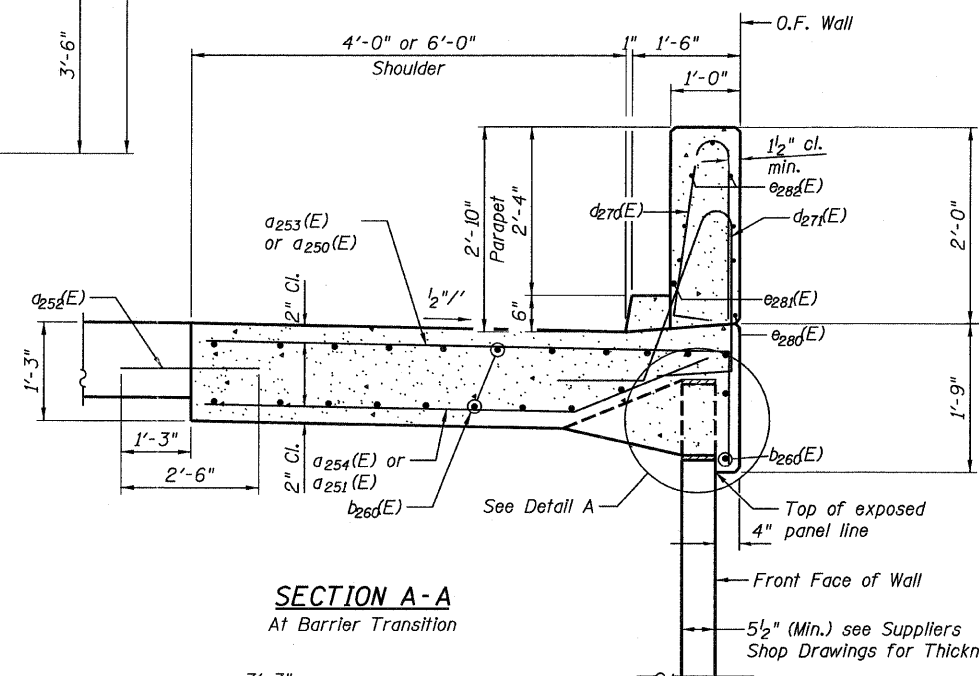
Note A: The M.S.E. Wall Suppliers internal stability design shall account for the anchorage slab's bearing pressure surcharge of 1.0 ksf and a horizontal sliding force of 0.5 k/ft of wall.



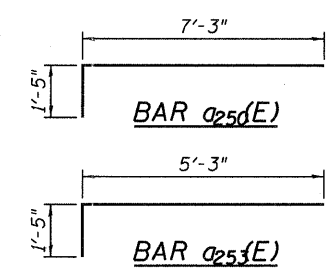
BAR a256(E)



SECTION A-A
(South Barrier shown, North Barrier similar)



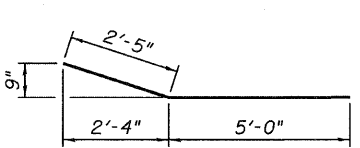
SECTION A-A
At Barrier Transition



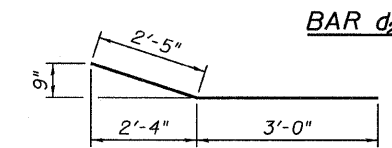
BAR a25d(E)

BAR a25f(E)

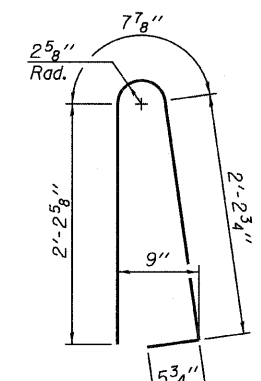
BAR a25j(E)



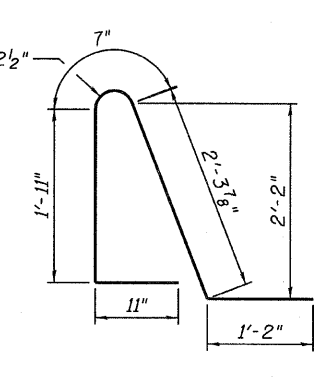
BAR a25k(E)



BAR a25l(E)



BAR d27d(E)



BAR d27f(E)

**RAMP 2 MOMENT SLAB
SECTIONS AND BAR LIST
STRUCTURE NO. 016-1305**

BILL OF MATERIAL

Bar	No.	Size	Length	Shape
a25d(E)	203	#6	8'-8"	┌
a25f(E)	203	#6	7'-5"	┌
a25g(E)	406	#6	2'-6"	┌
a25j(E)	203	#6	6'-8"	┌
a25k(E)	203	#6	5'-5"	┌
a25l(E)	40	#6	5'-6"	┌
a25m(E)	8	#6	4'-6"	┌
b26d(E)	140	#4	31'-2"	┌
d27d(E)	444	#5	5'-7"	└
d27f(E)	444	#5	6'-11"	└
e28d(E)	16	#4	27'-3"	┌
e28f(E)	16	#8	30'-4"	┌
e28g(E)	168	#4	14'-8"	┌
e28h(E)	28	#4	11'-2"	┌
Reinforcement Bars, Epoxy Coated		Pound	22,650	
Concrete Superstructure		Cu. Yds.	183.8	

Bars indicated thus 1 x 15-#5 etc. indicates 1 line of bars with 15 lengths per line.

Note:
1. In Typical Cross Section, See Roadway plans for payment of Stabilized Subbase, Aggregate Subbase and Embankment.

TYLIN INTERNATIONAL

DESIGNED	REVISIONS
- EKH	NAME
CHECKED - AMD, MMB	DATE
DRAWN - EKH	
CHECKED - AMD, MMB	
DATE - 03/25/2011	

SHEET NO.	F.A.I. RTE.	SECTION	COUNTY	TOTAL SHEETS	SHEET NO.
6	55	0711.2R & 1011.1BR	COOK	741	579
10 SHEETS	CONTRACT NO. 60999				
FED. ROAD DIST. NO. 1 ILLINOIS FED. AID PROJECT					

4/28/2011 2:13:56 PM p:\01345\structure\02 Central Ave. 016-0724\55-2\moms\lab3.dgn