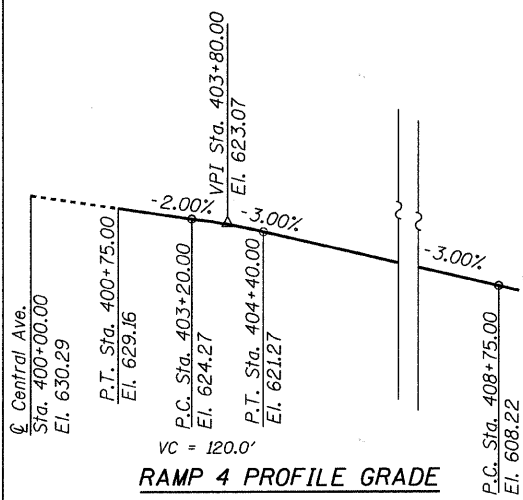


STATE OF ILLINOIS  
DEPARTMENT OF TRANSPORTATION



RAMP 4 PROFILE GRADE

SCOPE OF WORK

Spans 3-5

Remove and replace the existing structure with Mechanically Stabilized Earth Retaining Walls.

Notes:

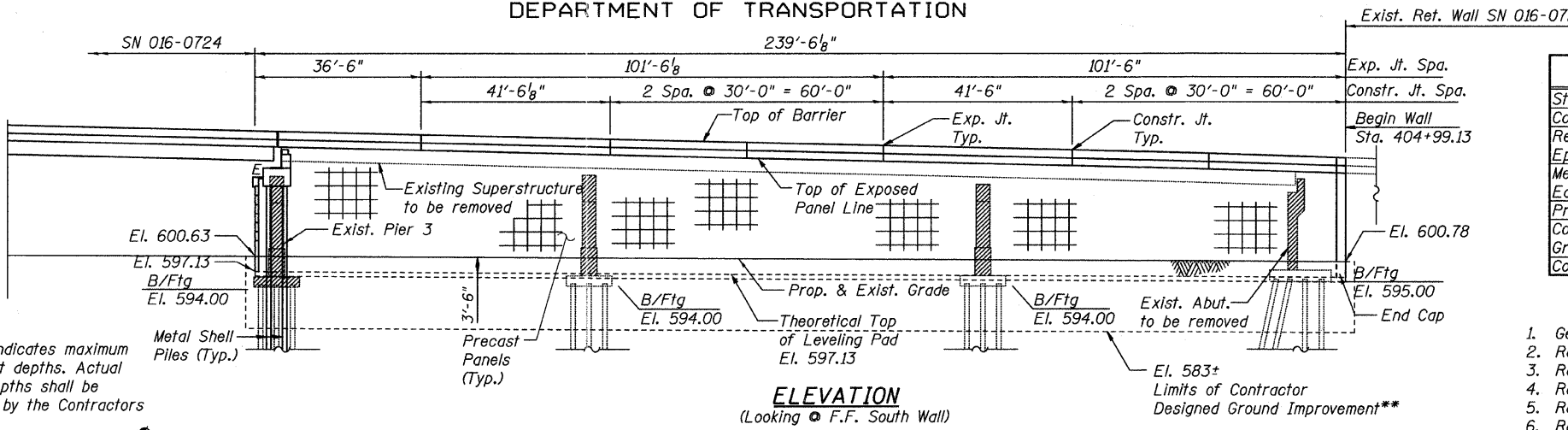
- Wall stations and offsets are given to the front face of the precast concrete wall panels, and are measured from the SB Ramps Baseline.
- For sections through Ramp and Abutment, refer to Sheet 2.
- Slipforming of the parapets is not allowed.
- Contractor Designed Ground Improvement: Bearing Capacity = 4600 psf Maximum Allowable Settlement = 0.4"
- For existing structure removal details see Sheet 335. Cost of removals is included with S.N. 016-0724.
- Reinforcement bars shall conform to the requirements of ASTM A 706 Gr. 60.

APPROVED  
FOR STRUCTURAL ADEQUACY ONLY  
*Anna M. Dukes*  
ENGINEER OF BRIDGES AND STRUCTURES

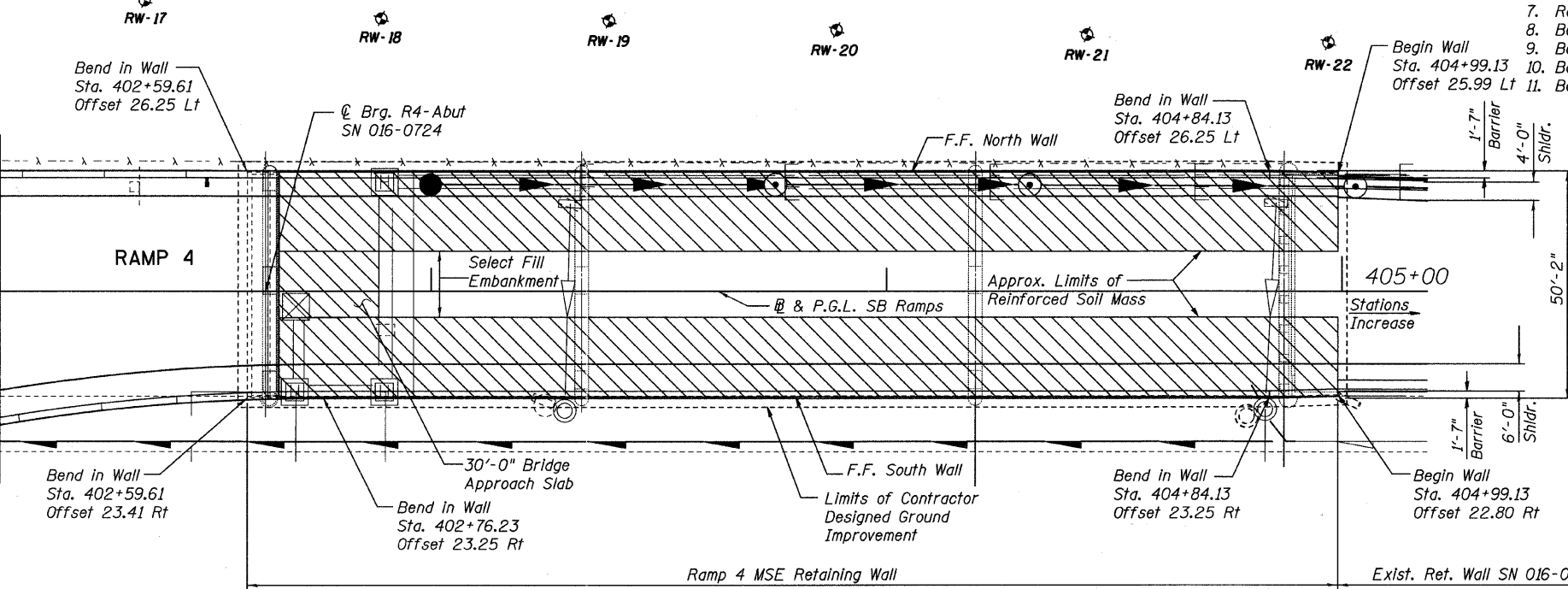


Signed *Anna M. Dukes*  
Anna M. Dukes, S.E. Il. Lic. No. 081-005598  
Expires 11-30-2012.  
Date March 25, 2011

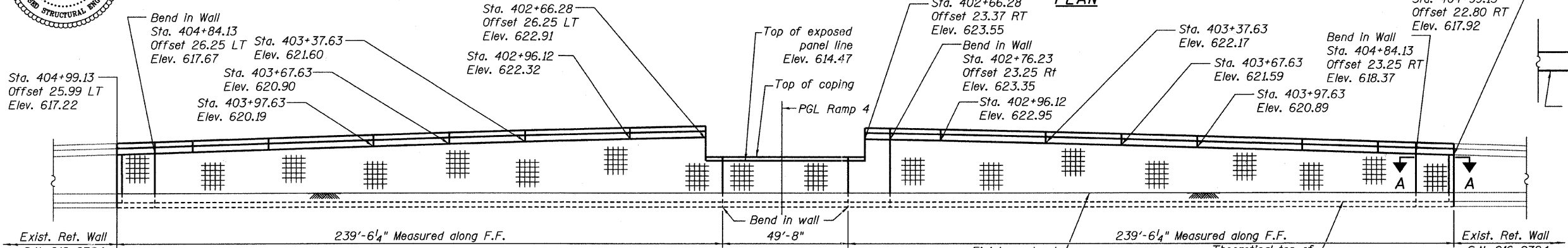
\*\* Elevation indicates maximum improvement depths. Actual remedial depths shall be determined by the Contractors design



ELEVATION  
(Looking @ F.F. South Wall)



PLAN



RAMP 4 WALL ELEVATION  
Developed elevation along front face

TOTAL BILL OF MATERIALS

ITEM	UNIT	TOTAL
Structure Excavation	CU YD	1315
Concrete Superstructure	CU YD	183.8
Reinforcement Bars, Epoxy Coated	POUND	23,510
Mechanically Stabilized Earth Retaining Wall	SQ FT	12,126
Protective Coat	SQ YD	1705
Contractor Designed Ground Improvement	L SUM	0.25
Concrete Structures	CU YD	2.9

INDEX OF SHEETS

- General Plan And Elevation - Ramp 4 Retaining Wall
- Ramp 4 MSE Abutment Wall Sections
- Ramp 4 MSE Abutment Wall & End Cap Details
- Ramp 4 Moment Slab Plan & Elevation 1 of 2
- Ramp 4 Moment Slab Plan & Elevation 2 of 2
- Ramp 4 Moment Slab Sections & Bar List
- Ramp 4 Moment Slab Details
- Boring Logs 1
- Boring Logs 2
- Boring Logs 3
- Boring Logs 4

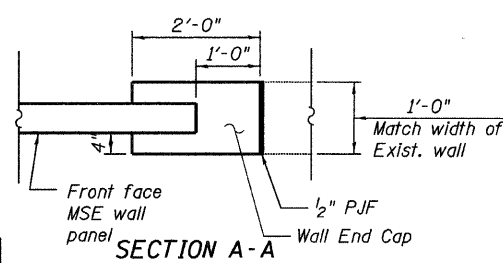
BORING LOCATIONS

No.	Station	*Offset
RW-17	402+37.00	64.0 L
RW-18	402+89.00	60.0 L
RW-19	403+39.00	59.5 L
RW-20	403+89.00	57.5 L
RW-21	404+44.00	56.5 L
RW-22	404+97.00	54.8 L

\* Offset from PGL Ramp 4

LEGEND

- Boring Location
- Existing Manhole
- Proposed Catch Basin
- Proposed Manhole
- Existing Catch Basin
- Existing Underdrain
- Existing Storm Sewer
- Removal of Existing Sub-Structures
- Proposed Underdrain
- Proposed Storm Sewer



SECTION A-A

GENERAL PLAN AND ELEVATION  
RAMP 4 RETAINING WALL  
CENTRAL AVE. OVER I-55  
COOK COUNTY  
STATION 402+59.61 TO 404+99.13  
STRUCTURE NO. 016-1307

TYLIN INTERNATIONAL

DESIGNED	EKH	REVISIONS	
CHECKED	AMD, MMB	NAME	DATE
DRAWN	EKH		
CHECKED	AMD, MMB		
DATE	03/25/2011		

SHEET NO. 1  
11 SHEETS

F.A.I. RTE.	SECTION	COUNTY	TOTAL SHEETS	SHEET NO.
55	0711.2R & 1011.1BR	COOK	741	593
CONTRACT NO. 60999				
FED. ROAD DIST. NO. 1 ILLINOIS FED. AID PROJECT				

5/12/10 PM  
p:\01345\structure\2 Central Ave. 016-0724\155-4.mspage.dgn  
5/10/2011