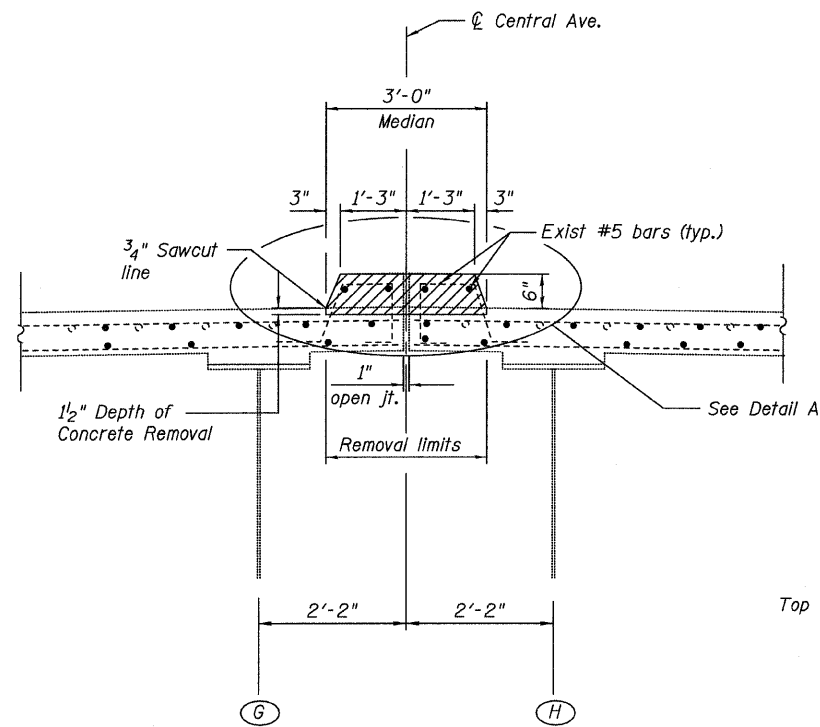
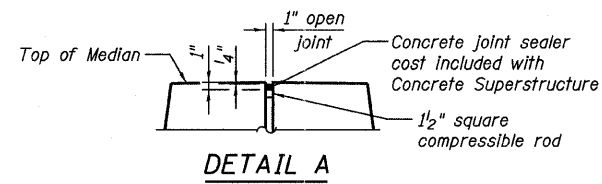


STATE OF ILLINOIS
DEPARTMENT OF TRANSPORTATION

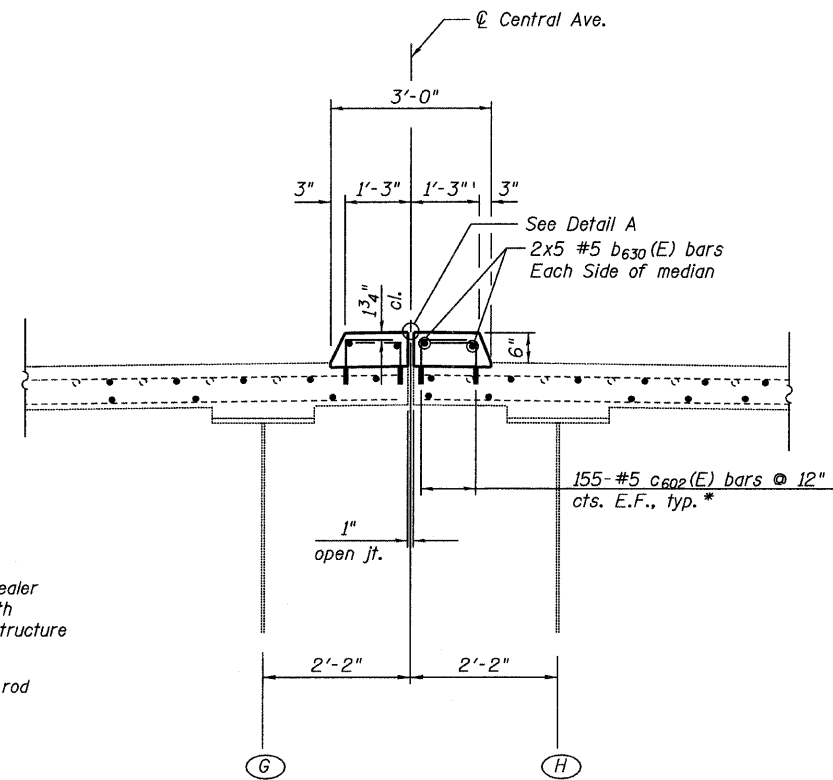


EXISTING SECTION AT MEDIAN LOOKING NORTH

(Applies Sta. 28+11.55 to 29+66.00)
(Existing median to be removed during Pre-Stage work, See Roadway Plans)



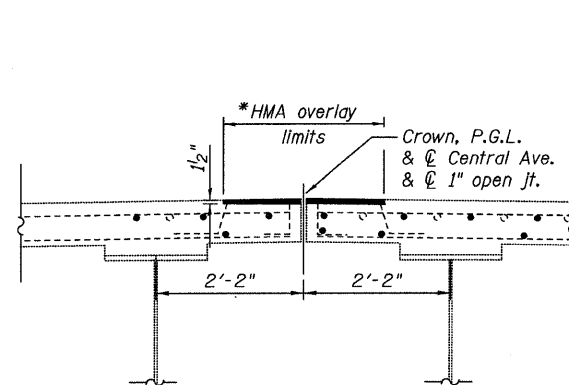
DETAIL A



PROPOSED SECTION AT MEDIAN LOOKING NORTH

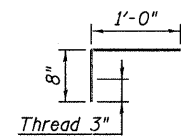
(Applies Sta. 28+11.55 to 29+66.00)
(To be built during Stage III Construction)

* Bottom leg of c602(E) bars shall be cored and set according to article 509.06 of the Standard Specifications. Cored holes shall be roughened or scored per Manufacturer's Recommendations, maximum depth of cored hole shall not exceed 4".



DETAIL A

* HMA overlay included in the pay item "Hot-Mix Asphalt Surface Course, Mix "D", N70" and the HMA removal is included in the pay item "Hot-Mix Asphalt Paved Shoulder Removal"



BAR c602(E)

NOTES:

- 3) After construction stage is complete, remove HMA overlay.
- 4) Install reinforcement and pour center median concrete. Any damage or loose deck concrete at the open joint shall be removed and reconstructed in the median concrete. Included in the pay item "Concrete Superstructure".

BILL OF MATERIAL

Bar	No.	Size	Length	Shape	
b630(E)	20	#5	33'-6"	—	
c602(E)	232	#5	1'-10"	┌	
Concrete Removal				CU YD	10.8
Concrete Superstructure				CU YD	8.4
Reinforcement Bars, Epoxy Coated				POUND	1,780

**MAINTAINING OF TRAFFIC
CROSSOVER DETAILS
STRUCTURE NO. 016-3240**

TYLIN INTERNATIONAL	DESIGNED - DY, LS	REVISIONS		SHEET NO. 5	F.A.I. RTE.	SECTION	COUNTY	TOTAL SHEETS	SHEET NO.	
	CHECKED - AMD, LS	NAME	DATE		55	0711.2R & 1011.1BR	COOK	741	608	
	DRAWN - DY, LS				CONTRACT NO. 60999					
	CHECKED - AMD, LS				FED. ROAD DIST. NO. 1 ILLINOIS FED. AID PROJECT					
	DATE - 03/25/2011									